

CERTIFICATE OF LOCATION OF GOVERNMENT CORNER

County of Anoka

State of Minnesota

North 1/4 Corner of Sec. 25 Township 33 Range 25

On the 6th day of August, 1965, the described corner was evidenced by a Cartwright concrete monument

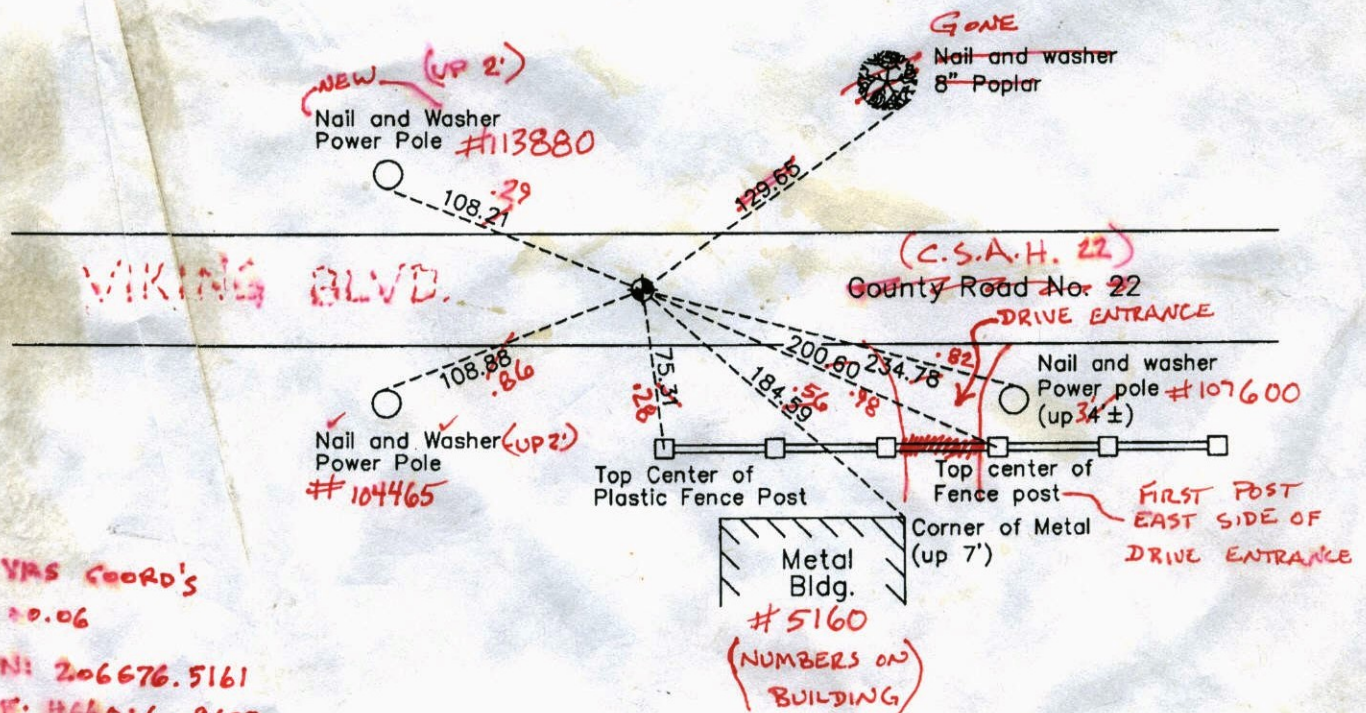
and to perpetuate the location of said corner, at the exact location thereof, a permanent marker was placed consisting of a cast iron monument

AND on the 7th day of September, 2005, said permanent marker was replaced with a new cast iron monument after construction and the ties were updated

Updated reference ties are as shown below.

7/31/13
JS SH

Field



YMS COORD'S
3D 20.06
N: 206676.5161
E: 466016.9622

N
W ANOKA COUNTY SURVEYOR E
S
Revision Date
12/03/10

N.A.D. 1983 Coordinates
(1996 Adjustment)

County Project Coordinates	
Northing	206676.4864
Easting	466016.9682
Date	9/25/02

I hereby certify that this United States public land survey monument record is correct and complete to the best of my knowledge and belief.

Larry D. Hoium Date 12/03/10
 Larry D. Hoium, Anoka County Surveyor
 Minnesota License Number 18165

CERTIFICATE OF LOCATION OF GOVERNMENT CORNER

County of Anoka

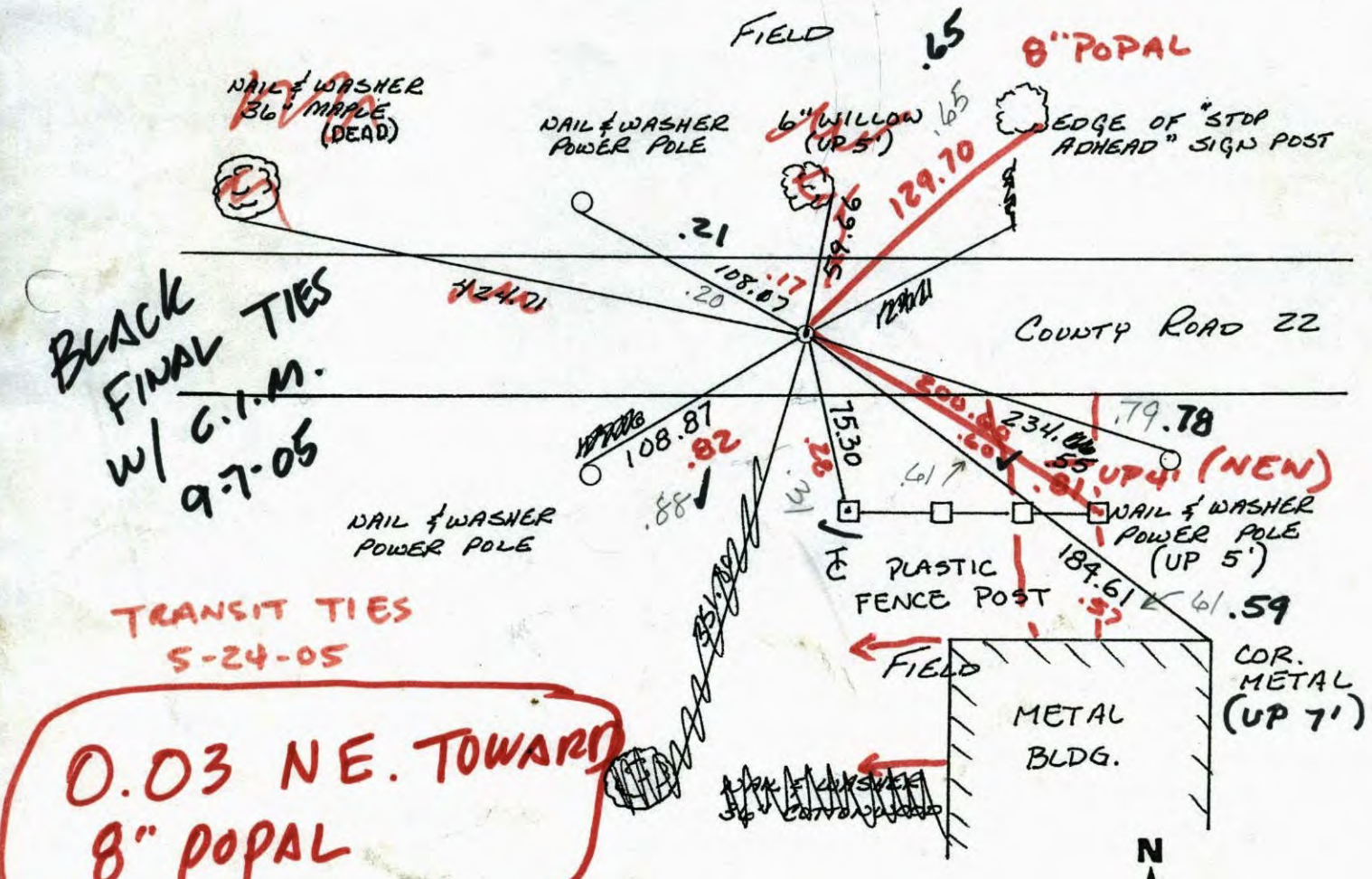
State of Minnesota

NORTH 1/4 Corner of Sec. 25 Township 33 Range 25

I hereby certify that on the 6 day of AUGUST, 1965, I found the described corner which was evidenced by CARTWRIGHT CONCRETE MONUMENT

and I further certify that to perpetuate the location of said corner, I did, at the exact location thereof, place a permanent marker consisting of CAST IRON MONUMENT

which reference or witness monuments are located in the manner following:

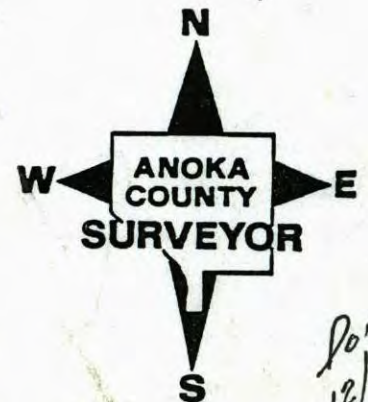


BLACK FINAL TIES
w/ C.I.M.
9-7-05

TRANSIT TIES
5-24-05

0.03 NE. TOWARD
8" POPAL

Revised date	Revised date	Revised date
6-27-85		
8-29-88		
6-7-94		
10-1-02		



Done
12/09/10
LH

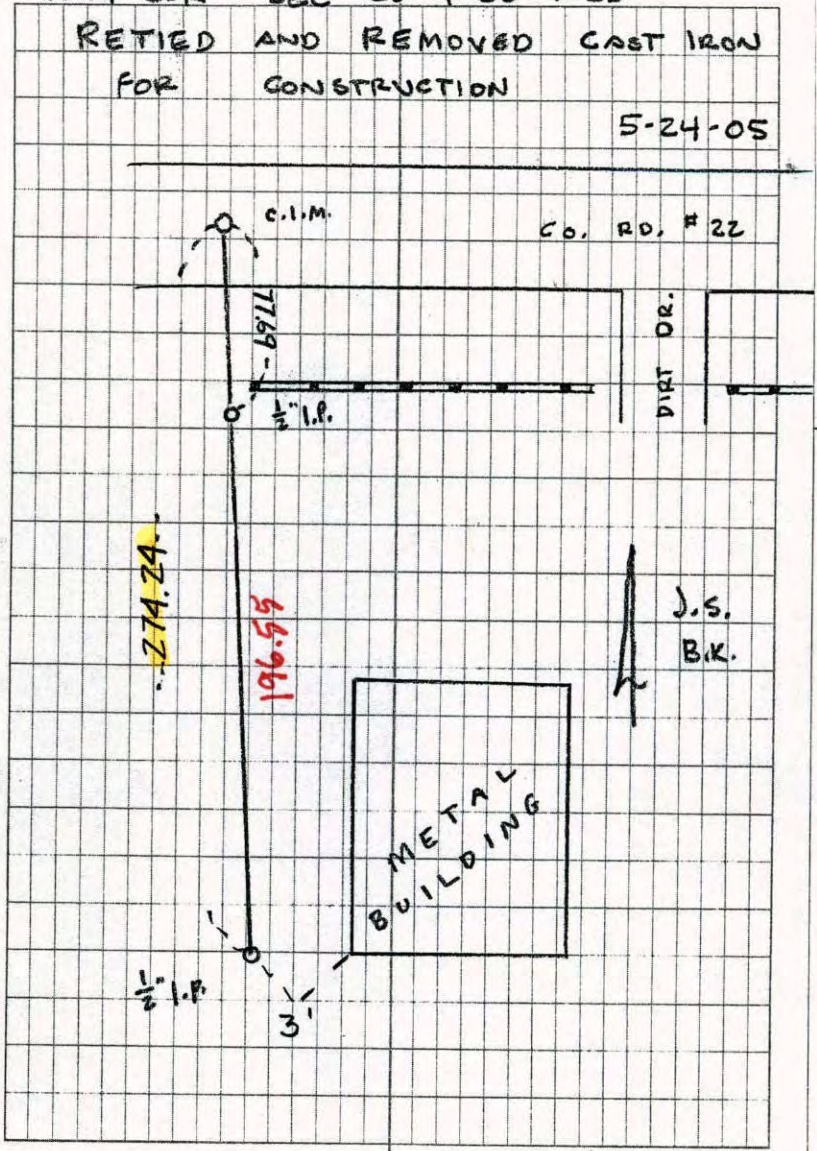
TRANSIT TIE

78

N¹/₄ COR SEC 25 T 33 R 25

RETIED AND REMOVED CAST IRON
FOR CONSTRUCTION

5-24-05



CERTIFICATE OF LOCATION OF GOVERNMENT CORNER

County of Anoka

State of Minnesota

North 1/4 Corner of Sec. 25 Township 33 Range 25

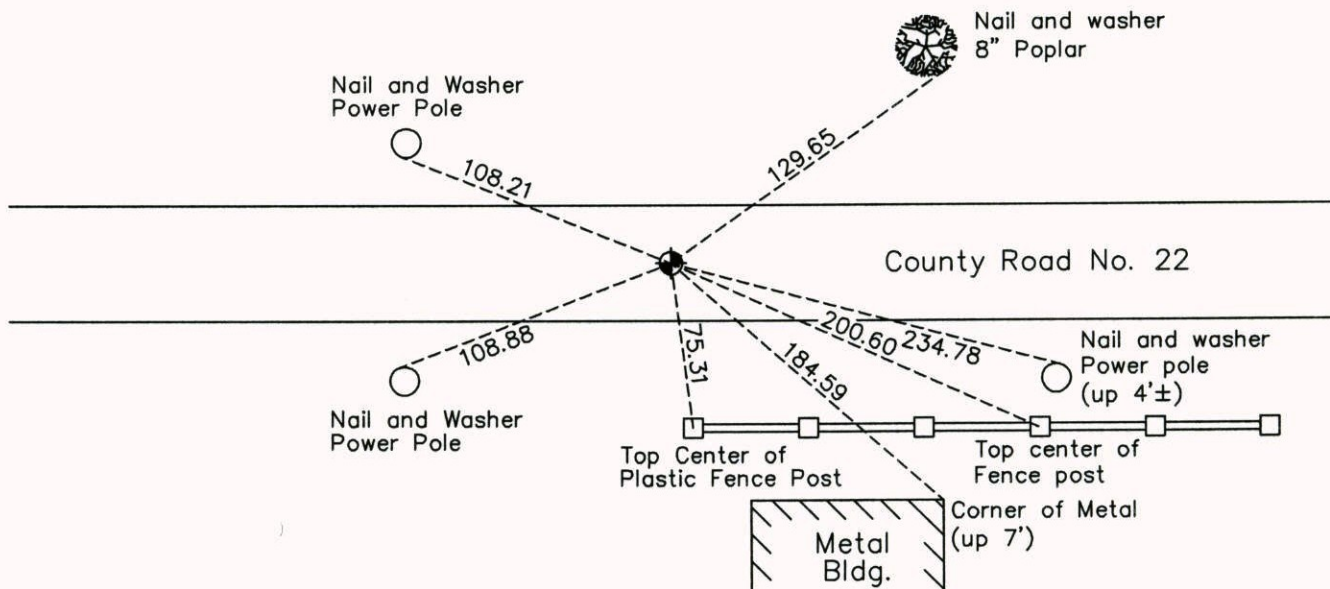
On the 6th day of August, 1965, the described corner was evidenced by a Cartwright concrete monument

and to perpetuate the location of said corner, at the exact location thereof, a permanent marker was placed consisting of a cast iron monument

AND on the 7th day of September, 2005, said permanent marker was replaced with a new cast iron monument after construction and the ties were updated

Updated reference ties are as shown below.

Field



N

W ANOKA COUNTY SURVEYOR E

S

Revision Date

12/03/10

N.A.D. 1983 Coordinates
(1996 Adjustment)

County Project Coordinates	
Northing	206676.4864
Easting	466016.9682
Date	9/25/02

I hereby certify that this United States public land survey monument record is correct and complete to the best of my knowledge and belief.

Larry D. Hoium Date 12/03/10

Larry D. Hoium, Anoka County Surveyor

Minnesota License Number 18165

CERTIFICATE OF LOCATION OF GOVERNMENT CORNER

County of Anoka

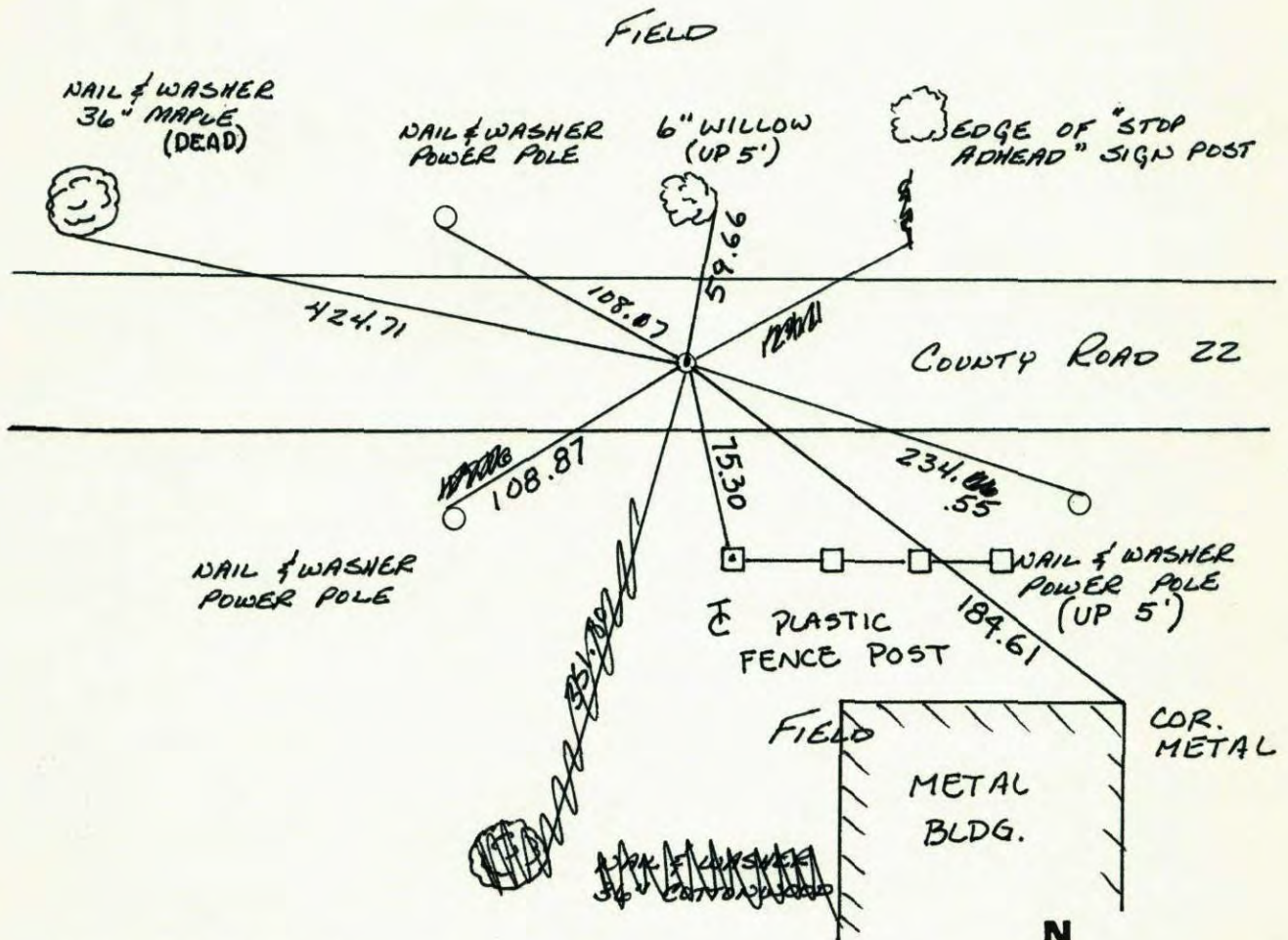
State of Minnesota

NORTH 1/4 Corner of Sec. 25 Township 33 Range 25

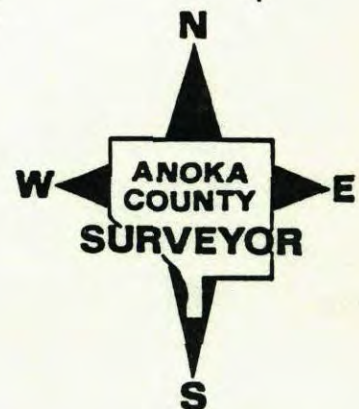
I hereby certify that on the 6 day of AUGUST, 1965, I found the described corner which was evidenced by CARTWRIGHT CONCRETE MONUMENT

and I further certify that to perpetuate the location of said corner, I did, at the exact location thereof, place a permanent marker consisting of CAST IRON MONUMENT

which reference or witness monuments are located in the manner following:

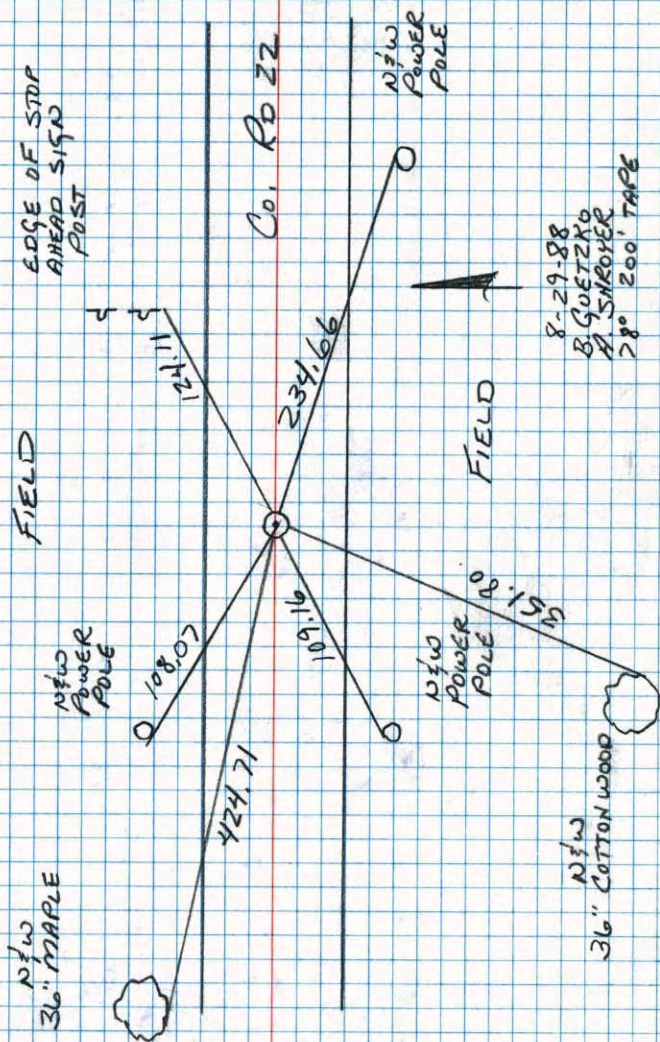


Revised date	Revised date	Revised date
6-27-85		
8-29-88		
6-7-94		
10-1-02		



N¹/₄ CORNER SEC 25 T33 R25

RETIRED CAST IRON MONUMENT

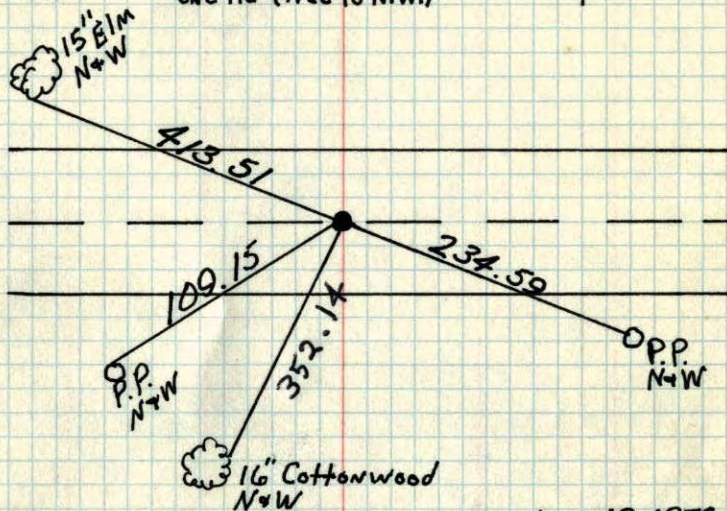


NO. 448

TELETYPE

N¹/₄ Cor. Sec. 25-T33-R25

Cast Iron Monument Replaced Conc. Monument
 Cast Iron Mon. down 2.0" ± Rd. to be Black Topped
 Set Cast Iron Mon. Flush
 Sept. 14, 1973
 B. Olson
 J. Boettcher
 found Cast Iron and only
 one tie (tree to N.W.)



TIE CHECK
 July 26, 1973
 B. Olson
 D. Brien
 D. Farnmer

TIE CHECK
 8-2-82
 P. ROSS
 P. HURNBY

June 19, 1972
 M. D. Anderson
 P. Berthelson

Raised
 9-26-78
 H. Larson
 B. Gutzko
 D. Naglak

TIE CHECK
 7-26-76
 G. ADAMS
 S. BAEN
 J. STEPHENS

TEMPERATURE CORRECTED ROLAND W. ANDERSON
 AND HORIZONTALLY COUNTY SURVEYOR
 TAPED MEASUREMENTS ANOKA COUNTY, MINNESOTA

N/4 Cor. Sec. 25-T33-R25

Cast Iron Monument

Replaced Conc. Mun

C.I. Mon. down 2.0'±

Rd. to be black topped



Found Cast Iron and only
one tie (tree to N.W.)

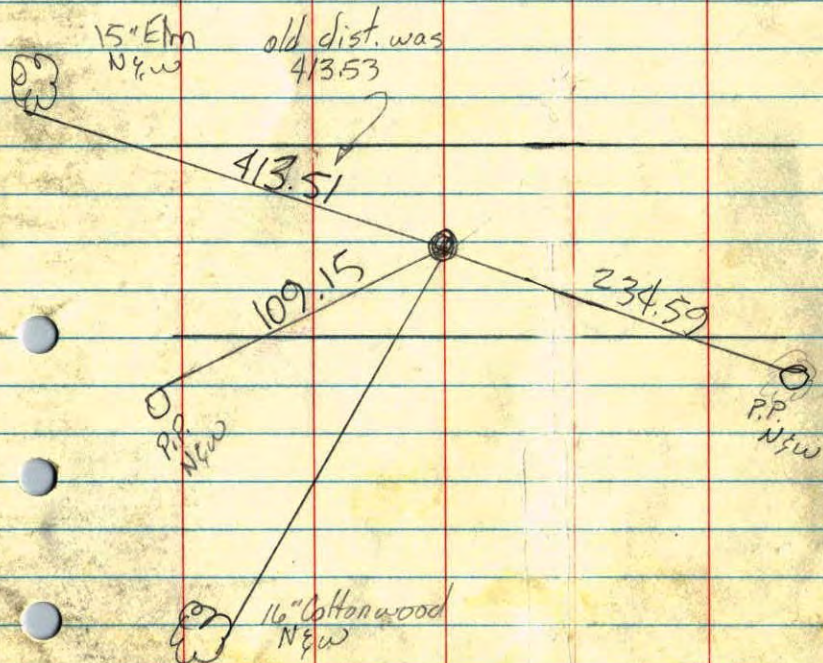
June 19, 1972

M.D. Anderson

P. Bertleson

temp 75°

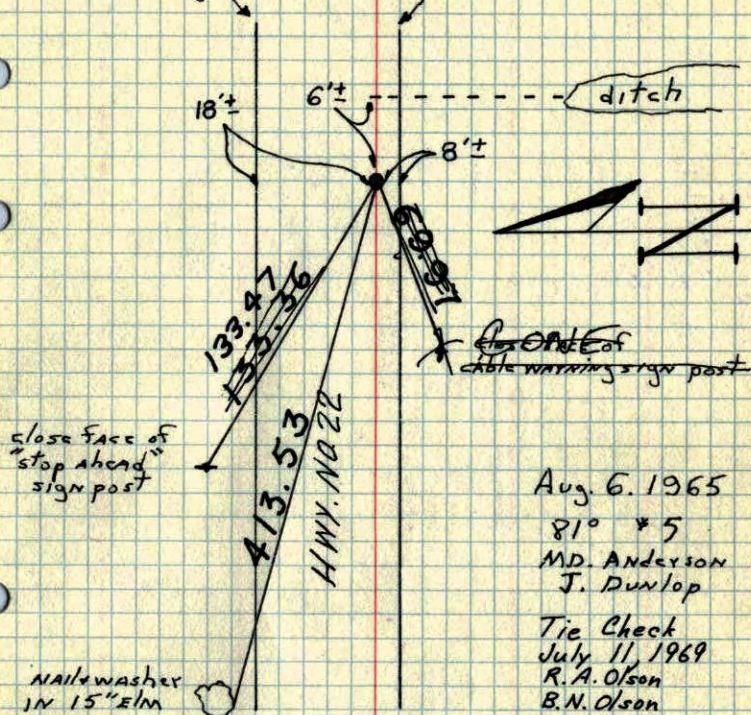
tape



N/4 Cor. Sec. 25 T33 R25

Cast iron monument in place of Conc.
monument. down 0.4'±.

Edge of traveled road



Aug. 6, 1965

81° * 5

M.D. Anderson

J. Dunlop

Tie Check

July 11, 1969

R.A. Olson

B.N. Olson

TEMPERATURE CORRECTED ROLAND W. ANDERSON
AND HORIZONTALLY COUNTY SURVEYOR
TAPED MEASUREMENTS ANOKA COUNTY, MINNESOTA

N¹/₄ Cor. Sec. 25 T33 R25

Cast iron monument in place of Conc. monument. down 0.4".

Edge of traveled road

18"

6"

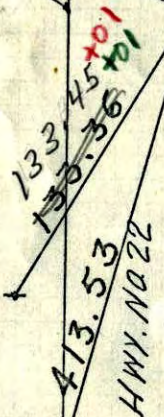
8"

ditch



Gone
close face of
cable warning sign post

close face of
"stop ahead"
sign post



Aug. 6, 1965

81° #5

M.D. Anderson
J. Dunlop

2-11-69

Temp 80° ✓

Tape #5 ✓

R.A. Olson

B.N. Olson

TEMPERATURE CORRECTED
AND HORIZONTALLY
TAPED MEASUREMENTS

ROLAND W. ANDERSON
COUNTY SURVEYOR
ANOKA COUNTY, MINNESOTA

Nailwasher
in 15" Elm

N¹/₄ Cor. Sec. 25-T33-R25

Cast Iron Mon. in place of Conc. Mon.

Cast Iron down 0.4"

Edge of traveled road

8"

6"

8"

ditch

+0.1

+0.1

133.34

133.34

133.34

133.34

133.34

133.34

133.34

133.34

133.34

133.34

133.34

133.34

133.34

133.34

133.34

133.34

133.34

133.34

133.34

133.34

133.34

133.34

133.34

133.34

133.34

133.34

133.34

+0.1

+0.1

69.916

69.916

69.916

69.916

69.916

69.916

69.916

69.916

69.916

69.916

69.916

69.916

69.916

69.916

69.916

69.916

69.916

69.916

69.916

69.916

69.916

69.916

69.916

69.916

69.916

69.916

69.916

close face
cable warning
sign post

close face
STOP AHEAD
sign post

Aug. 6, 1965

M.D. Anderson
J. Dunlop

Temp 81°

Tape #5

15" Elm
Nail & washer

