

CERTIFICATE OF LOCATION OF GOVERNMENT CORNER

County of Anoka

State of Minnesota

Southeast Corner of Sec. 23 Township 33 Range 25

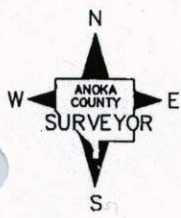
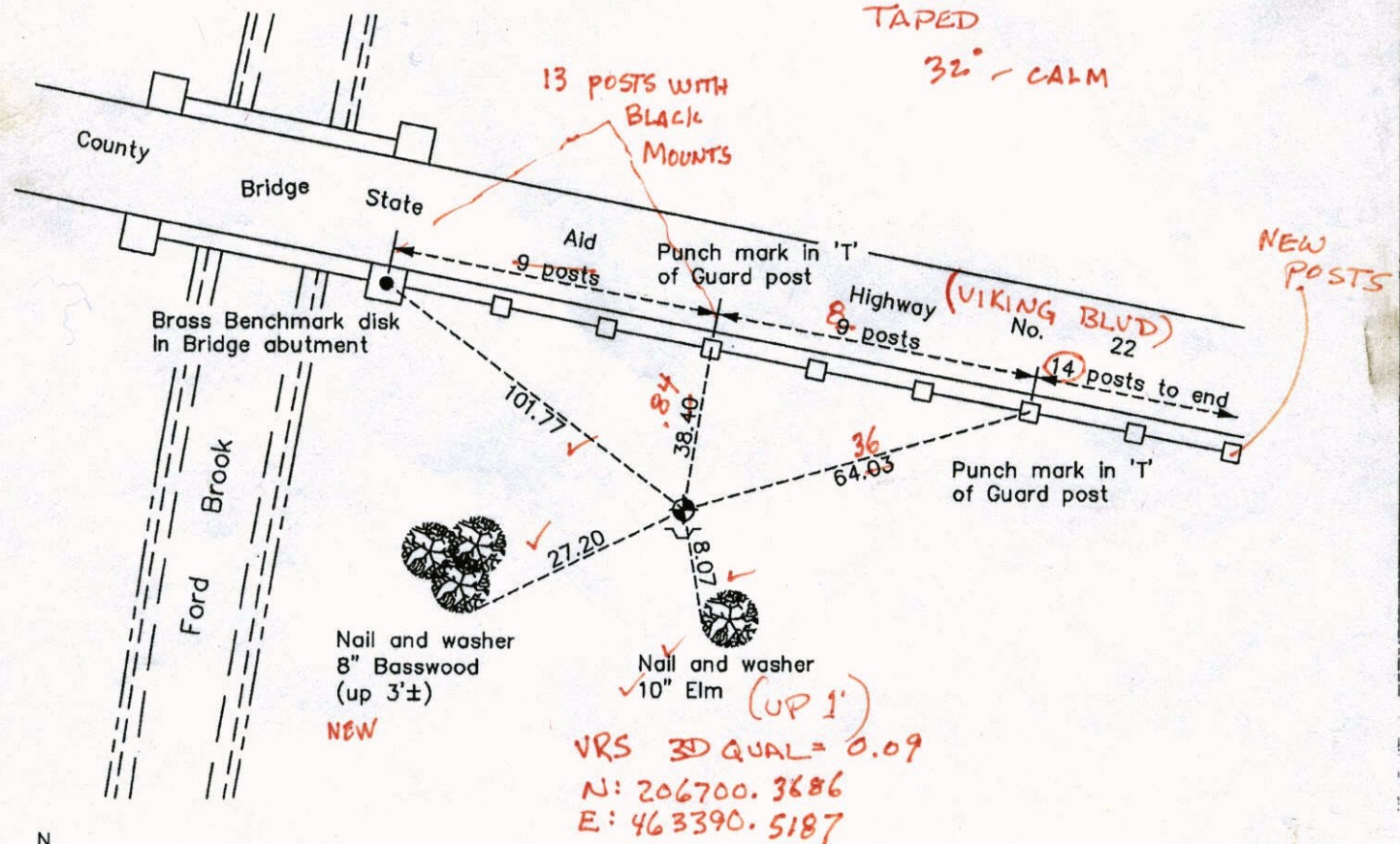
On the 2nd day of October, 1963, the described corner was evidenced by a 6"X6" granite monument

and to perpetuate the location of said corner, at the exact location thereof, a permanent marker was placed consisting of a cast iron monument

AND on the 27th day of May, 2011, said permanent marker was found and the ties were updated. A sign and post was set on the south side. (DOWN 0.9±)

Updated reference ties are as shown below.

3/28/13
JS SH
TAPED
32° - CALM



Revision Date
8/16/11

N.A.D. 1983 Coordinates
(1996 Adjustment)

County Project Coordinates	
Northing	206700.3146
Easting	463390.6178
Date	9/26/02

I hereby certify that this United States public land survey monument record is correct and complete to the best of my knowledge and belief.

Larry D. Hoium Date 8/16/11

Larry D. Hoium, Anoka County Surveyor
Minnesota License Number 18165

CERTIFICATE OF LOCATION OF GOVERNMENT CORNER

County of Anoka

State of Minnesota

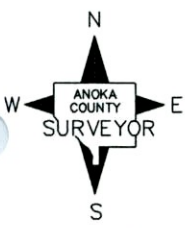
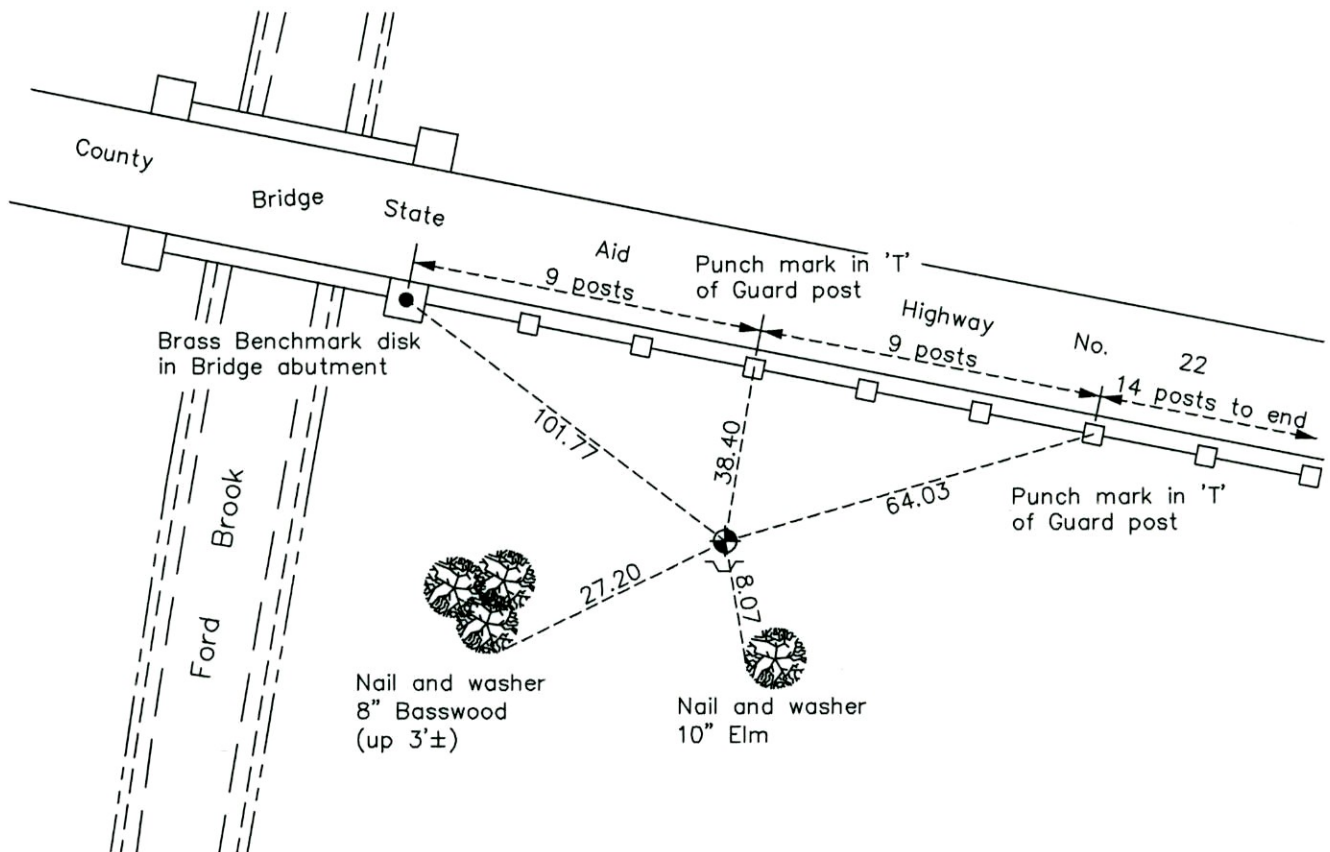
Southeast Corner of Sec. 23 Township 33 Range 25

On the 2nd day of October, 1963, the described corner was evidenced by a 6"X6" granite monument

and to perpetuate the location of said corner, at the exact location thereof, a permanent marker was placed consisting of a cast iron monument

AND on the 27th day of May, 2011, said permanent marker was found and the ties were updated. A sign and post was set on the south side.

Updated reference ties are as shown below.



Revision Date
8/16/11

N.A.D. 1983 Coordinates
(1996 Adjustment)

County Project Coordinates	
Northing	<u>206700.3146</u>
Easting	<u>463390.6178</u>
Date	<u>9/26/02</u>

I hereby certify that this United States public land survey monument record is correct and complete to the best of my knowledge and belief.

Larry D. Hoium Date 8/16/11

Larry D. Hoium, Anoka County Surveyor
Minnesota License Number 18165

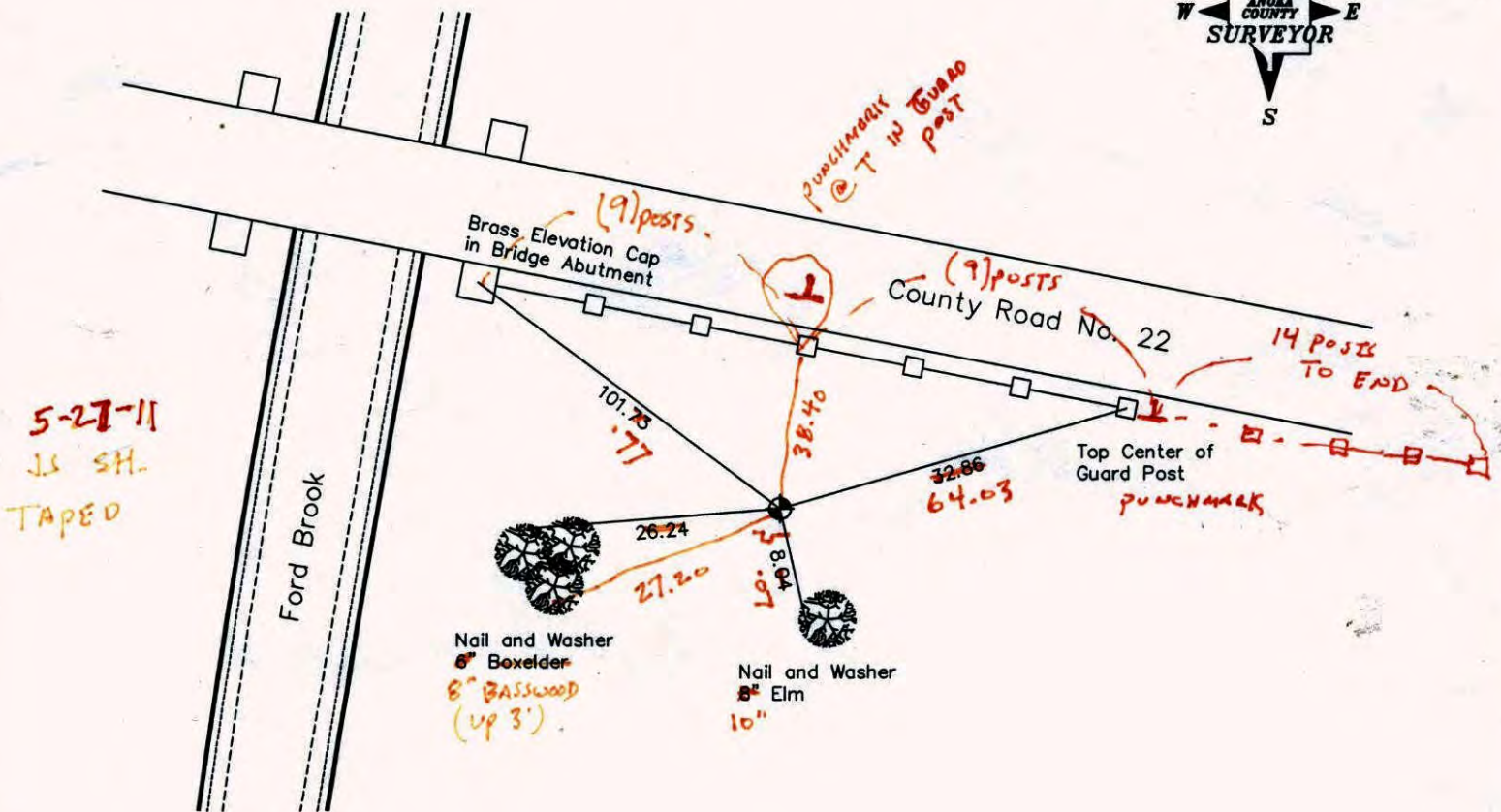
CERTIFICATE OF LOCATION OF GOVERNMENT CORNER
County of Anoka State of Minnesota

Southeast Corner of Sec. 23, Township 33, Range 25

I hereby certify that on the 2nd day of October, 1963, I found the described corner which was evidenced by a 6 inch by 6 inch granite monument

and I further certify that to perpetuate the location of said corner, I did, at the exact location thereof, place a permanent marker consisting of a cast iron monument SIGN + POST S. SIDE

which reference or witness monuments are located in the manner following:



Revised date

7-1-85
4-13-88
10-10-02

N.A.D. 1983 Co-ordinates (1996 Adjustment)

County Project Co-ordinates	State Plane Co-ordinates
Northing <u>206700.3146</u>	Y <u> </u>
Easting <u>463390.6178</u>	X <u> </u>

Date 9-26-02

CERTIFICATE OF LOCATION OF GOVERNMENT CORNER

County of Anoka

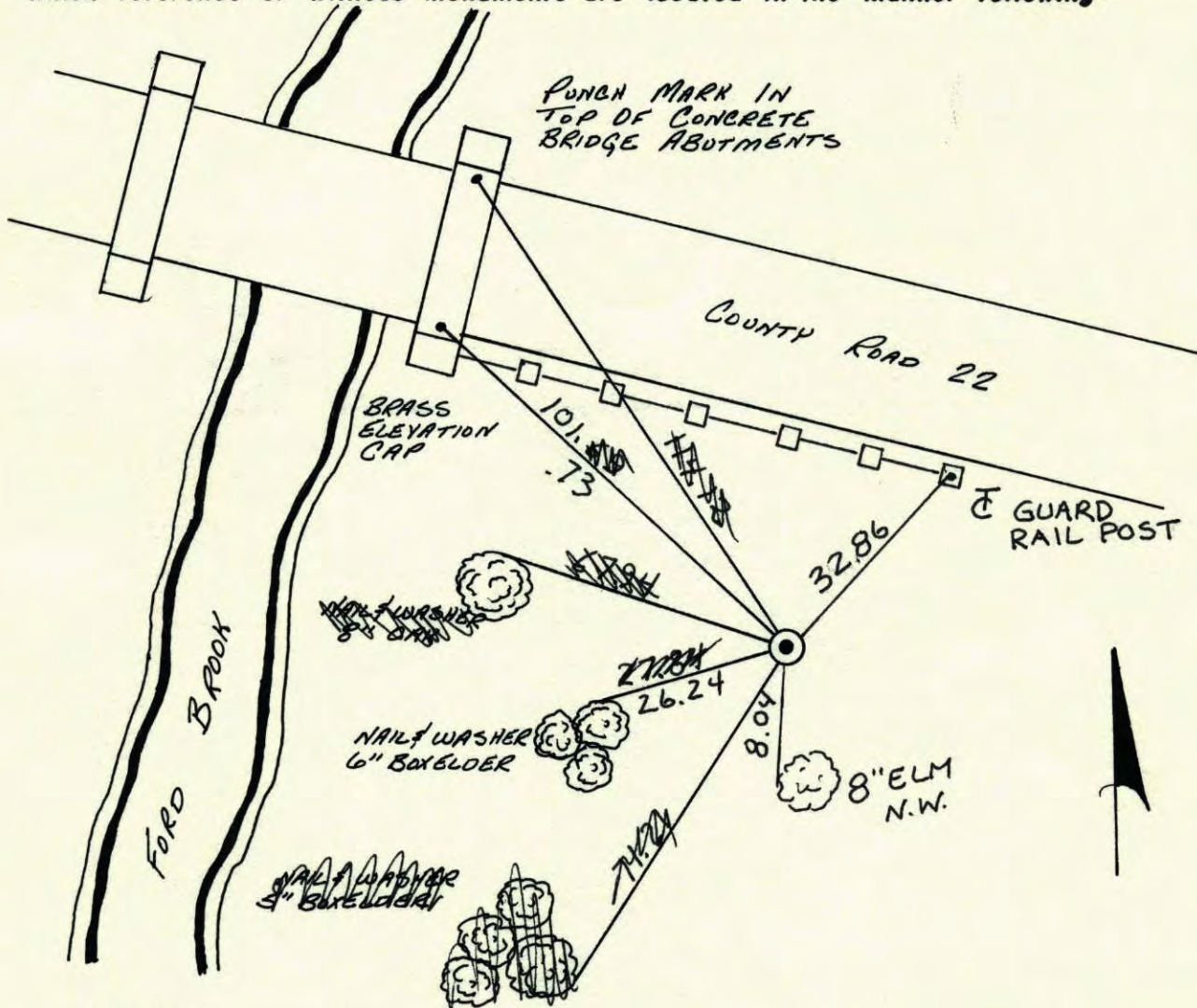
State of Minnesota

S.E. Corner of Sec. 23 Township 33 Range 25

I hereby certify that on the 2 day of OCTOBER, 1963, I found the described corner which was evidenced by 6" x 6" GRANITE

and I further certify that to perpetuate the location of said corner, I did, at the exact location thereof, place a permanent marker consisting of CAST IRON MONUMENT

which reference or witness monuments are located in the manner following:



Revised date

7-1-85
4-13-88
10-10-02

By

ROSS
LARSON

Minnesota State Plane Coordinates
South Zone

Y _____ X _____

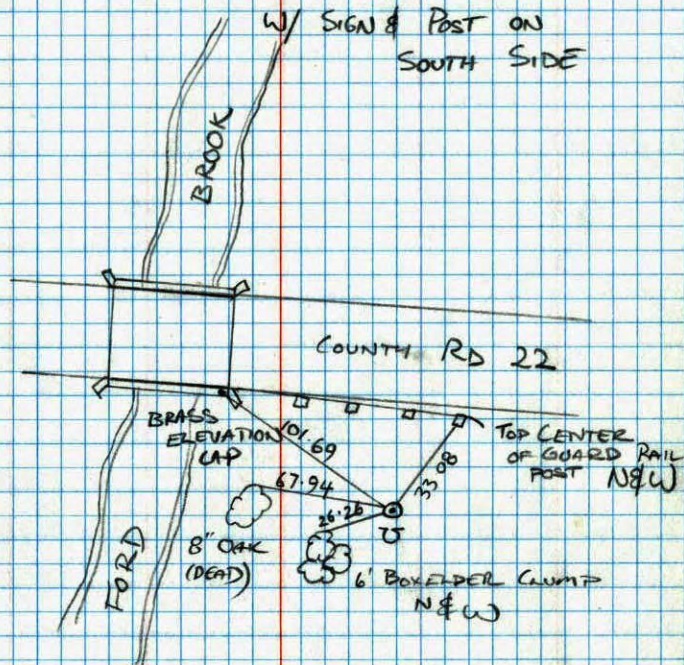
County Surveyor

Date

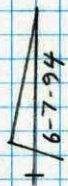
Registered Land Surveyor No. _____

SOUTH EAST COR SEC 23 T33 R 25

RETIE CAST IRON MONUMENT



M STEWART
J. ANDERSON

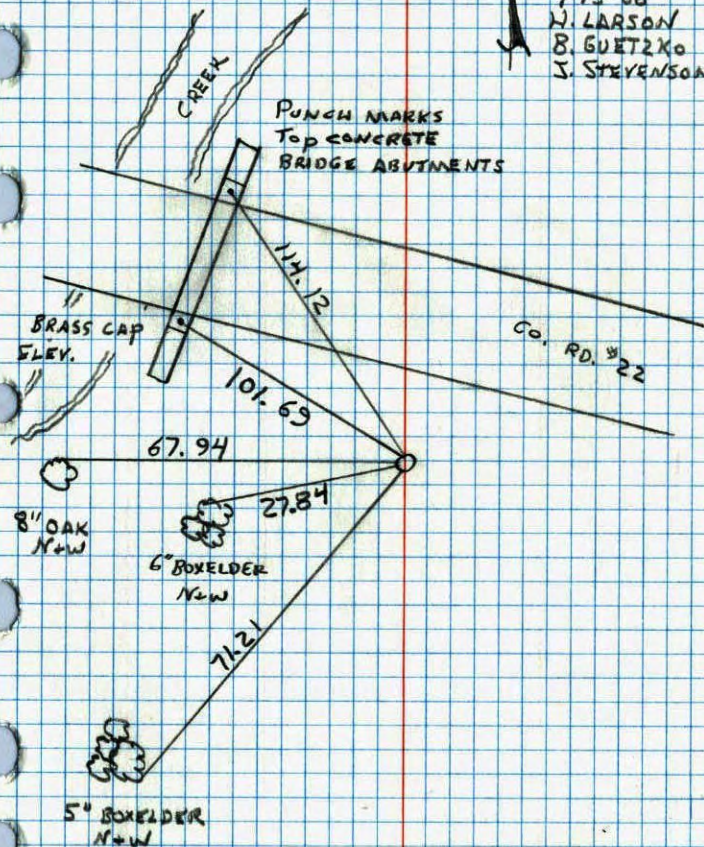


SE CORNER SECTION 23 T33 R25

GRANITE WAS REMOVED BY CONSTRUCTION
RESET CAST IRON AND TIED. C.I. DOWN

1' ±

200' 58°
4-13-88
H. LARSON
B. GUETZKO
J. STEVENSON



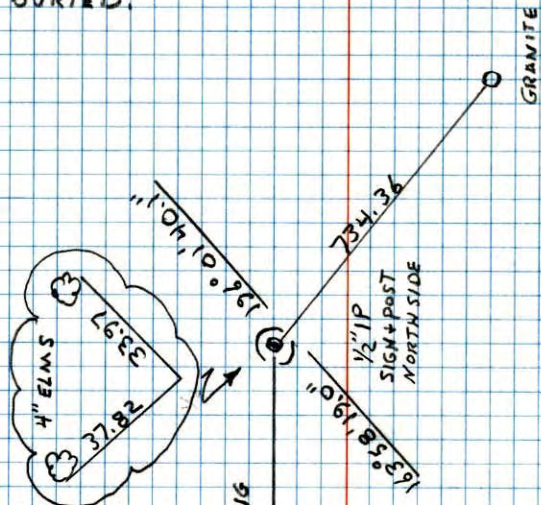
NO. 448

TELEPHONE

CONSTRUCTION TIE

SEC COR. SECTION 23 T33 R25

GRANITE STILL IN GROUND BUT BURIED.

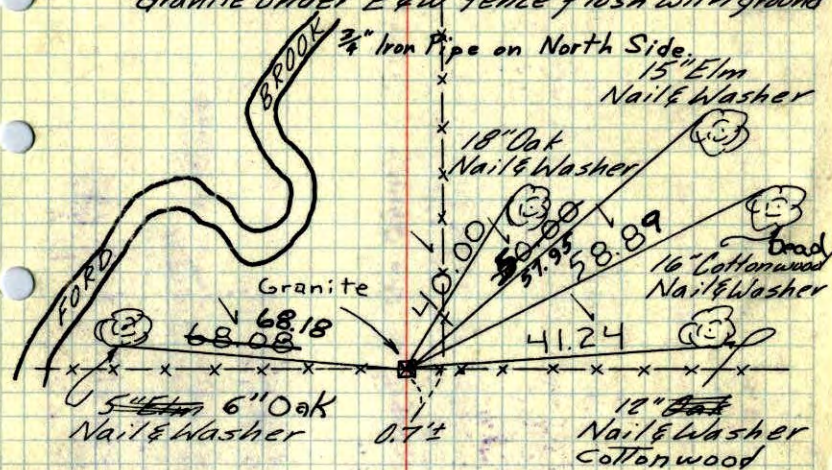


H. LARSON
B. GUETZKO
W. GRAMS
8-19-87

MIDDLE
OF CHIMNEY
WHITE HOUSE ON
CO. RD. 866

SE 23 79
N.W. Cor. Sec. 25-33-25

Found 6"x6" Granite Monument
Granite under E&W fence flush with ground



Oct. 2, 1963

J. Oliver
M. D. Anderson
E. Madson

Pasture

Tie check
July 26, 1973
B. Olson
D. Brien
D. Farmer

TIE CHECK
7-20-79
B. STEPHENS
D. STEPHENS
P. ROSS

Tie check
Aug. 6, 1965
M. D. Anderson
J. Dunlop

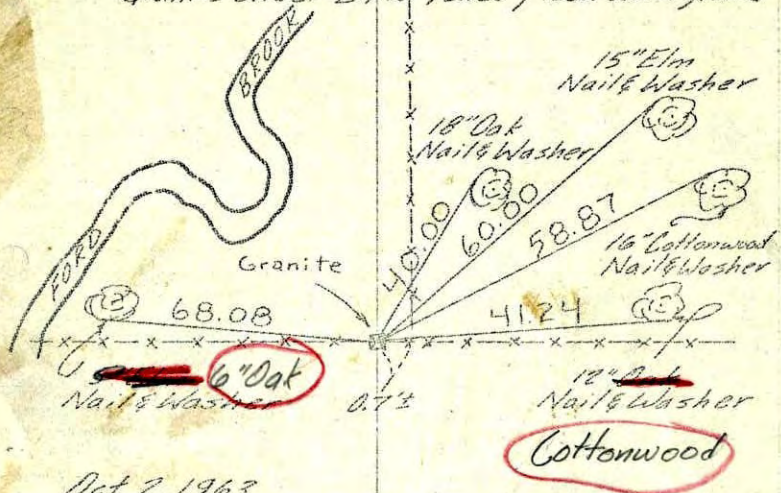
TIE CHECK
7-26-76
G. ADAMS
S. BRIEN
J. STEPHENS

TIECHECK
8-6-82
P. ROSS
P. HORNBY

Tie Check
July 23, 1968
D. Powell
R. Olson
B. Olson

TEMPERATURE CORRECTED ROLAND W. ANDERSON
AND HORIZONTALLY COUNTY SURVEYOR
TAPED MEASUREMENTS ANOKA COUNTY, MINNESOTA

SE 23 25
 N.W. Cor. Sec. 25-33-25
 Found 6"x6" Granite Monument
 Granite under E&W fence flush with ground



Oct. 2, 1963

J. Oliver
 M.D. Anderson
 E. Madson

Pasture

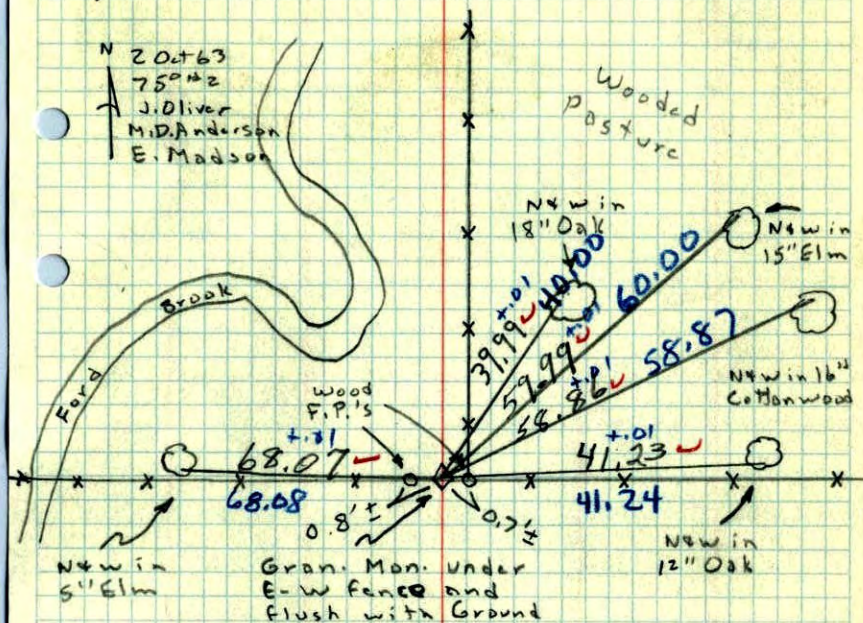
Entered
 HL

TEMPERATURE CORRECTED
 AND HORIZONTALLY
 TAPED MEASUREMENTS

ROLAND W. ANDERSON
 COUNTY SURVEYOR
 ANOKA COUNTY, MINNESOTA

SE 23 25
 N.W. Cor. Sec. 25, T33, R25

Found 6" Sq. Granite Mon. with X in top
 set to Cardinal Points.



N 20 Oct 63
 750 AM
 J. Oliver
 M.D. Anderson
 E. Madson

Wooded
 pasture

Gran. Mon. Under
 E-W fence and
 flush with Ground

Pasture

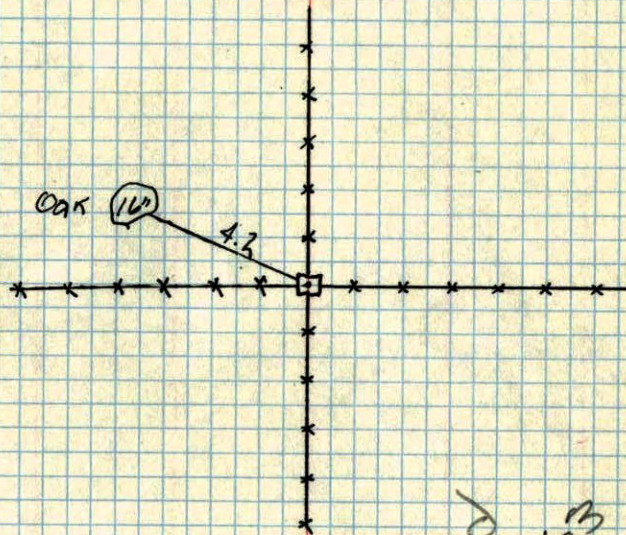
SE

23

14 ✓

N.W. CORNER OF SEC. 15, T33, R25

GRANITE



Retied
Oct. 2, 1963
M.A.G.

Aug 11, 1945
CARTWRIGHT