

CERTIFICATE OF LOCATION OF GOVERNMENT CORNER

County of Anoka

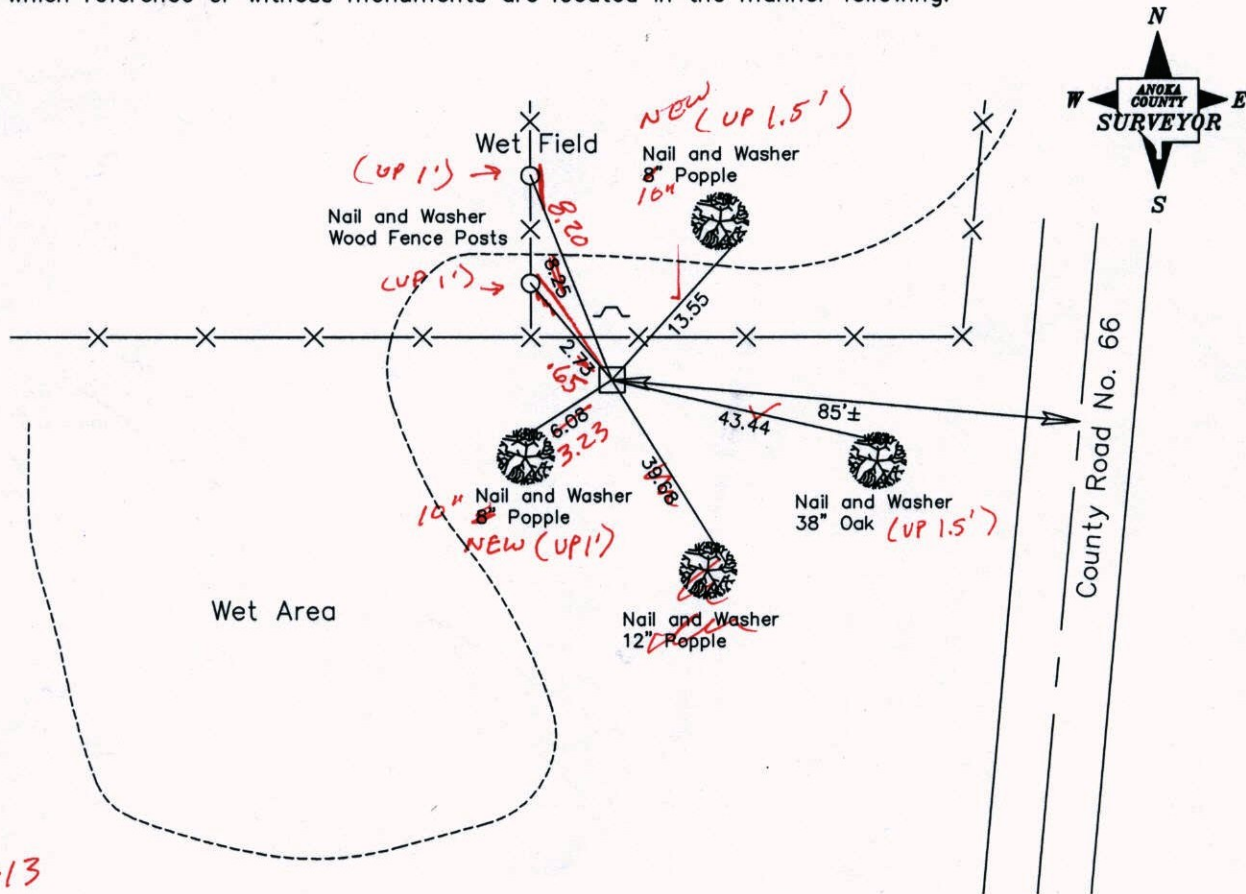
State of Minnesota

South 1/4 Corner of Sec. 23, Township 33, Range 25

I hereby certify that on the 22nd day of July, 1969, I found the described corner which was evidenced by a granite monument

and I further certify that to perpetuate the location of said corner, I did, at the exact location thereof, place a permanent marker consisting of a granite monument with a sign and post on the north side

which reference or witness monuments are located in the manner following:



*3-20-13
BK-SS
TAPED*

Revised date

8-30-88
6-7-94
10-1-02

N.A.D. 1983 Co-ordinates
(1996 Adjustment)

County Project Co-ordinates		State Plane Co-ordinates	
Northing	206725.7022	Y	_____
Easting	460772.0241	X	_____

Date 10-1-02

CERTIFICATE OF LOCATION OF GOVERNMENT CORNER

County of Anoka

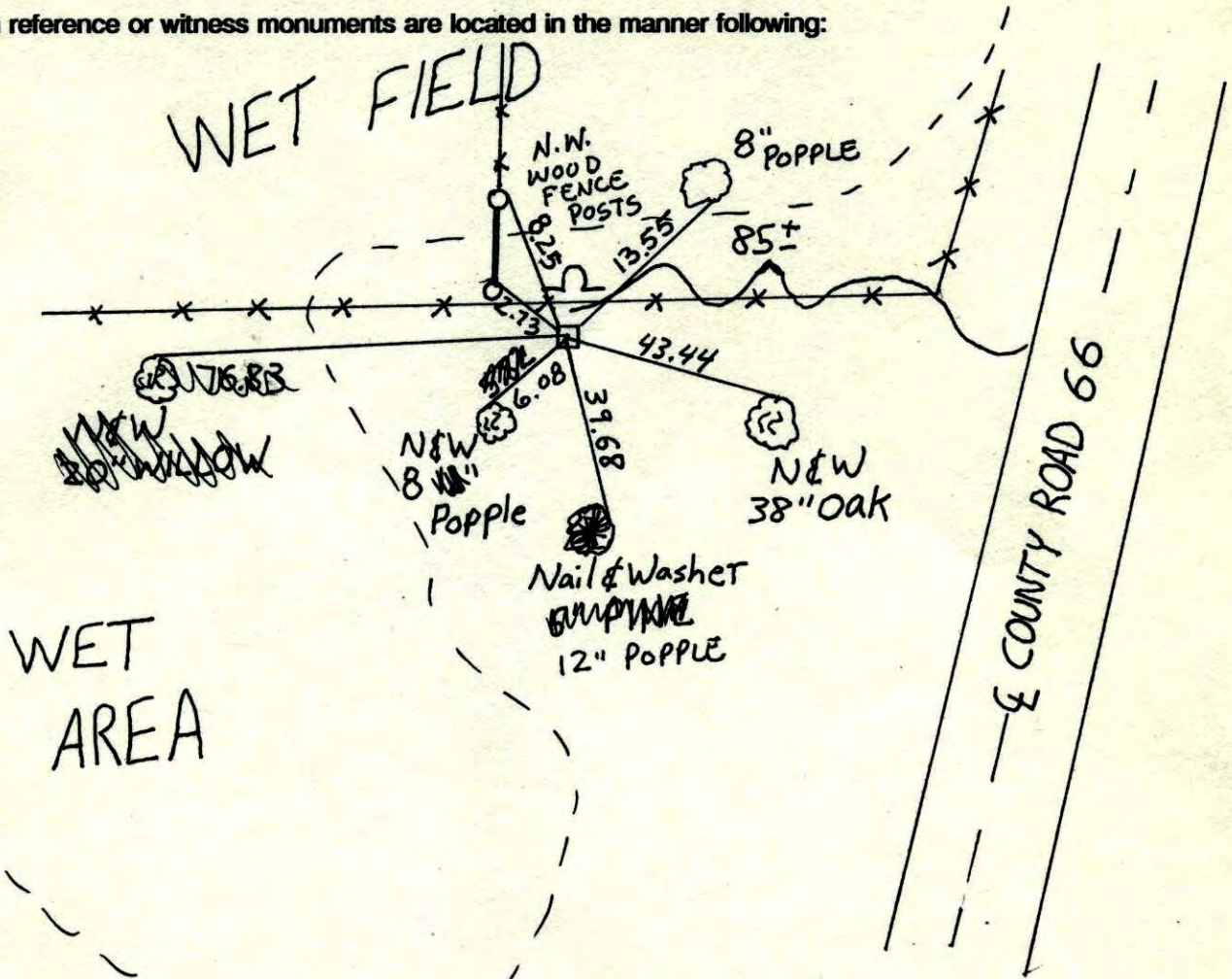
State of Minnesota

SOUTH 1/4 Corner of Sec. 23 Township 33 Range 25

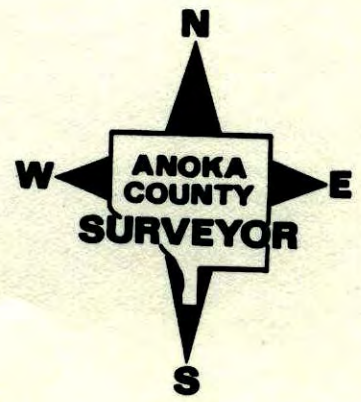
I hereby certify that on the 22 day of July, 19 69, I found the described corner which was evidenced by GRANITE MON

and I further certify that to perpetuate the location of said corner, I did, at the exact location thereof, place a permanent marker consisting of GRANITE MON
SIGN & POST NORTH SIDE

which reference or witness monuments are located in the manner following:



Revised date	Revised date	Revised date
8-30-88		
6-7-94		
10-1-02		



CERTIFICATE OF LOCATION OF GOVERNMENT CORNER

County of Anoka

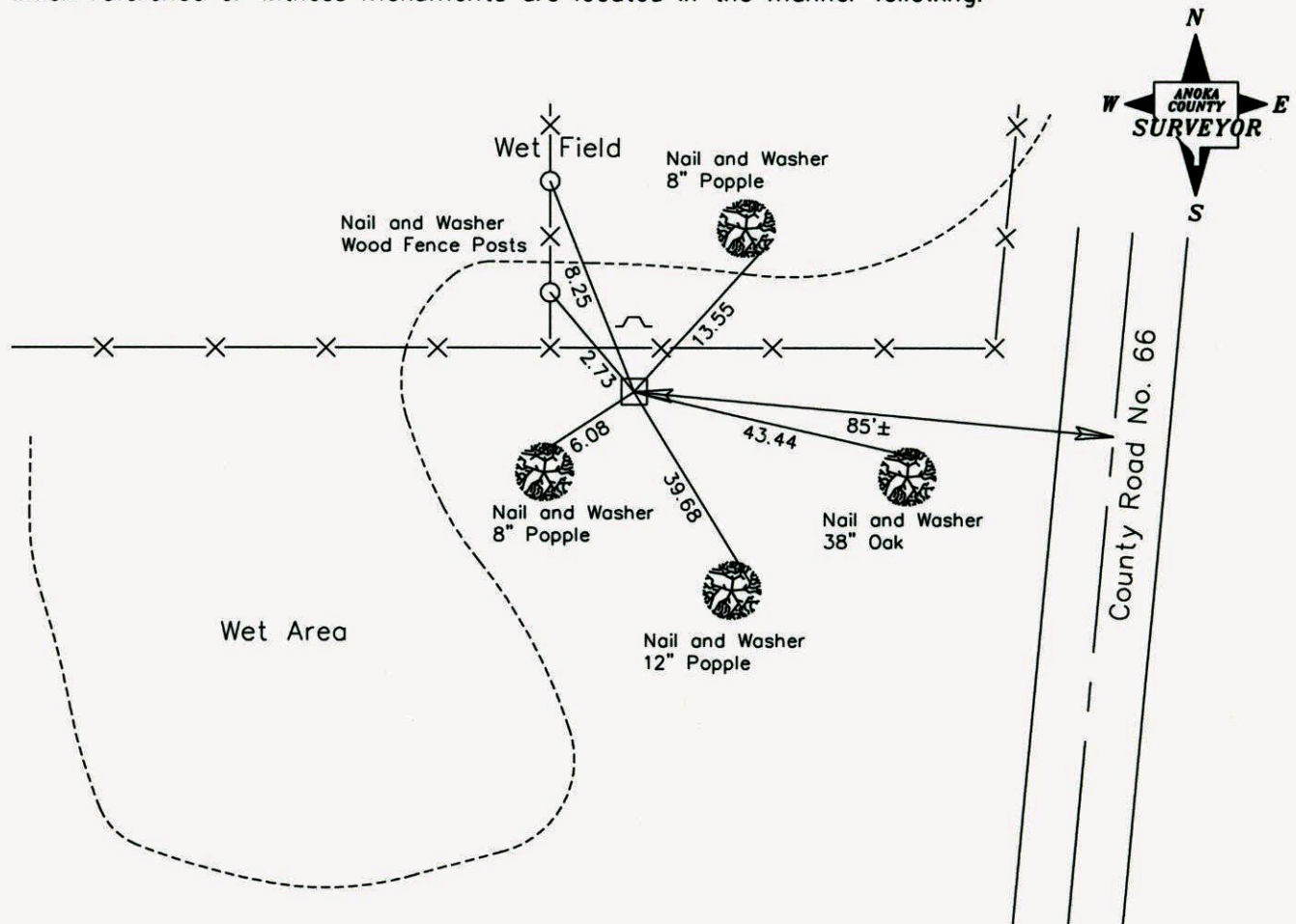
State of Minnesota

South 1/4 Corner of Sec. 23, Township 33, Range 25

I hereby certify that on the 22nd day of July, 1969, I found the described corner which was evidenced by a granite monument

and I further certify that to perpetuate the location of said corner, I did, at the exact location thereof, place a permanent marker consisting of a granite monument with a sign and post on the north side

which reference or witness monuments are located in the manner following:



Revised date

8-30-88
6-7-94
10-1-02

N.A.D. 1983 Co-ordinates
(1996 Adjustment)

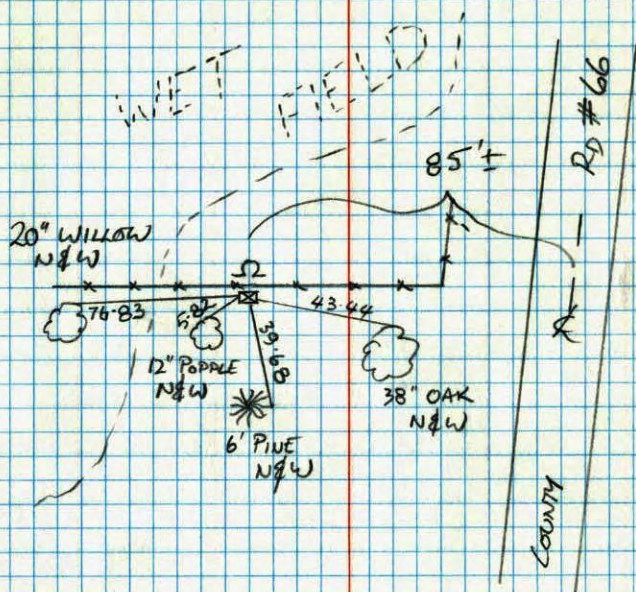
County Project Co-ordinates	State Plane Co-ordinates
Northing <u>206725.7022</u>	Y _____
Easting <u>460772.0241</u>	X _____

Date 10-1-02

SOUTH QUARTER SEC 23 T33 R25

RETIE GRANITE MONUMENT

W/ SIGN & POST ON NTH SIDE

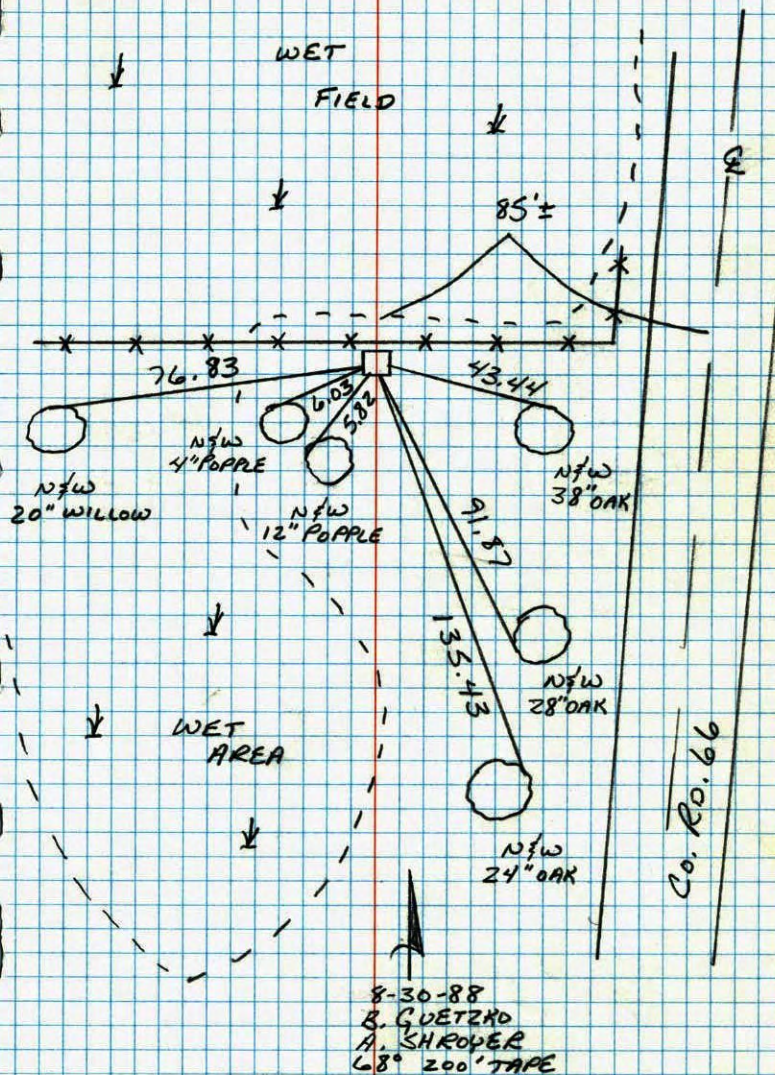


G-7-94

M. STEWART
J. ANDERSON

S/4 CORNER SEC 23 T33 R25

RETIED GRANITE MONUMENT

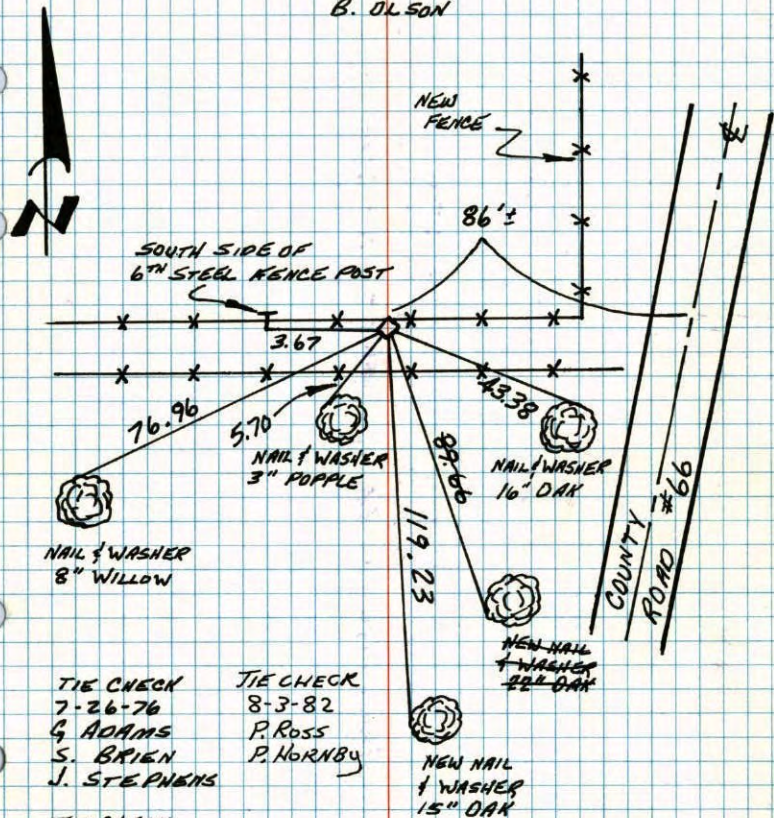


8-30-88
B. GUETZKO
A. SHROPER
68' 200' TAPE

S¹/₄ COR. SEC. 23-T33-R25

FOUND GRANITE MONUMENT UP 0.3'± UNDER

NEW FENCE. 22 JUL 69
 D. POWELL
 R. OLSON
 B. OLSON



TIE CHECK 7-26-76
 G. ADAMS
 S. BRIEN
 J. STEPHENS

TIE CHECK 7-12-79
 B. STEPHENS
 D. STEPHENS
 P. ROSS

TIE CHECK 8-3-82
 P. ROSS
 P. HORNBY

NEW NAIL & WASHER
 15" OAK

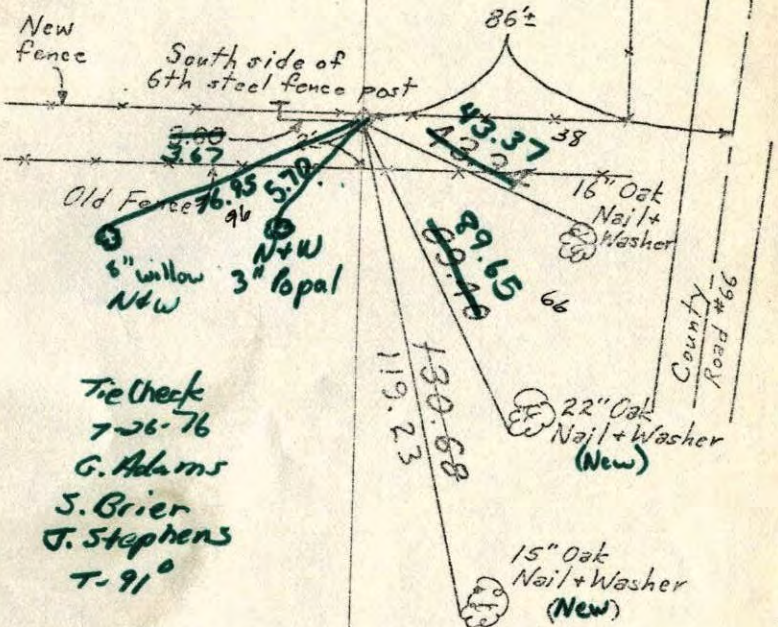
TEMPERATURE CORRECTED AND HORIZONTALLY TAPED MEASUREMENTS
 ROLAND W. ANDERSON
 COUNTY SURVEYOR
 ANOKA COUNTY, MINNESOTA

S¹/₄ Cor. Sec. 23-T33-R25

Found Granite Monument up 0.3'±
 under new fence.

July 22, 1969
 D. Powell
 R. Olson
 B. Olson

Tie check
 July 24, 1973
 B. Olson
 D. B.
 D. F.



Tie check 7-26-76
 G. Adams
 S. Grier
 J. Stephens
 T. 91°

TEMPERATURE CORRECTED AND HORIZONTALLY TAPED MEASUREMENTS

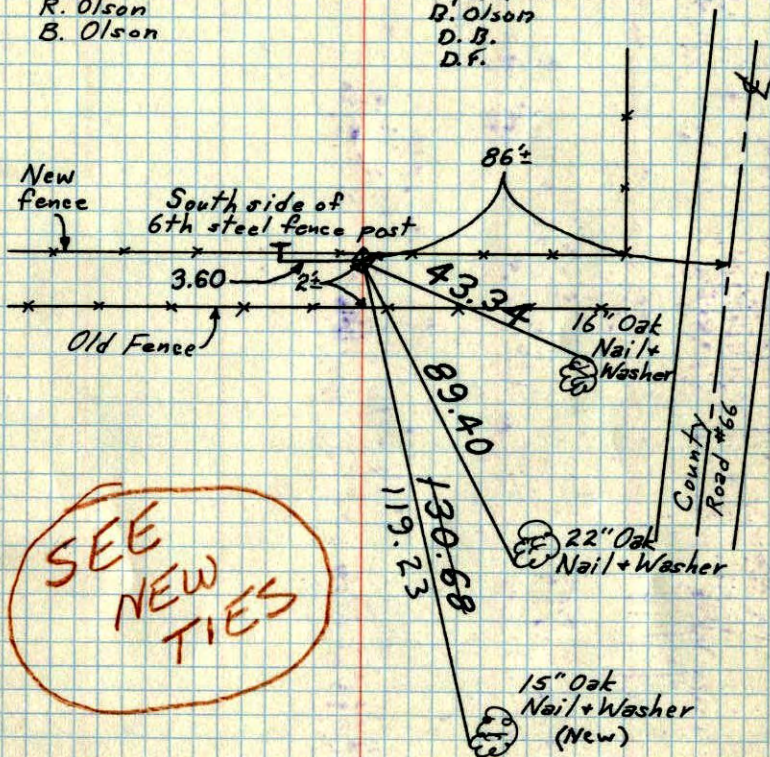
ROLAND W. ANDERSON
 COUNTY SURVEYOR
 ANOKA COUNTY, MINNESOTA

S $\frac{1}{4}$ Cor. Sec. 23-T33-R25

Found Granite Monument up 0.3'±
under new fence.

July 22, 1969
D. Powell
R. Olson
B. Olson

Tie check
July 24, 1973
D. Olson
D.B.
D.F.



SEE
NEW
TIES

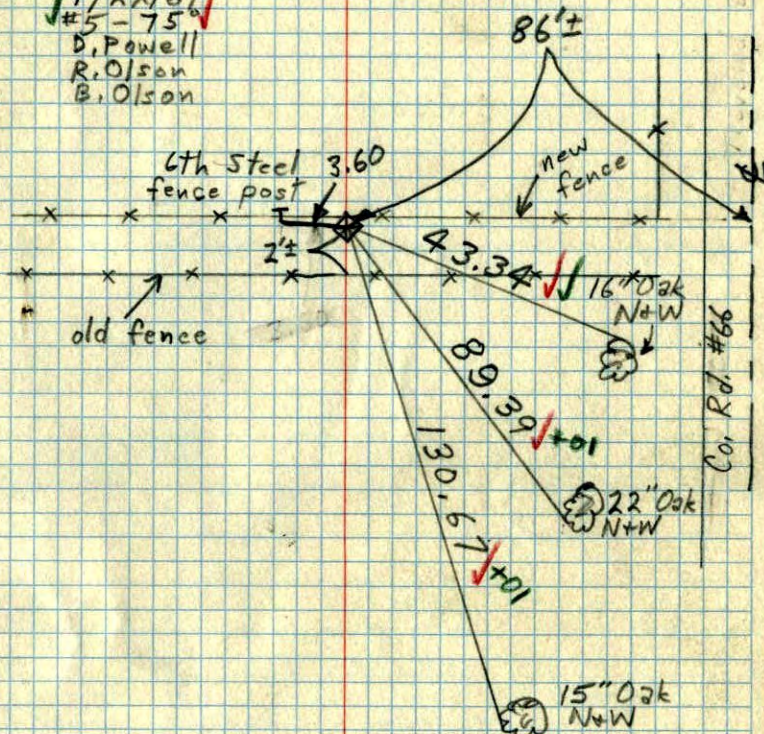
TEMPERATURE CORRECTED
AND HORIZONTALLY
TAPED MEASUREMENTS

ROLAND W. ANDERSON
COUNTY SURVEYOR
ANOKA COUNTY, MINNESOTA

S $\frac{1}{4}$ Cor. Sec. 23-T33-R25

Found Granite Men. up 0.3'±
under new fence.

7/22/69
#5-75
D. Powell
R. Olson
B. Olson



TEMPERATURE CORRECTED
AND HORIZONTALLY
TAPED MEASUREMENTS

ROLAND W. ANDERSON
COUNTY SURVEYOR
ANOKA COUNTY, MINNESOTA