

CERTIFICATE OF LOCATION OF GOVERNMENT CORNER

County of Anoka

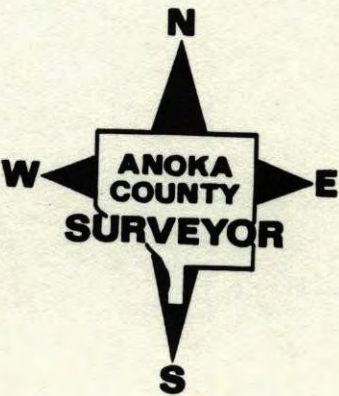
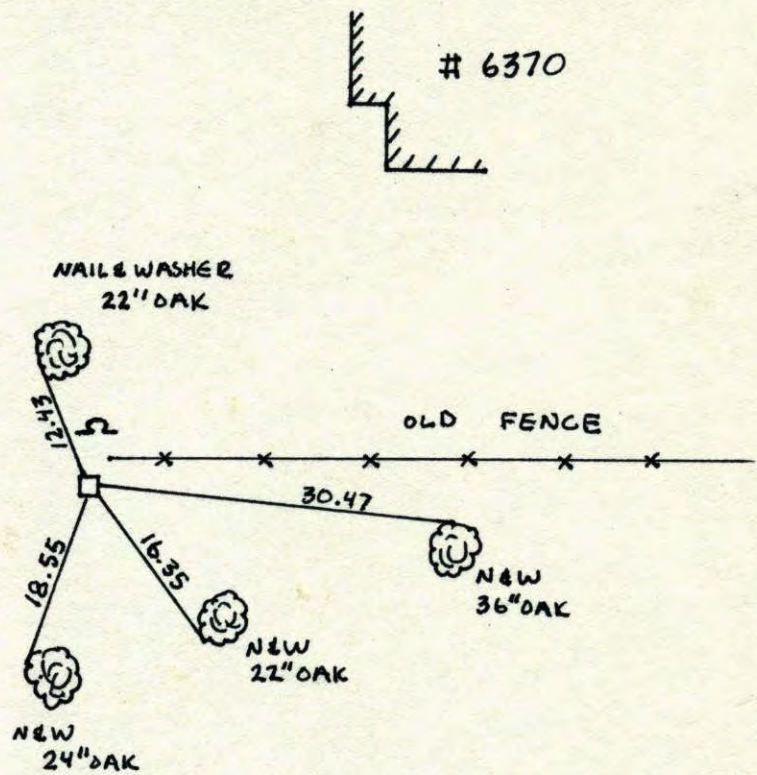
State of Minnesota

SOUTHEAST Corner of Sec. 22 Township 33 Range 25

I hereby certify that on the 29 day of JULY, 19 64, I found the described corner which was evidenced by GRANITE MONUMENT

and I further certify that to perpetuate the location of said corner, I did, at the exact location thereof, place a permanent marker consisting of GRANITE MONUMENT WITH SIGN AND POST ON THE NORTH SIDE

which reference or witness monuments are located in the manner following:

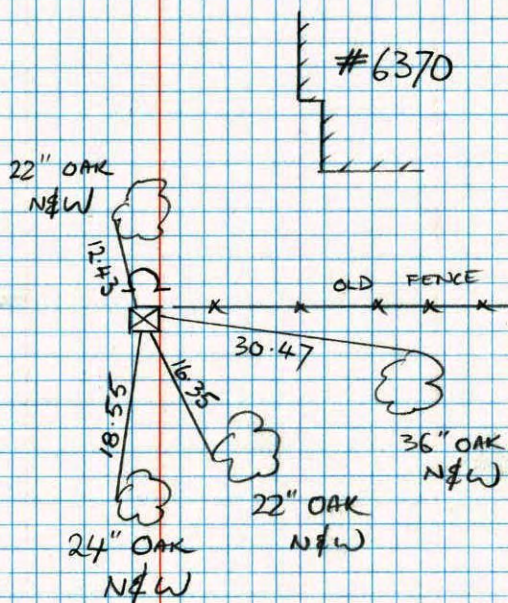


Revised date	Revised date	Revised date
8-30-88		
6-7-94		

SOUTHEAST COR. SEC. 22 T33 R25

RETIE GRANITE MONUMENT

W/ SIGN & POST ON NTH SIDE

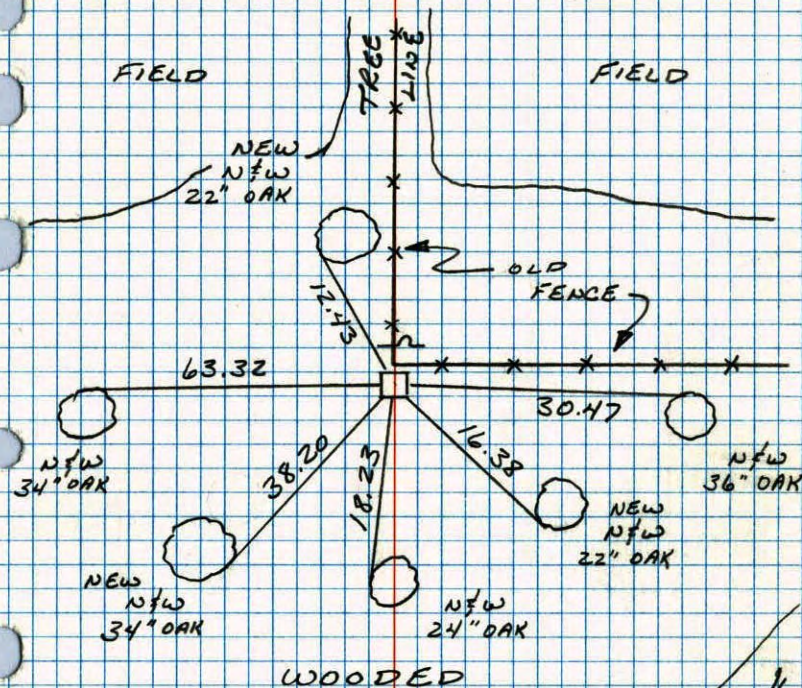


6-7-94

M. STEWART
J. ANDERSON

S. E. CORNER SEC 22 T33 R25

RETIED GRANITE MONUMENT. REPLACED
THREE NFW'S, OLD TIES CHECKED.

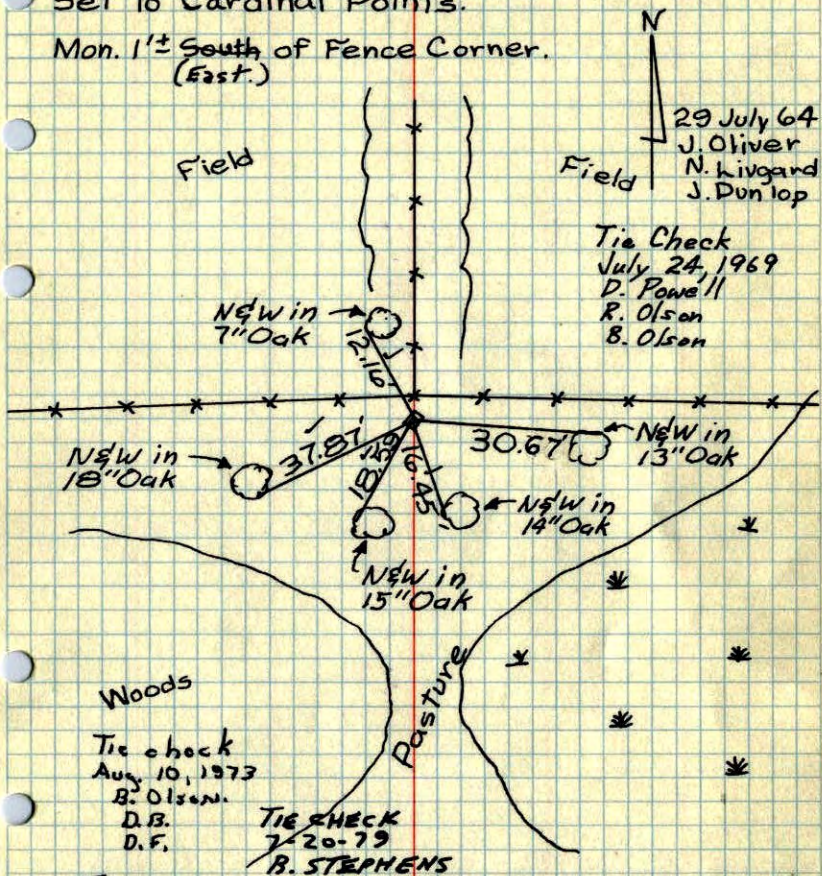


8-30-88
B. GOETZKO
A. SHROYER
70° 200' TAPE

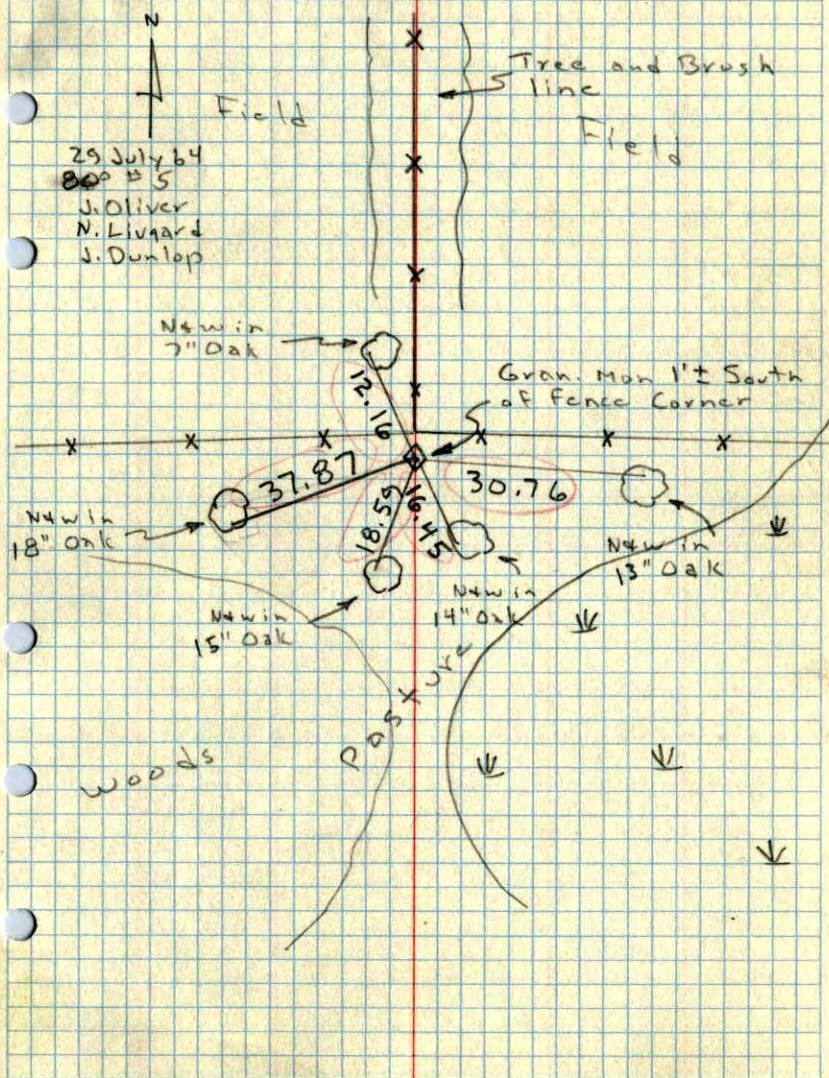
S.E. Cor. Sec. 22, T33, R25

Found 6" Sq. Granite Monument up 0.1' and

Set to Cardinal Points.

Mon. 1'± South of Fence Corner.
(East.)TEMPERATURE CORRECTED
AND HORIZONTALLY
TAPED MEASUREMENTSROLAND W. ANDERSON
COUNTY SURVEYOR
ANOKA COUNTY, MINNESOTATEMPERATURE CORRECTED
AND HORIZONTALLY
TAPED MEASUREMENTS

SE Cor. Sec. 22, T33, R25

Found 6" Sq. Granite Monument up 0.2'
and set to Cardinal Points.TEMPERATURE CORRECTED
AND HORIZONTALLY
TAPED MEASUREMENTSROLAND W. ANDERSON
COUNTY SURVEYOR
ANOKA COUNTY, MINNESOTATEMPERATURE CORRECTED
AND HORIZONTALLY
TAPED MEASUREMENTS

Found & Tied
29 July 64
J. C.

S.E. Corn.
Sec. 22, T33, R25

exists a Red Granite
about 1' south of
Fence Corner, up 0.2 foot
