

CERTIFICATE OF LOCATION OF GOVERNMENT CORNER

County of Anoka

State of Minnesota

North $\frac{1}{4}$ Corner of Sec. 27 Township 33 Range 25

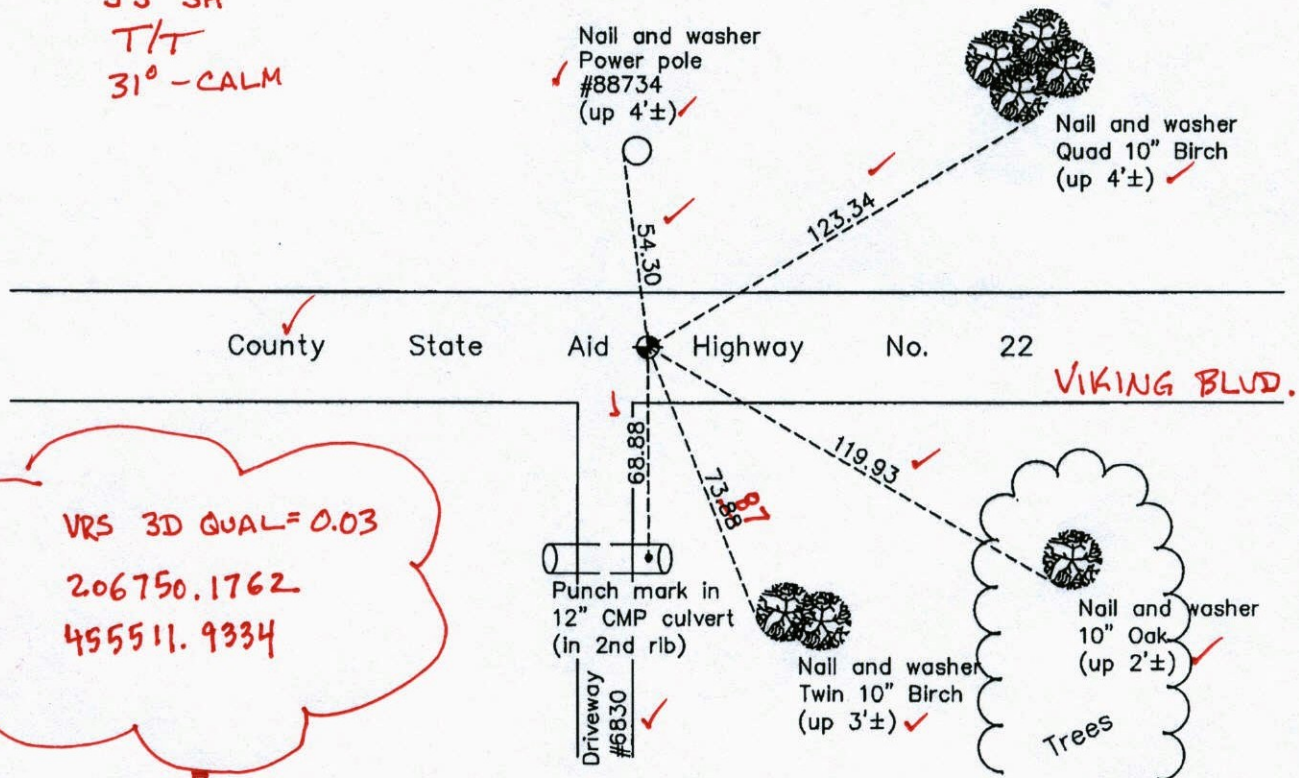
On the 15th day of June, 1966, the described corner was evidenced by area resurvey

and to perpetuate the location of said corner, at the exact location thereof, a permanent marker was placed consisting of a cast iron monument

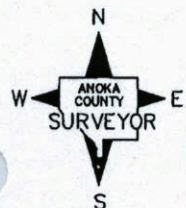
AND on the 12th day of August, 2011, said permanent marker was replaced with a slimline cast iron monument set in concrete road surface after construction and the ties were updated

Updated reference ties are as shown below.

3/27/13
JS SH
T/T
31° - CALM



VRS 3D QUAL = 0.03
 206750.1762
 455511.9334



Revision Date

8/16/11

N.A.D. 1983 Coordinates
(1996 Adjustment)

County Project Coordinates	
Northing	206750.1837
Easting	455511.9402
Date	9/03/02

I hereby certify that this United States public land survey monument record is correct and complete to the best of my knowledge and belief.

Larry D. Holum Date 8/16/11
 Larry D. Holum, Anoka County Surveyor
 Minnesota License Number 18165

CERTIFICATE OF LOCATION OF GOVERNMENT CORNER

County of Anoka

State of Minnesota

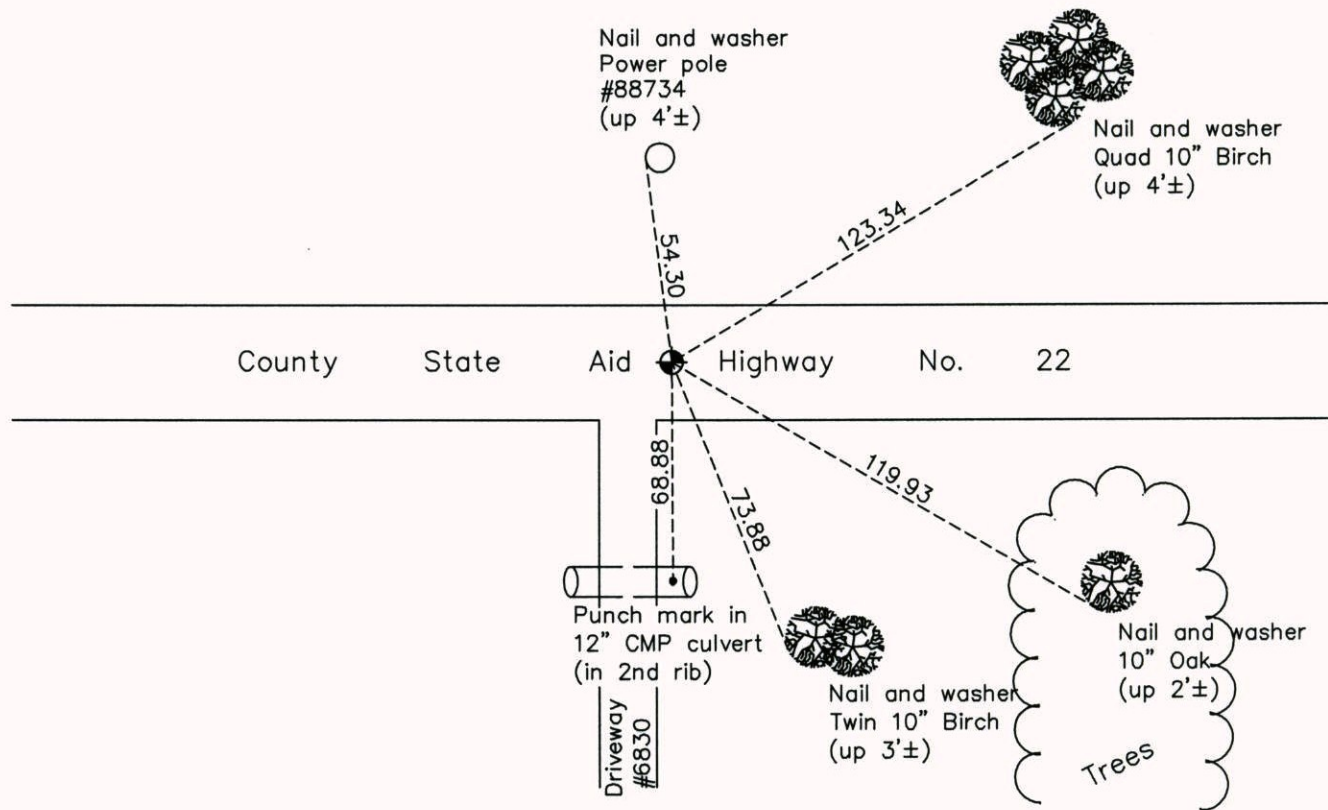
North $\frac{1}{4}$ Corner of Sec. 27 Township 33 Range 25

On the 15th day of June, 1966, the described corner was evidenced by area resurvey

and to perpetuate the location of said corner, at the exact location thereof, a permanent marker was placed consisting of a cast iron monument

AND on the 12th day of August, 2011, said permanent marker was replaced with a slimline cast iron monument set in concrete road surface after construction and the ties were updated

Updated reference ties are as shown below.



ANOKA COUNTY SURVEYOR

Revision Date

8/16/11

N.A.D. 1983 Coordinates
(1996 Adjustment)

County Project Coordinates	
Northing	206750.1837
Easting	455511.9402
Date	9/03/02

I hereby certify that this United States public land survey monument record is correct and complete to the best of my knowledge and belief.

Larry D. Hoium Date 8/16/11

Larry D. Hoium, Anoka County Surveyor

Minnesota License Number 18165

CERTIFICATE OF LOCATION OF GOVERNMENT CORNER

County of Anoka State of Minnesota

North 1/4 Corner of Sec. 27, Township 33, Range 25

I hereby certify that on the 15th day of June, 1966, I found the described corner which was evidenced by Area Resurvey

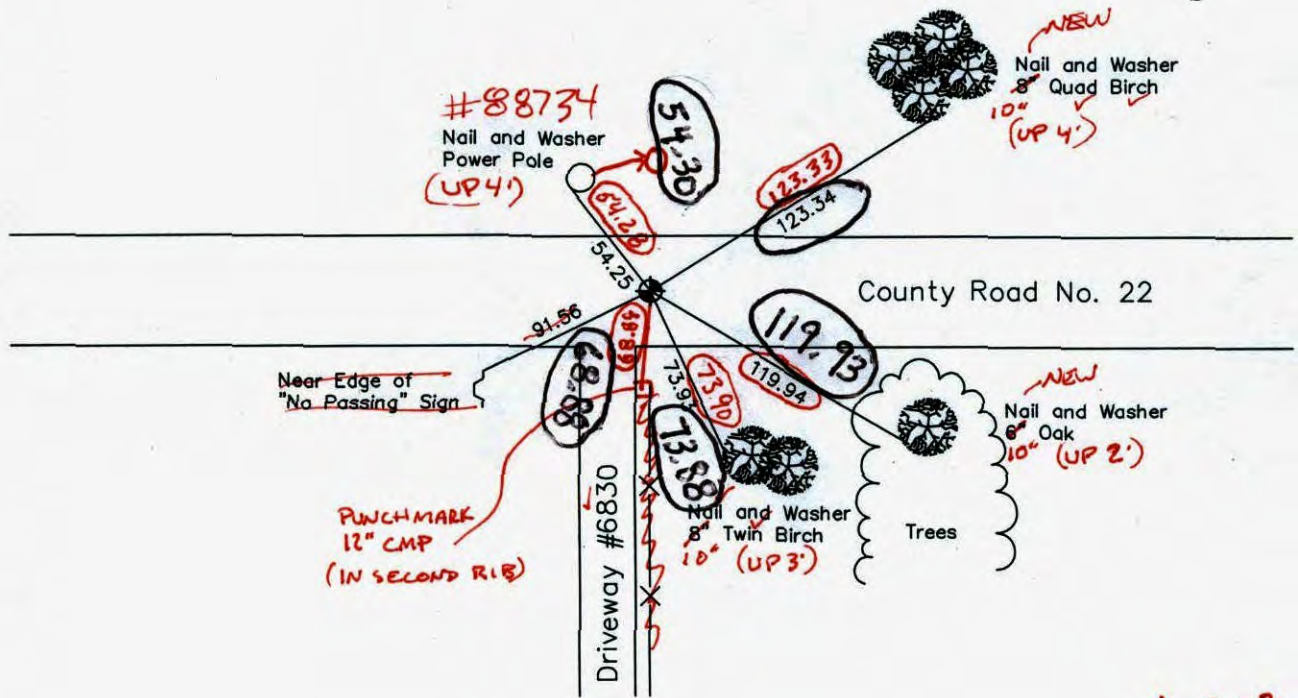
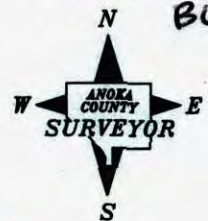
and I further certify that to perpetuate the location of said corner, I did, at the exact location thereof, place a permanent marker consisting of a cast iron monument

JS SH SS 8/12/11 RESET SLIM CIM IN CONC RD, CHECKED TIES

which reference or witness monuments are located in the manner following:

CIRCLED IN BLACK INK

**5/27/11 JS SH
RETIED AND
REMOVED FOR
MILL & OVERLAY**



**S 0.02
W 0.03**

Revised date

8-30-88
6-7-94

N.A.D. 1983 Co-ordinates
(1996 Adjustment)

County Project Co-ordinates		State Plane Co-ordinates	
Northing	206750.1837	Y	_____
Easting	455511.9402	X	_____

Date 9-3-02

CERTIFICATE OF LOCATION OF GOVERNMENT CORNER

County of Anoka

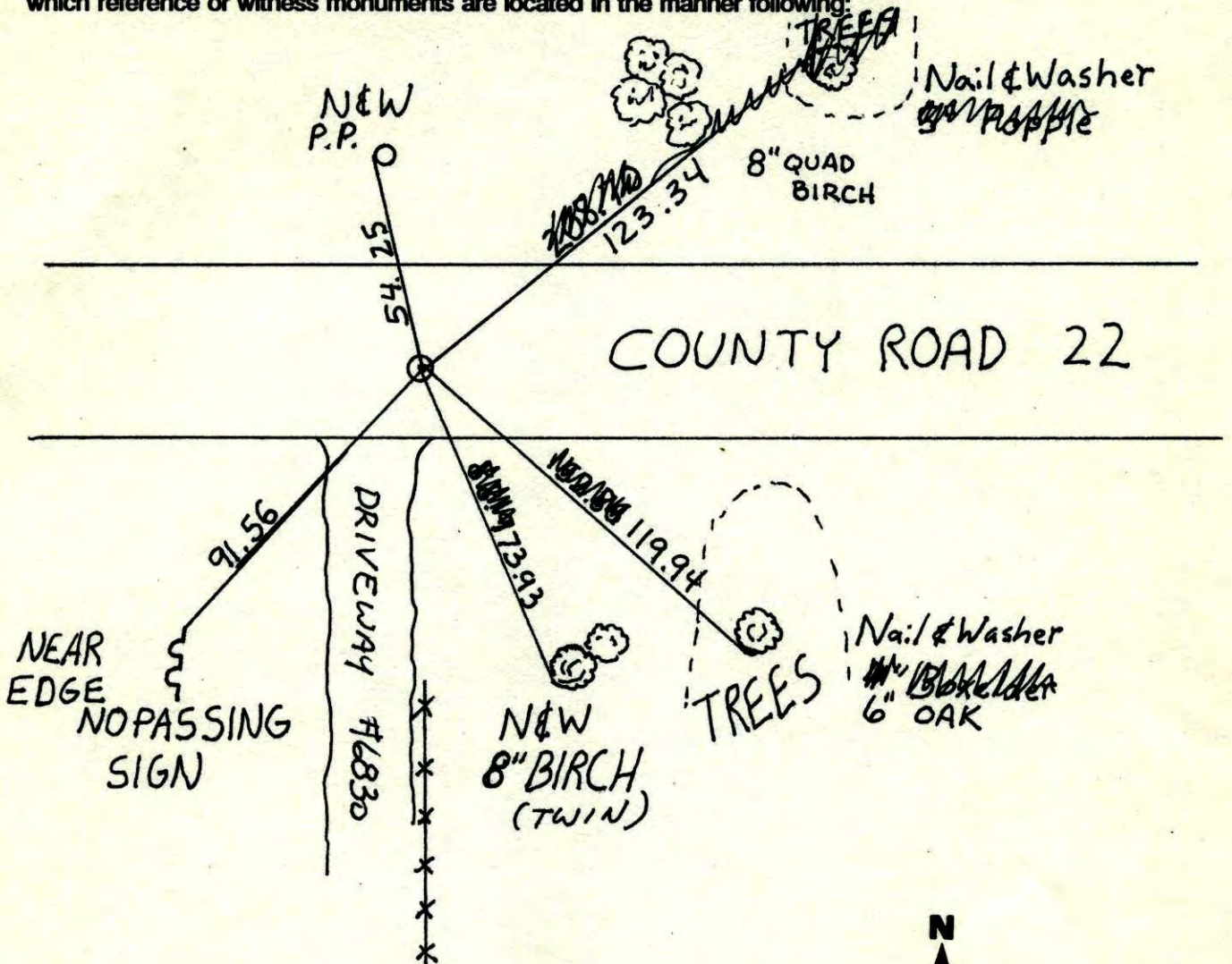
State of Minnesota

NORTH 1/4 Corner of Sec. 27 Township 33 Range 25

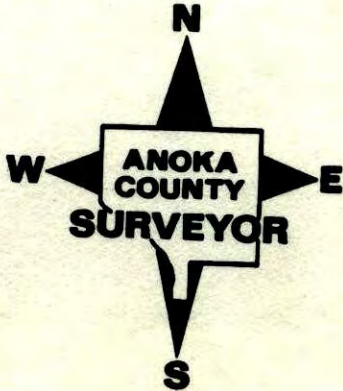
I hereby certify that on the 15 day of JUNE, 1966, I found the described corner which was evidenced by AREA RESURVEY

and I further certify that to perpetuate the location of said corner, I did, at the exact location thereof, place a permanent marker consisting of CAST IRON MON.

which reference or witness monuments are located in the manner following:

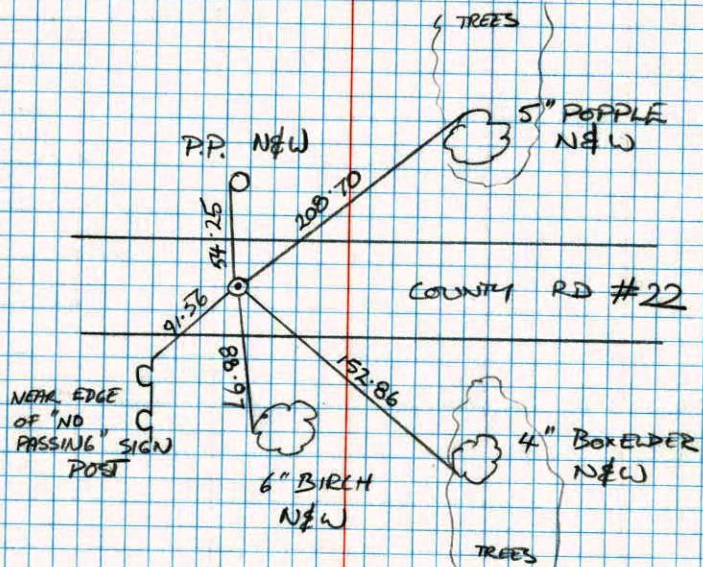


Revised date	Revised date	Revised date
8-30-88		
6-7-94		

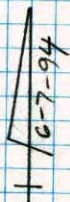


NORTH 1/4 SEC 27 T33 R25

RETIRED CAST IRON MONUMENT



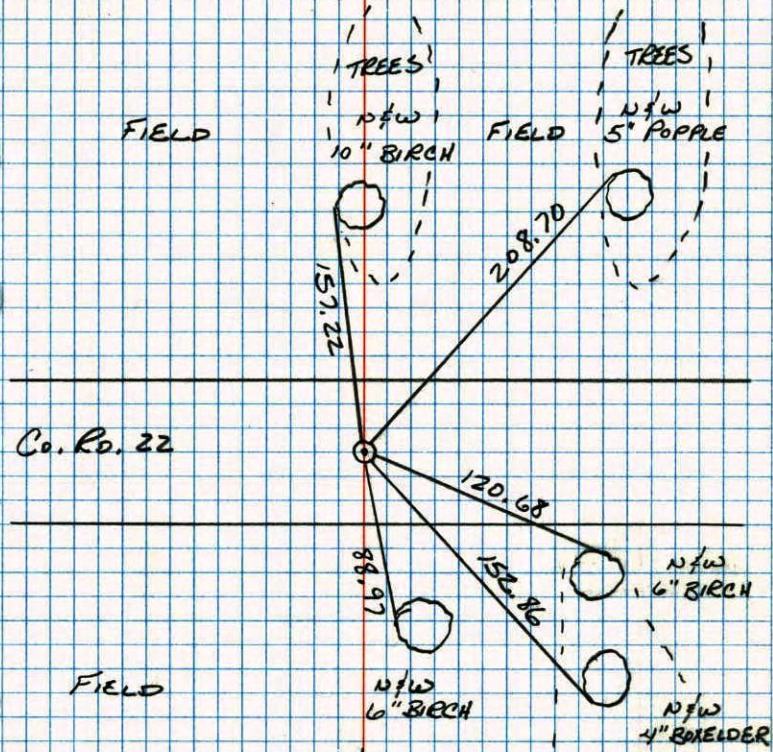
NEAR EDGE OF "NO PASSING" SIGN POST



M. STEWART
J. ANDERSON

N 1/4 CORNER SEC 27 T33 R25

RESET AND RETIRED CAST IRON MONUMENT.



Co. Rd. 22

FIELD

8-30-88
B. GUETZKO
A. SHROPER
72° 200' TAPE

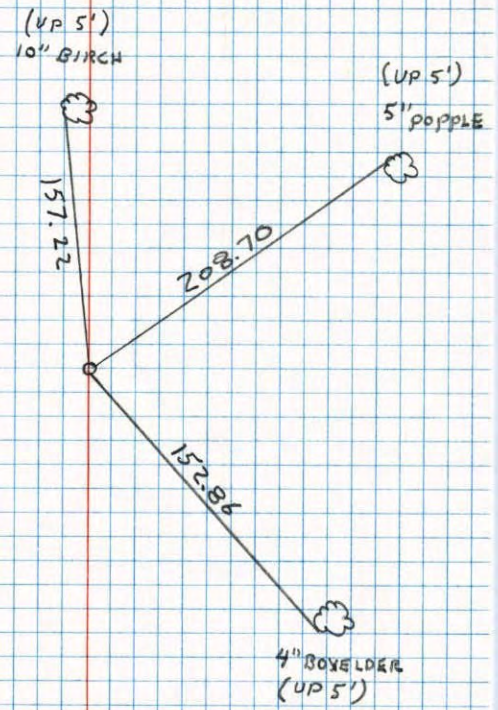
FIELD

TREES

CONSTRUCTION TIES

N
S 1/4 CORNER SECTION 27 T33 R25

TIED AND REMOVED CAST IRON MON.

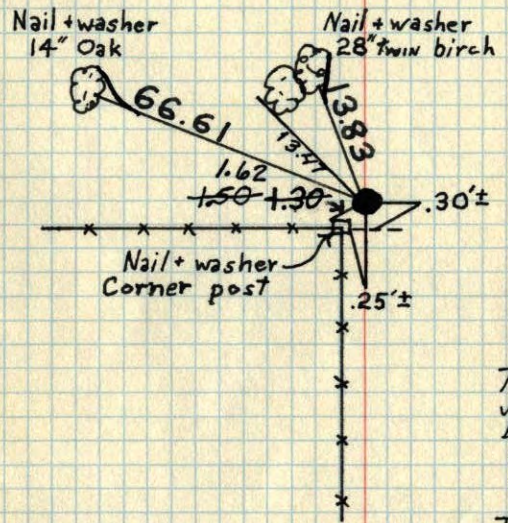


H. LARSON
B. GUSTZIKO
8-20-87

N 1/4 Cor. Sec. 27, T33, R25

Set Cast Iron Mon. from area resurvey.
Set Mon. flush.

June 15, 1966
M.D. Anderson
D. Potter
D. Powell



Tie Check
July 18, 1969
D. Powell
R. Olson
B. Olson

Tie Check
July 31, 1973
B. Olson
D. Brien
D. Farmer

TIE CHECK	TIE CHECK
7-27-76	7-20-79
G. ADAMS	B. STEPHENS
S. BRIEN	D. STEPHENS
J. STEPHENS	P. ROSS

TIE CHECK
8-9-82
P. ROSS
P. HORNBY

TEMPERATURE CORRECTED
AND HORIZONTALLY
TAPED MEASUREMENTS

ROLAND W. ANDERSON
COUNTY SURVEYOR
ANOKA COUNTY, MINNESOTA

N. 1/4 Cor. Sec. 27-T33-R25

Set C.I. Mon. from area resurvey

set flush

June 15, 1966

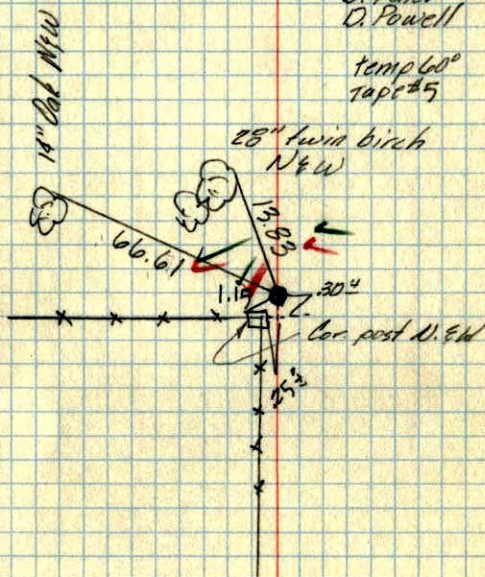
M. D. Anderson

D. Pether

D. Powell

Temp 60°

Tape #5



TEMPERATURE CORRECTED
AND HORIZONTALLY
TAPED MEASUREMENTS

ROLAND W. ANDERSON
COUNTY SURVEYOR
ANOKA COUNTY, MINNESOTA