

CERTIFICATE OF LOCATION OF GOVERNMENT CORNER

County of Anoka

State of Minnesota

Northwest Corner of Sec. 27 Township 33 Range 25

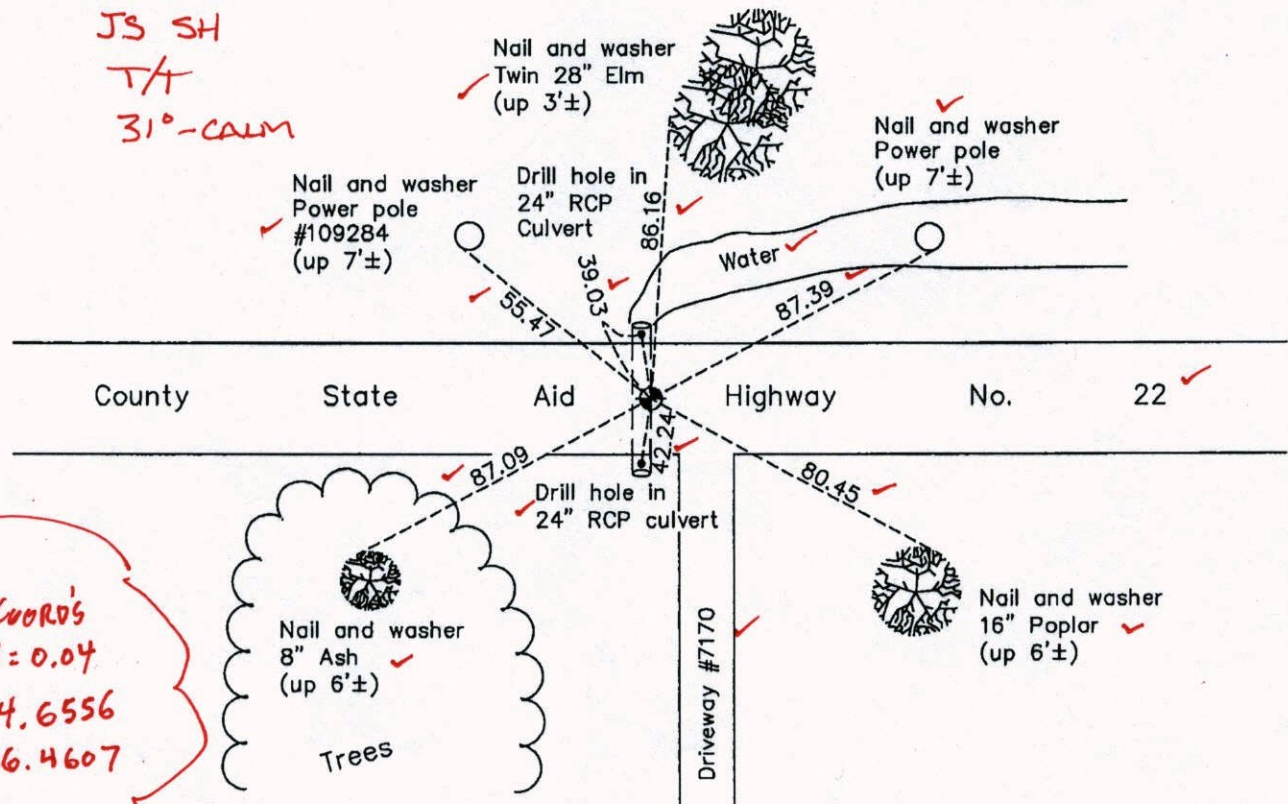
On the 15th day of June, 1966, the described corner was evidenced by area resurvey

and to perpetuate the location of said corner, at the exact location thereof, a permanent marker was placed consisting of a cast iron monument

AND on the 12th day of August, 2011, said permanent marker was replaced with a slimline cast iron monument set in concrete road surface after construction and the ties were updated

Updated reference ties are as shown below.

3/27/13
JS SH
T/A
31°-CALM



VRS COORDS
3D Q = 0.04
206774.6556
452886.4607

N
W ANOKA COUNTY SURVEYOR E
S

Revision Date
8/16/11

N.A.D. 1983 Coordinates
(1996 Adjustment)

County Project Coordinates	
Northing	206774.6768 ✓
Easting	452886.4576 ✓
Date	9/03/02

I hereby certify that this United States public land survey monument record is correct and complete to the best of my knowledge and belief.

Larry D. Holium Date 8/16/11

Larry D. Holium, Anoka County Surveyor
Minnesota License Number 18165

CERTIFICATE OF LOCATION OF GOVERNMENT CORNER

County of Anoka

State of Minnesota

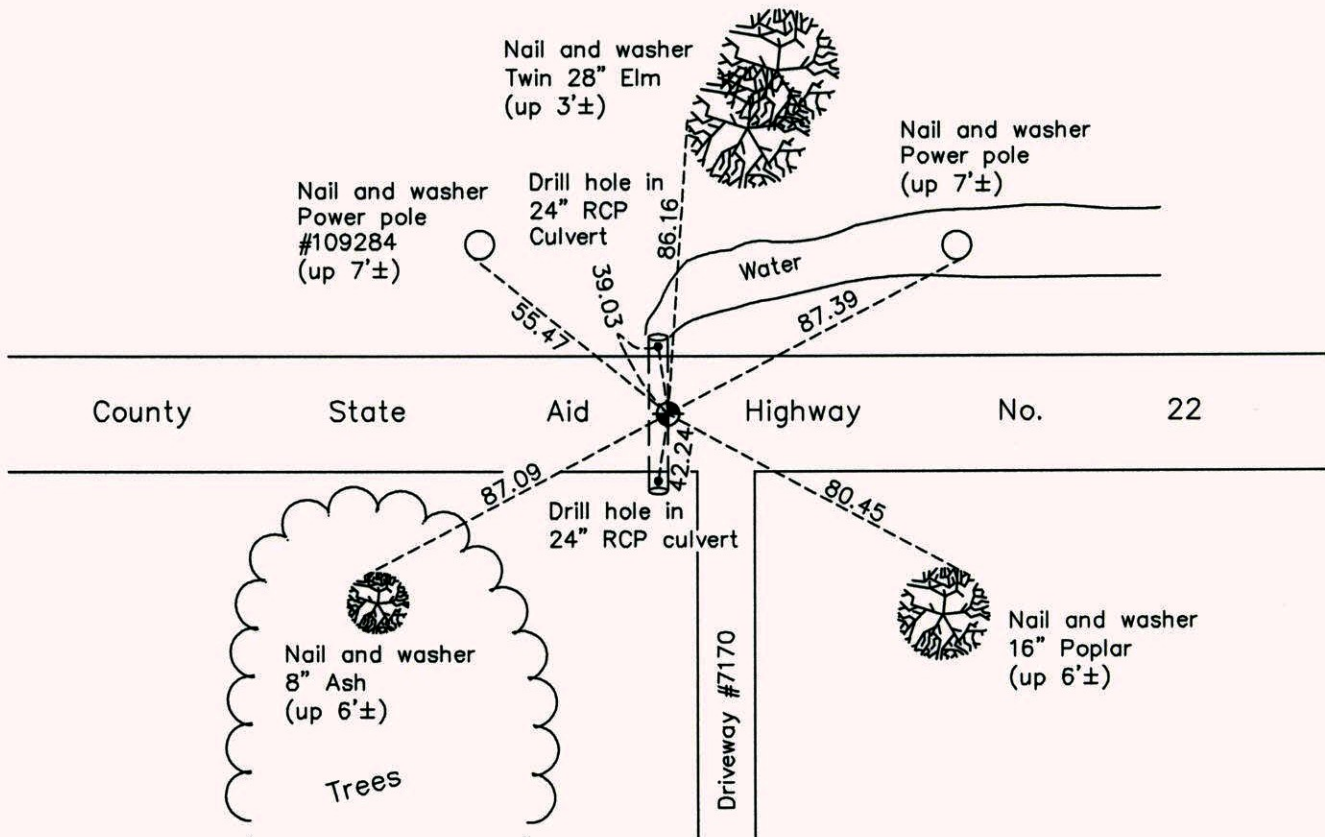
Northwest Corner of Sec. 27 Township 33 Range 25

On the 15th day of June, 1966, the described corner was evidenced by area resurvey

and to perpetuate the location of said corner, at the exact location thereof, a permanent marker was placed consisting of a cast iron monument

AND on the 12th day of August, 2011, said permanent marker was replaced with a slimline cast iron monument set in concrete road surface after construction and the ties were updated

Updated reference ties are as shown below.



N
ANOKA COUNTY SURVEYOR
E
S

Revision Date
8/16/11

N.A.D. 1983 Coordinates
(1996 Adjustment)

County Project Coordinates	
Northing	206774.6768
Easting	452886.4576
Date	9/03/02

I hereby certify that this United States public land survey monument record is correct and complete to the best of my knowledge and belief.

Larry D. Hoium Date 8/16/11

Larry D. Hoium, Anoka County Surveyor
Minnesota License Number 18165

CERTIFICATE OF LOCATION OF GOVERNMENT CORNER

County of Anoka

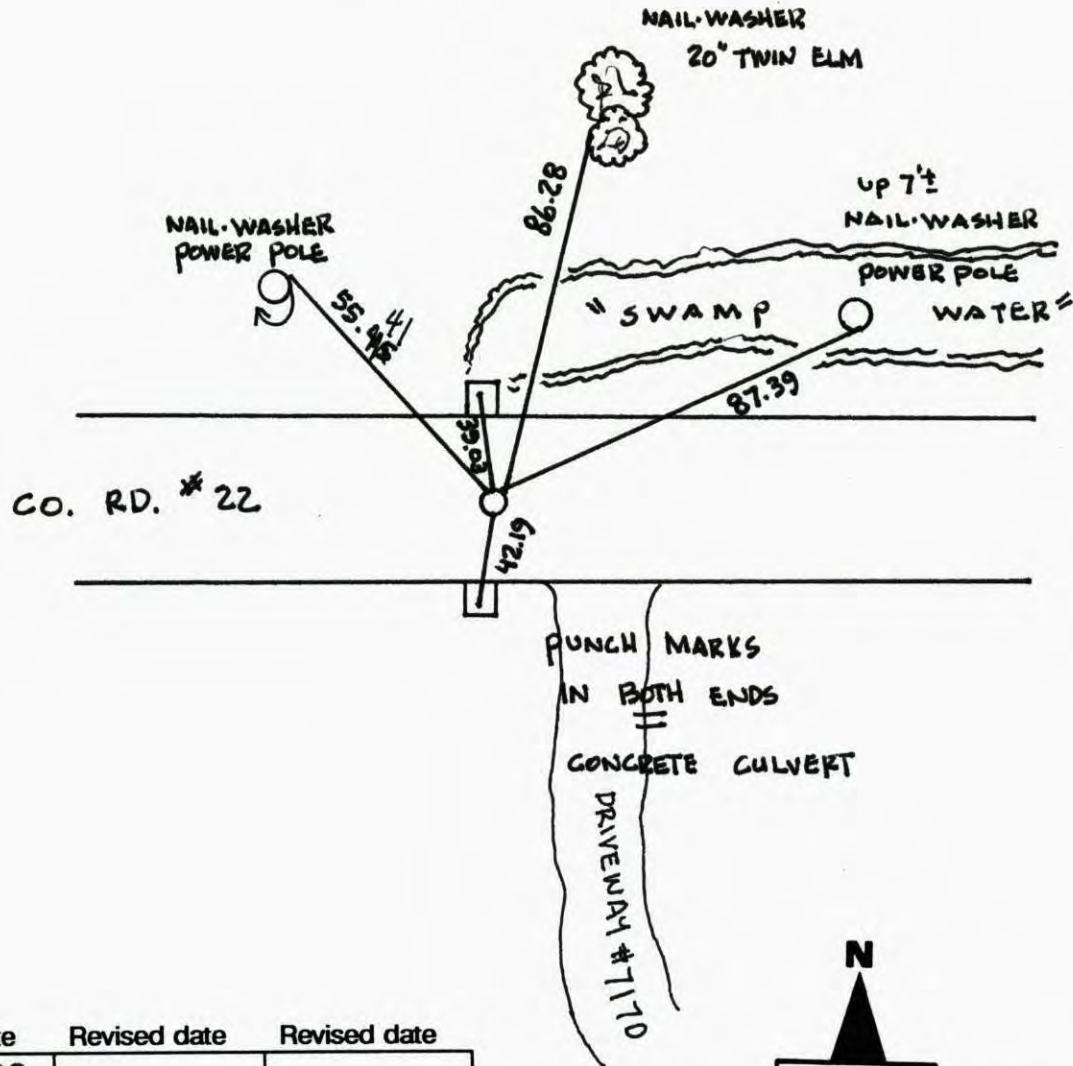
State of Minnesota

NORTH WEST Corner of Sec. 27 Township 33 Range 25

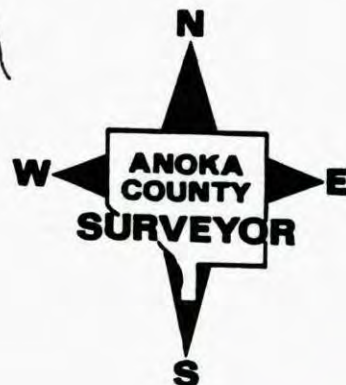
I hereby certify that on the 15TH day of JUNE, 1966, I found the described corner which was evidenced by AREA RESURVEY

and I further certify that to perpetuate the location of said corner, I did, at the exact location thereof, place a permanent marker consisting of CAST IRON MONUMENT

which reference or witness monuments are located in the manner following:

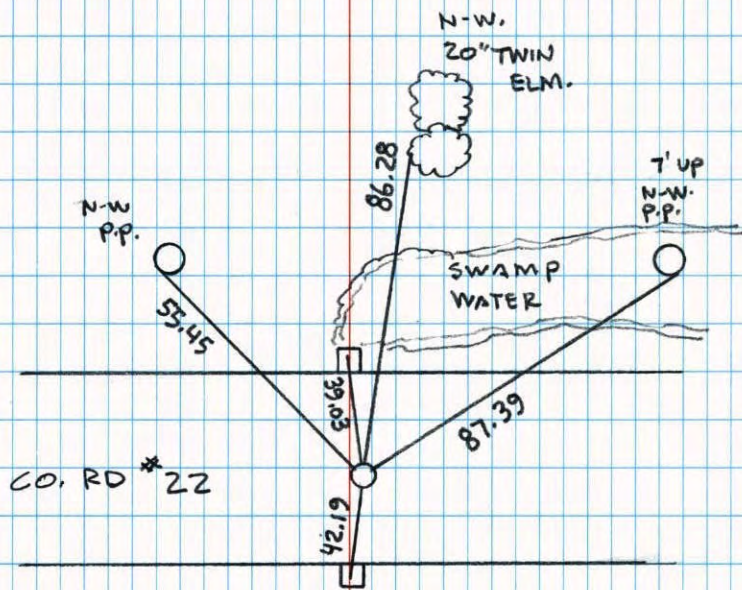


Revised date	Revised date	Revised date
8-30-88		
6-8-94		
9-7-99		
9-30-02		



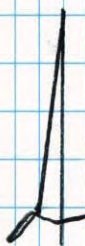
NORTHWEST COR. SEC 27 T 33 R 25

RAISED AND RETIED C.I.M.



NO. 446

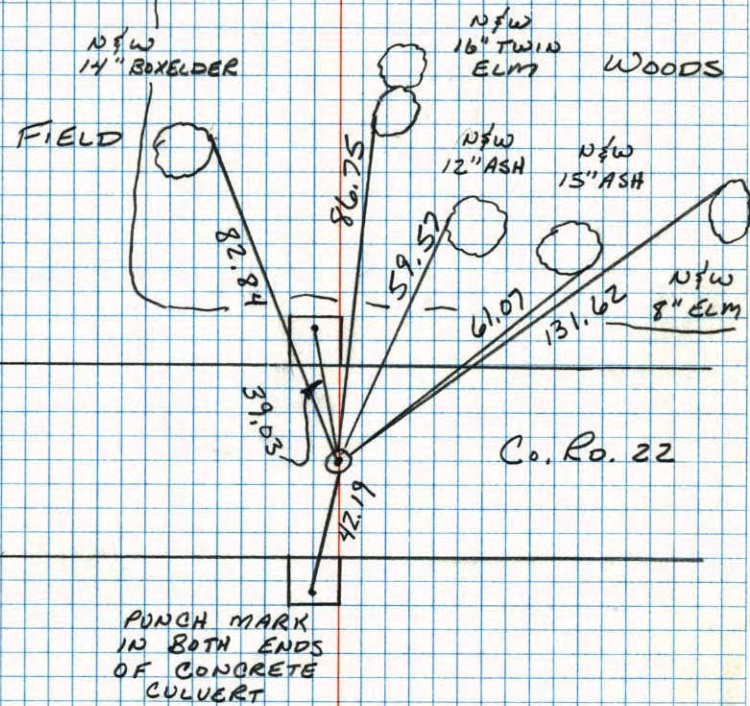
NATIONAL PRINTING


 9-7-99
 J. SIMMER
 T. SCHWAB

PUNCH MARKS IN
BOTH ENDS CONG.
 CULVERT


N.W. CORNER SEC 27 T 33 R 25

RESET AND RETIED CAST IRON MONUMENT



NO. 446

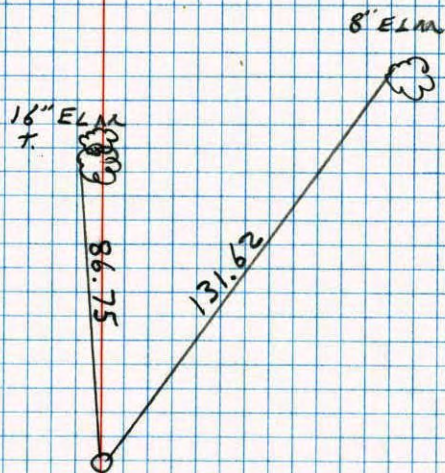
TELETYPE


 8-30-88
 B. QUETZKO
 A. SHROYER
 75° 200' TAPE

NW

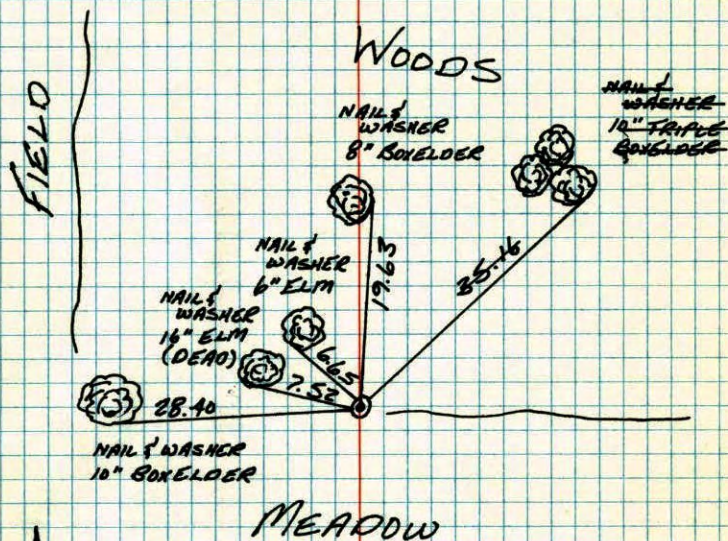
CORNER SECTION 27 T33 R25

RETIED AND REMOVED CAST IRON MON.



H. LARSON
B. GUETZKO
8-20-87

N. W. CORNER SECTION 27-T33-R25

RETIED CAST IRON MONUMENT SET FROM AREA
RESURVEY. CAST IRON FOUND.

17 JUL 79
H. LARSON
B. GUETZKO
D. MAGLAK

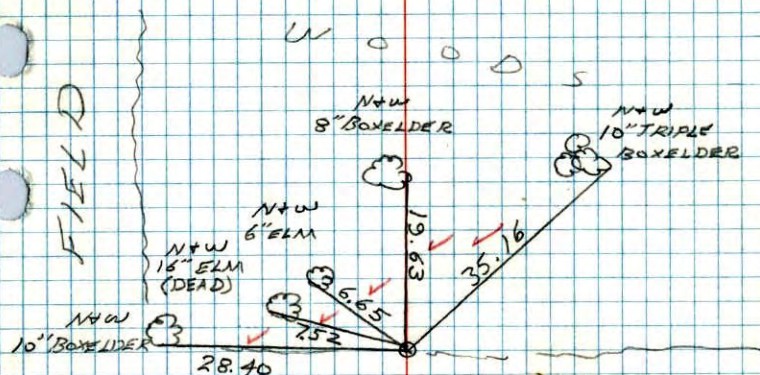
TIECHECK
7-30-82
P. ROSS
P. HORNBY

TEMPERATURE CORRECTED
AND HORIZONTALLY
TAPED MEASUREMENTS

ROLAND W. ANDERSON
COUNTY SURVEYOR
ANOKA COUNTY, MINNESOTA

N.W. COR. SECTION 27 T33 R25

RETIRED CAST IRON MONUMENT SET
FROM AREA RESURVEY. C.I. FLUSH



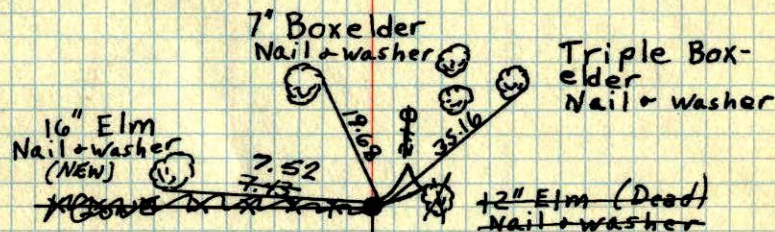
MEADOW

*1 70°
7-17-79
H. LARSON
B. FUETZKO
D. NAGLAK

SWAMP

N.W. Cor. Sec. 27-T33-R25

Set Cast Iron Mon. from area resurvey
Set flush & on fences South & West
up 0.1'



OPEN FIELD

SWAMP

June 15, 1966
M.P. Anderson
D. Potter
D. Powell

Temp 70°
Tape #5

Tie Check
July 22, 1969
D. Powell
R. Olson
B. Olson

Tie Check
July 31, 1973
B. Olson
D. Brien
D. Farmer

TEMPERATURE CORRECTED
AND HORIZONTALLY
TAPED MEASUREMENTS

ROLAND W. ANDERSON
COUNTY SURVEYOR
ANOKA COUNTY, MINNESOTA

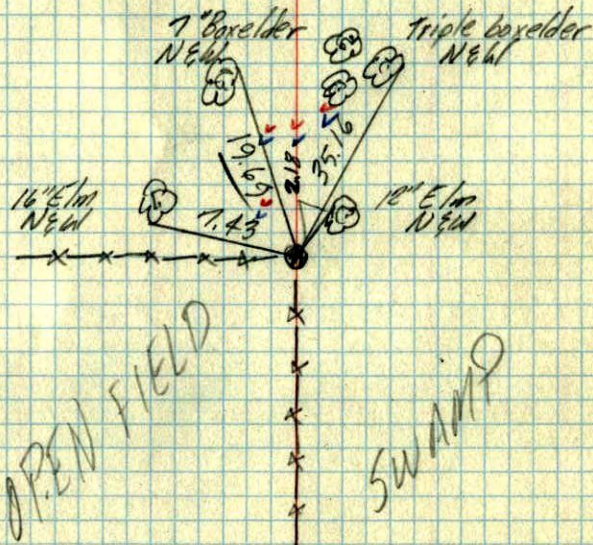
SEE NEW
TIES
H.L.

TIE CHECK
7-27-76
G. HOAMS
S. BRIEN
J. STEPHENS

N.W. Cor. Sec. 27, T 33-R 25

set C.I. Mon. from area resurvey

set flush & on fences South & West



June 15, 1966
R. D. Anderson
D. Patten
O. Powell
Temp. 70°
Tape 25

TEMPERATURE CORRECTED
AND HORIZONTALLY
TAPED MEASUREMENTS

ROLAND W. ANDERSON
COUNTY SURVEYOR
ANOKA COUNTY, MINNESOTA