

CERTIFICATE OF LOCATION OF GOVERNMENT CORNER

County of Anoka

State of Minnesota

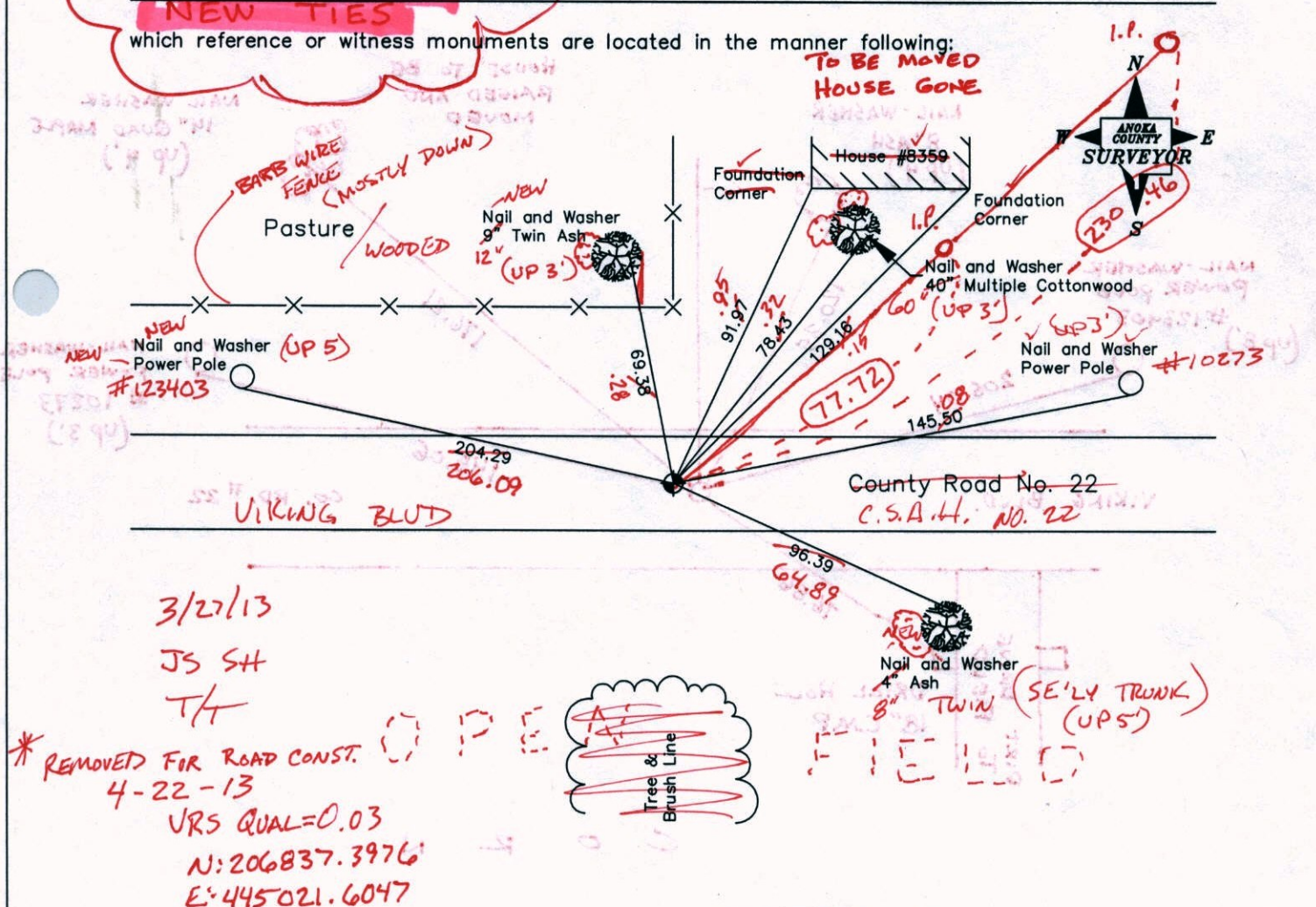
North 1/4 Corner of Sec. 29, Township 33, Range 25

I hereby certify that on the 8th day of July, 1969, I found the described corner which was evidenced by a P.K. nail

and I further certify that to perpetuate the location of said corner, I did, at the exact location thereof, place a permanent marker consisting of a cast iron monument ~~FLUSH~~

SEE BACK FOR NEW TIES

which reference or witness monuments are located in the manner following:



3/27/13
 JS SH
 T/H
 * REMOVED FIR ROAD CONST.
 4-22-13
 VRS QUAL=0.03
 N: 206837.3976
 E: 445021.6047

Revised date Revised date

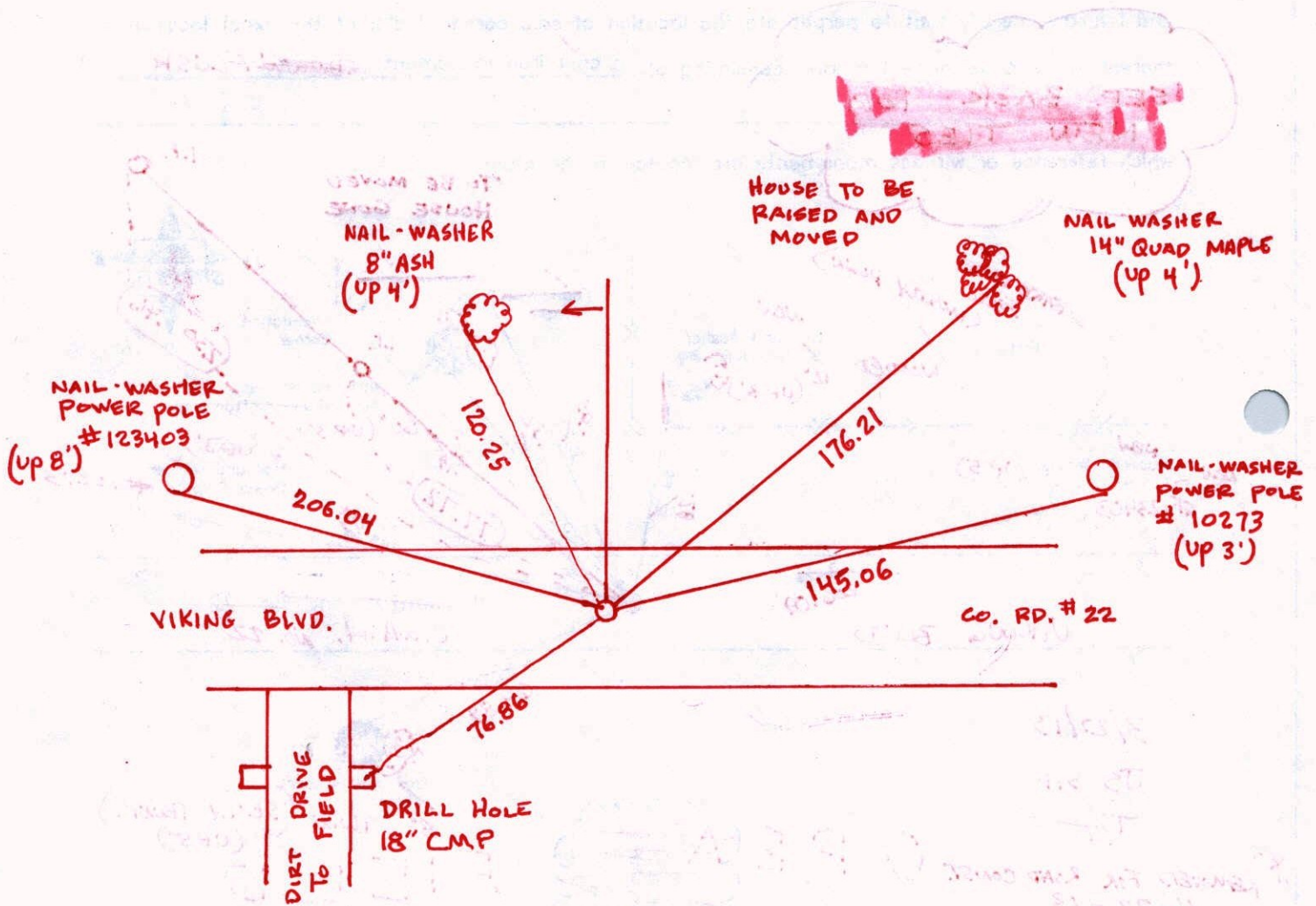
5-3-74	8-24-88
7-27-76	5-22-92
7-13-79	6-8-94
7-30-82	9-30-02
6-26-85	

N.A.D. 1983 Co-ordinates
 (1996 Adjustment)

County Project Co-ordinates		State Plane Co-ordinates	
Northing	206837.3974	Y	
Easting	445021.6404	X	

Date 9-25-02

10-3-13 JS. S.H. S.S.
RETIED NEW SLIM C.I.M IN CENTER SEAM
CONCRETE ROAD.



C O R N

F I E L D

CERTIFICATE OF LOCATION OF GOVERNMENT CORNER

County of Anoka

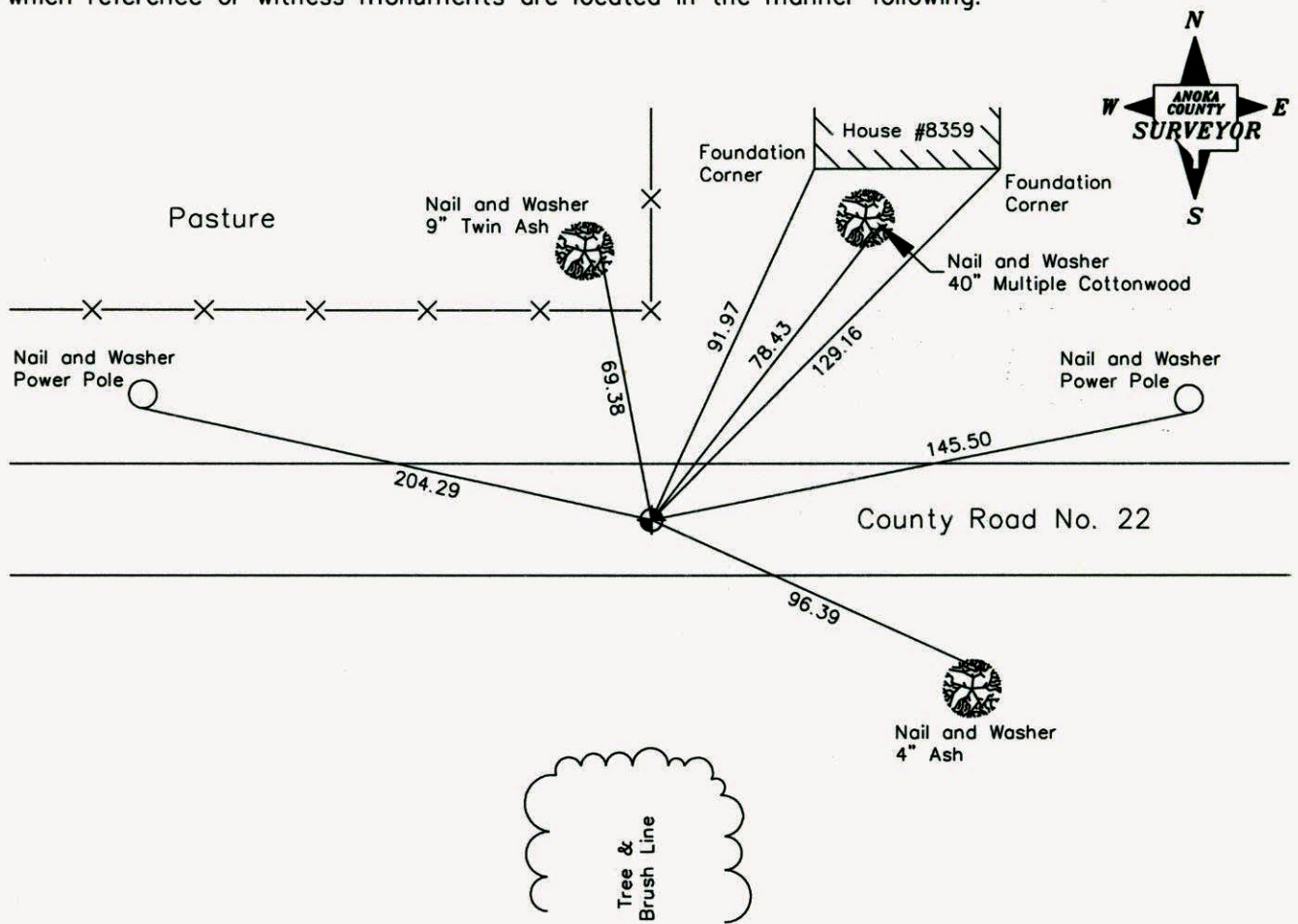
State of Minnesota

North 1/4 Corner of Sec. 29, Township 33, Range 25

I hereby certify that on the 8th day of July, 1969, I found the described corner which was evidenced by a P.K. nail

and I further certify that to perpetuate the location of said corner, I did, at the exact location thereof, place a permanent marker consisting of a cast iron monument

which reference or witness monuments are located in the manner following:



Revised date Revised date

5-3-74	8-24-88
7-27-76	5-22-92
7-13-79	6-8-94
7-30-82	9-30-02
6-26-85	

N.A.D. 1983 Co-ordinates
(1996 Adjustment)

County Project Co-ordinates	State Plane Co-ordinates
Northing <u>206837.3974</u>	Y _____
Easting <u>445021.6404</u>	X _____

Date 9-25-02

CERTIFICATE OF LOCATION OF GOVERNMENT CORNER

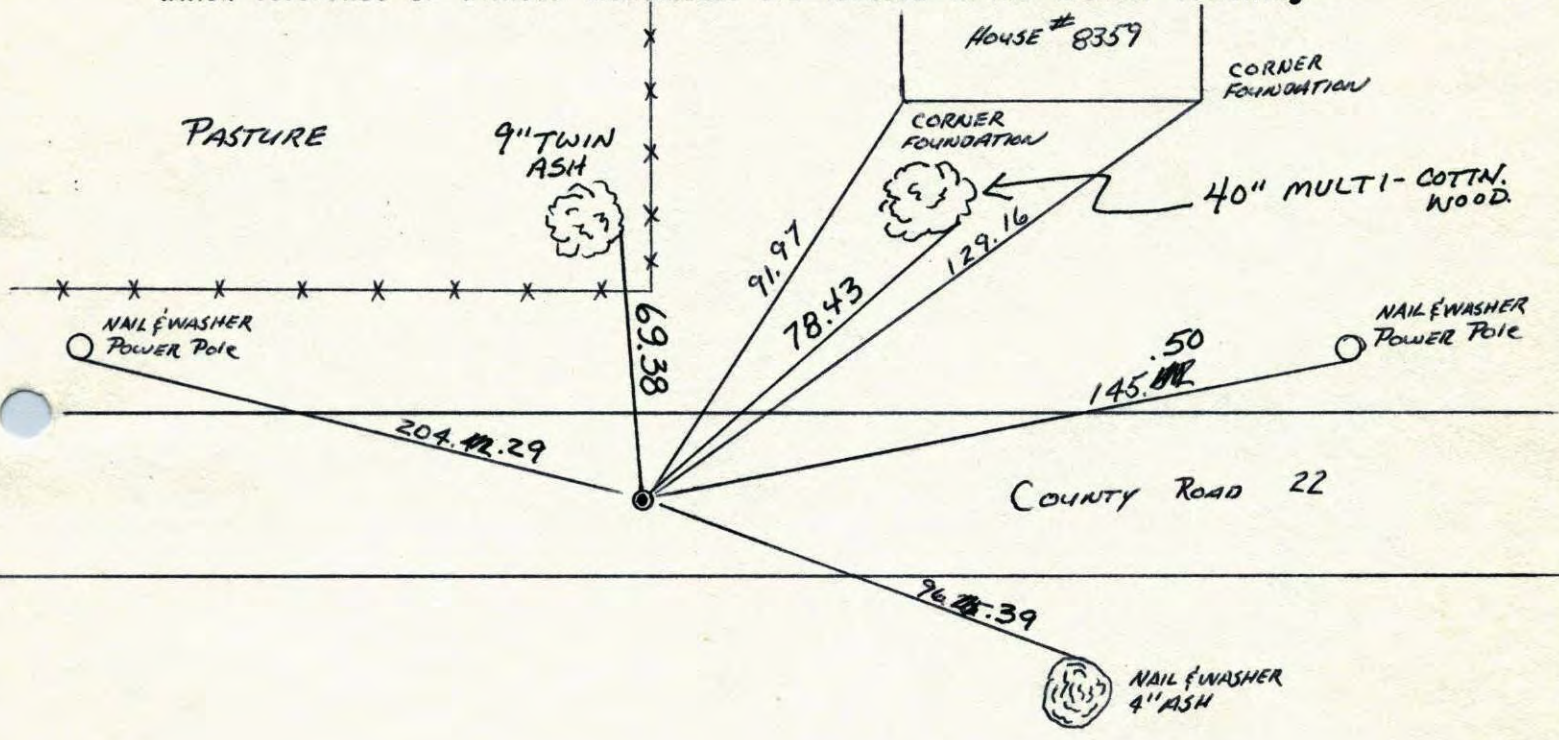
County of Anoka State of Minnesota

NORTH 1/4 Corner of Sec. 29 Township 33 Range 25

I hereby certify that on the 8TH day of July, 1968, I found the described corner which was evidenced by P.K. NAIL

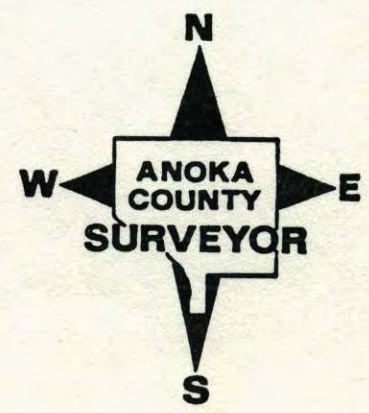
and I further certify that to perpetuate the location of said corner, I did, at the exact location thereof, place a permanent marker consisting of CAST IRON MONUMENT

which reference or witness monuments are located in the manner following:



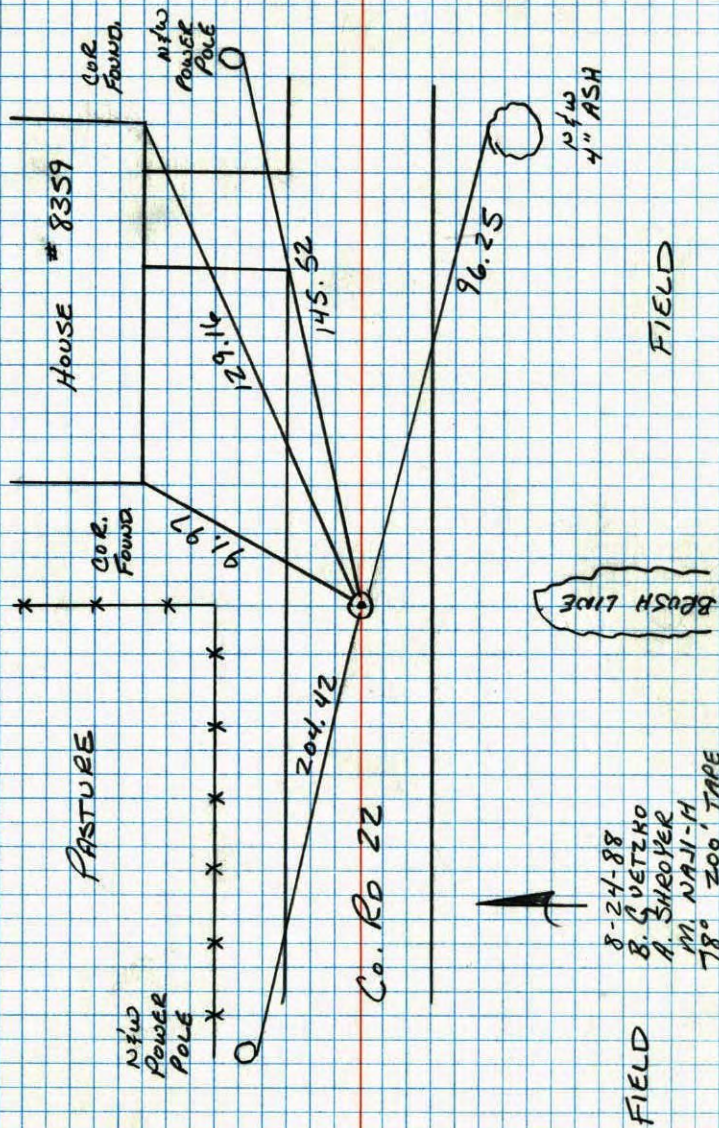
TREE BRUSH LINE

Revised date	Revised date	Revised date
5-3-74	6-8-94	
7-27-76	9-30-02	
7-13-79		
7-30-82		
6-26-85		
8-24-88		
RAISED 5-22-92 HL		



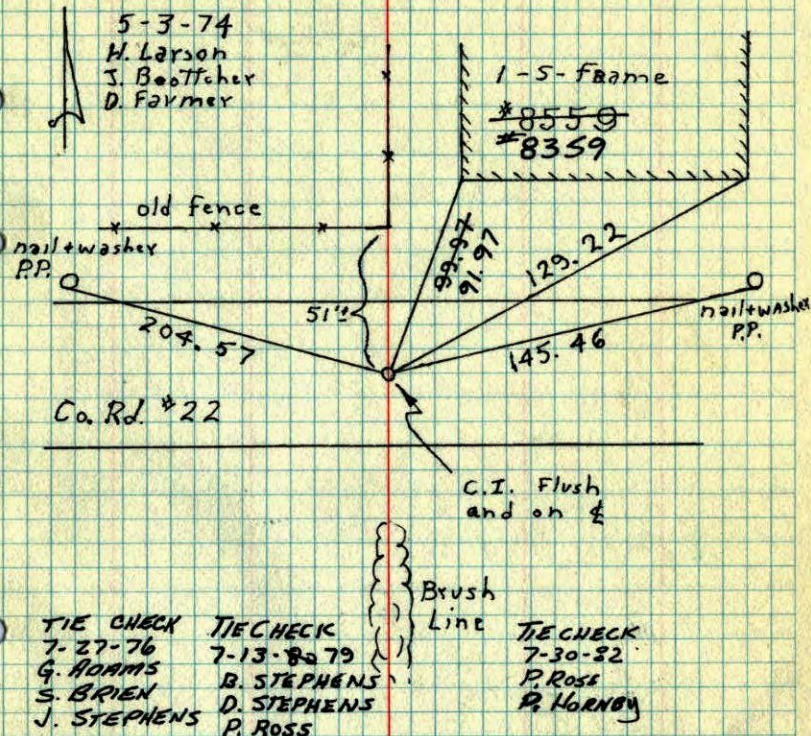
NORTH 1/4 CORNER SEC 29 T33 R25

RETIRED CAST IRON MONUMENT



N 1/4 Sec. 29 T33 R25

Set cast iron monument in place of P.K. PK's 2.00' North and east.



ROLAND W. ANDERSON
COUNTY SURVEYOR
ANOKA COUNTY, MINNESOTA

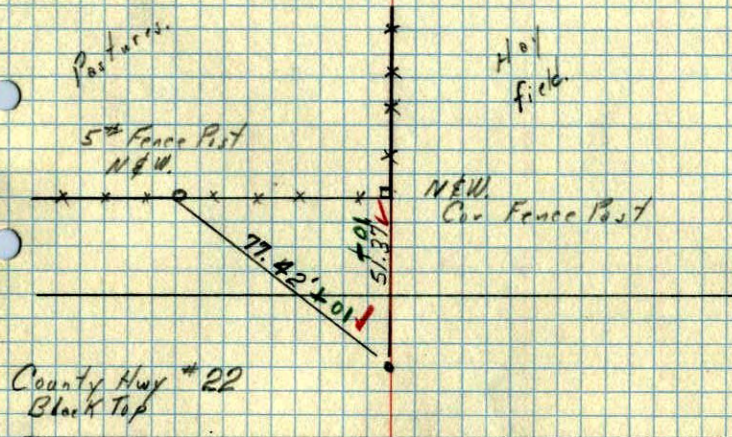
TEMPERATURE CORRECTED
AND HORIZONTALLY
TAPED MEASUREMENTS

Possible

N¹/₄ Cor. Sec. 29, T. 33, R. 25

Found P.K. on $\frac{1}{2}$ of Hwy.

Set P.K. 2' N & E



Corn Field

Corn Field

Washed Ridge road

7-8-69
Temp 65° ✓
Tape # 5 ✓

R.A. Olson
B.N. Olson