

CERTIFICATE OF LOCATION OF GOVERNMENT CORNER

County of Anoka

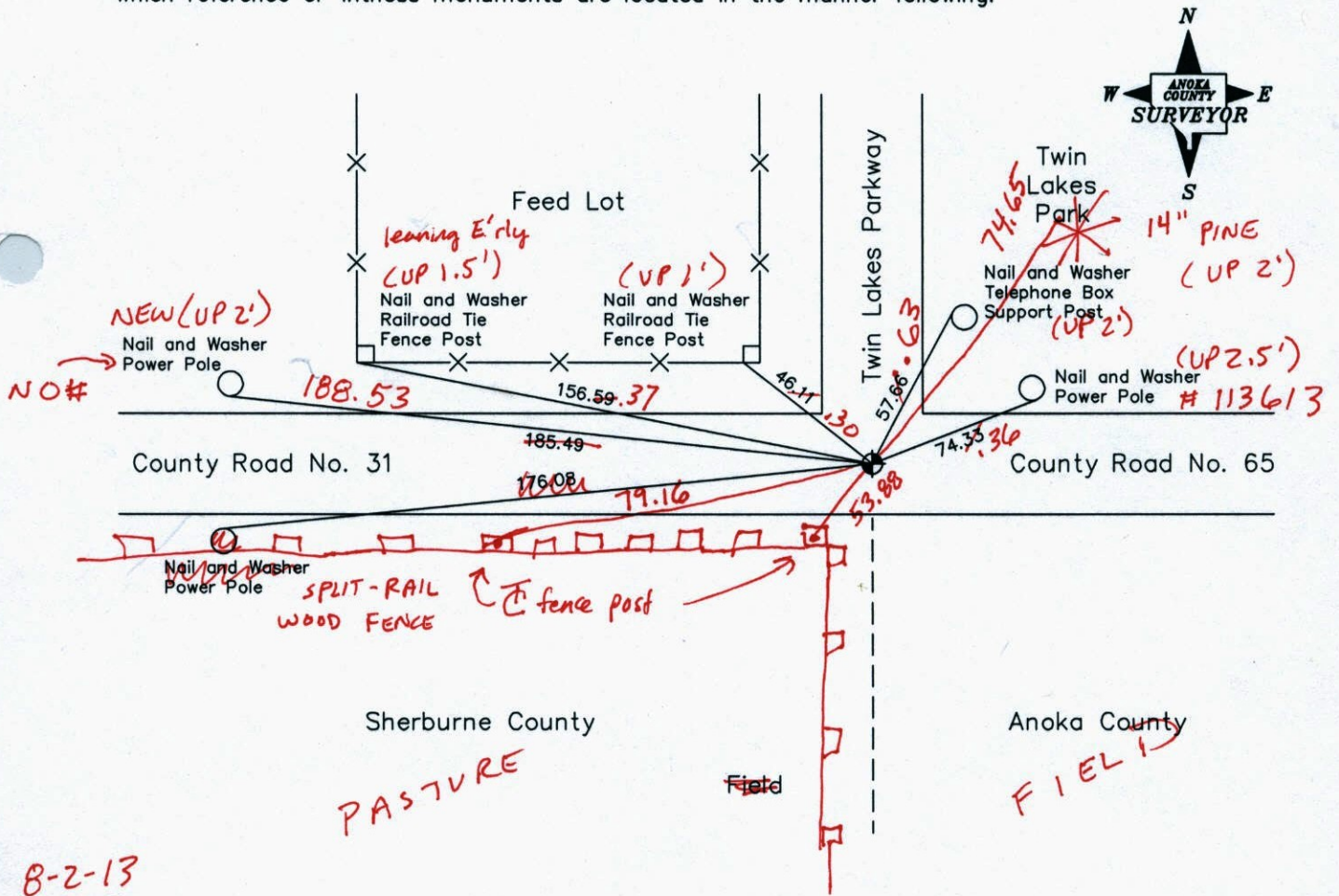
State of Minnesota

Southwest Corner of Sec. 19, Township 33, Range 25

I hereby certify that on the 20th day of October, 1958, I found the described corner which was evidenced by a granite monument set by Casewell

and I further certify that to perpetuate the location of said corner, I did, at the exact location thereof, place a permanent marker consisting of a cast iron monument ✓ (1' ± S. OF E)

which reference or witness monuments are located in the manner following:



8-2-13
BK-55
TH

Revised date

6-26-85
8-24-88
6-8-94
7-14-00
10-1-02

N.A.D. 1983 Co-ordinates
(1996 Adjustment)

County Project Co-ordinates		State Plane Co-ordinates	
Northing	206953.4163	Y	_____
Easting	437242.9419	X	_____

Date 9-3-02

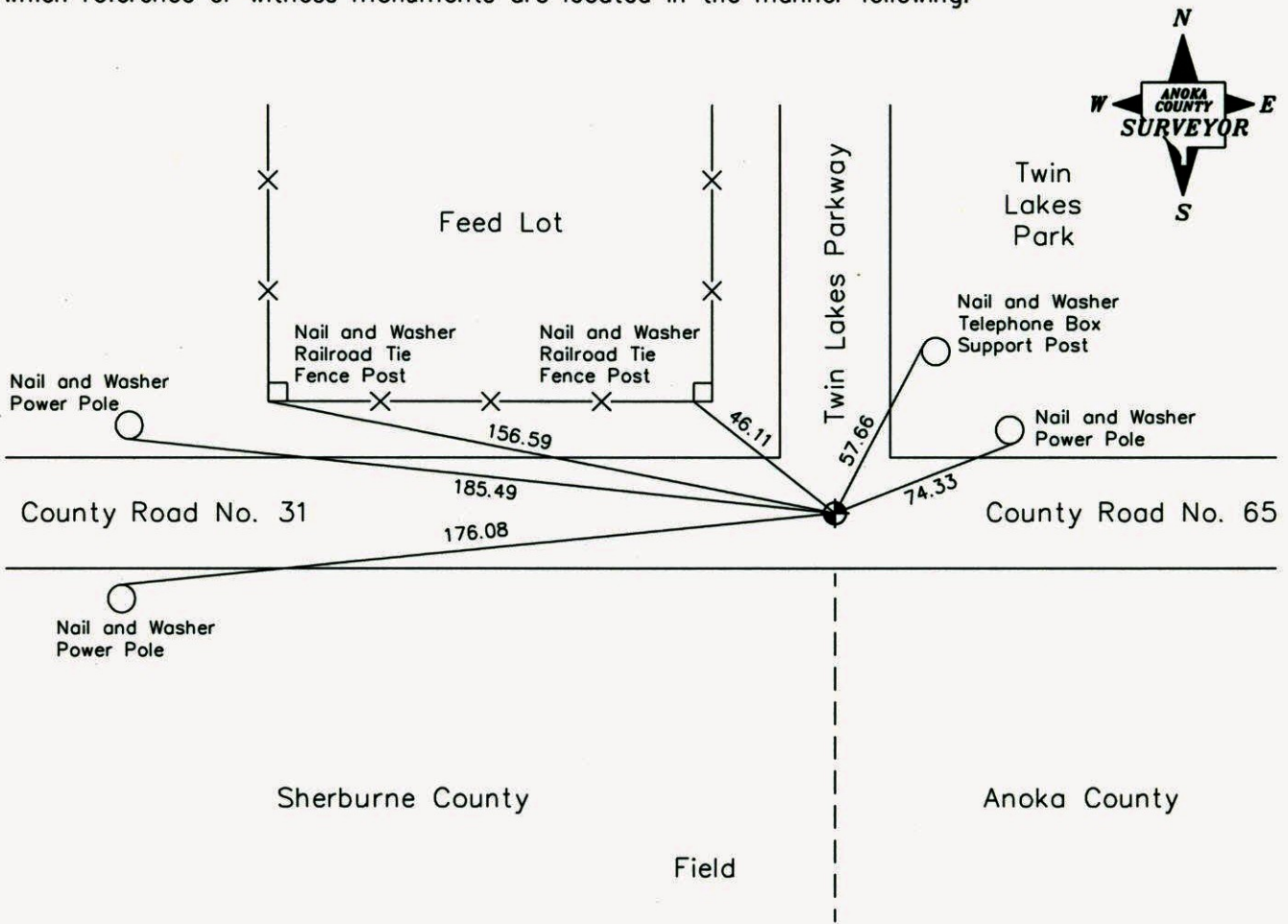
CERTIFICATE OF LOCATION OF GOVERNMENT CORNER
County of Anoka State of Minnesota

Southwest Corner of Sec. 19, Township 33, Range 25

I hereby certify that on the 20th day of October, 1958, I found the described corner which was evidenced by a granite monument set by Casewell

and I further certify that to perpetuate the location of said corner, I did, at the exact location thereof, place a permanent marker consisting of a cast iron monument

which reference or witness monuments are located in the manner following:



Revised date

6-26-85
8-24-88
6-8-94
7-14-00
10-1-02

N.A.D. 1983 Co-ordinates
(1996 Adjustment)

County Project Co-ordinates		State Plane Co-ordinates	
Northing	<u>206953.4163</u>	Y	<u> </u>
Easting	<u>437242.9419</u>	X	<u> </u>

Date 9-3-02

CERTIFICATE OF LOCATION OF GOVERNMENT CORNER

County of Anoka

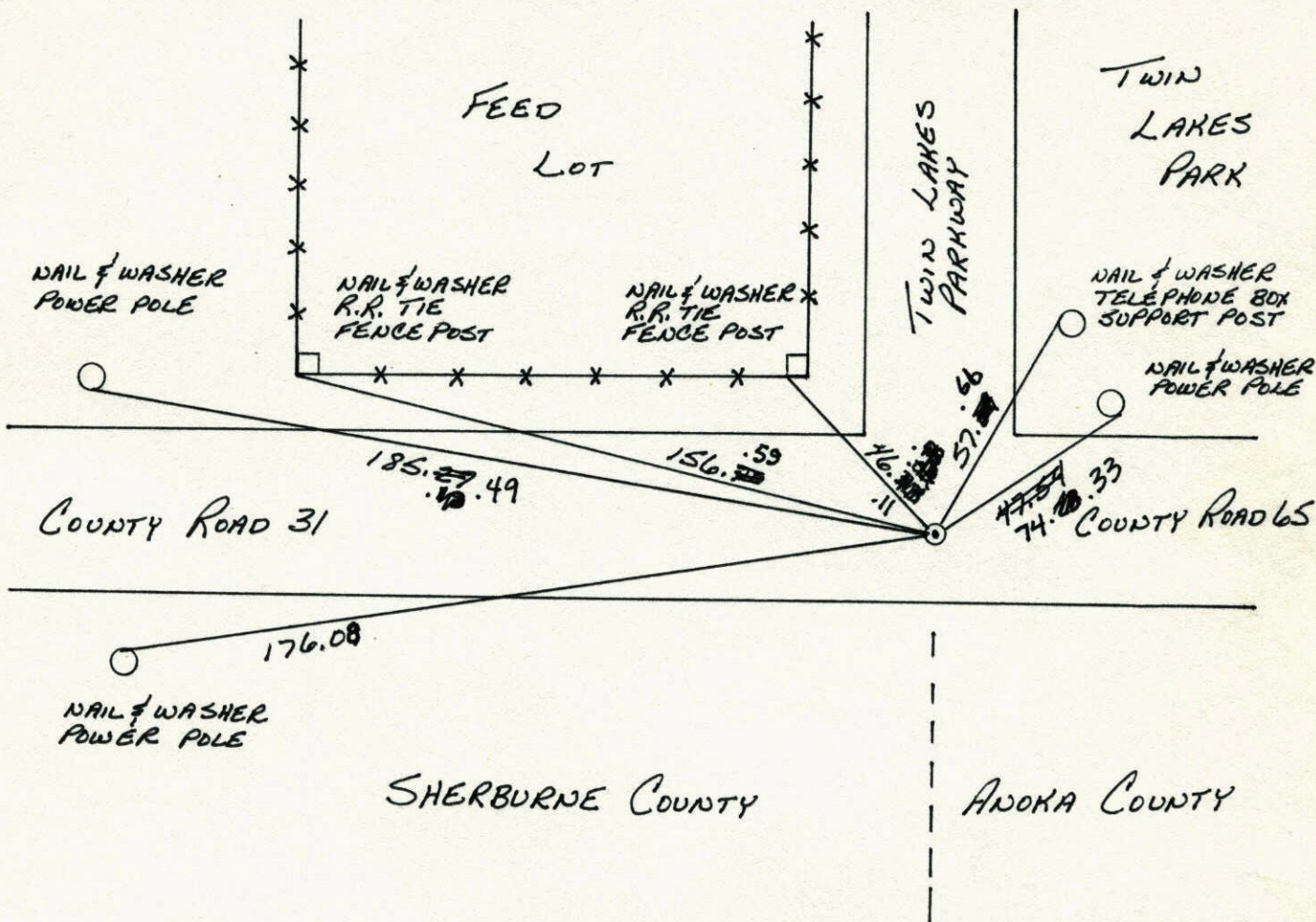
State of Minnesota

SOUTHWEST Corner of Sec. 19 Township 33 Range 25

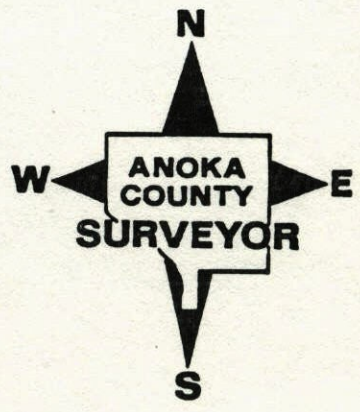
I hereby certify that on the 20 day of OCTOBER, 1958, I found the described corner which was evidenced by GRANITE MONUMENT SET BY CASEWELL

and I further certify that to perpetuate the location of said corner, I did, at the exact location thereof, place a permanent marker consisting of CAST IRON MONUMENT

which reference or witness monuments are located in the manner following:



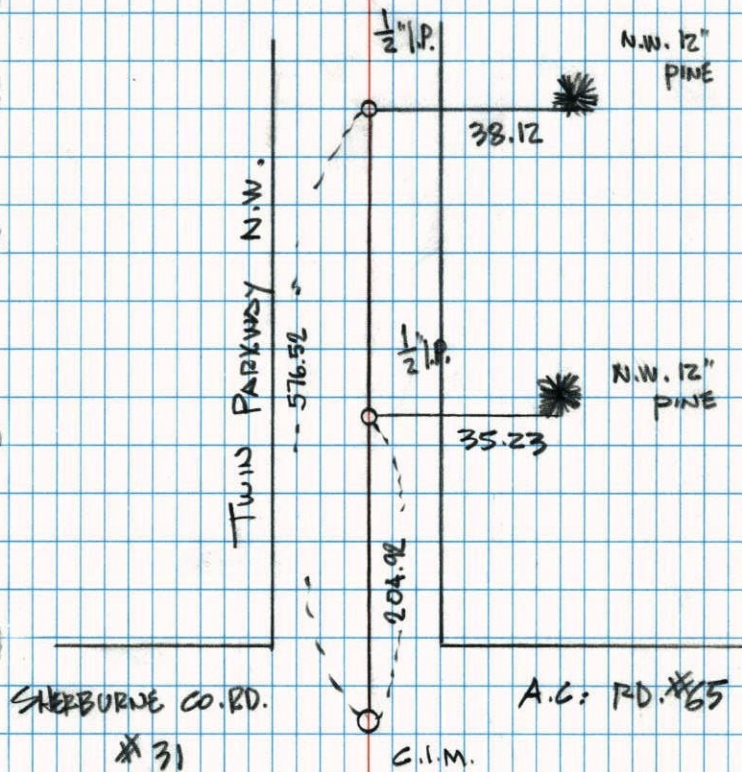
Revised date	Revised date	Revised date
6-26-85		
8-24-88		
6-8-94		
7-14-00		
10-1-02		



RESET

20

SOUTHWEST COR. SEC 19 T33R25
 TRAVEL & SWING TIES & REMOVAL
 OF C.I.M. FOR CONST.

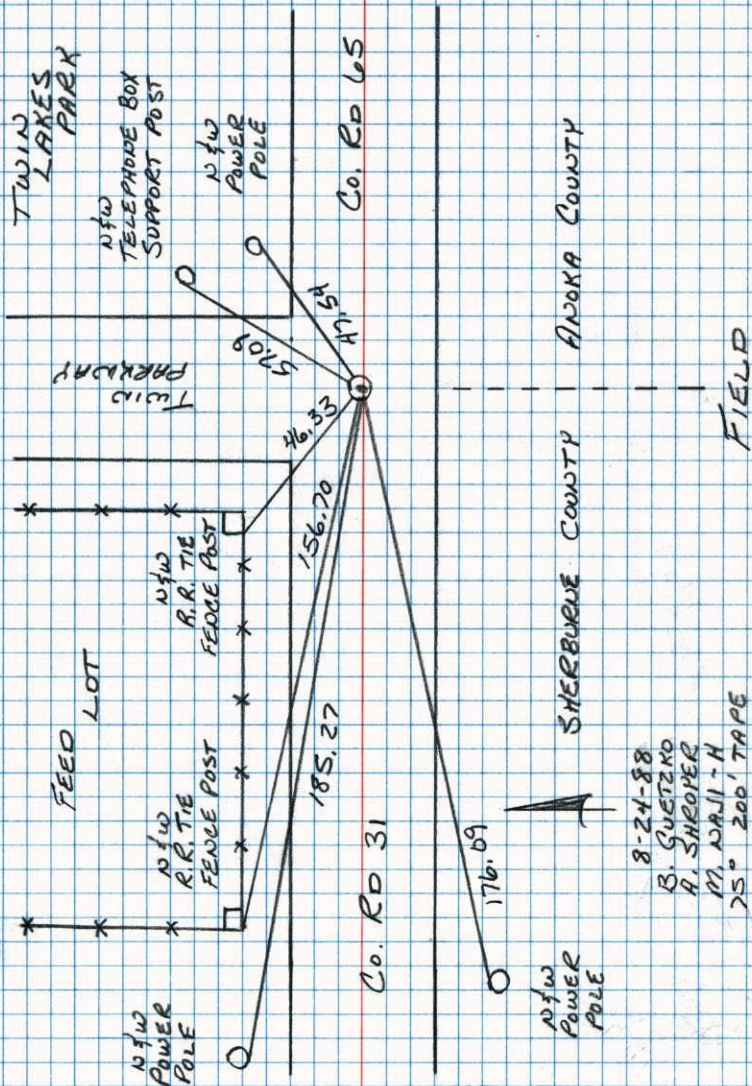


5-21-00
 J. SIMMER
 J. SCHWAB

NORTH

NATIONAL PRINTING NO. 446

S.W. CORNER SEC. 19 T33 R25
 RETIRED CAST IRON MONUMENT

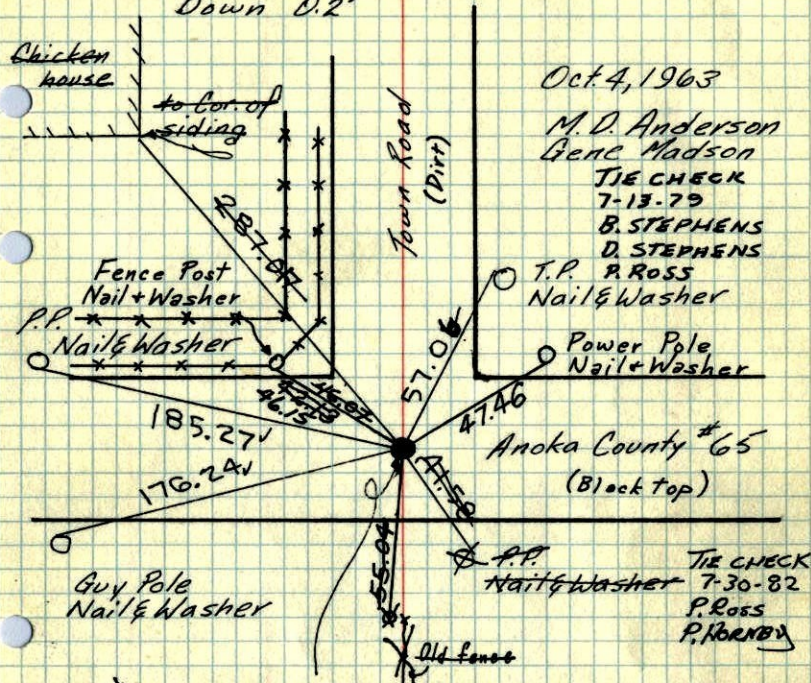


8-24-88
 B. GUETZKO
 A. SHROPER
 M. ADAMI - H
 25' 200' TAPE

NATIONAL PRINTING NO. 448

S.W. Cor. Sec. 19-33-25

found Cast Iron Monument
fits Old ties to Granite Monument
Down 0.2'



Cast Iron Monument
has SECTION CORNER
and a registration No 5333
written on it

Tie Check
July 24, 1973
B. Olson
D. Brien
D. Farmer

TIE CHECK
7-28-76
G. ROBERTS
S. BRIEN
J. STEPHENS

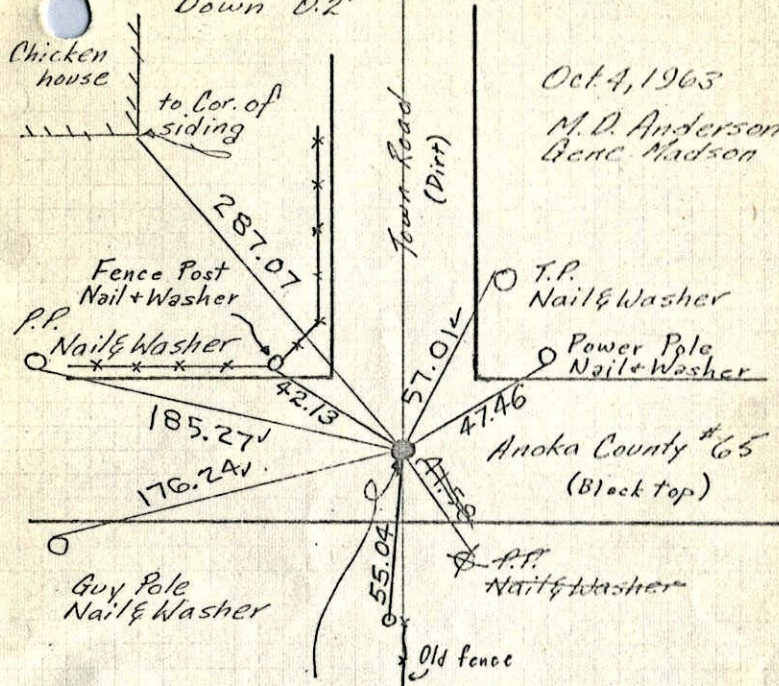
Set Cast Iron
Monument flush
in place of
broken Cast Iron.
PK's 2.00' North + West.
July 28, 1969
D. Powell
R. Olson
B. Olson

TEMPERATURE CORRECTED
AND HORIZONTALLY
TAPED MEASUREMENTS

ROLAND W. ANDERSON
COUNTY SURVEYOR
ANOKA COUNTY, MINNESOTA

S.W. Cor. Sec. 19-33-25

found Cast Iron Monument
fits Old ties to Granite Monument
Down 0.2'



Cast Iron Monument
has SECTION CORNER
and a registration No 5333
written on it

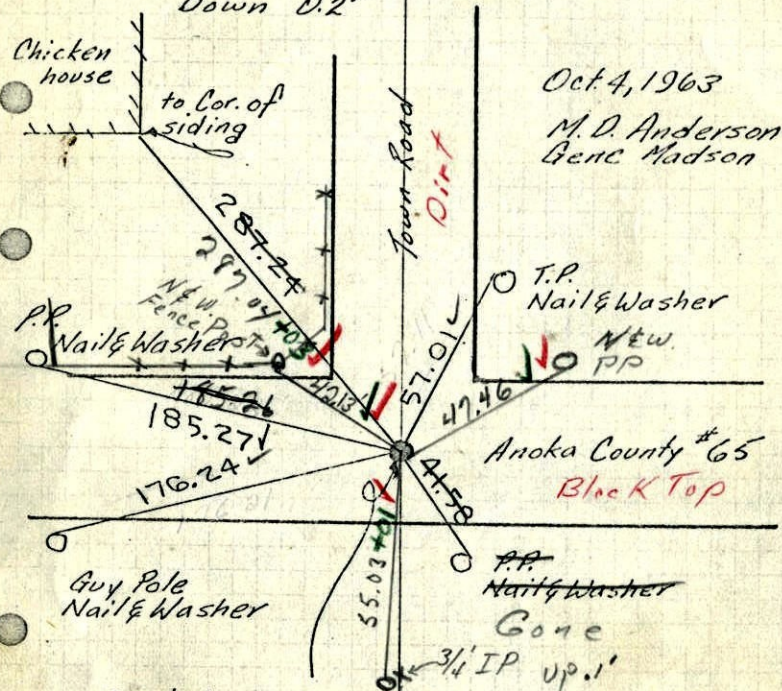
Set C.I. Mon. flush in place of
broken C.I.,
PK's 2.00' N+W.
7/28/69
DP

TEMPERATURE CORRECTED
AND HORIZONTALLY
TAPED MEASUREMENTS

ROLAND W. ANDERSON
COUNTY SURVEYOR
ANOKA COUNTY, MINNESOTA

S.W. Cor. Sec. 19-33-25

found Cast Iron Monument
fits Old ties to Granite Monument
Down 0.2'



Cast Iron Monument
has SECTION CORNER
and a registration NO 5333
written on it

7-7-69

Temp 70

Tape # 5

R.A. Olson

B.N. Olson

TEMPERATURE CORRECTED
AND HORIZONTALLY
TAPED MEASUREMENTS

Can Found 3/4" IP
Not fitting Ties
So Set Spike to ties
& PK 2" N&W.

ROLAND W. ANDERSON
COUNTY SURVEYOR
ANOKA COUNTY, MINNESOTA

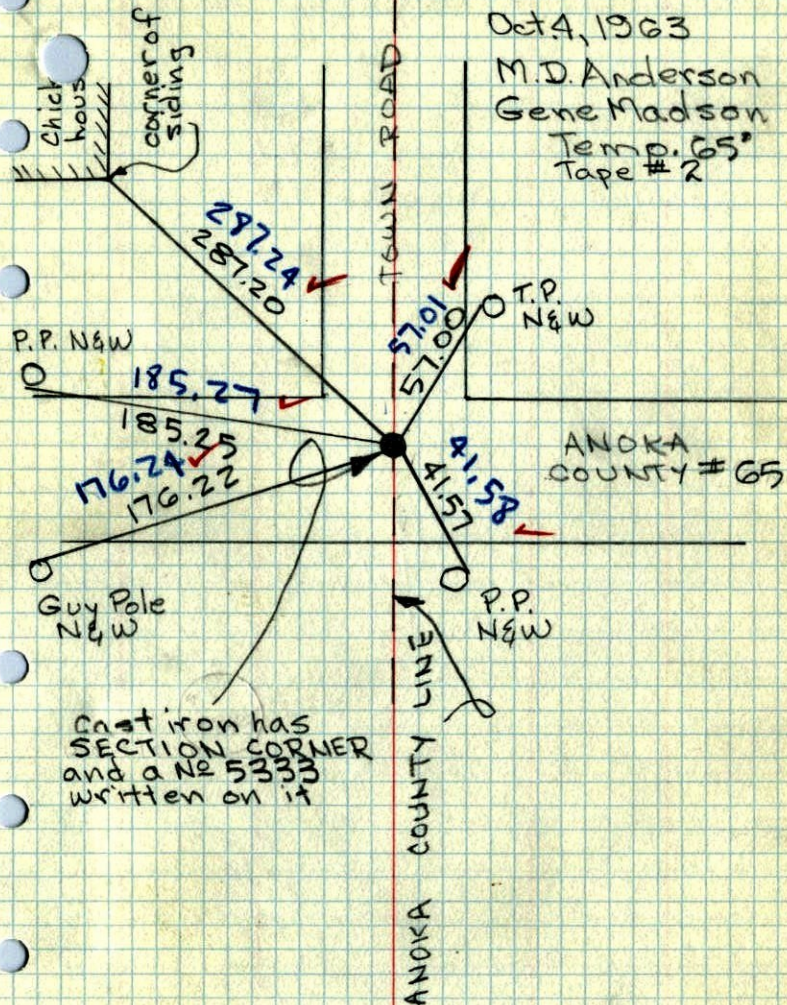
CI To be Set

S.W. Cor. Sec. 19-33-25

found Cast iron monument down 0.2'
fits old ties to Granite

Oct 4, 1963

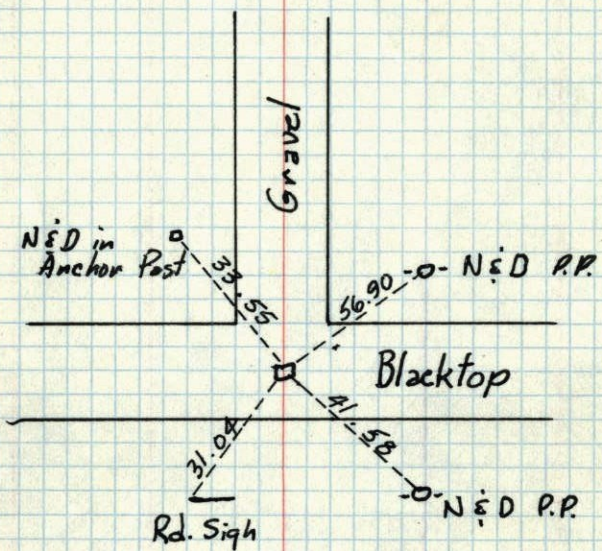
M.D. Anderson
Gene Madson
Temp. 65°
Tape # 2



Cast iron has
SECTION CORNER
and a No 5333
written on it

157
SW Cor. Sec. 19, T33, R25

6" sq. Granite Mon.
5" Down



Retied
Oct. 4, 1963
M.D.A.

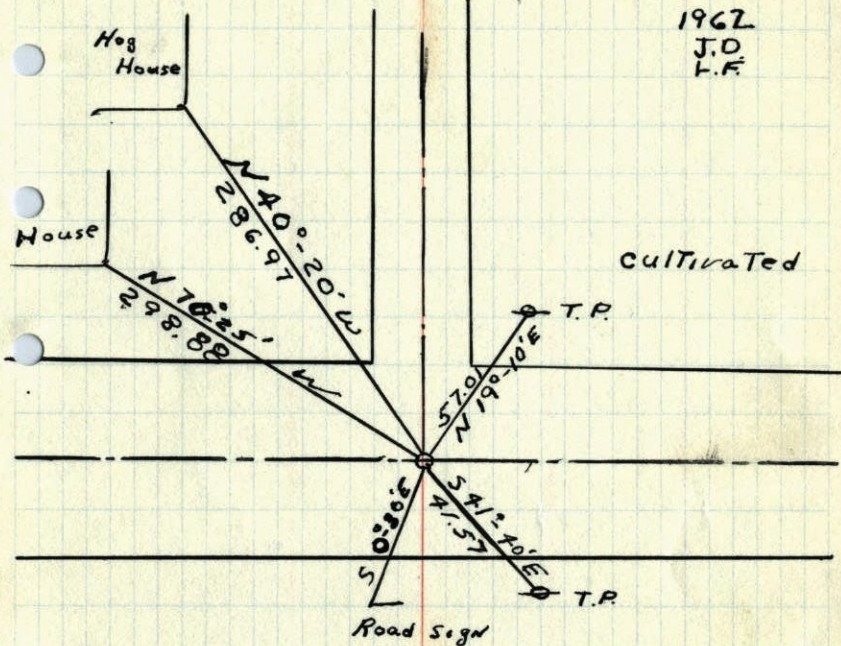
Caswell
10/20/58

SW 19

~~NW 33~~ T33, 25

N.E. cor. sec ~~25~~, T33, R26

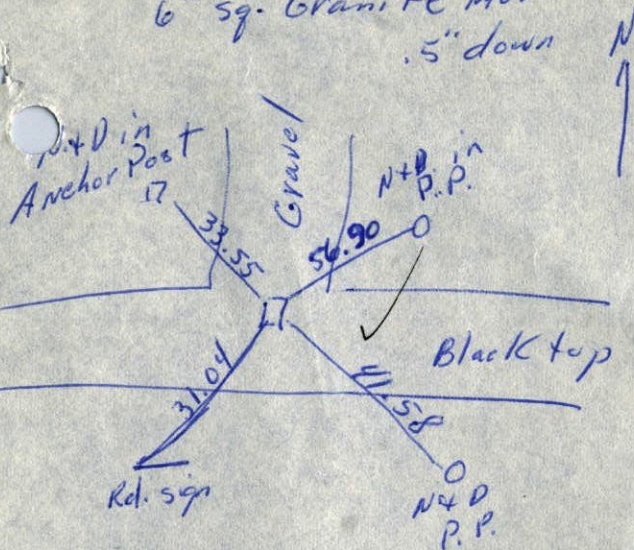
1962
J.D.
L.F.



Have this
tic p 917
Burns Book

SW ~~SE~~ Cor. Sec. 19 T33R25

6" sq. Granite mon.
.5" down



10/20/58