

# CERTIFICATE OF LOCATION OF GOVERNMENT CORNER

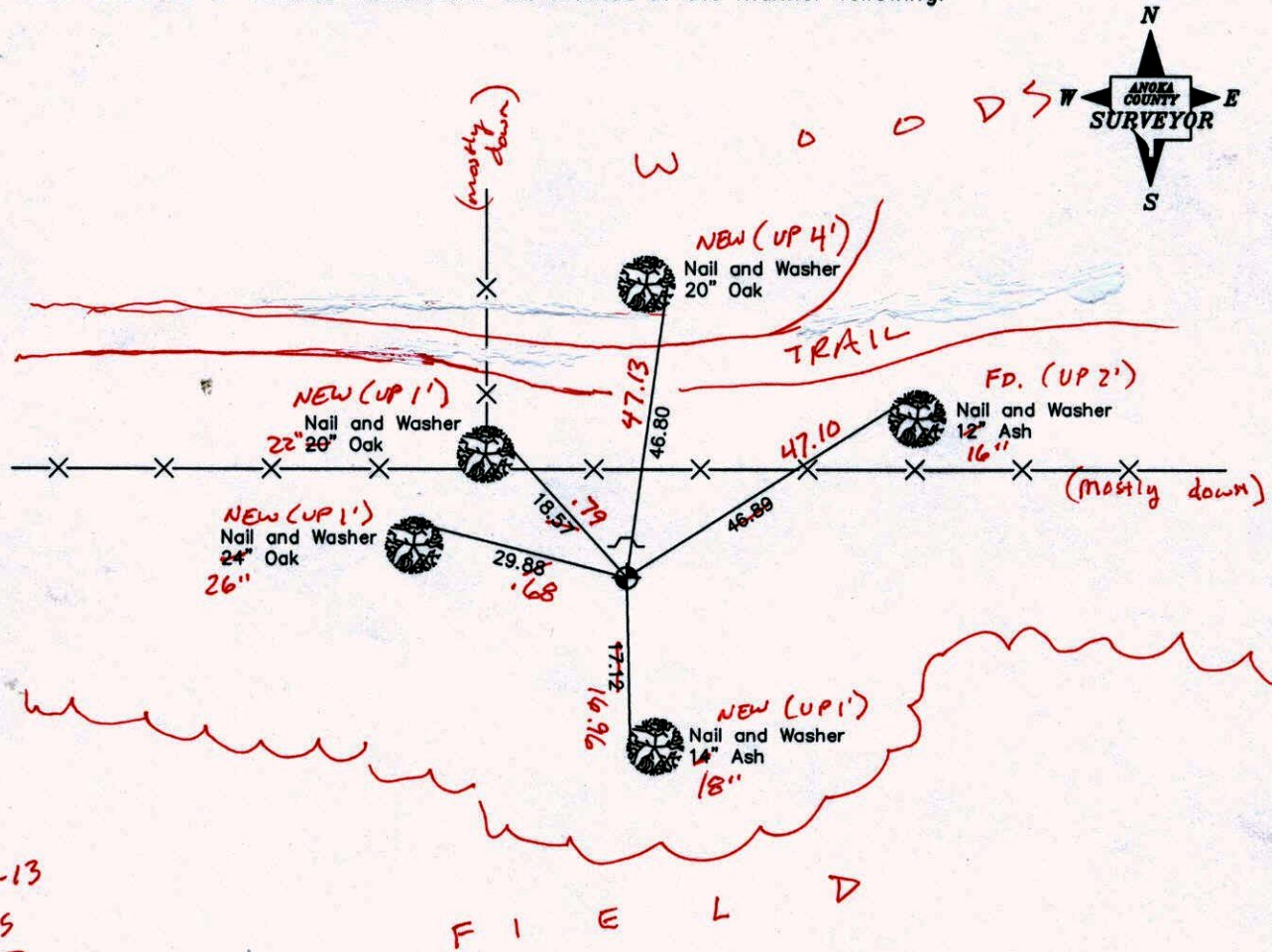
County of Anoka                      State of Minnesota

East 1/4 Corner of Sec. 30, Township 33, Range 25

I hereby certify that on the 15th day of October, 1963, I found the described corner which was evidenced by a one inch axle shaft

and I further certify that to perpetuate the location of said corner, I did, at the exact location thereof, place a permanent marker consisting of a cast iron monument with a sign and post on the north side (MON. UP 0.2' ±)

which reference or witness monuments are located in the manner following:



10-29-13  
BK-55  
TAPED

Revised date    Revised date

8-25-65	8-10-82
7-10-69	7-12-85
8-6-73	6-12-89
7-28-76	6-8-94
7-23-79	

N.A.D. 1983 Co-ordinates  
(1996 Adjustment)

County Project Co-ordinates		State Plane Co-ordinates	
Northing	<u>204258.0629</u>	Y	<u>                    </u>
Easting	<u>442449.2992</u>	X	<u>                    </u>

Date 2-18-03

# CERTIFICATE OF LOCATION OF GOVERNMENT CORNER

County of Anoka

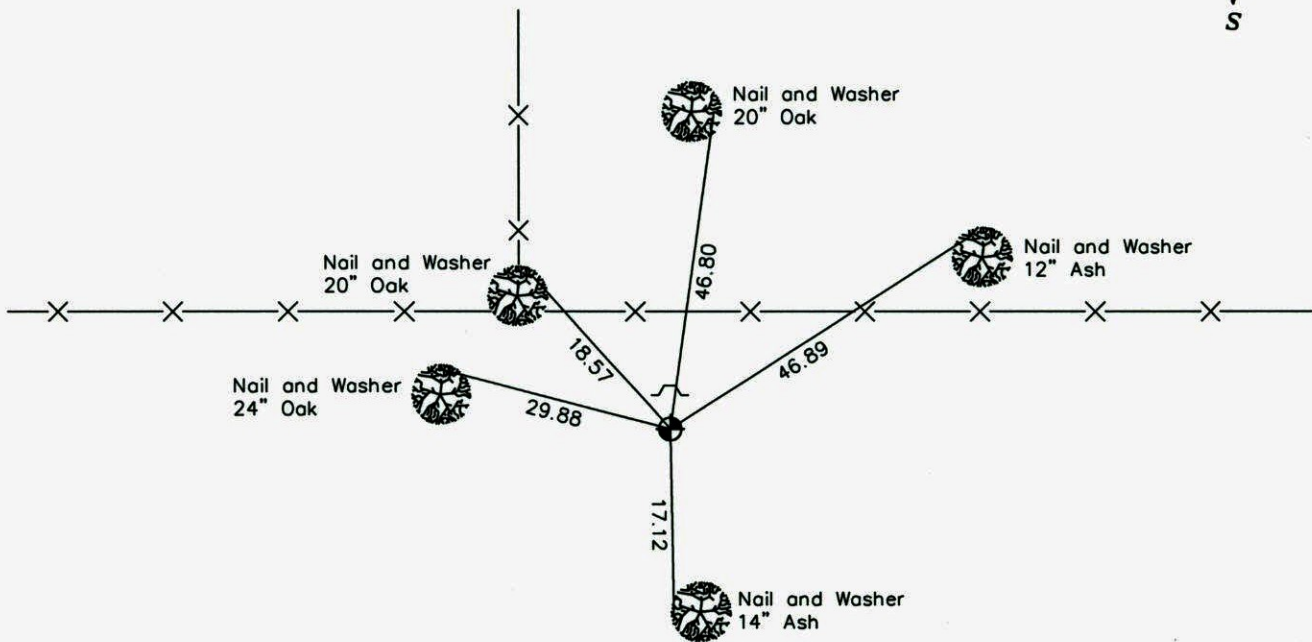
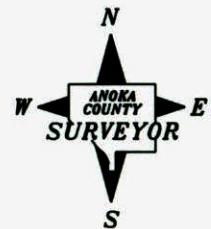
State of Minnesota

## East 1/4 Corner of Sec. 30, Township 33, Range 25

I hereby certify that on the 15th day of October, 1963, I found the described corner which was evidenced by a one inch axle shaft

and I further certify that to perpetuate the location of said corner, I did, at the exact location thereof, place a permanent marker consisting of a cast iron monument with a sign and post on the north side

which reference or witness monuments are located in the manner following:



Revised date      Revised date

8-25-65	8-10-82
7-10-69	7-12-85
8-6-73	6-12-89
7-28-76	6-8-94
7-23-79	

N.A.D. 1983 Co-ordinates  
(1996 Adjustment)

County Project Co-ordinates	State Plane Co-ordinates
Northing <u>204258.0629</u>	Y _____
Easting <u>442449.2992</u>	X _____

Date 2-18-03

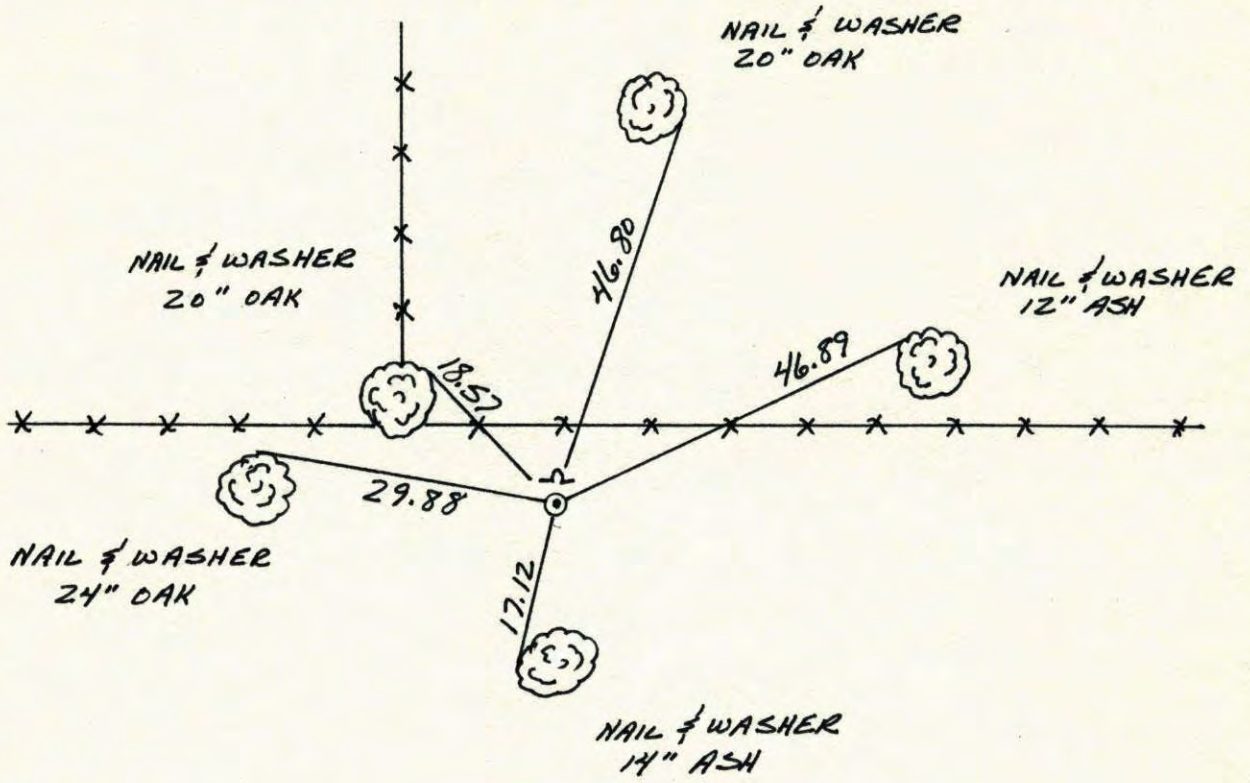
# CERTIFICATE OF LOCATION OF GOVERNMENT CORNER

County of Anoka State of Minnesota

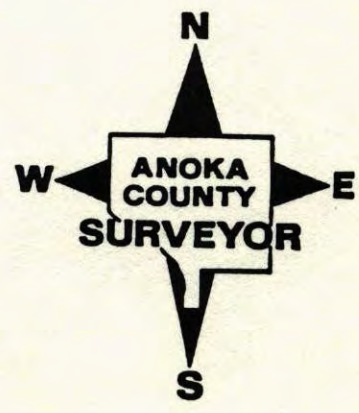
EAST 1/4 Corner of Sec. 30 Township 33 Range 25

I hereby certify that on the 15 day of OCTOBER, 1963 I found the described corner which was evidenced by A 1" AXLE SHAFT

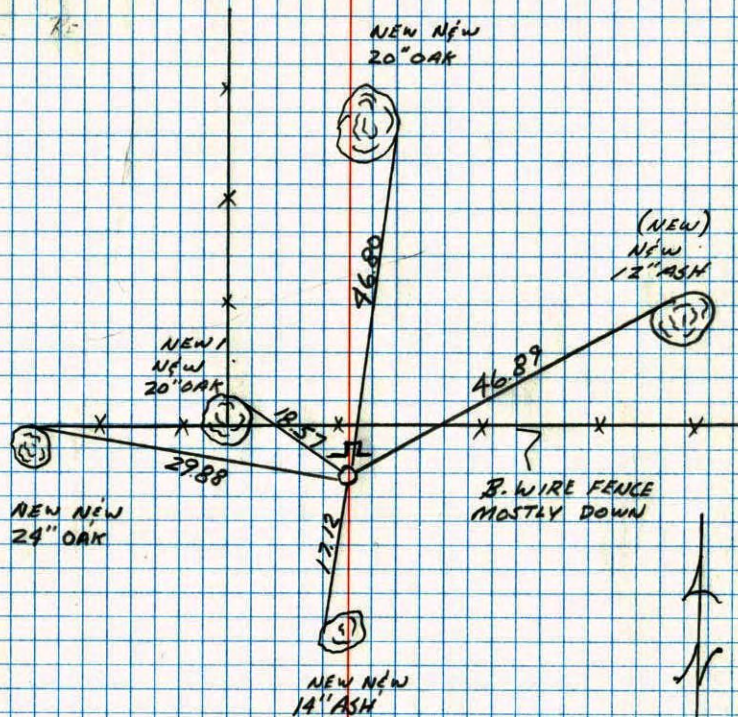
and I further certify that to perpetuate the location of said corner, I did, at the exact location thereof, place a permanent marker consisting of CAST IRON MONUMENT WITH SIGN AND POST ON THE NORTH SIDE which reference or witness monuments are located in the manner following:



Revised date	Revised date	Revised date
8-25-65	6-12-89	
7-10-69	6-8-94	
8-6-73		
7-28-76		
7-23-79		
8-10-82		
7-12-85		

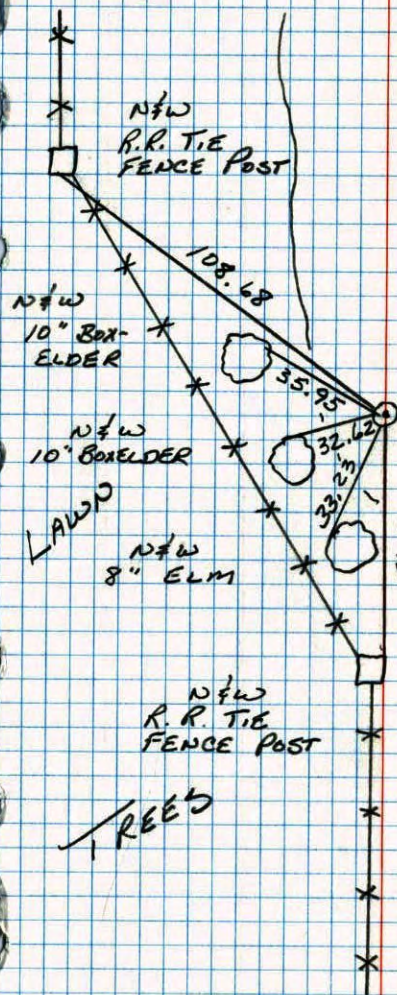


EAST 1/4 SEC. 30 TWP 33 R 25

RETIED CAST IRON MONUMENT SIGN & POST  
ON NORTH SIDE

6-12-89  
 +10° P CLOUDY  
 J. STEVENSON  
 A. SHROYER  
 M. ZIMMERMAN

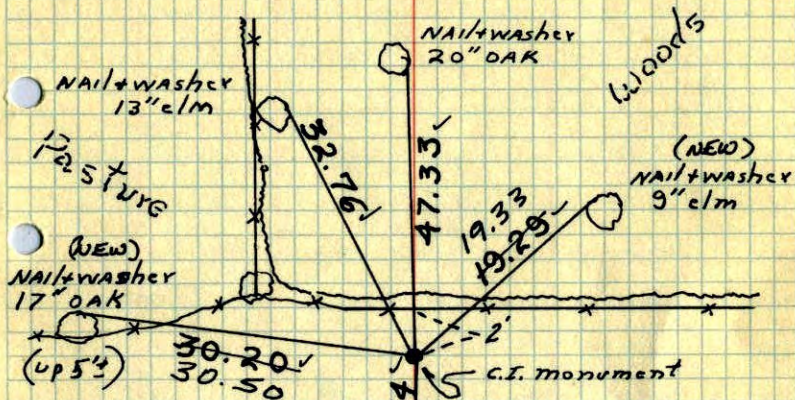
W 1/4 COR SEC 29 T32 R25

RETIED CAST IRON MONUMENT  
MONUMENT DOWN 1.5'±

6-27-88  
 B. GUETERO  
 M. WAJL-H  
 78° 200' TAPE

E 1/4 Cor. Sec. 30 T33 R25

Replace 1" Axle shaft with cast iron monument. C.I. flush up 0.2'±.



Tie check  
Aug. 6, 1973  
B. Olson  
D. B.  
D. F.

Aug. 25, 1965  
M.D. Anderson  
J. Dunlop

Tie Check  
July 10, 1969

TIE CHECK  
8-10-82  
P. Ross  
P. Hornby

TIE CHECK  
7-28-76

G. ADAMS  
S. BRIEN  
J. STEPHENS

TIE CHECK  
7-2-3-79  
B. STEPHENS  
D. STEPHENS  
P. Ross

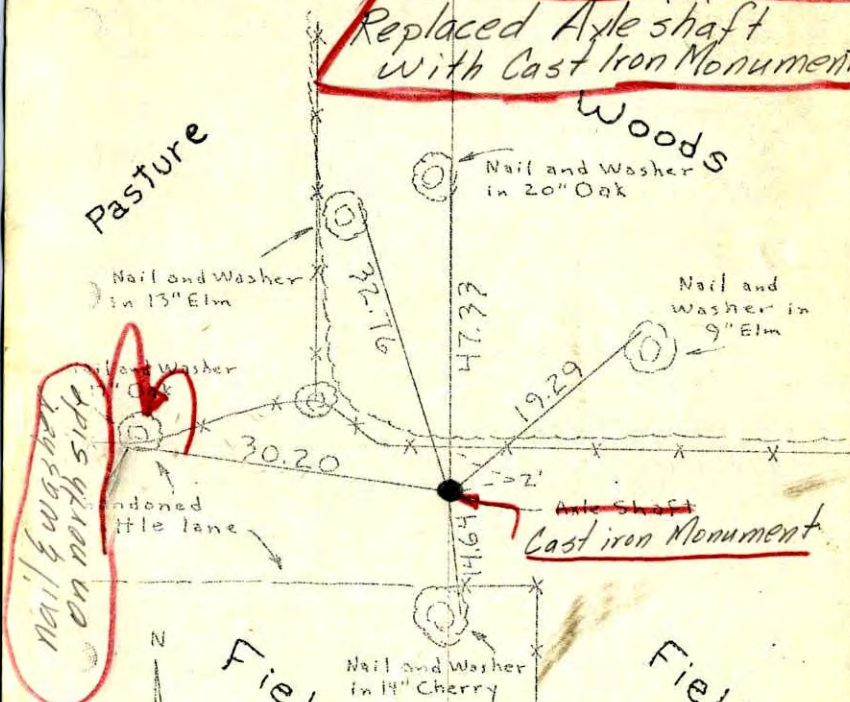
TEMPERATURE CORRECTED  
AND HORIZONTALLY  
TAPED MEASUREMENTS

ROLAND W. ANDERSON  
COUNTY SURVEYOR  
ANOKA COUNTY, MINNESOTA

E 1/4 Cor. Sec. 30, T33, R25

Found 1" Axle Shaft sticking up 0.4'

Replaced Axle shaft  
with Cast Iron Monument



nail & washer  
on north side

15 Oct 63  
J. Oliver  
M. D. Anderson

tiecheck  
Aug. 25, 1965  
M. D. Anderson  
J. Dunlop

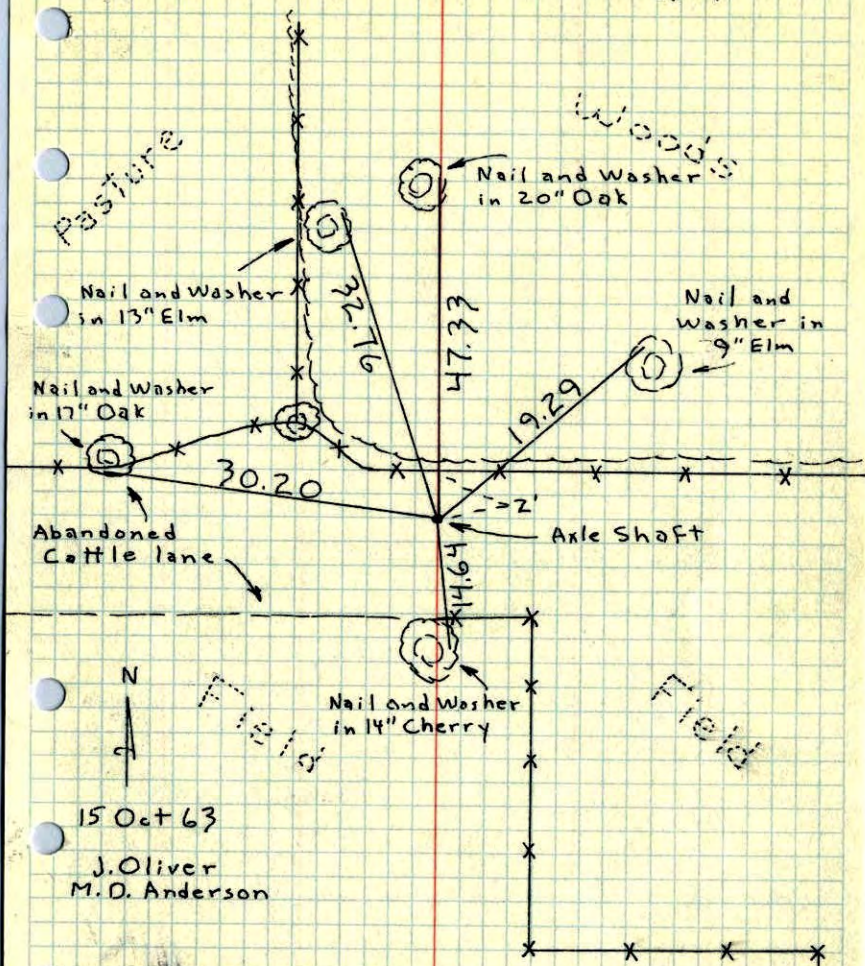
All ties O.K.

TEMPERATURE CORRECTED  
AND HORIZONTALLY  
TAPED MEASUREMENTS

ROLAND W. ANDERSON  
COUNTY SURVEYOR  
ANOKA COUNTY, MINNESOTA

E 1/4 Cor. Sec. 30, T33, R25

Found 1" Axle Shaft ~~sticking~~ up 0.4'.



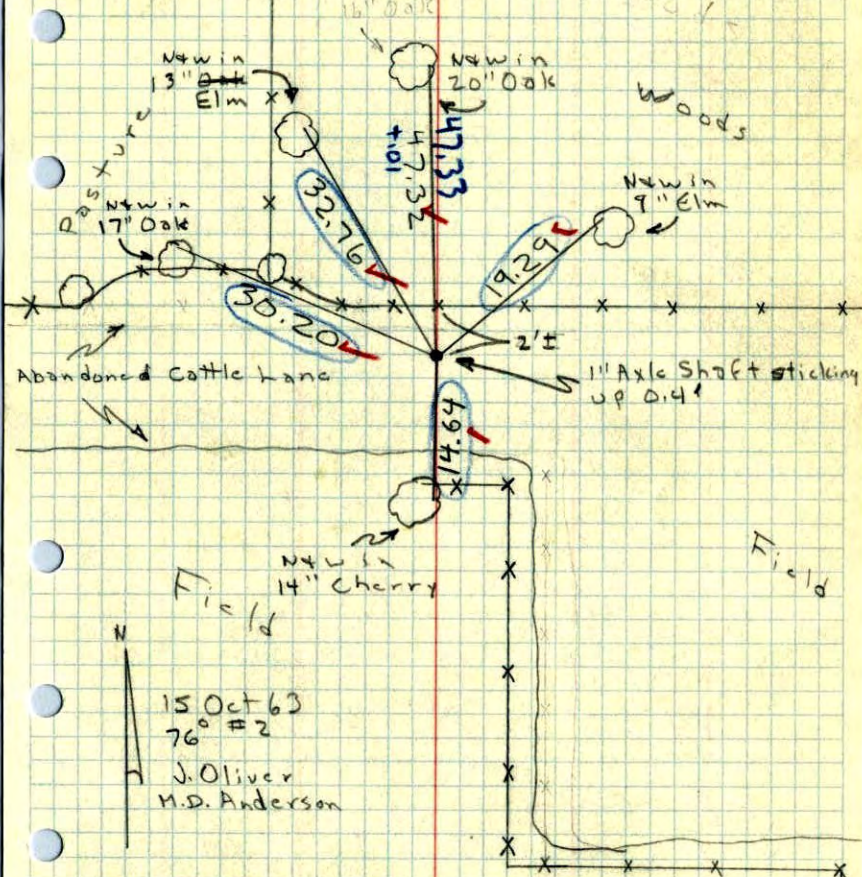
15 Oct 63  
J. Oliver  
M.D. Anderson

TEMPERATURE CORRECTED ROLAND W. ANDERSON  
AND HORIZONTAL COUNTY SURVEYOR  
TAPED MEASUREMENTS ANOKA COUNTY, MINNESOTA

E 1/4 Cor. Sec. 30, T33, R25

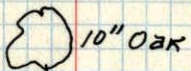
Found 1" Axle Shaft in place of  
Conc. Mon. per Cartwright's ties.

Note: Found that other Supposed Concretes in this area are Axle shafts or Irons. Farmer in SW 1/4 Sec. 30 says shaft was put in by Cartwright.



15 Oct 63  
76° #2  
J. Oliver  
M.D. Anderson

E 1/4 CORNER OF SEC 30, T33, R25  
CONC. MON.



N 20° W  
47.3

Revised  
15 Oct 63  
J.O.

CONCRETE

S 63° E  
105.2



20" OAK

Nov 9, 1946  
CARTWRIGHT