

# CERTIFICATE OF LOCATION OF GOVERNMENT CORNER

County of Anoka

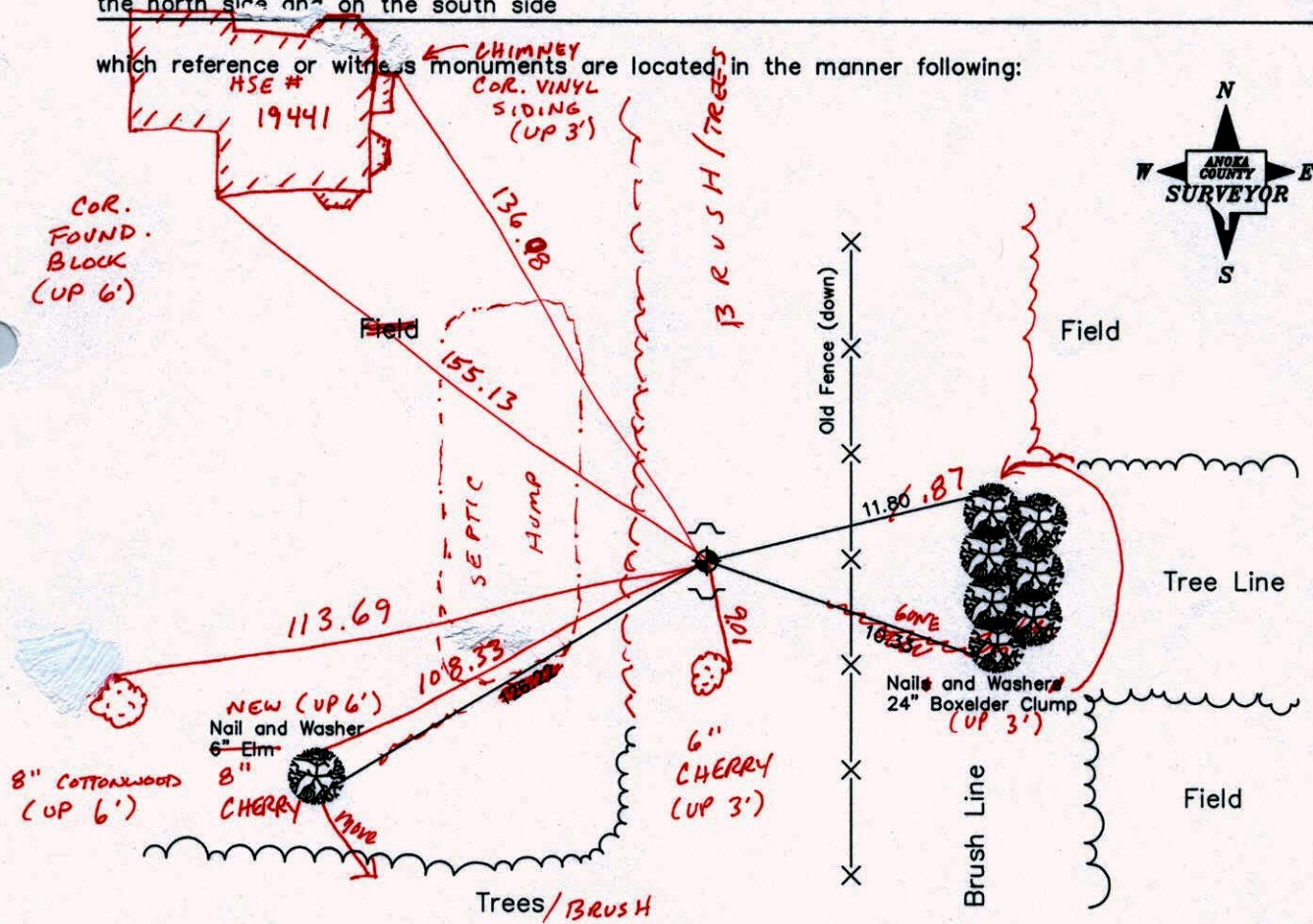
State of Minnesota

## West 1/4 Corner of Sec. 28, Township 33, Range 25

I hereby certify that on the 20th day of July, 1971, I found the described corner which was evidenced by Area Resurvey

and I further certify that to perpetuate the location of said corner, I did, at the exact location thereof, place a permanent marker consisting of a cast iron monument with a sign and post on the north side and on the south side

which reference or witness monuments are located in the manner following:



11-1-13  
BK-SS  
T/T

Revised date

9-1-88
7-13-94

N.A.D. 1983 Co-ordinates  
(1996 Adjustment)

County Project Co-ordinates		State Plane Co-ordinates	
Northing	204180.9391	Y	_____
Easting	447666.7186	X	_____

Date 2-18-03



# CERTIFICATE OF LOCATION OF GOVERNMENT CORNER

County of Anoka

State of Minnesota

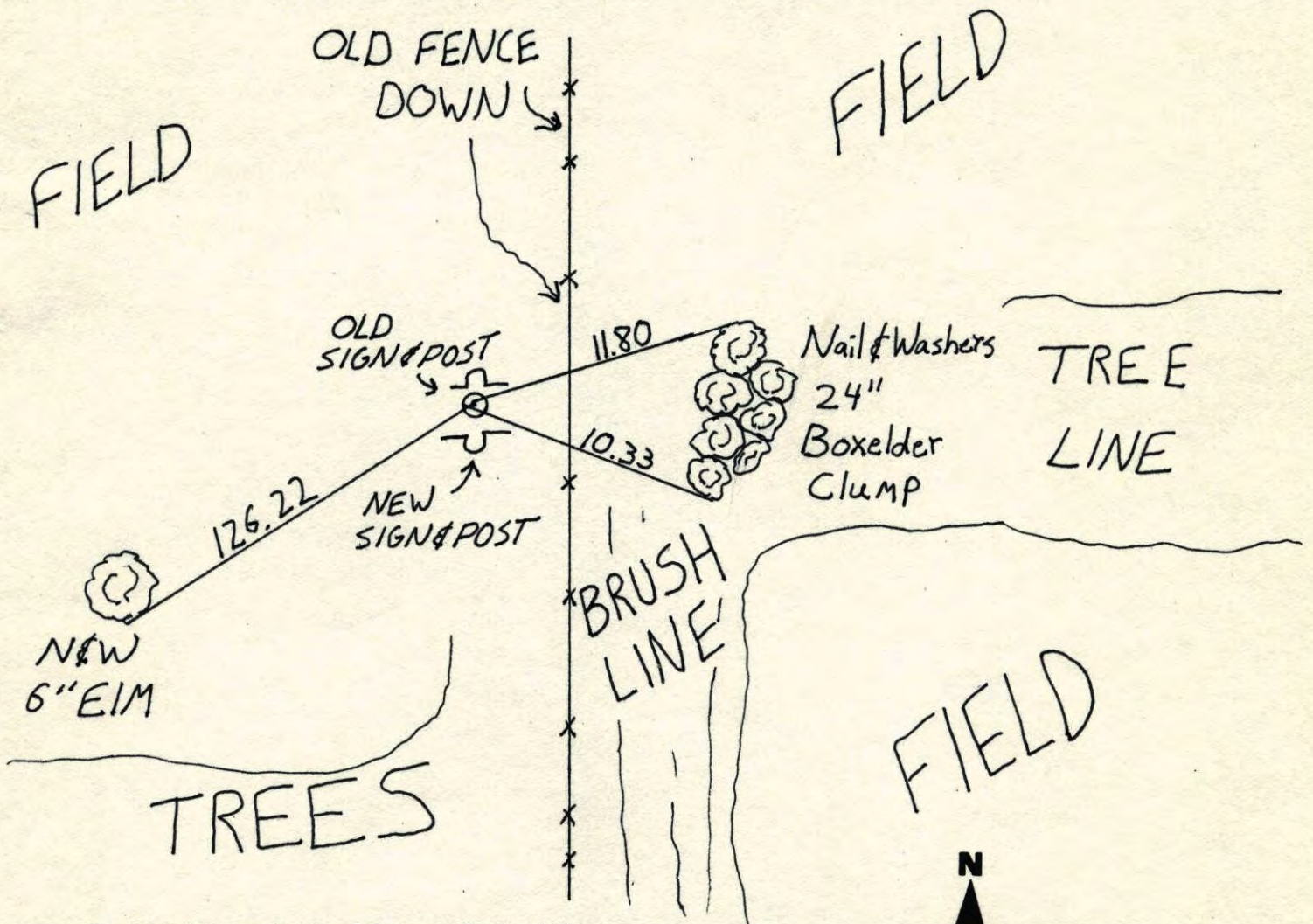
WEST 1/4 Corner of Sec. 28 Township 33 Range 25

I hereby certify that on the 20 day of JULY, 19 71, I found the described corner which was evidenced by AREA RESURVEY

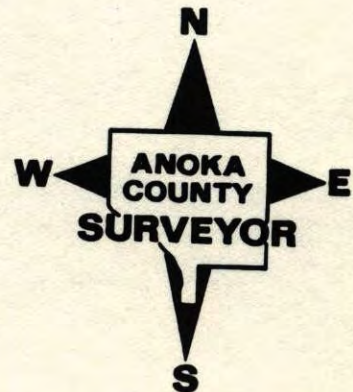
and I further certify that to perpetuate the location of said corner, I did, at the exact location thereof, place a permanent marker consisting of CAST IRON MON.

SIGN & POST NORTH SIDE & SOUTH SIDE

which reference or witness monuments are located in the manner following:



Revised date	Revised date	Revised date
9-1-88		
7-13-94		



W 1/4 Sec. 28 T. 33 R. 25

RETIED CAST IRON  
MONUMENT - NEW  
SIGN AND POST S. SIDE

JOSH ANDERSON  
JAYME ANDERSON

7-13-94

FIELD



FIELD

OLD SIGN POST (BENT)

11.80

TREE  
LINE

10.33

NAILS &  
WASHERS  
24" BOXELDER  
CLUMP

126.22

BRUSH  
LINE

FIELD

NAIL & WASHER  
6" ELM

W 1/4 CORNER SEC 28 T 33 R 25

RETIED CAST IRON MONUMENT

FIELD

NFW  
3" BOXELDER

NFW  
8" BOXELDER



14.40

11.23

11.80

TREE  
LINE

FIELD

8.91

10.33



24"

15"

18"

NFW'S  
CLUSTER OF  
LARGE BOXELDERS

FIELD

OLD FENCE  
(DOWN)



9-1-88  
B. GUETZHO  
A. SHROYER  
75° 200' TAPE

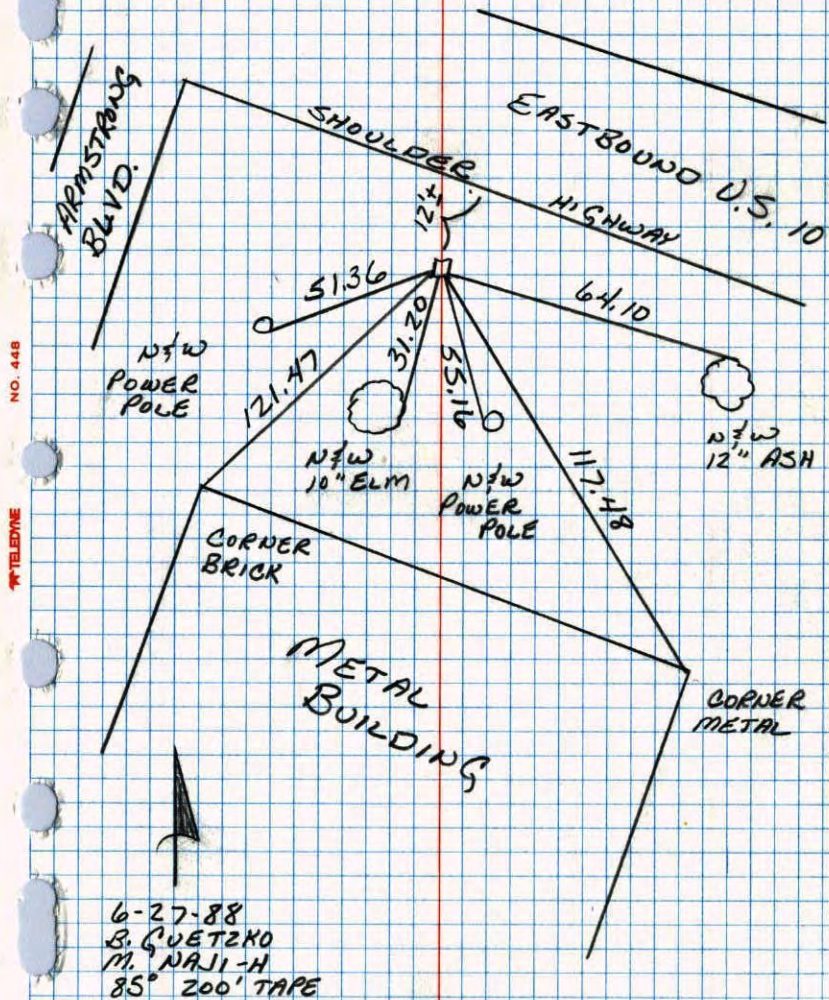
W 1/4

107

E 1/4 CORNER SEC 28 T32 R25

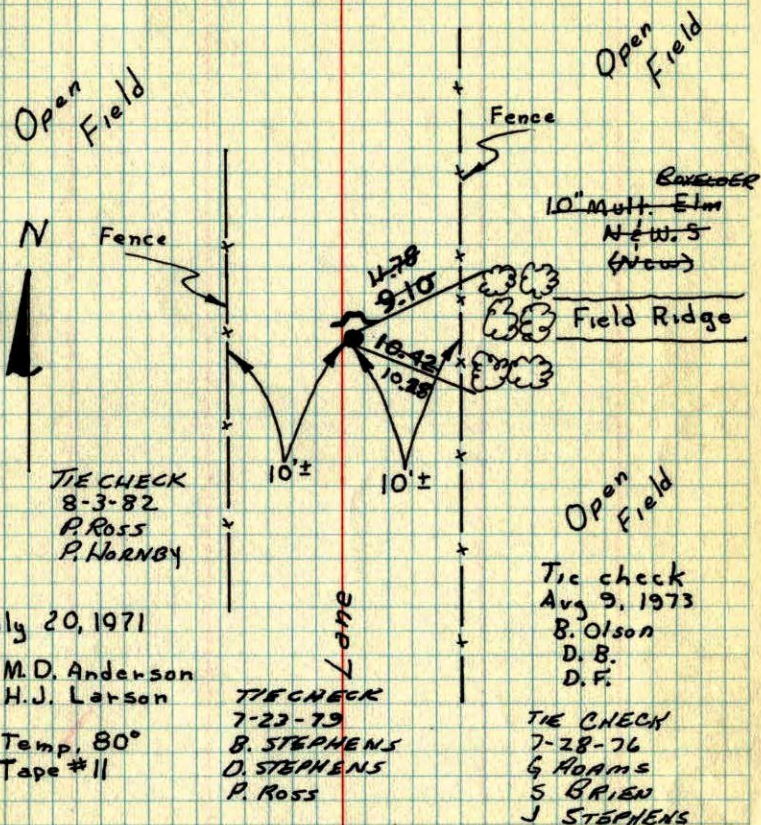
RETIRED CONCRETE MONUMENT

1" I.P. ON NORTH SIDE



92

W. 1/4 Cor. Sec. 28-T33-R25

Set Cast Iron Mon.  
Set From Area ResurveySet Steel Signpost With Warning Sign  
1/2 ± N. OF Mon.

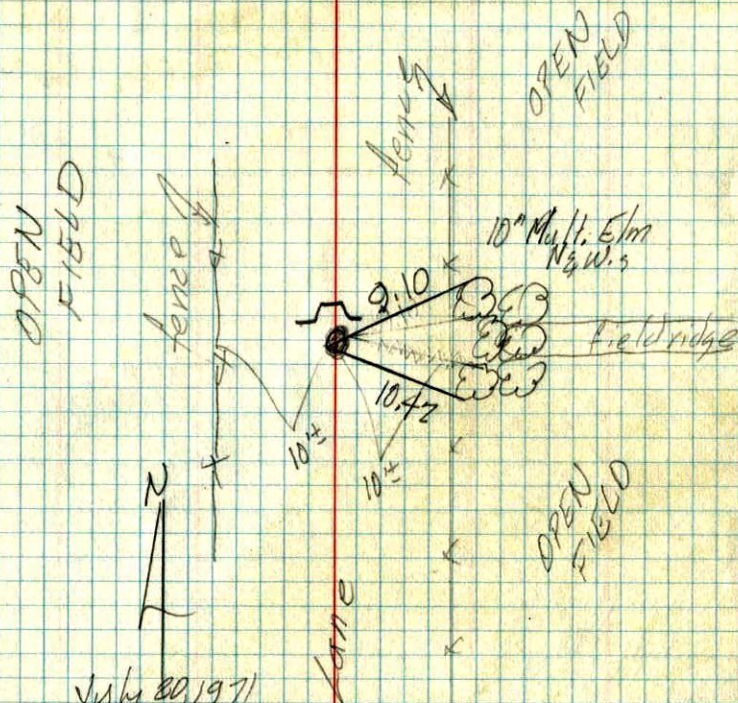
TEMPERATURE CORRECTED ROLAND W. ANDERSON  
AND HORIZONTALLY COUNTY SURVEYOR  
TAPED MEASUREMENTS ANOKA COUNTY, MINNESOTA

W. 1/4 Cor. Sec. 28-T 33-R 25

set C. 1 Mon.

set from area resurvey

set steel sign post with warning.  
sign 1/2<sup>1</sup>/<sub>2</sub> N of Mon.



July 20, 1971  
M. D. Anderson  
H. S. Carlson  
temp 80°  
tape 110

ROLAND W. ANDERSON  
COUNTY SURVEYOR  
ANOKA COUNTY, MINNESOTA

TEMPERATURE CORRECTED  
AND HORIZONTALLY  
TAPED MEASUREMENTS