

JS SW SS 12-2-13 REMOVED BROKEN CIM. RESET SOLID CIM.

SET SIGN + POST ON S. SIDE

VRS OF NEW POSITION N 204973.4517

3DQ=0.05 E 458171.4082

CERTIFICATE OF LOCATION OF GOVERNMENT CORNER

County of Anoka

State of Minnesota

Witness Corner of Sec. 27, Township 33, Range 25

On the East Line of the Northeast Quarter of Sec. 27

I hereby certify that on the 25th day of July, 1975, I found the described corner which was

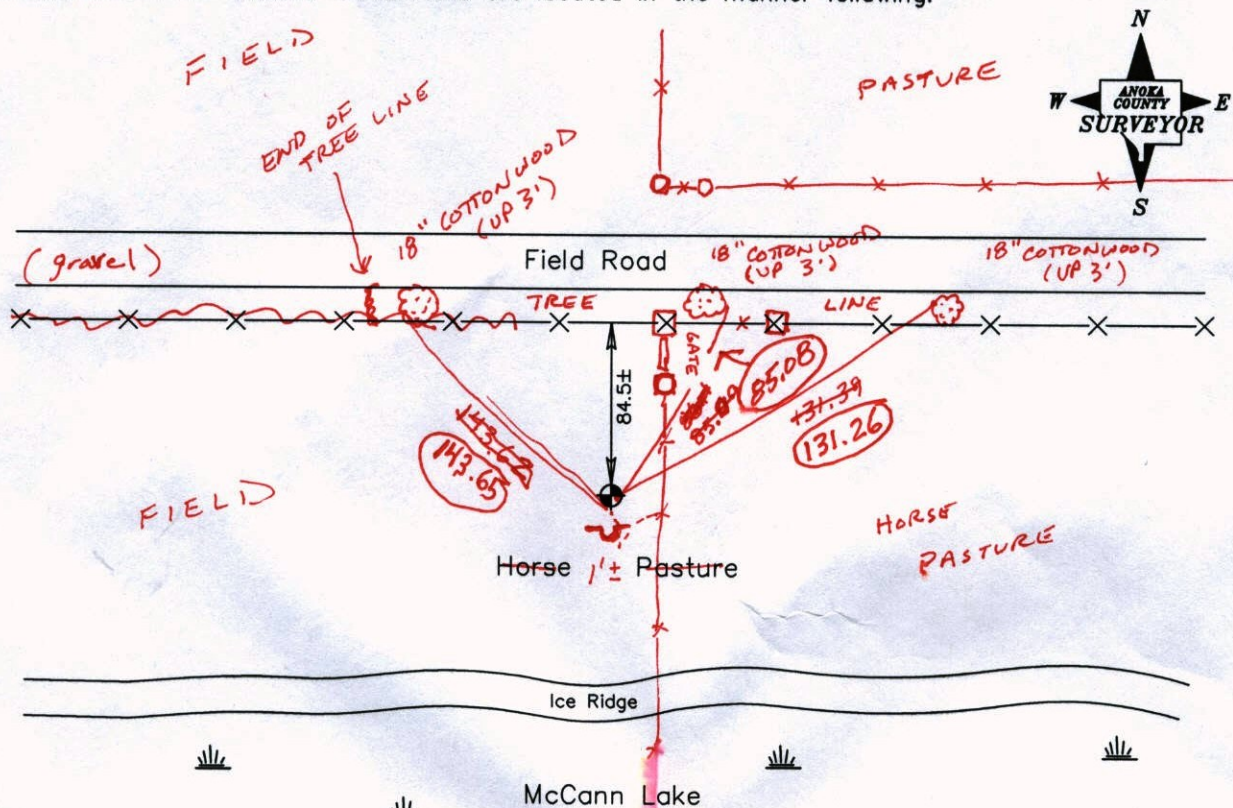
evidenced by Area Resurvey

and I further certify that to perpetuate the location of said corner, I did, at the exact location thereof, place a permanent marker consisting of a cast iron monument (located 1780 ft. south of the NE Corner & 1971.36 ft. north of the south Witness Corner)

FOUND BROKEN TIED OUT CENTER OF FIN 11-1-13 BK-SS

** COULD USE SIGN & POST*

which reference or witness monuments are located in the manner following:



11-1-13
BK-SS
T/T - VRS

CIRCLED DIST'S ARE THE CORRECT TO NEW CIM.

Revised date

| |
|---------|
| 7-15-85 |
| 7-13-88 |
| 7-7-89 |
| 7-21-94 |

N.A.D. 1983 Co-ordinates
(1996 Adjustment)

| County Project Co-ordinates | | State Plane Co-ordinates | |
|-----------------------------|-------------|--------------------------|--|
| Northing | 204973.4714 | Y | |
| Easting | 458171.4144 | X | |

Date 2-25-03

VRS 3DQ=0.08 N=204973.5104 E=458171.3439

CERTIFICATE OF LOCATION OF GOVERNMENT CORNER

County of Anoka

State of Minnesota

Witness Corner of Sec. 27, Township 33, Range 25

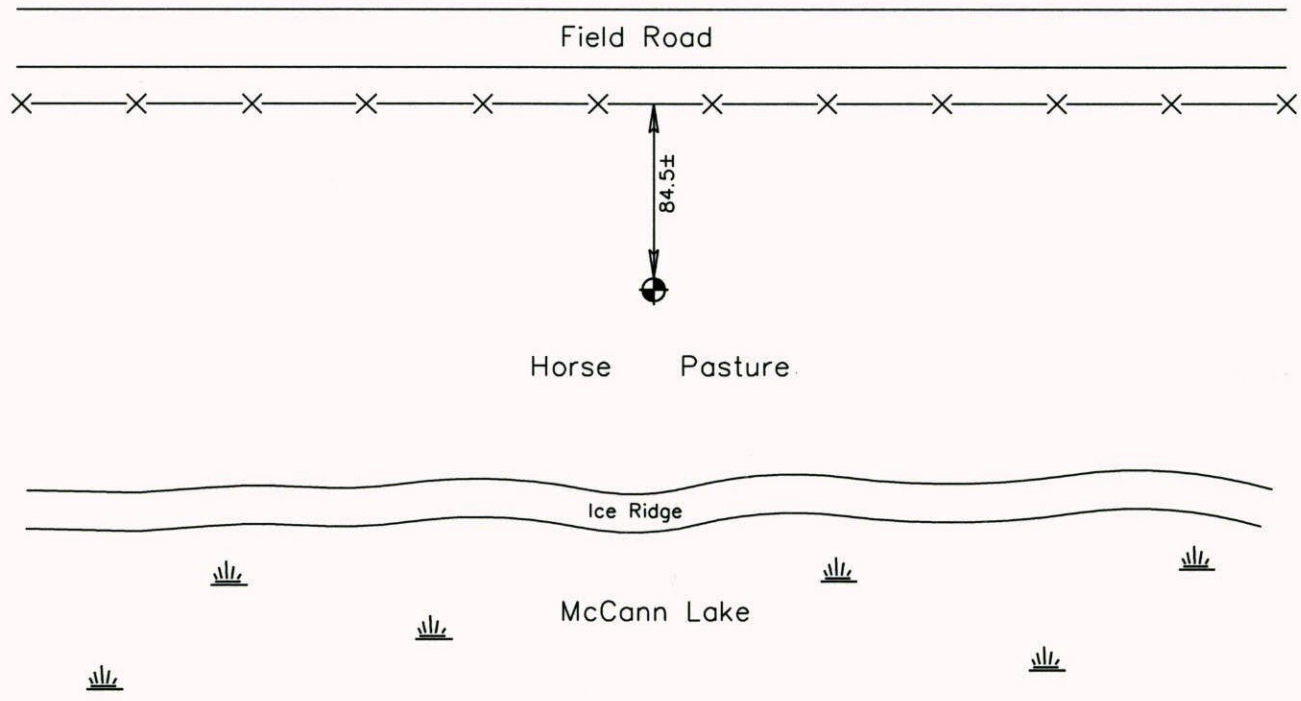
On the East Line of the Northeast Quarter of Sec. 27

I hereby certify that on the 25th day of July, 1975, I found the described corner which was

evidenced by Area Resurvey

and I further certify that to perpetuate the location of said corner, I did, at the exact location thereof, place a permanent marker consisting of a cast iron monument (located 1780 ft. south of the NE Corner & 1971.36 ft. north of the south Witness Corner)

which reference or witness monuments are located in the manner following:



Revised date

| |
|---------|
| 7-15-85 |
| 7-13-88 |
| 7-7-89 |
| 7-21-94 |
| |

N.A.D. 1983 Co-ordinates
(1996 Adjustment)

| County Project Co-ordinates | | State Plane Co-ordinates | |
|-----------------------------|--------------------|--------------------------|-------|
| Northing | <u>204973.4714</u> | Y | _____ |
| Easting | <u>458171.4144</u> | X | _____ |

Date 2-25-03

CERTIFICATE OF LOCATION OF GOVERNMENT CORNER

County of Anoka

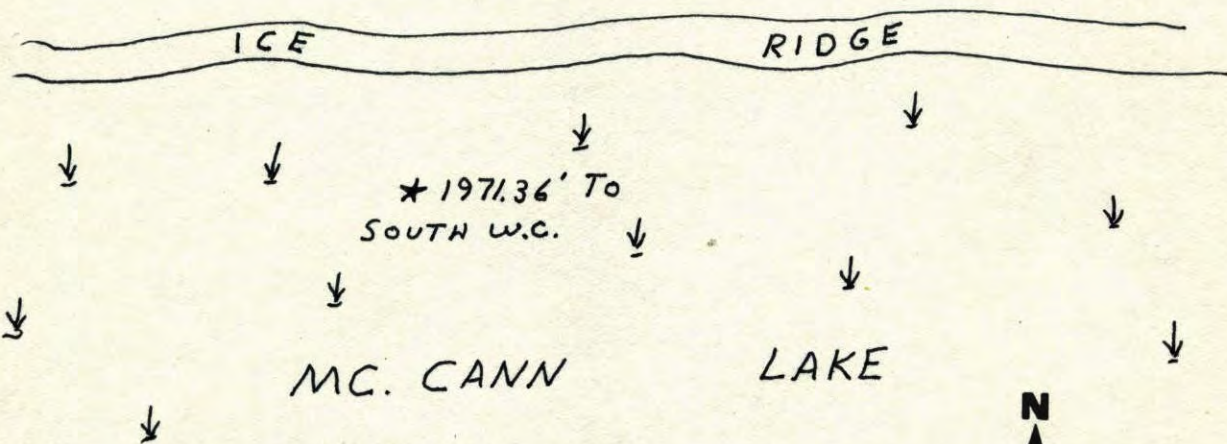
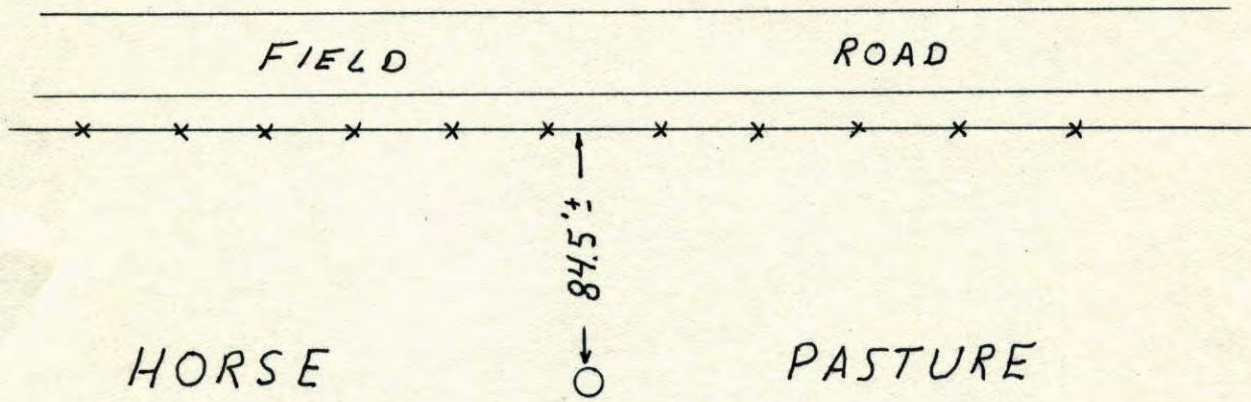
State of Minnesota

WITNESS Corner of Sec. 27 Township 33 Range 25
 ON E. LINE OF NE 1/4

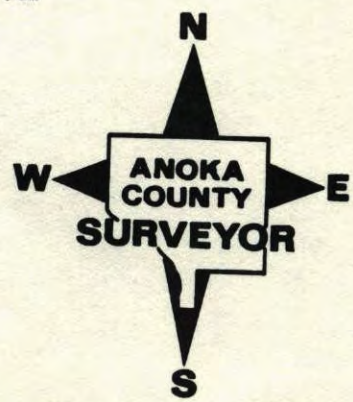
I hereby certify that on the 25 day of JULY, 19 75, I found the described corner which was evidenced by AREA RESURVEY

and I further certify that to perpetuate the location of said corner, I did, at the exact location thereof, place a permanent marker consisting of CAST IRON MONUMENT

which reference or witness monuments are located in the manner following: ★ 1780' SOUTH OF NE CORNER



| Revised date | Revised date | Revised date |
|----------------|--------------|--------------|
| 7-15-85 | | |
| 7-13-88 RE.SET | | |
| 7-7-89 | | |
| 7-21-94 | | |
| | | |
| | | |
| | | |



W.C. ON EAST LINE OF NE 1/4 SEC. 27 T33 R25

CORNER WAS DESTROYED RESET FROM AREA
RESURVEY. C.I. FLUSH WITH SIGN AND POSTS
ON EAST AND WEST SIDES

7-13-88
H. LARSON
J. STEVENSON
A. SHROYER
M. MAST-H

FIELD

FIELD ROAD

* 1780' SOUTH
OF NE CORNER

84.5'

ICE RIDGE

Mc GANN

LAKE

1971.36 W.S. TO SOUTH

NO. 418

TELEPHONE

East NE 94A
W.C. On West Line Of NW 1/4 Sec 26
T33 R25

Set Cast Iron Monument From Area
Resurvey. C.I. Flush With Sign & Post
On South Side.

N.W.
Cor.

Field

Field

7-25-75

H. Larson
R. Guetzka
J. Beutcher

Pond

TIECHECK
8-9-82
P. ROSS
P. HORNBY

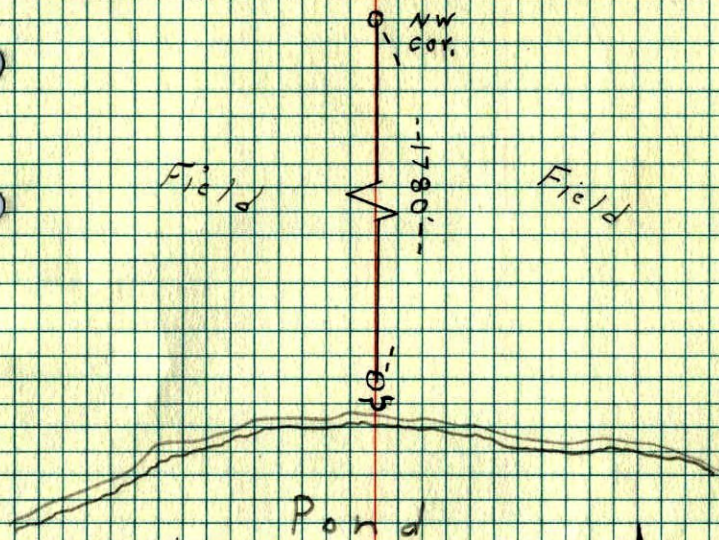
TIECHECK
7-29-79
B. STEPHENS
D. STEPHENS
P. ROSS

TEMPERATURE CORRECTED ROLAND W. ANDERSON
AND HORIZONTALLY COUNTY SURVEYOR
TAPED MEASUREMENTS ANOKA COUNTY, MINNESOTA

East NE
W.C. on ~~West~~ Line of ~~NW~~ 1/4 Sec. 26

T33 R25

Set cast iron monument from area
resurvey. C.T. Flush with sign + post
on South side.



7-25-75
H. Larson
B. Guetzko
J. Beutcher