

# CERTIFICATE OF LOCATION OF GOVERNMENT CORNER

County of Anoka

State of Minnesota

## Witness Corner of Sec. 27, Township 33, Range 25

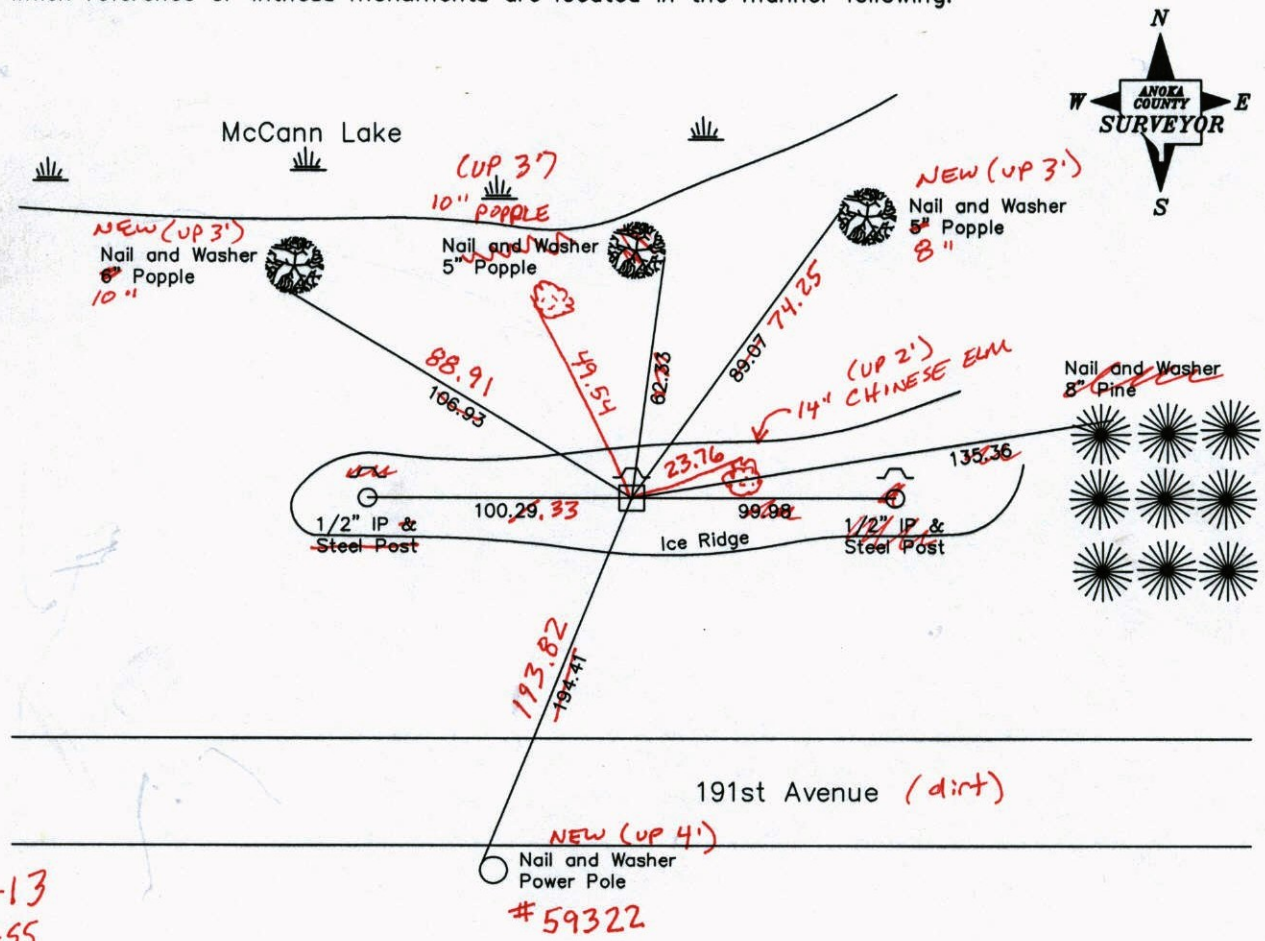
On the East Line of the Southeast Quarter of Sec. 27

I hereby certify that on the 10th day of June, 1964, I found the described corner which was

evidenced by a granite monument

and I further certify that to perpetuate the location of said corner, I did, at the exact location thereof, place a permanent marker consisting of a granite monument with a sign and post on the north side

which reference or witness monuments are located in the manner following:



11-5-13  
BK-55  
T/A - VRS

Revised date

6-27-85
6-29-89
7-21-94

N.A.D. 1983 Co-ordinates  
(1996 Adjustment)

County Project Co-ordinates		State Plane Co-ordinates	
Northing	203002.2132	Y	_____
Easting	458191.8338	X	_____

Date 2-25-03

3D = 0.07    N = 203002.1182    E = 458191.7775

# CERTIFICATE OF LOCATION OF GOVERNMENT CORNER

County of Anoka

State of Minnesota

## Witness Corner of Sec. 27, Township 33, Range 25

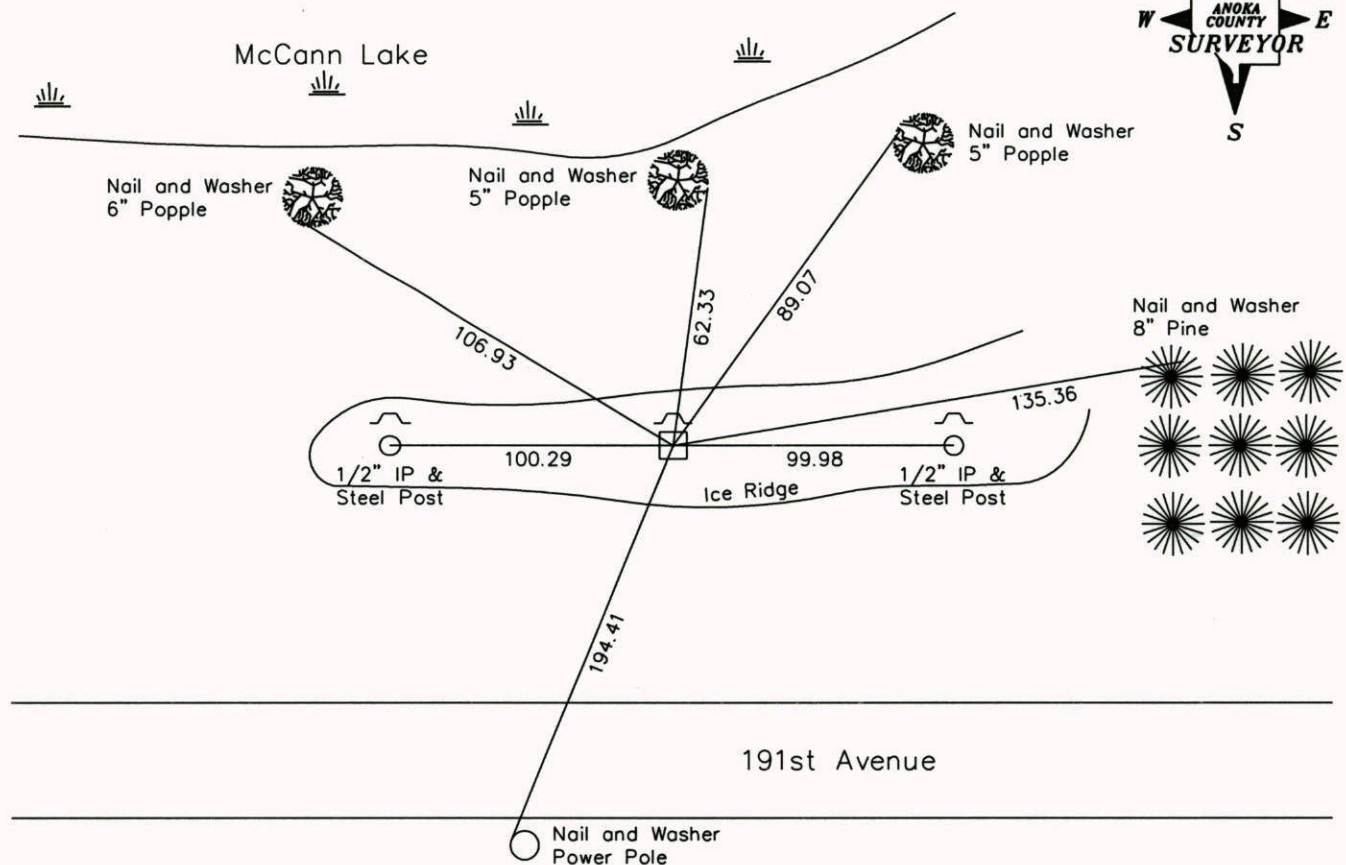
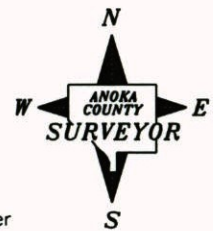
On the East Line of the Southeast Quarter of Sec. 27

I hereby certify that on the 10th day of June, 1964, I found the described corner which was

evidenced by a granite monument

and I further certify that to perpetuate the location of said corner, I did, at the exact location thereof, place a permanent marker consisting of a granite monument with a sign and post on the north side

which reference or witness monuments are located in the manner following:



Revised date

6-27-85
6-29-89
7-21-94

N.A.D. 1983 Co-ordinates  
(1996 Adjustment)

County Project Co-ordinates		State Plane Co-ordinates	
Northing	203002.2132	Y	_____
Easting	458191.8338	X	_____

Date 2-25-03

# CERTIFICATE OF LOCATION OF GOVERNMENT CORNER

County of Anoka

State of Minnesota

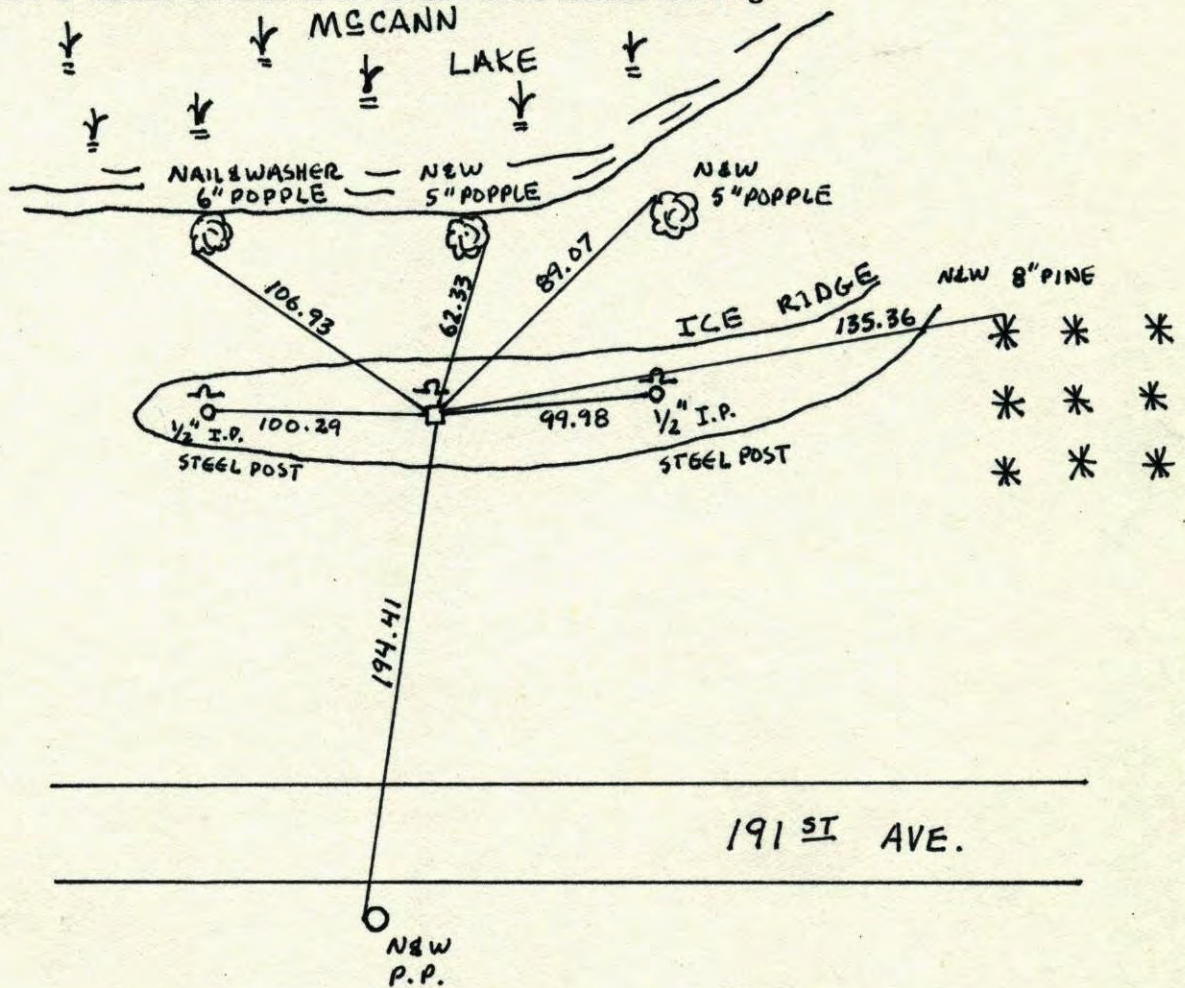
W.C. ONEAST LINE

OF S.E.  $\frac{1}{4}$  Corner of Sec. 27 Township 33 Range 25

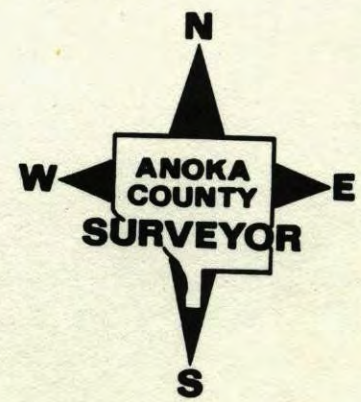
I hereby certify that on the 10 day of JUNE, 1964, I found the described corner which was evidenced by GRANITE MONUMENT

and I further certify that to perpetuate the location of said corner, I did, at the exact location thereof, place a permanent marker consisting of SAME ; SIGN AND POST ON NORTH SIDE

which reference or witness monuments are located in the manner following:

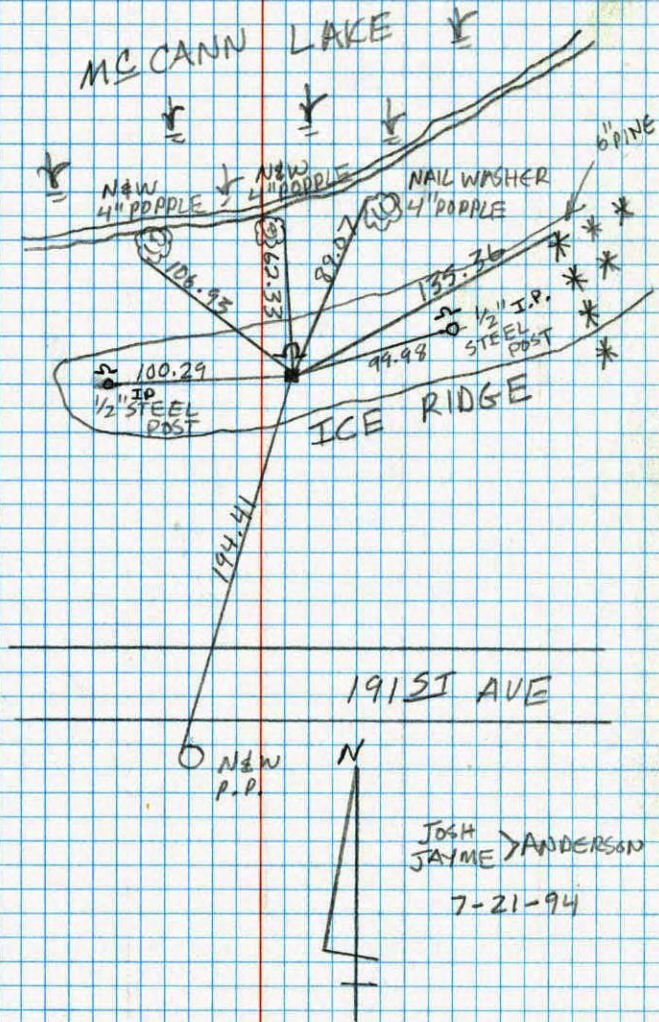


Revised date	Revised date	Revised date
6-27-85		
6-29-89		
7-21-94		

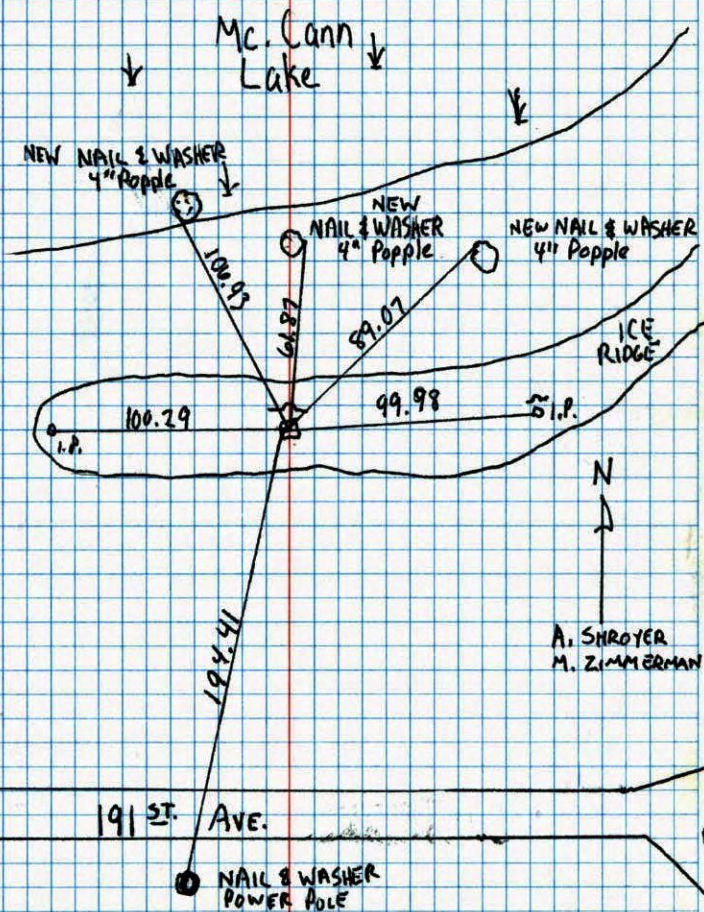


W.C. ON EAST  
LINE OF SE 1/4 SEC. 27 T. 33 R. 25

RETIE GRANITE MONUMENT,  
SIGN & POST N. SIDE

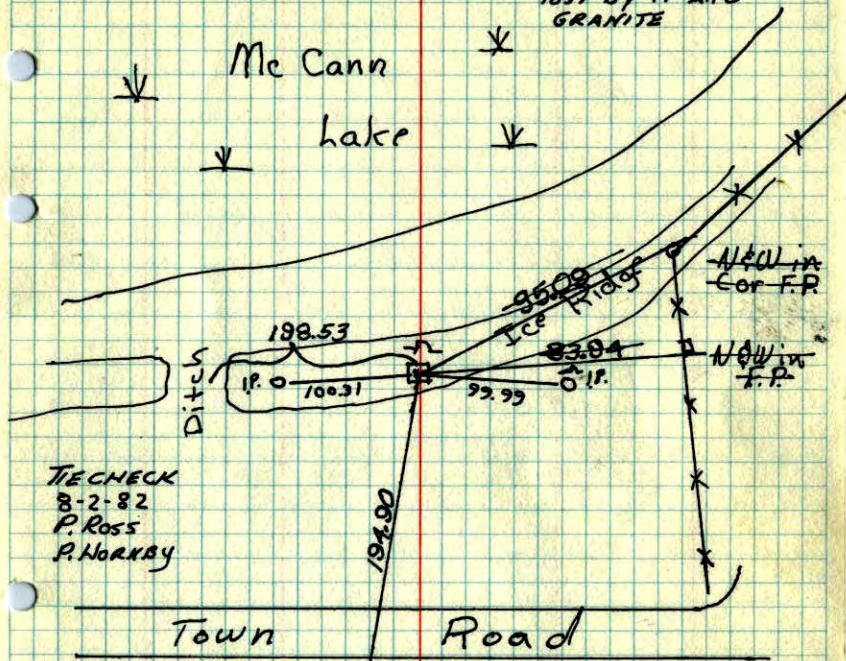


WITNESS CORNER ON EAST SEC. 27 T. 33 R. 25  
Retied granite monument.



Witness Corner on E. line SE 1/4 of Sec. 27, T33, R 25

Found 6" Sq. Granite mon. up 0.1' and set to cardinal points. \* SET 1/2" I.P. WITH POST BY I.P. AND GRANITE



TIE CHECK  
8-2-82  
P. ROSS  
P. HORKBY

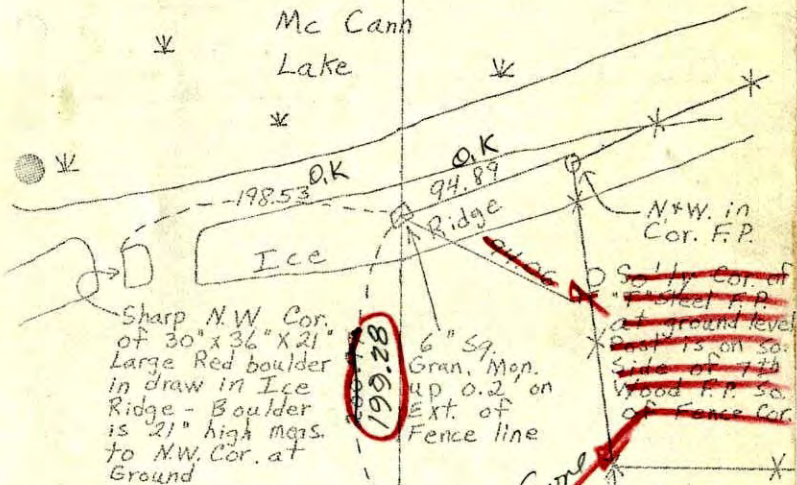
Tie Check Aug 1, 1973 N+W in P.P. 19 June 1964

B. Olson	TIE CHECK	J. Oliver
D. Brien	7-28-76	N. Livgard
D. Farmer	G. ADAMS	J. Dunlap
	7-29-79	
	J. STEPHENS	
	B. STEPHENS	
	D. STEPHENS	
	P. ROSS	

TEMPERATURE CORRECTED AND HORIZONTALLY TAPED MEASUREMENTS ROLAND W. ANDERSON COUNTY SURVEYOR ANOKA COUNTY, MINNESOTA

Witness Corner on E. line SE 1/4 of Sec 27, T 33, R 25

Found 6" Sq. Granite mon. up 0.2' and set to cardinal points.



Sharp N.W. Cor. of 30" x 36" x 21" Large Red boulder in draw in Ice Ridge - Boulder is 21" high meas. to N.W. Cor. at Ground

Tie check Aug 17, 1965 M.D. Anderson J. Dunlap 740#5

N+W. in Cor. F.P. New post 1/6th line?

19 June 64 J. Oliver N. Livgard J. Dunlap

TEMPERATURE CORRECTED AND HORIZONTALLY TAPED MEASUREMENTS

ROLAND W. ANDERSON COUNTY SURVEYOR ANOKA COUNTY, MINNESOTA

Entered HL

Witness Corner on E. line SE 1/4 of.  
 Sec. 27, T33, R25

Found 6" Sq. Granite mon. up 0.2'  
 and set to cardinal points.

Mc Cann  
 Lake

