

CERTIFICATE OF LOCATION OF GOVERNMENT CORNER

County of Anoka

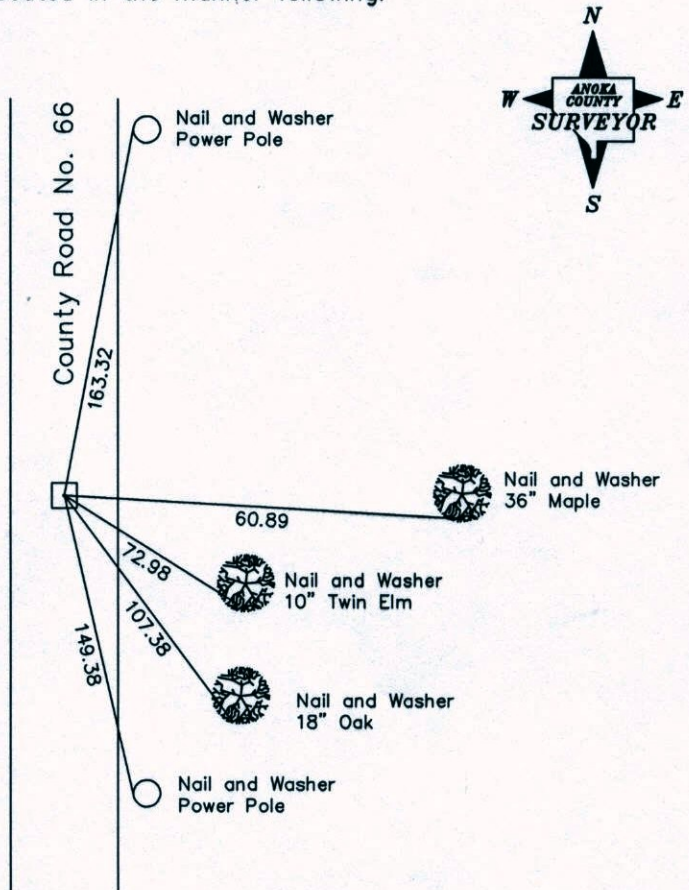
State of Minnesota

Center of Sec. 26, Township 33, Range 25

I hereby certify that on the 14th day of May, 1975, I found the described corner which was evidenced by a granite monument

and I further certify that to perpetuate the location of said corner, I did, at the exact location thereof, place a permanent marker consisting of a granite monument

which reference or witness monuments are located in the manner following:



Revised date

7-26-76
7-19-79
8-3-82
7-12-85
7-5-89

N.A.D. 1983 Co-ordinates
(1996 Adjustment)

County Project Co-ordinates	State Plane Co-ordinates
Northing _____	Y _____
Easting _____	X _____

Date _____

CERTIFICATE OF LOCATION OF GOVERNMENT CORNER

County of Anoka

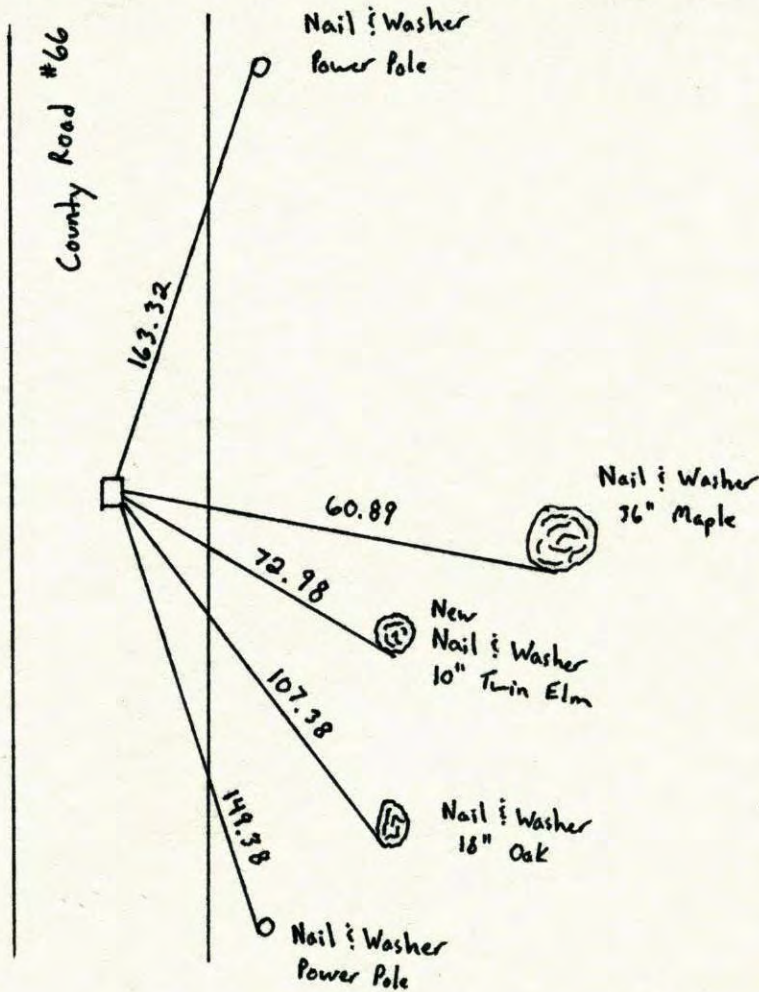
State of Minnesota

Center _____ Corner of Sec. 26 Township 33 Range 25

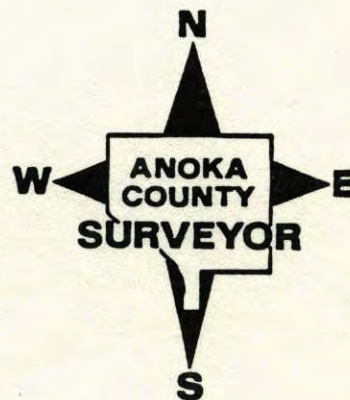
I hereby certify that on the 14 day of May, 1975, I found the described corner which was evidenced by Granite Monument

and I further certify that to perpetuate the location of said corner, I did, at the exact location thereof, place a permanent marker consisting of Same

which reference or witness monuments are located in the manner following:

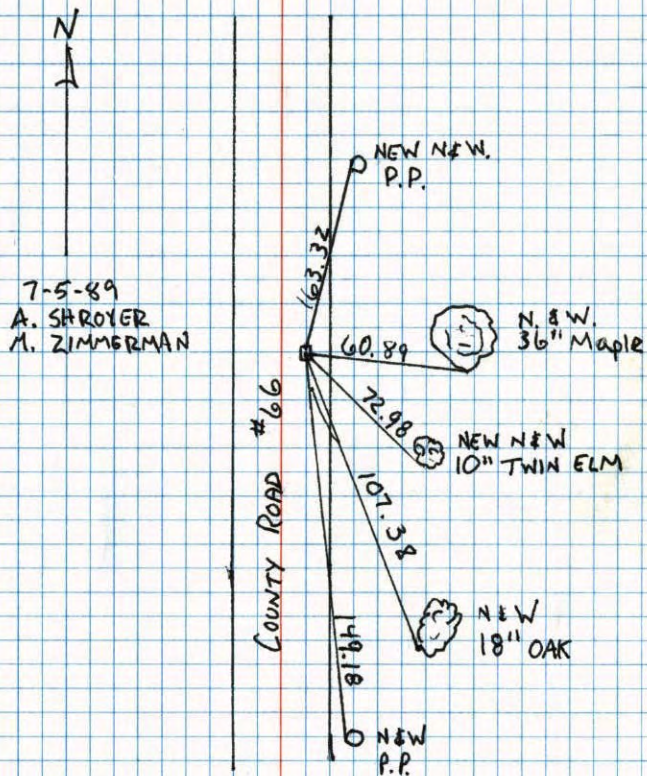


Revised date	Revised date	Revised date
7-26-76		
7-19-79		
8-3-82		
7-12-85		
7-5-89		



CENTER CORNER SEC. 26 T.33 R.25

Retied granite monumen - down 4" ±.

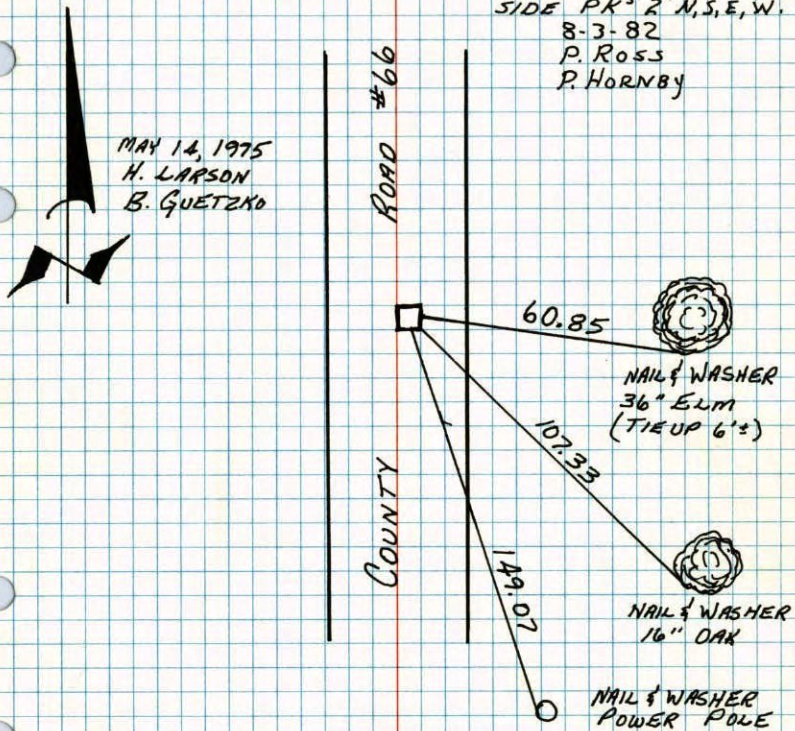


CENTER OF SEC. 26, T33, R.25

FOUND AND TIED GRANITE MONUMENT

FLUSH WITH BLACKTOP EL is 7' ± EAST OF E

1/2" I.P. ON NORTH
SIDE PK'S 2' N, S, E, W.
8-3-82
P. ROSS
P. HORNBY



TIE CHECK	TIE CHECK
7-26-76	7-13-79
G. ADAMS	D. STEPHENS
S. BRIEN	D. STEPHENS
J. STEPHENS	P. ROSS

CENTER OF SEC. 26 T.33, R.25

FOUND AND TIED GRANITE MONU.
FLUSH WITH BLACKTOP

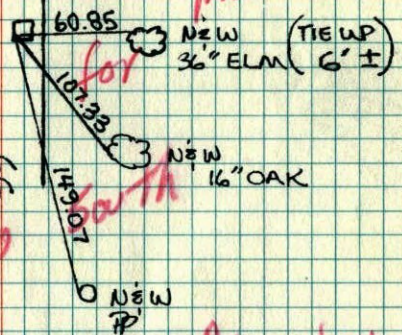
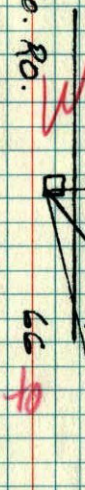


65° * 14

5-14-75

H. LARSON
B. GUETZKO

All Ties
Co. Rd.
Wrong
Ave
May be
1/4 mile to



R.W. A.
from Leo Shaw
10/13/74