

CERTIFICATE OF LOCATION OF GOVERNMENT CORNER
 County of Anoka State of Minnesota

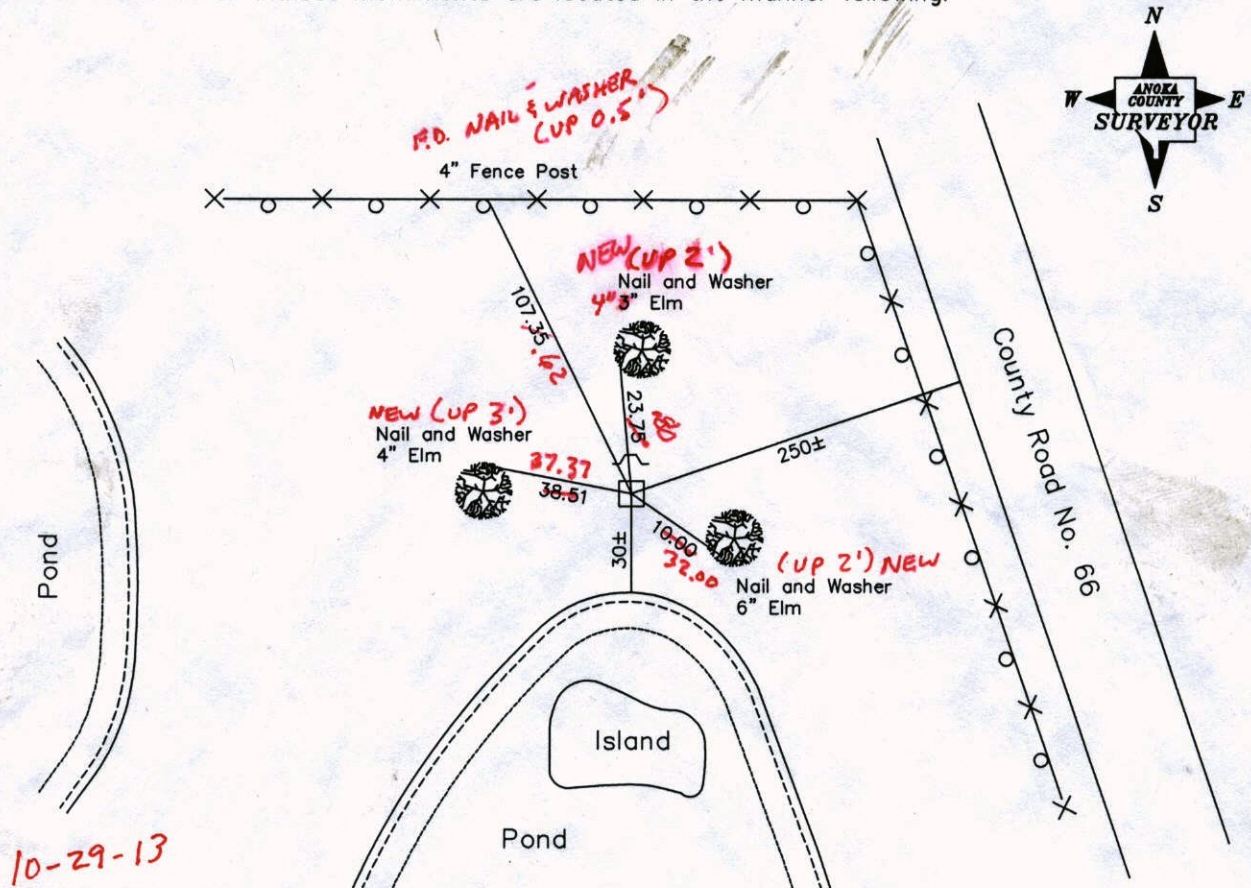
Witness Corner of Sec. 26, Township 33, Range 25

On the West Line of the Southeast Quarter of Sec. 26
 I hereby certify that on the 14th day of May, 1975, I found the described corner which was

evidenced by a granite monument

and I further certify that to perpetuate the location of said corner, I did, at the exact location thereof, place a permanent marker consisting of a granite monument with a sign and post on the north side (Note: the South 1/4 corner falls in pond)

which reference or witness monuments are located in the manner following:



10-29-13
 BK-SS
 TAPED

Revised date

| |
|---------|
| 7-13-79 |
| 8-10-82 |
| 9-7-88 |
| 7-12-94 |
| 2-25-03 |

N.A.D. 1983 Co-ordinates
 (1996 Adjustment)

| County Project Co-ordinates | |
|-----------------------------|-------------|
| Northing | 201900.6941 |
| Easting | 460807.3398 |

| State Plane Co-ordinates | |
|--------------------------|-------|
| Y | _____ |
| X | _____ |

Date 2-25-03

CERTIFICATE OF LOCATION OF GOVERNMENT CORNER

County of Anoka State of Minnesota

Witness Corner of Sec. 26, Township 33, Range 25

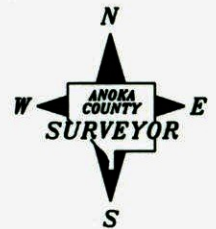
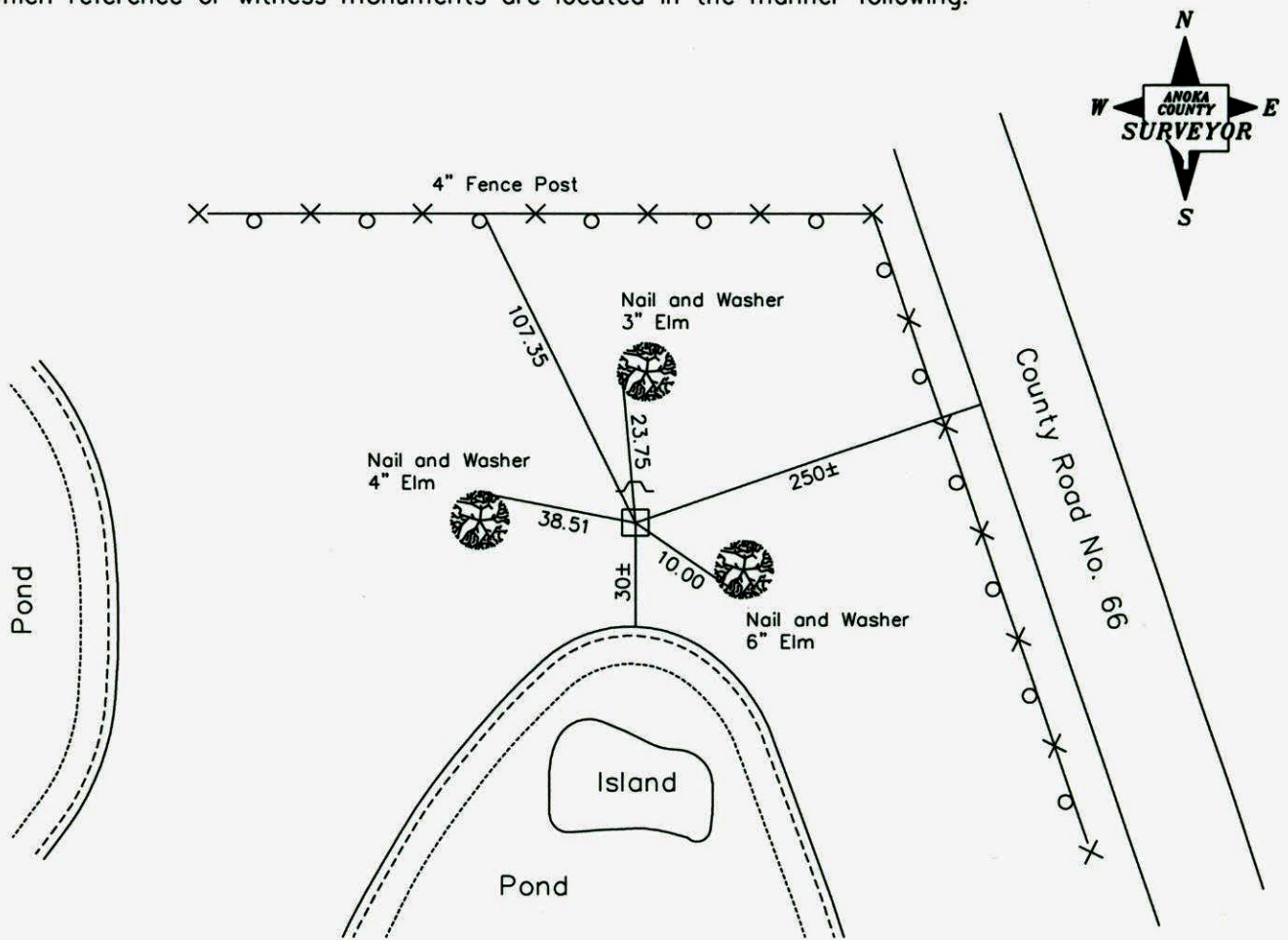
On the West Line of the Southeast Quarter of Sec. 26

I hereby certify that on the 14th day of May, 1975, I found the described corner which was

evidenced by a granite monument

and I further certify that to perpetuate the location of said corner, I did, at the exact location thereof, place a permanent marker consisting of a granite monument with a sign and post on the north side (Note: the South 1/4 corner falls in pond)

which reference or witness monuments are located in the manner following:



| Revised date |
|--------------|
| 7-13-79 |
| 8-10-82 |
| 9-7-88 |
| 7-12-94 |
| 2-25-03 |

N.A.D. 1983 Co-ordinates
(1996 Adjustment)

| County Project Co-ordinates | State Plane Co-ordinates |
|-----------------------------|-------------------------------------------|
| Northing <u>201900.6941</u> | Y <u> </u> |
| Easting <u>460807.3398</u> | X <u> </u> |

Date 2-25-03

CERTIFICATE OF LOCATION OF GOVERNMENT CORNER

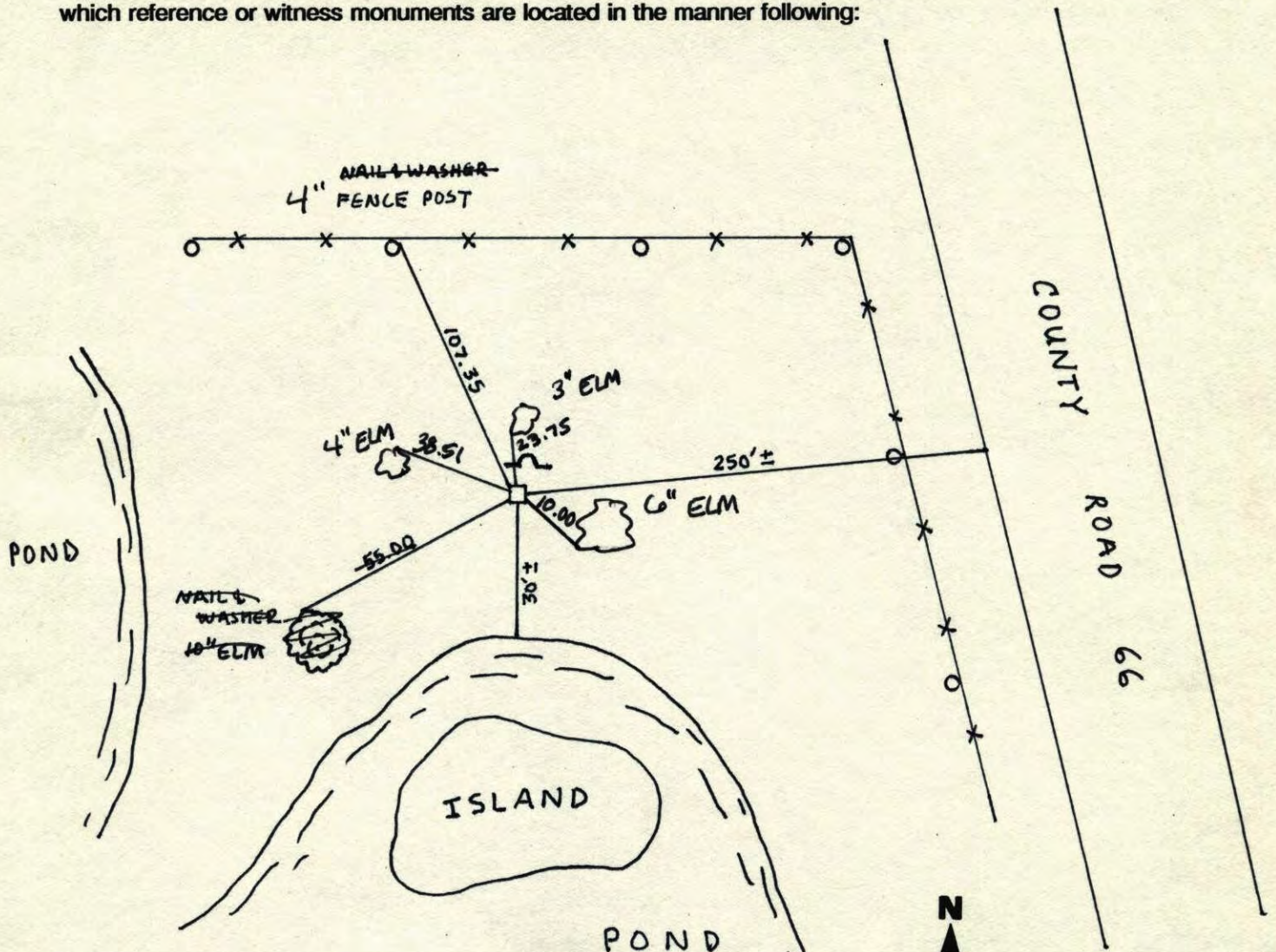
WITNESS CORNER County of Anoka State of Minnesota

ON THE WEST LINE
OF THE SOUTHEAST $\frac{1}{4}$ Corner of Sec. 26 Township 33 Range 25

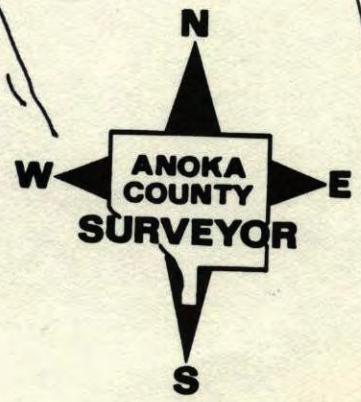
I hereby certify that on the 14 day of MAY, 19 75, I found the described corner which was evidenced by GRANITE MONUMENT

and I further certify that to perpetuate the location of said corner, I did, at the exact location thereof, place a permanent marker consisting of SAME WITH SIGN AND POST ON THE NORTH SIDE (SOUTH $\frac{1}{4}$ CORNER IN POND)

which reference or witness monuments are located in the manner following:



| Revised date | Revised date | Revised date |
|--------------|--------------|--------------|
| 7-13-79 | | |
| 8-10-82 | | |
| 9-7-88 | | |
| 7-12-94 | | |
| 2-25-03 | | |
| | | |
| | | |

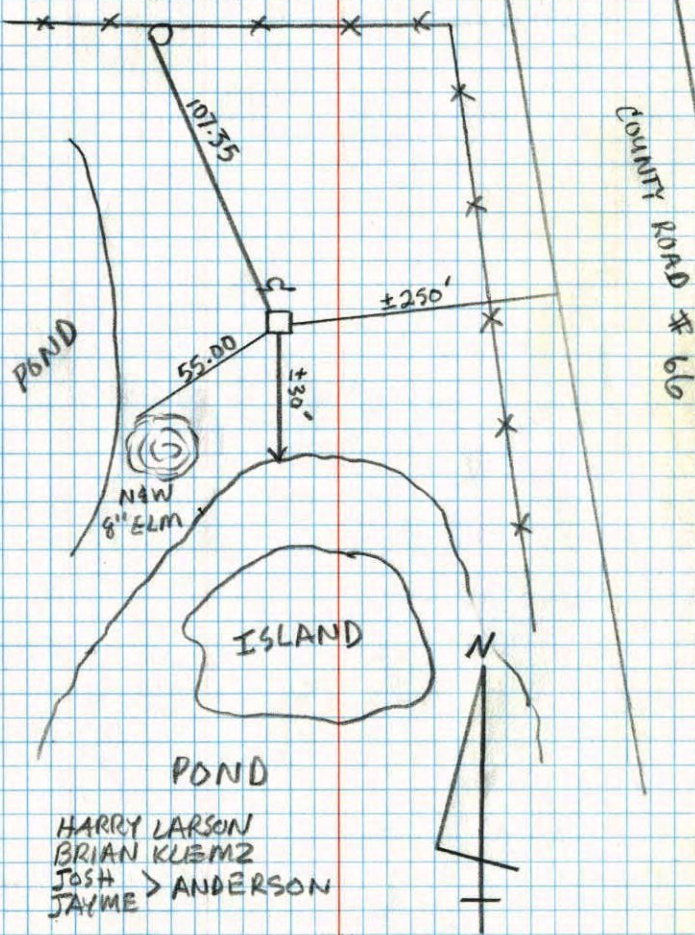


WITNESS CORNER
ON W. LINE OF
THE SE. 1/4

Sec. 26 Tw. 33 R. 25

RETIÉ GRANITE
MONUMENT

NAIL & WASHER
FENCE POST

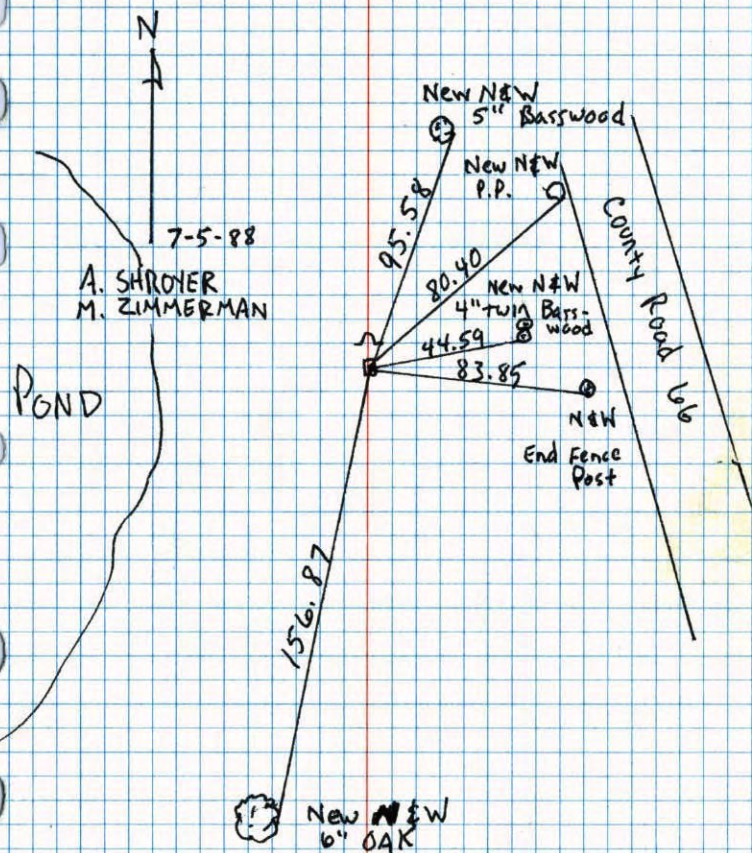


HARRY LARSON
BRIAN KLEMM
JOSH ANDERSON
JAYME

7-12-94

WITNESS CORNER ON SOUTH LINE SEC. 26 T. 33 R. 25

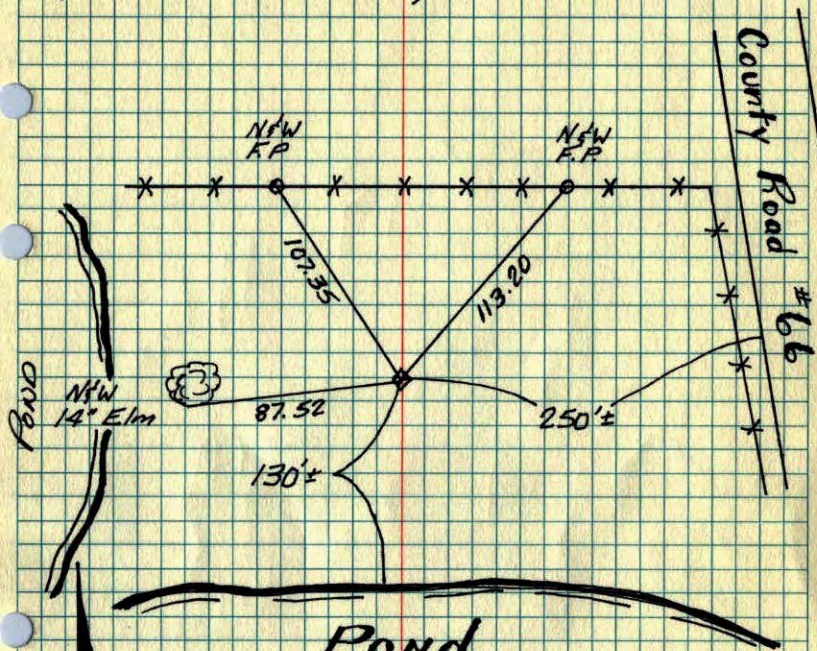
Retied ~~5\"/>~~



New N&W
6\"/>

W.C. On West Line of SE $\frac{1}{4}$ of
Sec 26-T33-R25

Found And Tied Granite Monument Flush.
(5 $\frac{1}{4}$ Cor. is in Pond.)



5-14-75
H. Larson
R. Guetzko

TIE CHECK
7-12-79
B. STEPHENS
D. STEPHENS
P. ROSS

TIE CHECK
7-28-76
G. ADAMS
S. BRYEN
J. STEPHENS

TIE CHECK
8-10-82
P. ROSS
P. HORNBY

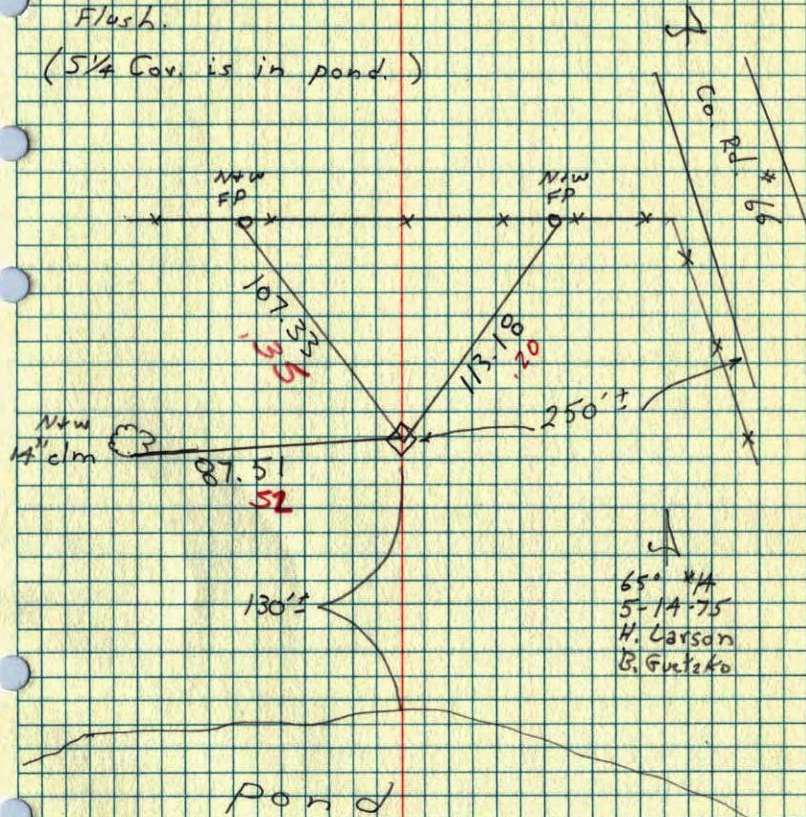
TEMPERATURE CORRECTED
AND HORIZONTALLY
TAPED MEASUREMENTS

ROLAND W. ANDERSON
COUNTY SURVEYOR
ANOKA COUNTY, MINNESOTA

WC on West Line of SE $\frac{1}{4}$ of
Sec. 26 T33 R25

Found and tied granite monument
Flush.

(5 $\frac{1}{4}$ Cor. is in pond.)



65° *14
5-14-75
H. Larson
R. Guetzko