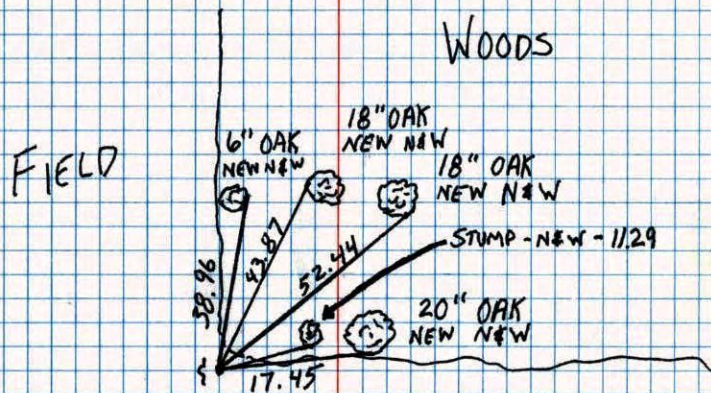


EAST 1/4 CORNER Sec. 25 T. 33 R. 25

Retied Cast Iron monument.



N

A. SHROYER  
M. ZIMMERMAN  
7-6-89

FIELD

E 1/4 Cor. Sec. 25-33-25

Found 4"x4" Cast Iron Monument up 0.5'  
Monument broken off 1 1/2 long. 1 1/2" Iron Pipe  
on NE side. Removed rest of concrete and  
Set Cast Iron Monument flush from ties.  
Steel sign post on West side.

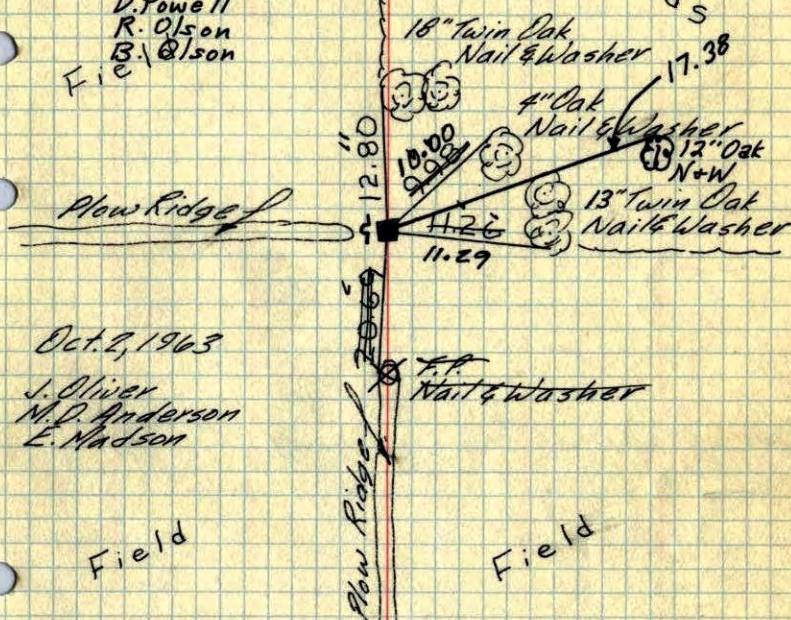
July 25, 1969

D. Powell

R. Olson

B. Olson

Field



Oct. 2, 1963

J. Oliver

M. D. Anderson

E. Nadson

Field

Field

Tie check  
Aug. 17, 1965  
M. D. Anderson  
J. Dunlop

TIE CHECK  
7-28-76  
G. ADAMS  
S. BRIEN  
J. STEPHENS

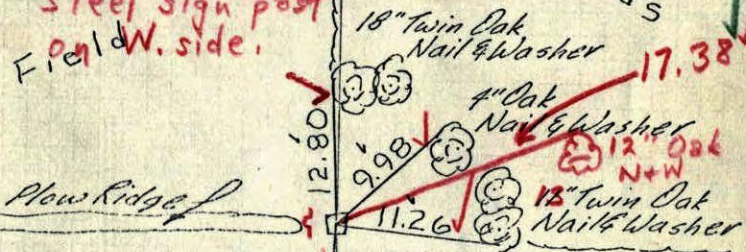
TIE CHECK  
7-25-79  
B. STEPHENS  
D. STEPHENS  
P. ROSS  
TIE CHECK  
8-9-82  
P. ROSS  
P. HORNBY

Tie check  
Aug. 19, 1973  
B. Olson  
D. Brian  
D. F.

TEMPERATURE CORRECTED ROLAND W. ANDERSON  
AND HORIZONTALLY COUNTY SURVEYOR  
TAPED MEASUREMENTS ANOKA COUNTY, MINNESOTA

47  
E 1/4 Cor. Sec. 25-33-25

Found 4"x4" Conc. Monument up 0.5'  
Conc. broken off 1'± long, 1 1/4" I.P.  
S on NE side. Removed rest of conc.  
and set C.I. Mon. flush. from ties  
Steel sign post  
Field W. side.



Oct. 2, 1963

J. Oliver  
M.D. Anderson  
E. Madson

Field

Tie check  
Aug. 17, 1965  
M.D. Anderson  
J. Dunlop

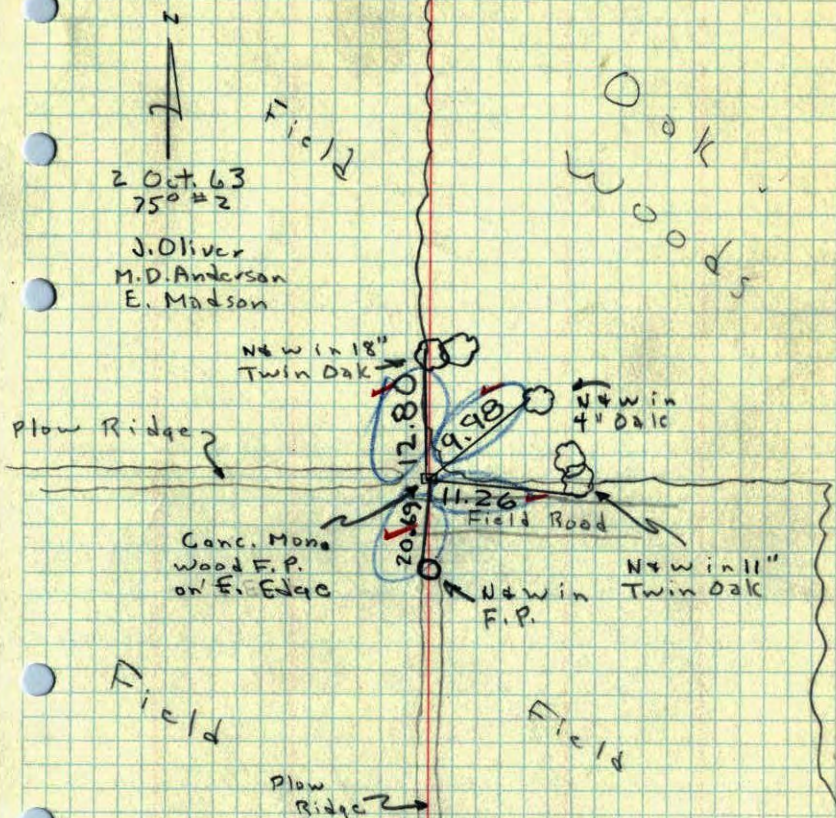
TEMPERATURE CORRECTED  
AND HORIZONTALLY  
TAPED MEASUREMENTS

ROLAND W. ANDERSON  
COUNTY SURVEYOR  
ANOKA COUNTY, MINNESOTA

7/25/69  
#5-800  
D. Powell  
R. Olson  
B. Olson

E 1/4 Cor. of Sec. 25, T33, R 25

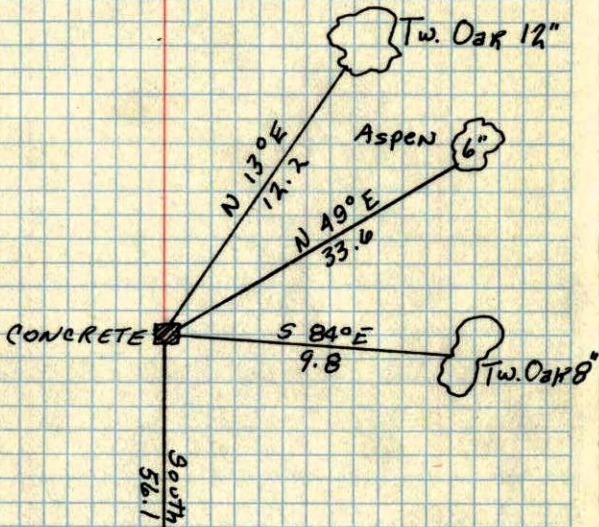
Found 4" Sq. Conc. Mon. Sticking up 0.5'



E/4 CORNER OF SEC 25, T33, R25

CONC. MON.

ZF ✓



Retied  
Oct. 2, 1963  
W.D.A.

Aug 11, 1945  
CARTWRIGHT