

CERTIFICATE OF LOCATION OF GOVERNMENT CORNER

County of Anoka

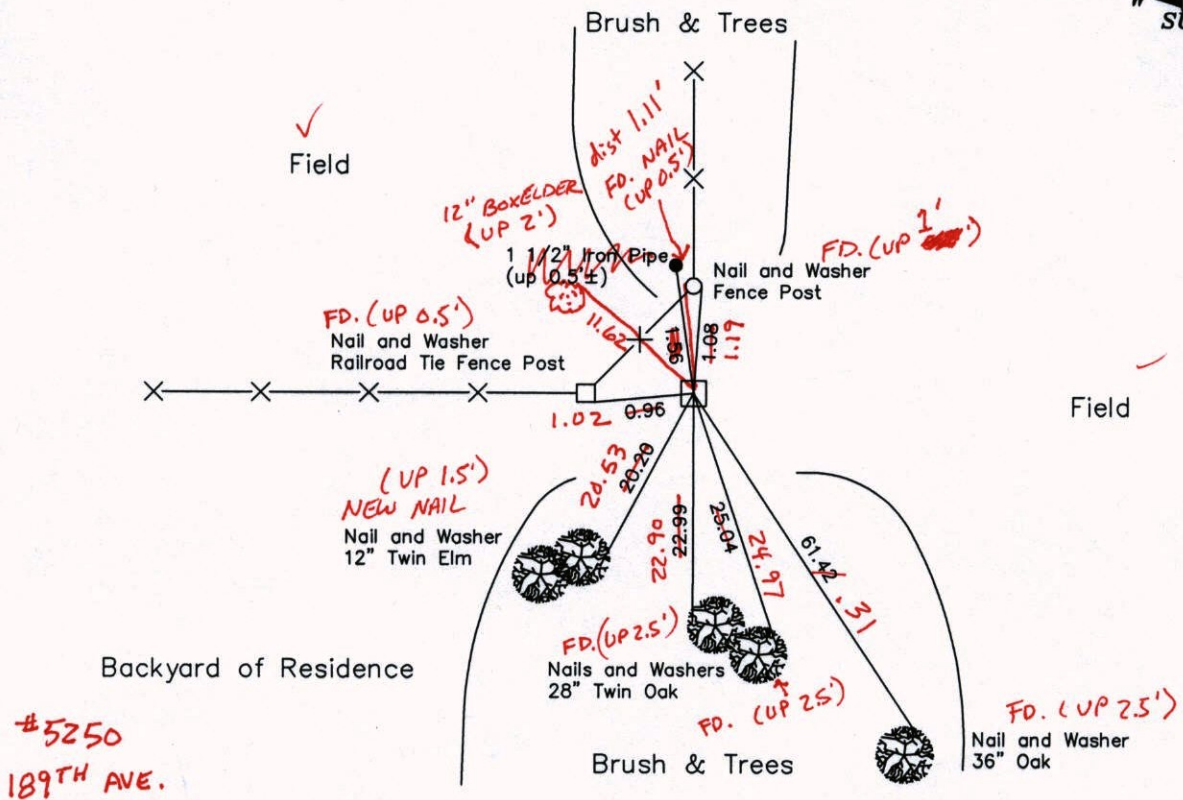
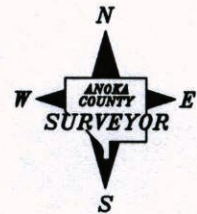
State of Minnesota

South 1/4 Corner of Sec. 25, Township 33, Range 25

I hereby certify that on the 3rd day of December, 1963, I found the described corner which was evidenced by a 4 inch square concrete monument (no visible center point)

and I further certify that to perpetuate the location of said corner, I did, at the exact location thereof, place a permanent marker consisting of a 4 inch square concrete monument (MON. DOWN 0.3'±)

which reference or witness monuments are located in the manner following:



Backyard of Residence

#5250
189TH AVE.

Revised date

7-3-85
9-2-88
7-18-94
2-24-03

11-15-13
JS-SS-SK
TAPED

N.A.D. 1983 Co-ordinates
(1996 Adjustment)

County Project Co-ordinates		State Plane Co-ordinates	
Northing	201445.6336	Y	_____
Easting	466030.3775	X	_____

Date 2-24-03

CERTIFICATE OF LOCATION OF GOVERNMENT CORNER

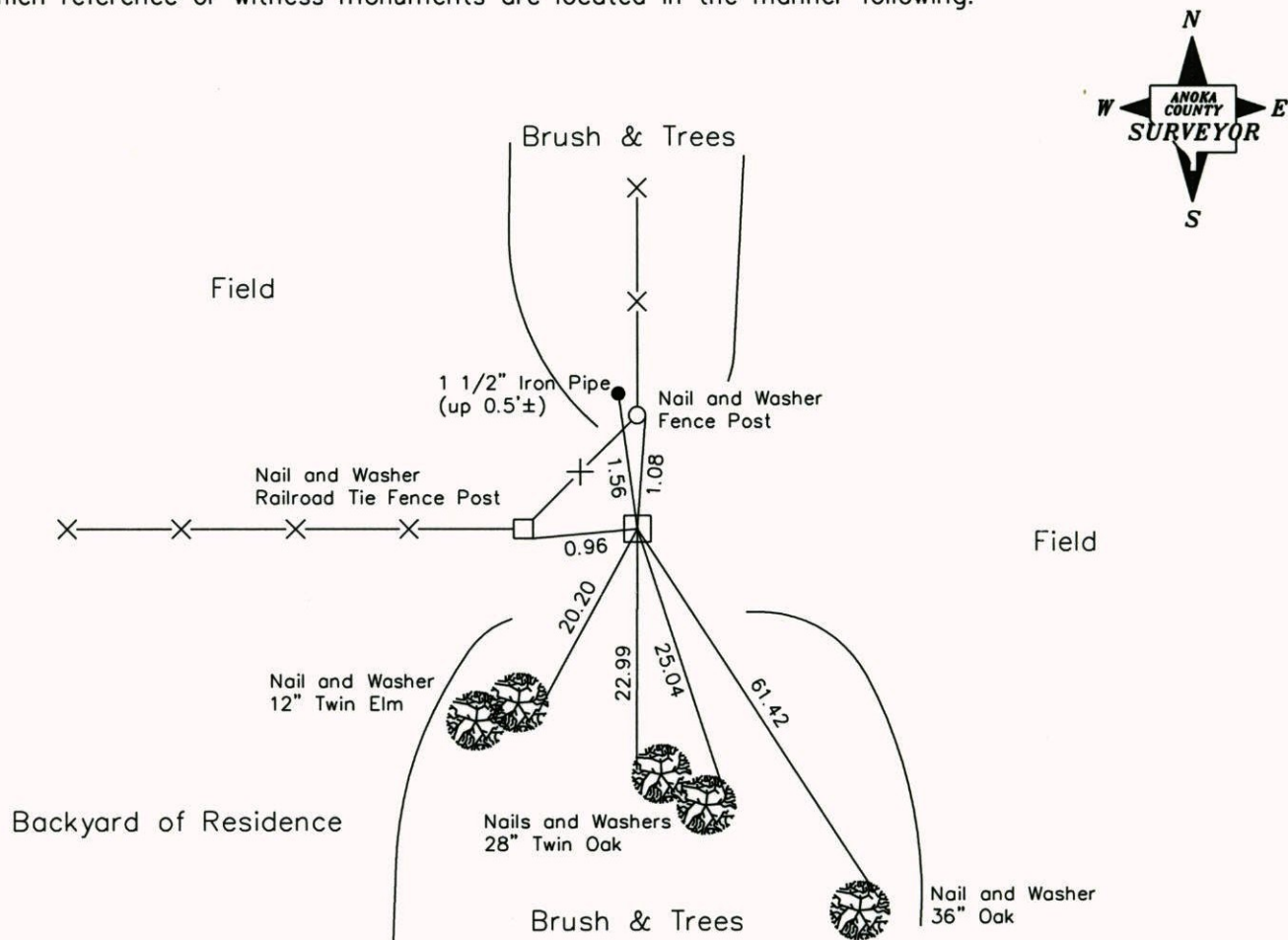
County of Anoka State of Minnesota

South 1/4 Corner of Sec. 25, Township 33, Range 25

I hereby certify that on the 3rd day of December, 1963, I found the described corner which was evidenced by a 4 inch square concrete monument (no visible center point)

and I further certify that to perpetuate the location of said corner, I did, at the exact location thereof, place a permanent marker consisting of a 4 inch square concrete monument

which reference or witness monuments are located in the manner following:



Revised date

7-3-85
9-2-88
7-18-94
2-24-03

N.A.D. 1983 Co-ordinates
(1996 Adjustment)

County Project Co-ordinates		State Plane Co-ordinates	
Northing	<u>201445.6336</u>	Y	_____
Easting	<u>466030.3775</u>	X	_____

Date 2-24-03

CERTIFICATE OF LOCATION OF GOVERNMENT CORNER

County of Anoka

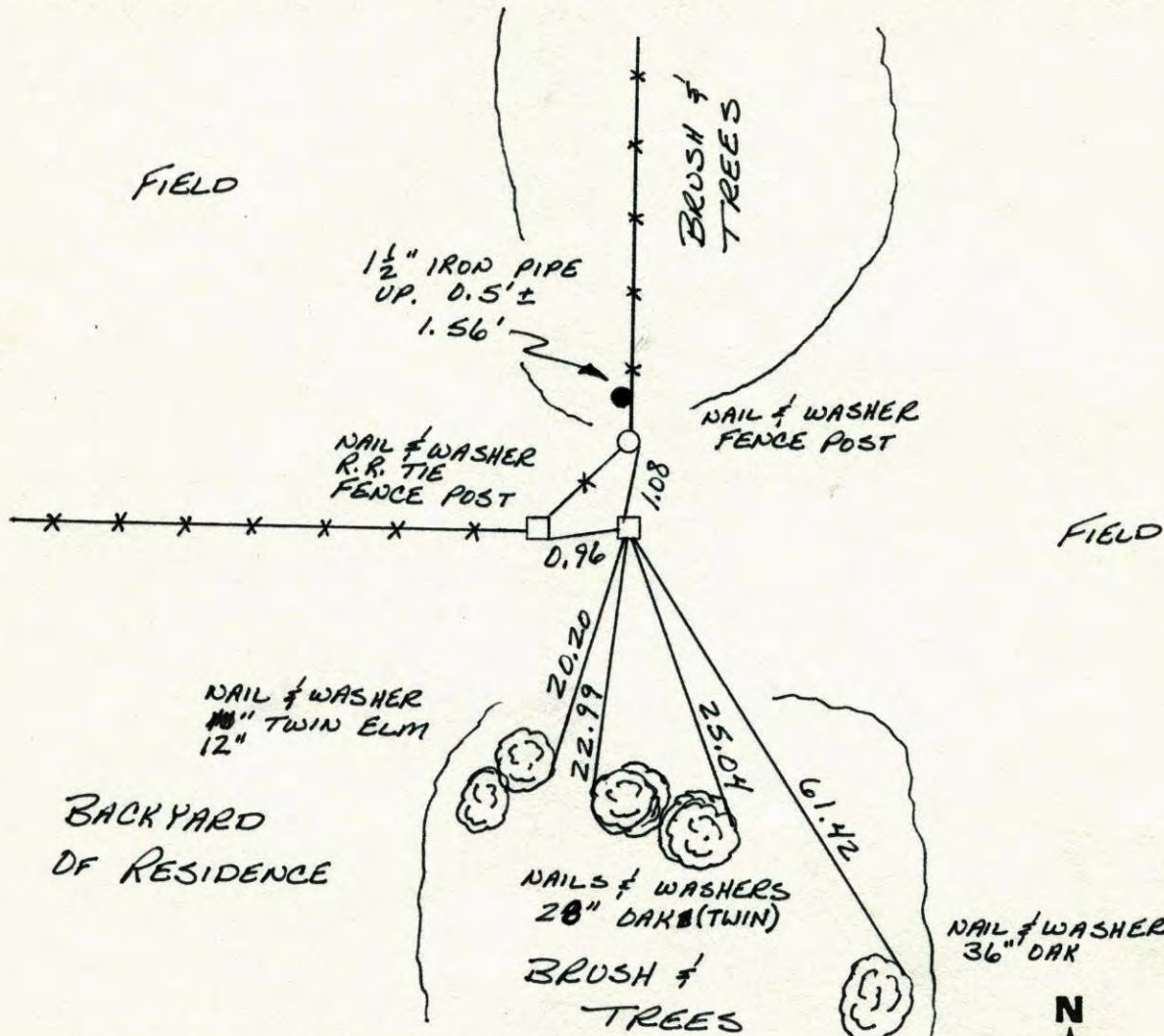
State of Minnesota

SOUTH 1/4 Corner of Sec. 25 Township 33 Range 25

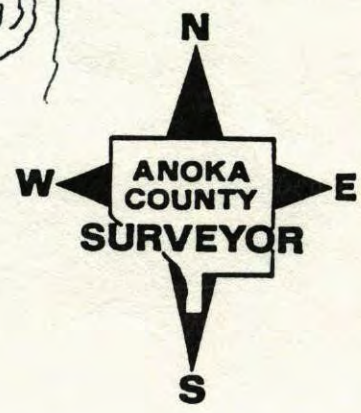
I hereby certify that on the 3 day of DECEMBER, 1963, I found the described corner which was evidenced by 4" SQUARE CONCRETE MONUMENT
No Visible Centerpoint

and I further certify that to perpetuate the location of said corner, I did, at the exact location thereof, place a permanent marker consisting of 4" SQUARE CONCRETE MONUMENT

which reference or witness monuments are located in the manner following:

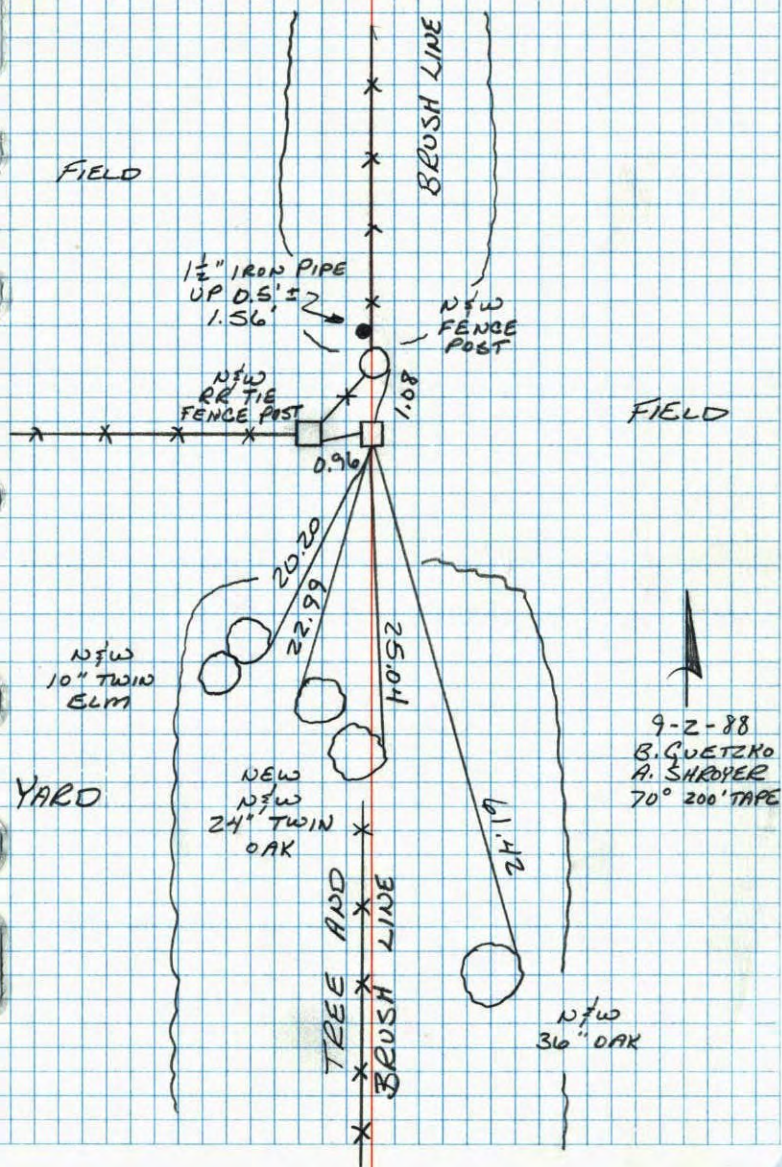


Revised date	Revised date	Revised date
7-3-85		
9-2-88		
7-18-94		
2-24-03		

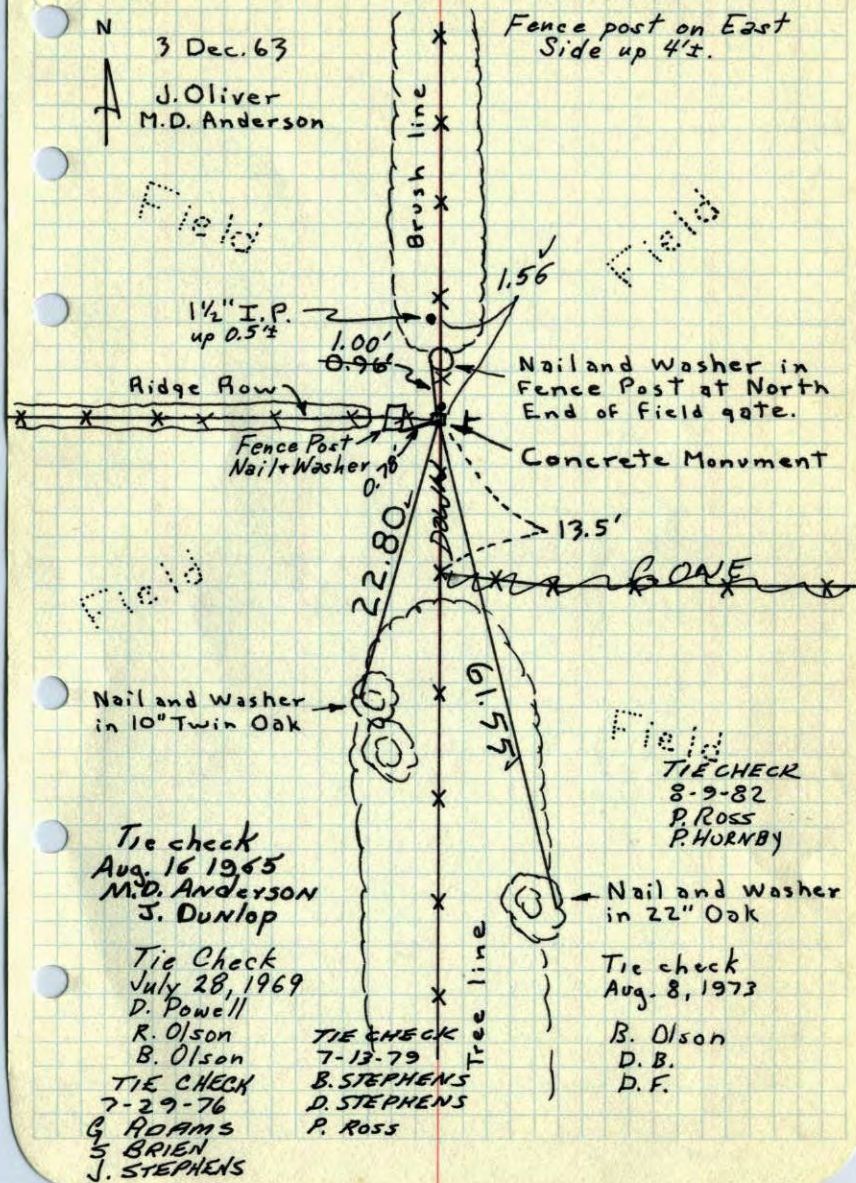


S¹/₄ CORNER SEC. 25 T33 R25

RETIED 4" SQUARE CONCRETE MONUMENT

S¹/₄ Cor. Sec. 25, T33, R25

Found 4" Sq. Concrete Monument down 0.2'.



45

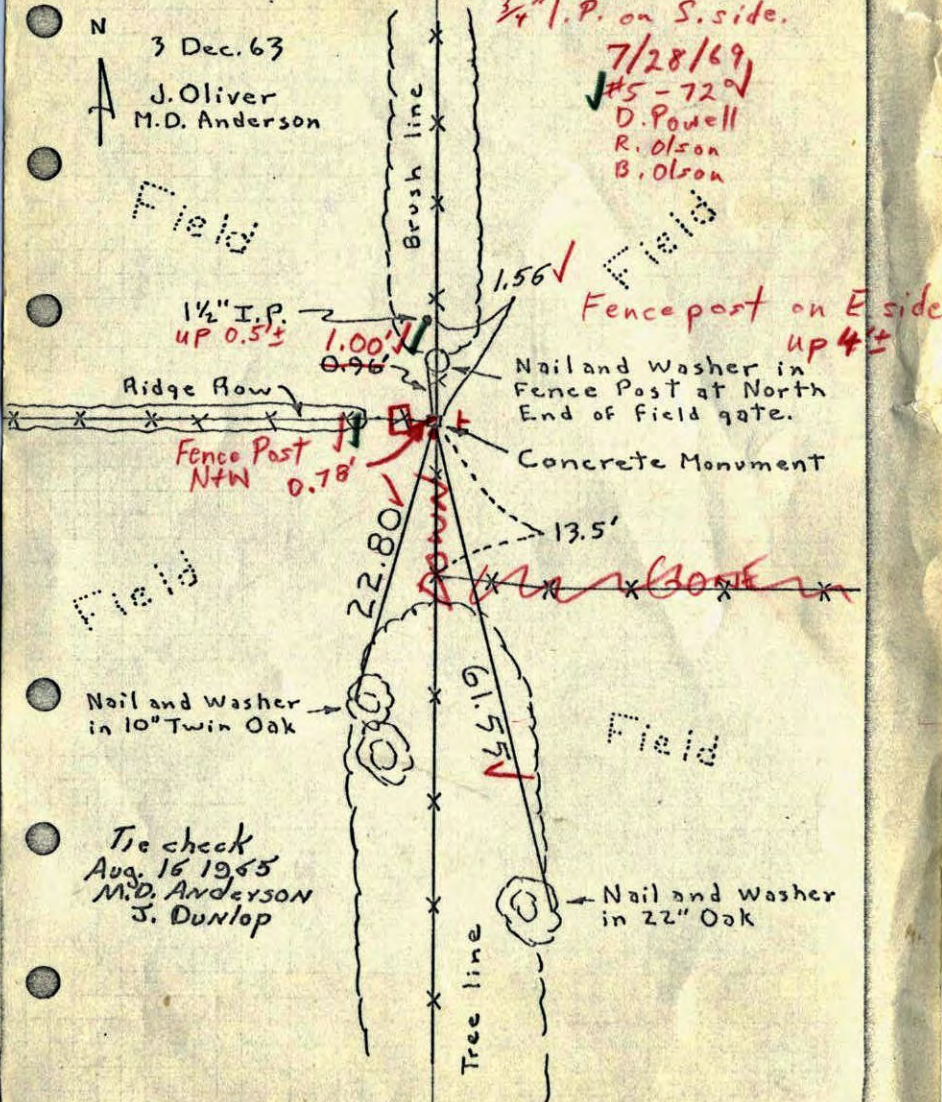
S 1/4 Cor. Sec. 25, T33, R25

Found 4" Sq. Concrete Monument down 0.2'.

N 3 Dec. 63
J. Oliver
M.D. Anderson

3/4" I.P. on S. side.

7/28/69
#5-72
D. Powell
R. Olson
B. Olson



Nail and Washer in 10" Twin Oak

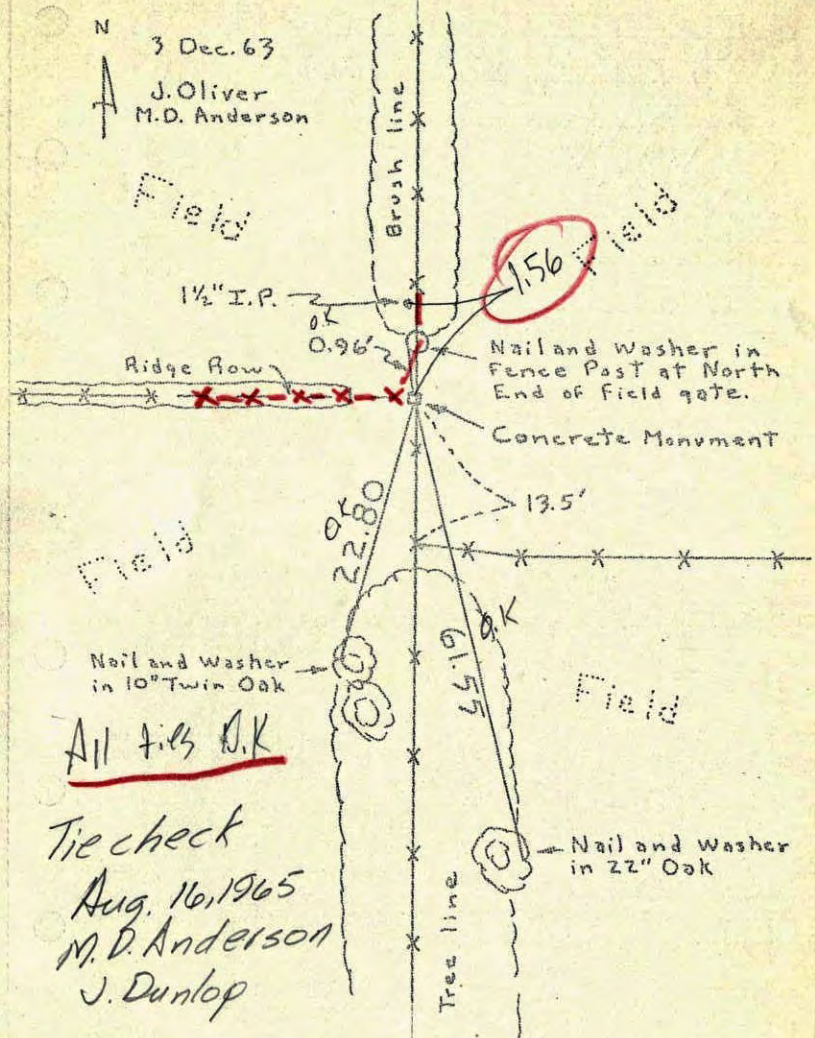
Tie check
Aug. 16, 1965
M.D. Anderson
J. Dunlop

Nail and Washer in 22" Oak

S 1/4 Cor. Sec. 25, T33, R25

Found 4" Sq. Concrete Monument down 0.2'.

N 3 Dec. 63
J. Oliver
M.D. Anderson



1.56

Nail and Washer in Fence Post at North End of field gate.

Concrete Monument

All ties O.K.

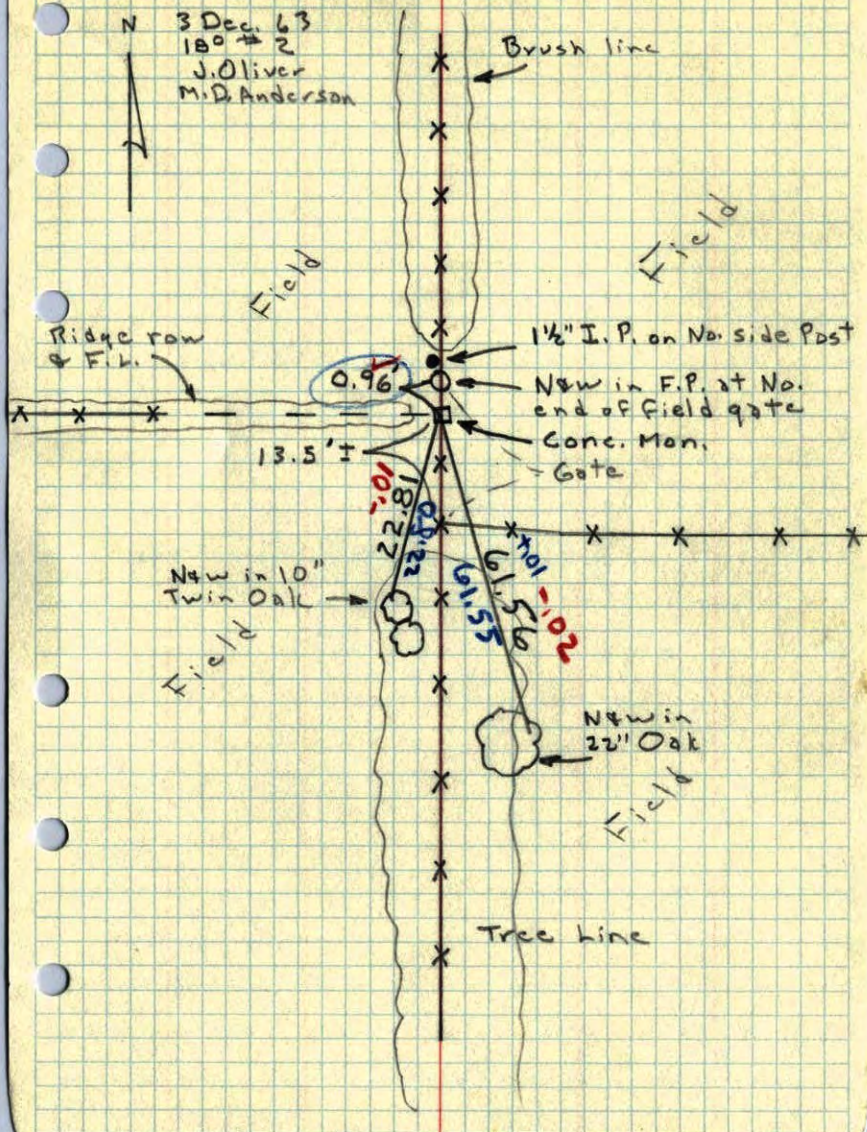
Tie check
Aug. 16, 1965
M.D. Anderson
J. Dunlop

Nail and Washer in 22" Oak

Entered
HL

S 1/4 Cor. Sec. 25, T33, R25

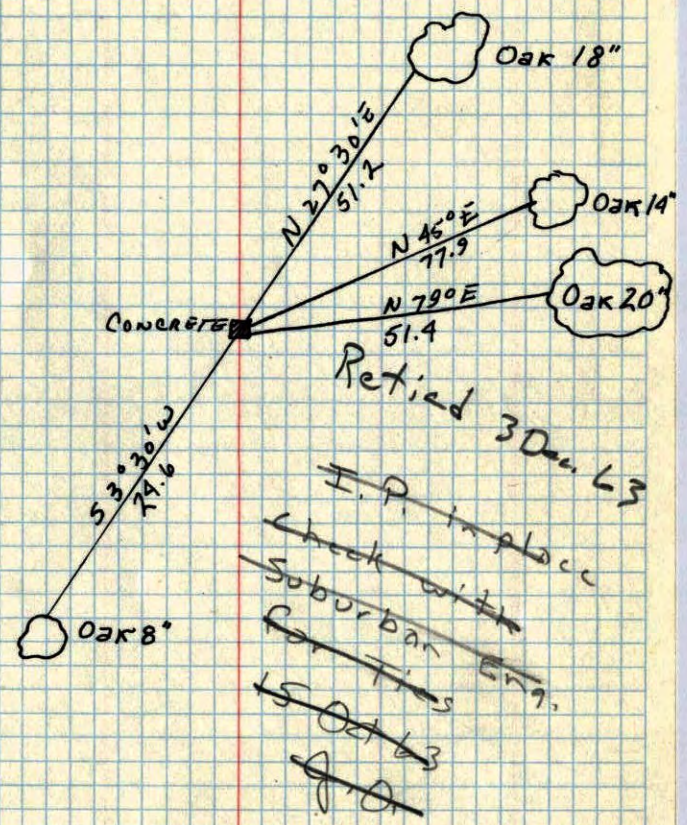
Found 4" Sq. Concrete Mon. down 0.2'.



28

S 1/4 CORNER OF SEC 25, T33, R25

CONC. MON.



Aug 13, 1945
CARTWRIGHT