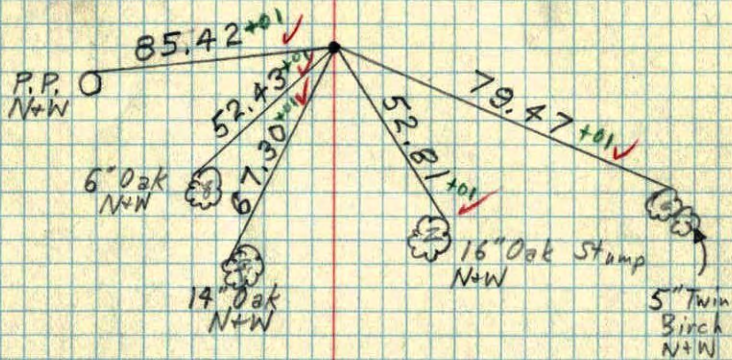


Center Sec. 31-T31-R22

Found 2 1/2" Iron Pipe down 0.6'± with 3/4" Pinched
Iron Pipe in center. Found from ties
by C.O. Georgi.

9/4/68
#6-65
D. Powell
R. Olson



Center of Sec. 31,

T 31, R22

Found 1 1/2" steel post
broken & leaning up 1.8'±
Found 2 1/2" Iron Pipe down
0.6'± with 3/4" Pinched

3 Nails in face

24" Oak

Good

305'
33.13

3 Nails in face

16" Oak

3 Nails in face

16" Oak

3 Nails in face

16" Oak

3 Nails in face

16" Oak

3 Nails in face

16" Oak

3 Nails in face

16" Oak

3 Nails in face

16" Oak

3 Nails in face

16" Oak

Iron Pipe

in

center

sticking

out of large

pipe 0.1'±

Could not

find any

granite

C. O. Georgi

July 1964

8/27/68

#6-75

D. Powell

R. Olson

P. Pieh

Center of Sec. 31,

T 31, R22

3 Nails in face

24" Oak

Good

305'
33.13

3 Nails in face

16" Oak

3 Nails in face

16" Oak

3 Nails in face

16" Oak

3 Nails in face

16" Oak

3 Nails in face

16" Oak

3 Nails in face

16" Oak

3 Nails in face

16" Oak

3 Nails in face

16" Oak

C. O. Georgi

July 1964