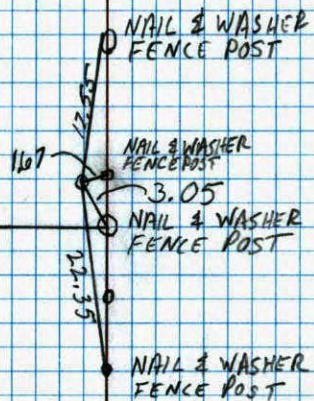


EAST-1/4 CORNER SEC. 13 T.33 R.25
 RETIED 1/2" IRON PIPE SET IN CONCRETE.



7-10-89
 A. SHROYER
 M. ZIMMERMAN

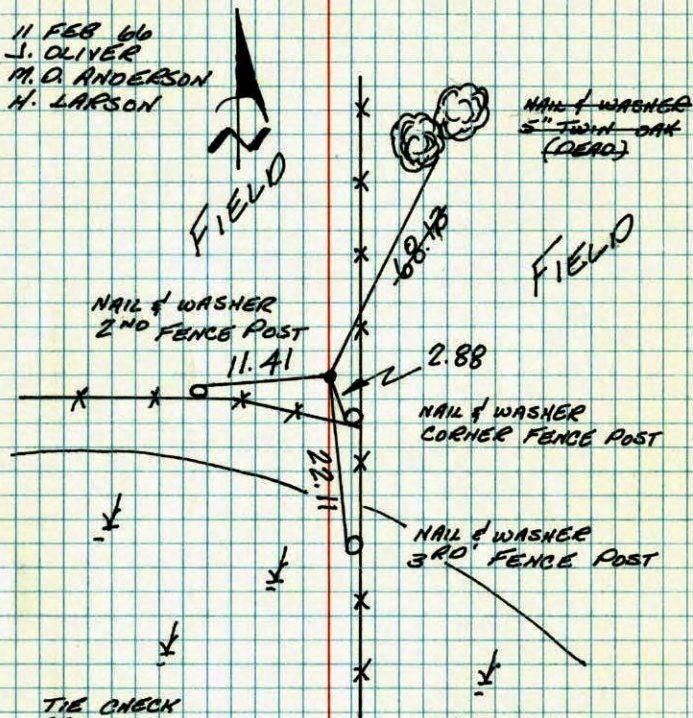
NO. 448

TELEPHONE

E 1/4 CORNER SECTION 13-T33-R25

FOUND 1/2" IRON PIPE, SET BY H.A. CARTWRIGHT,
 APPROXIMATELY 1960, DURING SURVEY FOR P.
 HERRBOLDT. ANCHED IRON PIPE SET IN
 CONCRETE WITH SPIKE ON SOUTH SIDE. "67"
 WRITTEN IN CONCRETE.

11 FEB 66
 J. OLIVER
 M. O. ANDERSON
 H. LARSON



TIE CHECK
 23 JUL 76
 G. ADAMS
 S. BRIEN
 J. STEPHENS

TIE CHECK
 8-5-82
 P. ROSS
 P. HORNBY

TIE CHECK
 7-18-79
 B. STEPHENS
 D. STEPHENS
 P. ROSS

TEMPERATURE CORRECTED
 AND HORIZONTALLY
 TAPED MEASUREMENTS

ROLAND W. ANDERSON
 COUNTY SURVEYOR
 ANOKA COUNTY, MINNESOTA

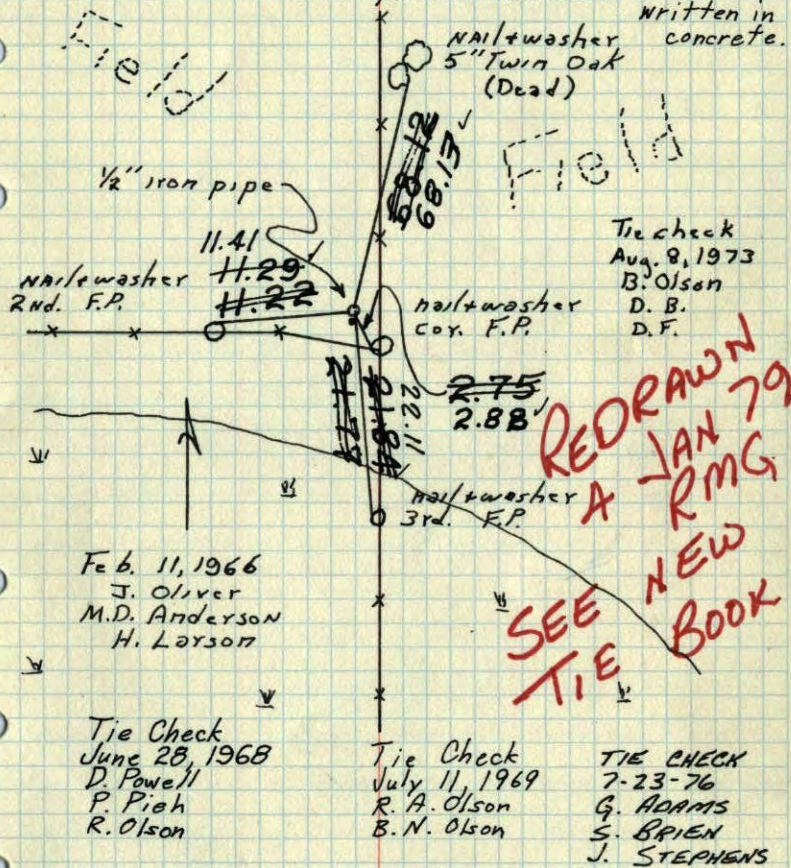
NO. 448

TELEPHONE

E 1/4 Cor. Sec. 13 T33 R25

Found 1/2" iron pipe, set by H.A.

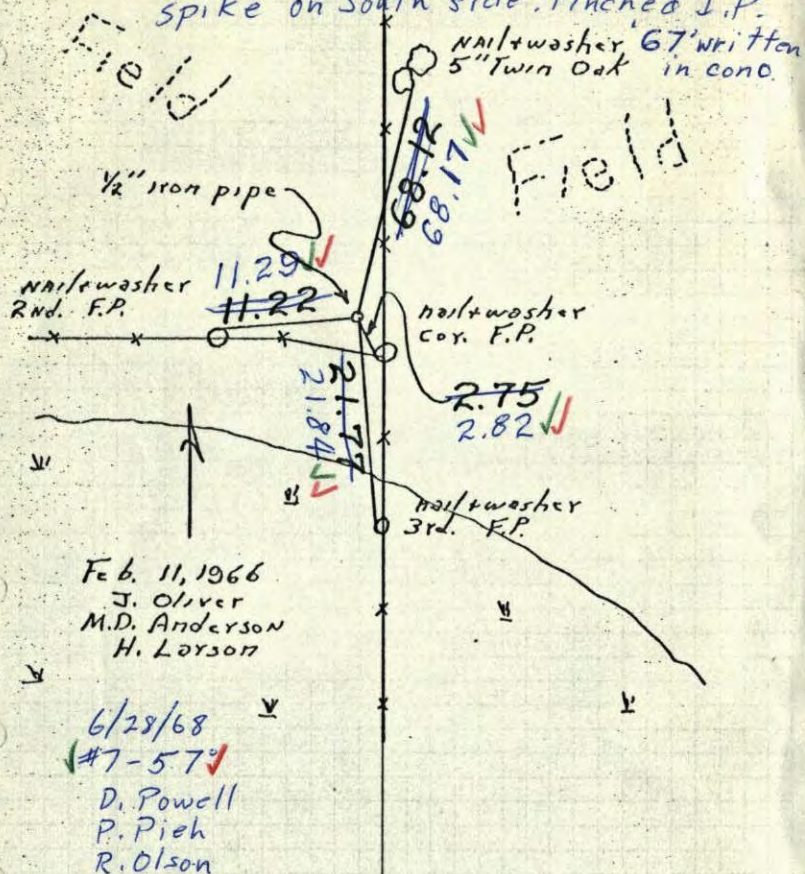
Cartwright approx. 1960, during survey for

P. Herxboldt. Pinched Iron Pipe set in concrete with spike on South side. ^{written in concrete.} "67"TEMPERATURE CORRECTED
AND HORIZONTALLY
TAPED MEASUREMENTSROLAND W. ANDERSON
COUNTY SURVEYOR
ANOKA COUNTY, MINNESOTA

E 1/4 Cor. Sec. 13 T33 R25

Found 1/2" iron pipe, set by H.A.

Cartwright approx. 1960, during survey for

P. Herxboldt. Set in Concrete with ~~spike~~ spike on South side. Pinched I.P. ^{written in concrete.} "67"TEMPERATURE CORRECTED
AND HORIZONTALLY
TAPED MEASUREMENTSROLAND W. ANDERSON
COUNTY SURVEYOR
ANOKA COUNTY, MINNESOTA

E 1/4 Cor. Sec. 13, T33, R25

Found 1/2" I.P. Set by H.A. Cartwright

Aprx. 1960 during Survey for P. Herrboldt.

Nails and washers in all tie posts and trees.

