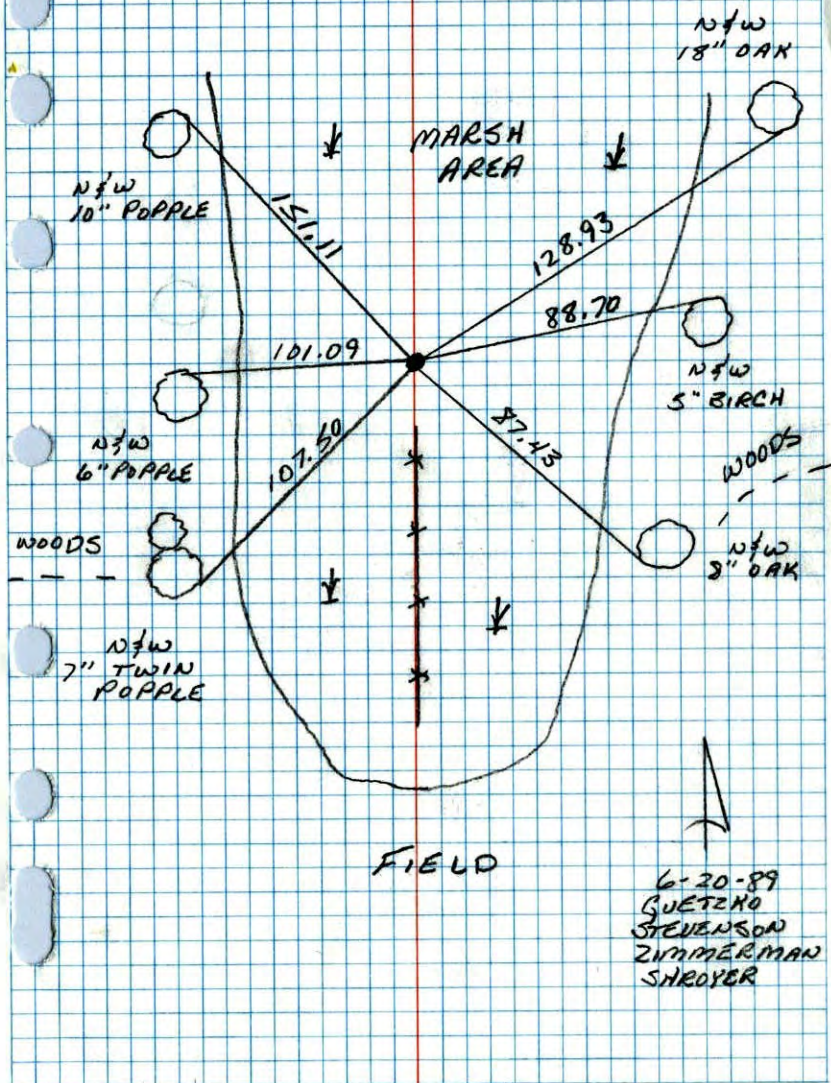


NORTHEAST CORNER SEC 1 T33 R25

RETIED AND REPLACED RED & WHITE IRON PIPE



NE Cor Sec 1 - T33 - R 25

8" X 8" Granite Mon.  
up 1"  
(loose)

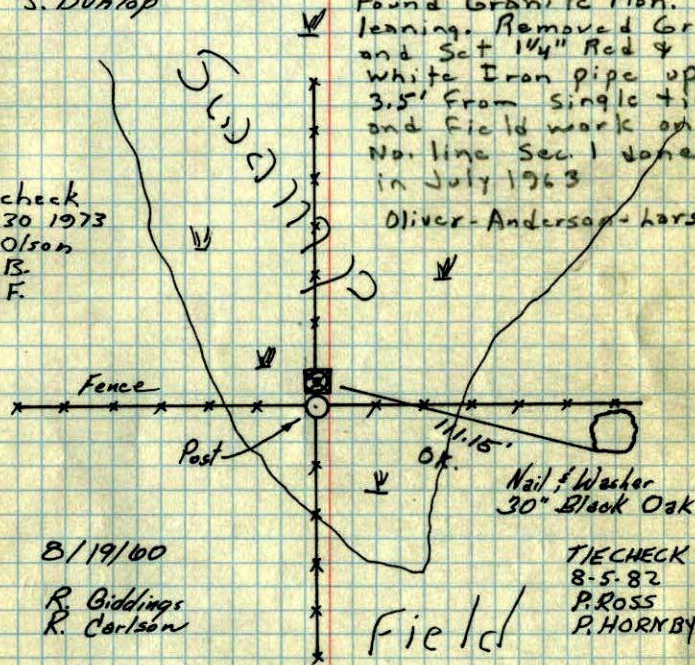
Tie check  
Aug. 12, 1965  
M.D. Anderson  
J. Dunlop

Dec. 27, 1965

Found Granite Mon.  
leaning. Removed Gran.  
and set 1 1/4" Red &  
White Iron pipe up  
3.5' from single tie  
and field work on  
No. line Sec. 1 done  
in July 1963

Oliver-Anderson-Hanson

Tie check  
July 30 1973  
B. Olson  
D. B.  
D. F.



TEMPERATURE CORRECTED  
AND HORIZONTALLY  
TAPED MEASUREMENTS

6/19/68

Wet  
Still there

7/13/69

Wet

TIE CHECK  
7-12-79  
WET  
PIPE AND TIE  
STILL THERE  
G. ADAMS  
D. ORAL  
S. BRIEN

ROLAND W. ANDERSON  
COUNTY SURVEYOR  
ANOKA COUNTY, MINNESOTA

N.E. Corn. Sec. 1, T. 33, R. 25  
(Burns)

Aug. 19, 1960

Temp. 75°

R. Giddings

R. Carlson

TC

8x8"

Granite 1' up (loose)

Fence  
XXXXXX XXXXX XXXXX  
Post

11.15'

30"

Black  
Oak

19/9/60