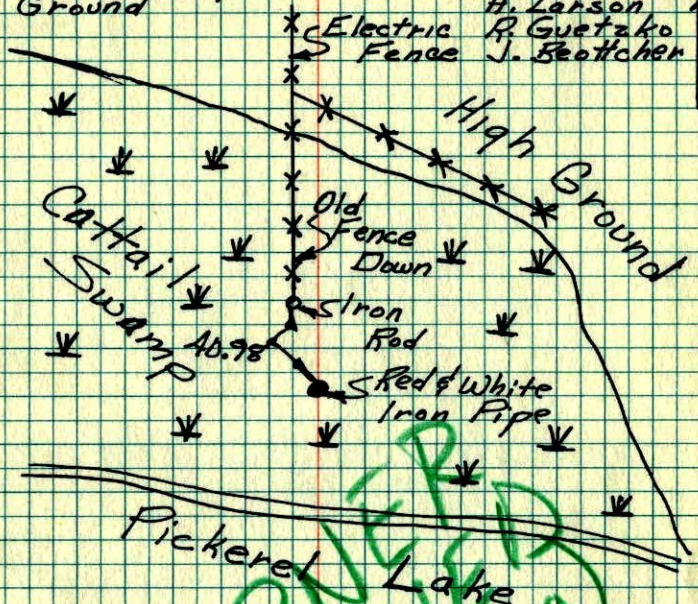


# S.W. Cor. Sec 15-T33-R25

Set Red & White Iron Pipe From Area Resurvey, With Sign. Up 3'±.

I.P. Is 375'± South Of High Ground

Temp 30°  
Tape #14  
Dec 6, 1974  
H. Larson  
J. Guetzko  
J. Beutcher



TIE CHECK  
2-23-76  
G. ADAMS  
S. BRIEN  
J. STEPHENS

NET 32

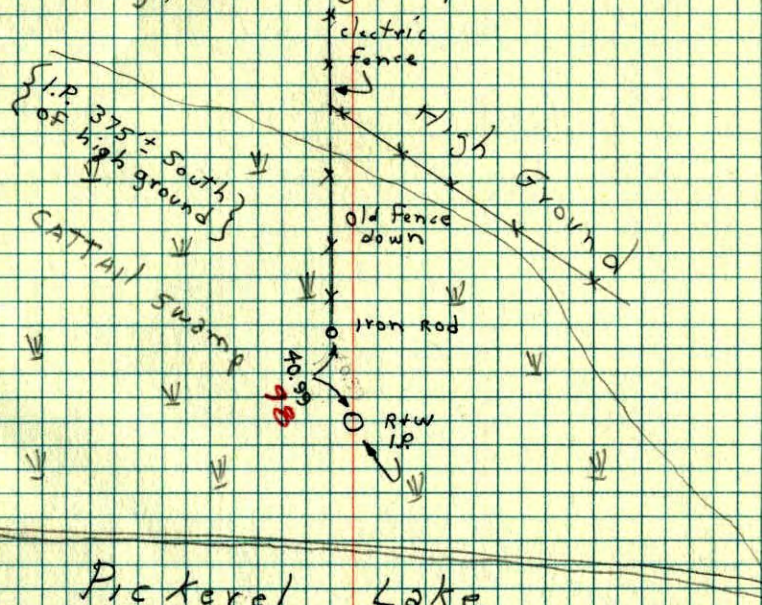
CORNER  
REMOVED  
(Floating bog)

ROLAND W. ANDERSON TEMPERATURE CORRECTED  
COUNTY SURVEYOR AND HORIZONTALLY  
ANOKA COUNTY, MINNESOTA TAPED MEASUREMENTS

Rmq

# S.W. Cor Sec. 15 T33 R25

Set Red & white iron pipe from area resurvey, with sign. up 3'±



30° #14  
12-6-74  
H. Larson  
J. Beutcher  
B. Guetzko