

# CERTIFICATE OF LOCATION OF GOVERNMENT CORNER

County of Anoka

State of Minnesota

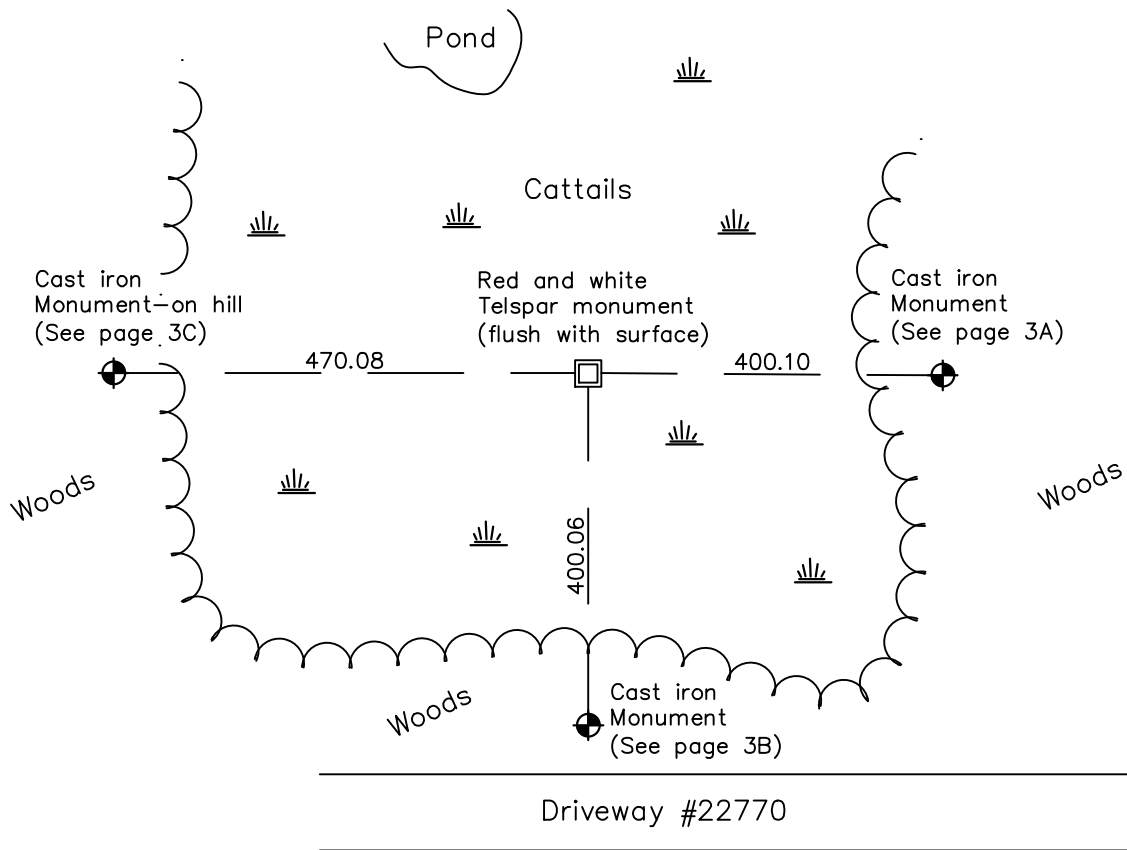
## Northeast Corner of Sec. 2 Township 33 Range 25

On the 21st day of January, 1965, the described corner was evidenced by area resurvey

and to perpetuate the location of said corner, at the exact location thereof, a permanent marker was placed consisting of a red and white 2" square Telspar monument

AND on the 17th day of January, 2018, said permanent marker was Not found

Updated reference ties are as shown below.



Revision Date

4/11/18

N.A.D. 1983 Coordinates  
(1996 Adjustment)

County Project Coordinates	
Northing	<u>not available</u>
Easting	<u>not available</u>
Date	<u>not available</u>

I hereby certify that this United States public land survey monument record is correct and complete to the best of my knowledge and belief.

*David Zieglmeier* Date 6/8/21

David M. Zieglmeier, Anoka County Surveyor  
Minnesota License Number 46179

# HISTORY OF GOVERNMENT CORNER

Page No. 3

County of Anoka

State of Minnesota

## Northeast Corner of Sec. 2 Township 33 Range 25

### **CORNER HISTORY:**

September 1849 - This corner was established by Theodore Conkey, Deputy Surveyor. Conkey marked the position by "set post corner sections 1, 2, 35 and 36" with three bearing trees marked as accessories.

January 21, 1965 - Set 3/4" x 12' red and white iron pipe up 3'± using area resurvey. Corner ties unavailable.

January 17, 1978 - Found red and white iron pipe and updated ties.

May 17, 1982 - Placed new 2" red and white iron pipe over old 3/4" iron pipe

July 10, 1985 - Found red and white iron pipe flush and updated ties.

July 7, 1989 - Found red and white iron pipe and updated ties.

March 27, 2013 - Found red and white 2" square steel Telspar monument flush. Located position by VRS GPS methods. Updated ties.

January 17, 2018 - Not found