

CERTIFICATE OF LOCATION OF GOVERNMENT CORNER

County of Anoka

State of Minnesota

Witness Corner of Sec. 2 Township 33 Range 25

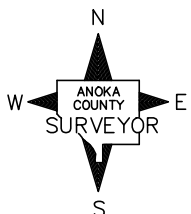
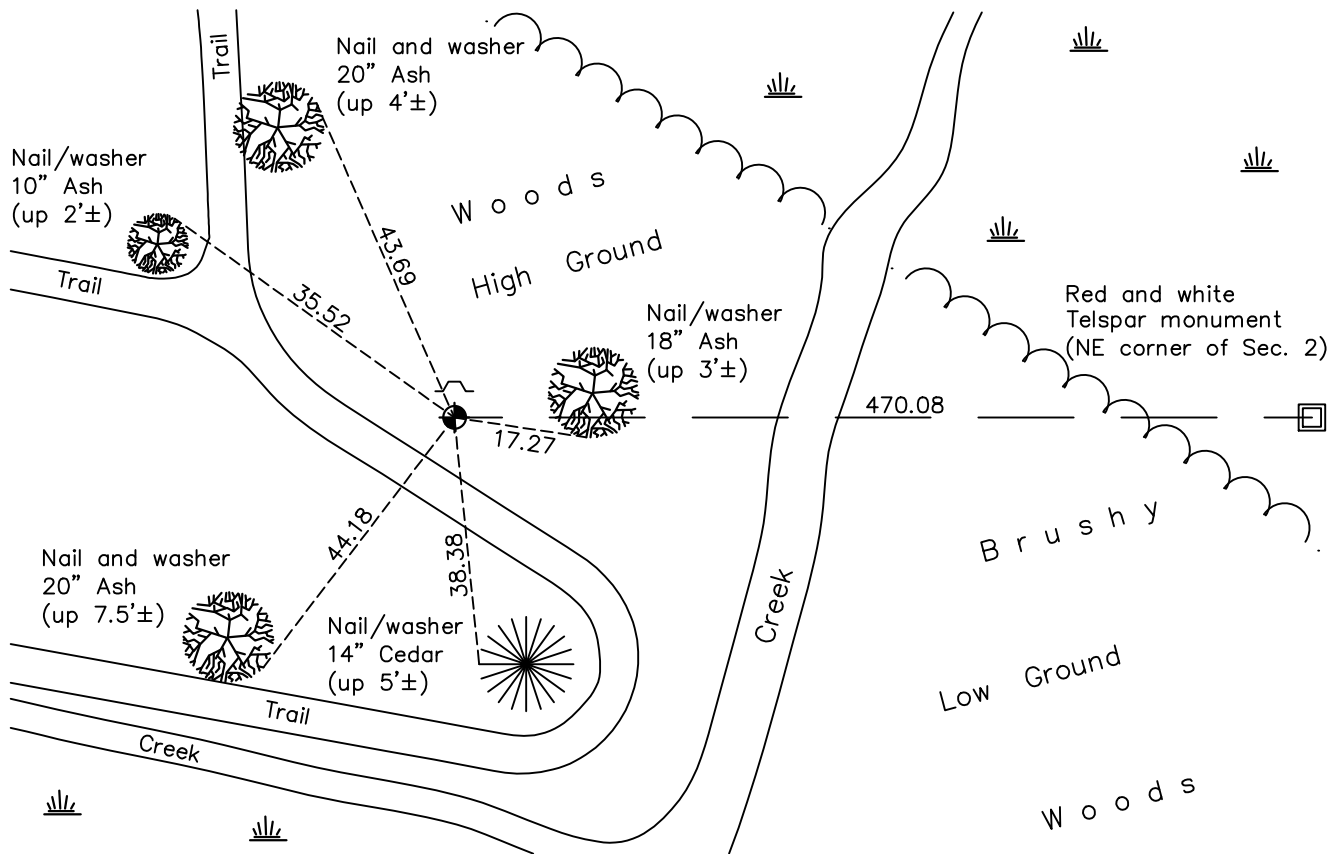
(On north line of section)

On the 3rd day of March, 2001, the described corner was evidenced by area resurvey

and to perpetuate the location of said corner, at the exact location thereof, a permanent marker was placed consisting of a cast iron monument with a sign and post on the north side

AND on the 17th day of January, 2018, said permanent marker was found flush and the ties were updated

Updated reference ties are as shown below.



Revision Date

4/11/18

N.A.D. 1983 Coordinates
(1996 Adjustment)

County Project Coordinates

Northing 227544.8620

Easting 462936.9270

Date 11/01/02

I hereby certify that this United States public land survey monument record is correct and complete to the best of my knowledge and belief.

David Zieglmeier Date 6/8/21

David M. Zieglmeier, Anoka County Surveyor

Minnesota License Number 46179

HISTORY OF GOVERNMENT CORNER

Page No. 3C

County of Anoka

State of Minnesota

Witness Corner of Sec. 2 Township 33 Range 25
(On north line of section)

CORNER HISTORY:

March 14, 2001 - Set cast iron monument 470 ft. west of red and white iron pipe using area resurvey. Established ties to monument. Set sign and post on the north side.

November 1, 2002 - Established NAD 1983 (1996 adj.) Anoka County project coordinates by static GPS methods.

March 28, 2013 - Found cast iron monument and updated ties.

January 17, 2018 - Found cast iron monument flush. Verified position by VRS GPS methods. Updated ties.