

# CERTIFICATE OF LOCATION OF GOVERNMENT CORNER

County of Anoka

State of Minnesota

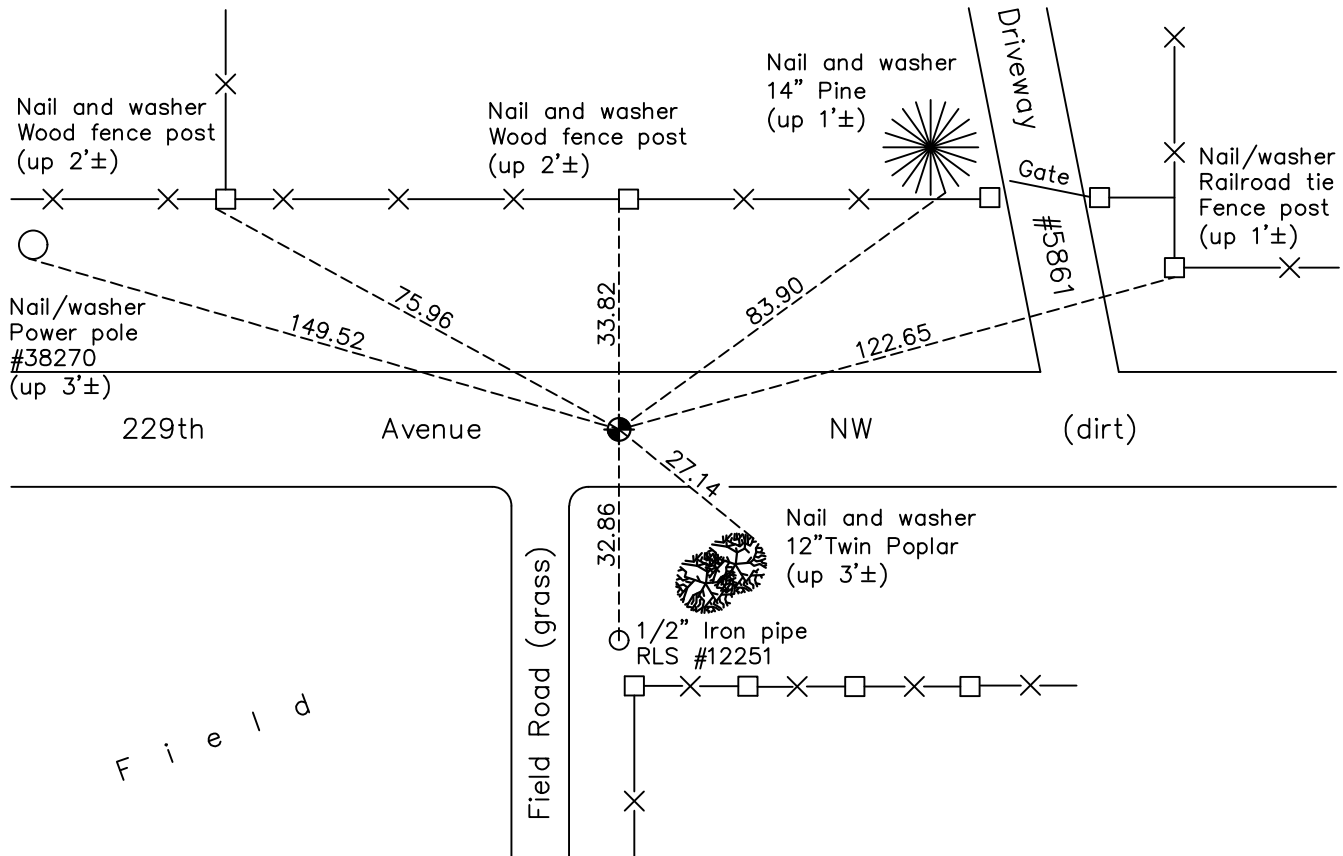
## North 1/4 Corner of Sec. 2 Township 33 Range 25

On the 23rd day of July, 1963, the described corner was evidenced by a well point

and to perpetuate the location of said corner, at the exact location thereof, a permanent marker was placed consisting of a cast iron monument down 0.6'±

AND on the 18th day of June, 2021, said permanent marker was found down 1'± and the ties were updated

Updated reference ties are as shown below.



Revision Date  
7/27/2021

N.A.D. 1983 Coordinates  
(1996 Adjustment)

County Project Coordinates	
Northing	<u>227540.5199</u>
Easting	<u>460774.9590</u>
Date	<u>1/17/01</u>

I hereby certify that this United States public land survey monument record is correct and complete to the best of my knowledge and belief.

*David Zieglmeier* Date 3/28/24

David M. Zieglmeier, Anoka County Surveyor  
Minnesota License Number 46179

# HISTORY OF GOVERNMENT CORNER

Page No. 4

County of Anoka

State of Minnesota

North 1/4 Corner of Sec. 2 Township 33 Range 25

## **CORNER HISTORY:**

September 1849 - This corner was established by Theodore Conkey, Deputy Surveyor. Conkey marked the position by "set post for quarter section corner" with two bearing trees marked as accessories.

July 23, 1963 - Found well point down 1' and replaced with a 3/4" x 2' iron pipe. Established ties to iron pipe.

August 12, 1965 - Found iron pipe and updated ties.

July 3, 1969 - Found iron pipe and updated ties.

July 18, 1969 - Found iron pipe and replaced with a cast iron monument down 0.6'±.

July 30, 1973 - Found cast iron monument and updated ties.

July 29, 1976 - Found cast iron monument and updated ties.

July 9, 1979 - Found cast iron monument and updated ties.

July 26, 1982 - Found cast iron monument and updated ties.

August 31, 1988 - Found cast iron monument and updated ties.

September 28, 1992 - Found cast iron monument broken and replaced with a new cast iron monument down 0.6"±. Updated ties.

June 30, 1994 - Found cast iron monument and updated ties.

January 17, 2001 - Found cast iron monument and updated ties. Established NAD 1983 (1996 adj.) Anoka County project coordinates by static GPS methods.

September 19, 2002 - Found cast iron monument and updated ties.

October 16, 2013 - Found cast iron monument down 1'± and updated ties.

August 23, 2017 - Found cast iron monument down 1'± and updated ties.

June 18, 2021 - Found cast iron monument down 1'±. Updated Ties. Verified position by VRS GPS method.