

CERTIFICATE OF LOCATION OF GOVERNMENT CORNER

County of Anoka

State of Minnesota

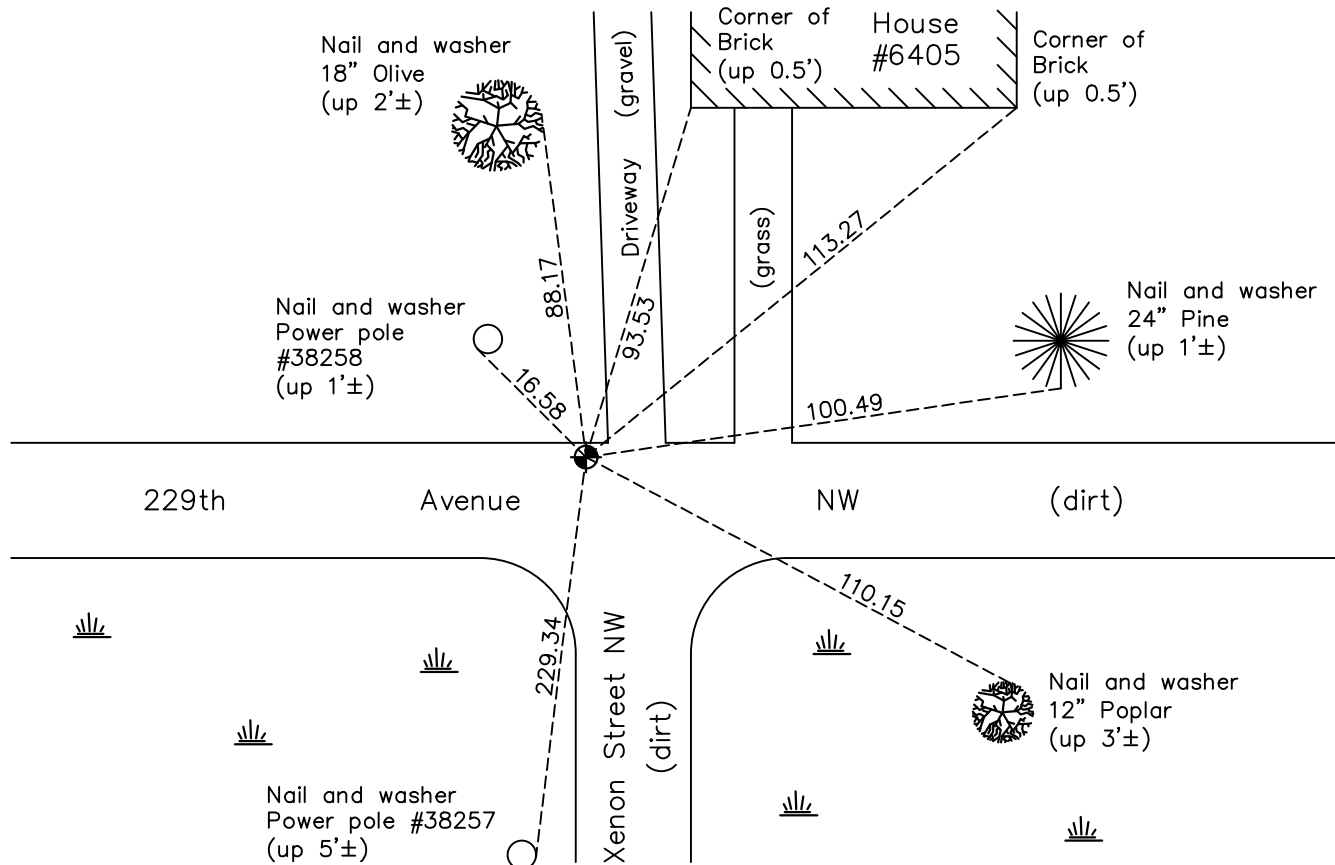
Northwest Corner of Sec. 2 Township 33 Range 25

On the 12th day of August, 1965, the described corner was evidenced by area resurvey

and to perpetuate the location of said corner, at the exact location thereof, a permanent marker was placed consisting of a cast iron monument

AND on the 18th day of June, 2021, said permanent marker was found down 1'± and the ties were updated

Updated reference ties are as shown below.



Revision Date

7/27/2021

N.A.D. 1983 Coordinates
(1996 Adjustment)

County Project Coordinates	
Northing	<u>227569.7441</u>
Easting	<u>458143.4596</u>
Date	<u>1/17/01</u>

I hereby certify that this United States public land survey monument record is correct and complete to the best of my knowledge and belief.

David Zieglmeier Date 3/28/24

David M. Zieglmeier, Anoka County Surveyor
Minnesota License Number 46179

HISTORY OF GOVERNMENT CORNER

Page No. 5

County of Anoka

State of Minnesota

Northwest Corner of Sec. 2 Township 33 Range 25

CORNER HISTORY:

September 1849 - This corner was established by Theodore Conkey, Deputy Surveyor. Conkey marked the position by "set post corner sections 2, 3, 34 and 35" with three bearing trees marked as accessories.

January 22, 1965 - Set P.K. spike using area resurvey. Established ties to P.K. spike.

August 12, 1965 - Found P.K. spike and replaced with a cast iron monument down 0.3'±.

July 3, 1969 - Found cast iron monument and updated ties.

July 30, 1973 - Found cast iron monument and updated ties.

July 14, 1976 - Found cast iron monument and updated ties.

July 9, 1979 - Found cast iron monument and updated ties.

July 26, 1982 - Found cast iron monument and updated ties.

August 31, 1988 - Found cast iron monument and updated ties.

June 30, 1994 - Found cast iron monument and updated ties.

January 17, 2001 - Established NAD 1983 (1996 adj.) Anoka County project coordinates by static GPS methods.

September 19, 2002 - Found cast iron monument and updated ties.

October 16, 2013 - Found cast iron monument down 1'±. Verified position by VRS GPS methods. Updated ties.

March 19, 2018 - Found cast iron monument down 1'±. Verified position by VRS GPS methods. Updated ties.

June 18, 2021 - Found cast iron monument down 1'±. Verified position by VRS GPS methods. Updated ties.