

CERTIFICATE OF LOCATION OF GOVERNMENT CORNER

County of Anoka

State of Minnesota

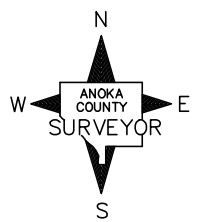
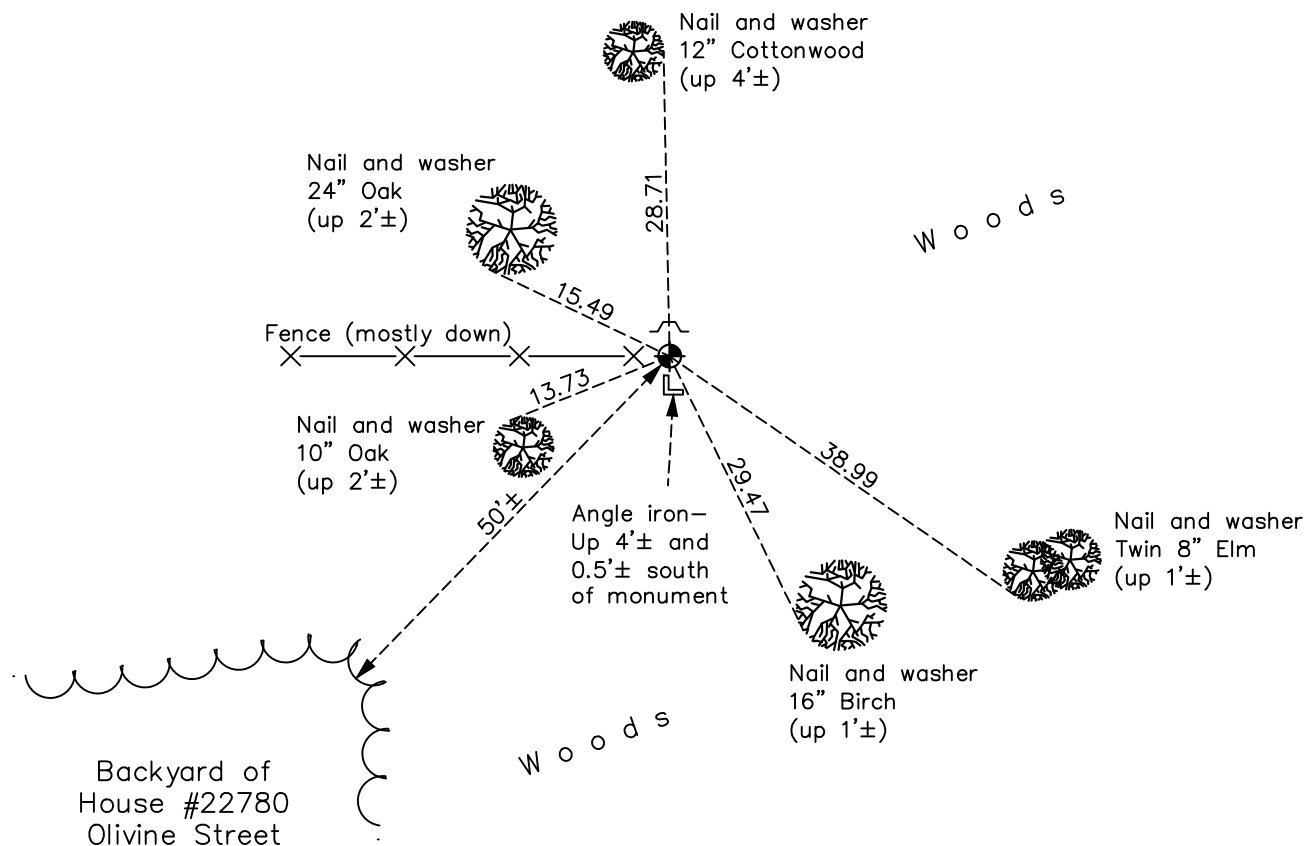
Northwest Corner of Sec. 3 Township 33 Range 25

On the 14th day of October, 1968, the described corner was evidenced by area resurvey

and to perpetuate the location of said corner, at the exact location thereof, a permanent marker was placed consisting of a cast iron monument with a sign and post on the north side

AND on the 23rd day of January, 2018, said permanent marker was found and the ties were updated

Updated reference ties are as shown below.



Revision Date
4/11/18

N.A.D. 1983 Coordinates
(1996 Adjustment)

County Project Coordinates	
Northing	<u>227630.7994</u>
Easting	<u>452844.0207</u>
Date	<u>12/16/02</u>

I hereby certify that this United States public land survey monument record is correct and complete to the best of my knowledge and belief.

David Zieglmeier Date 6/8/21

David M. Zieglmeier, Anoka County Surveyor

Minnesota License Number 46179

HISTORY OF GOVERNMENT CORNER

Page No. 7

County of Anoka

State of Minnesota

Northwest Corner of Sec. 3 Township 33 Range 25

CORNER HISTORY:

September 1849 - This corner was established by Theodore Conkey, Deputy Surveyor. Conkey marked the position by "set post corner sections 3, 4, 33 and 34" with four bearing trees marked as accessories.

October 14, 1968 - Set cast iron monument using area resurvey. Established ties to monument.

June 22, 1987 - Found cast iron monument w/sign and post on the north side. Updated ties.

July 11, 1994 - Found cast iron monument w/sign and post on the north side. Updated ties.

December 16, 2002 - Established NAD 1983 (1996 adj.) Anoka County project coordinates by static GPS methods.

March 19, 2013 - Found cast iron monument w/sign and post on the north side and an angle iron 0.5'± south of monument. Updated ties.

January 23, 2018 - Found cast iron monument flush w/sign and post on the north side and an angle iron 0.5'± south of monument. Updated ties.