

CERTIFICATE OF LOCATION OF GOVERNMENT CORNER

County of Anoka

State of Minnesota

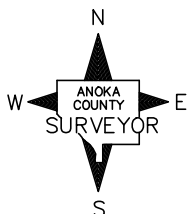
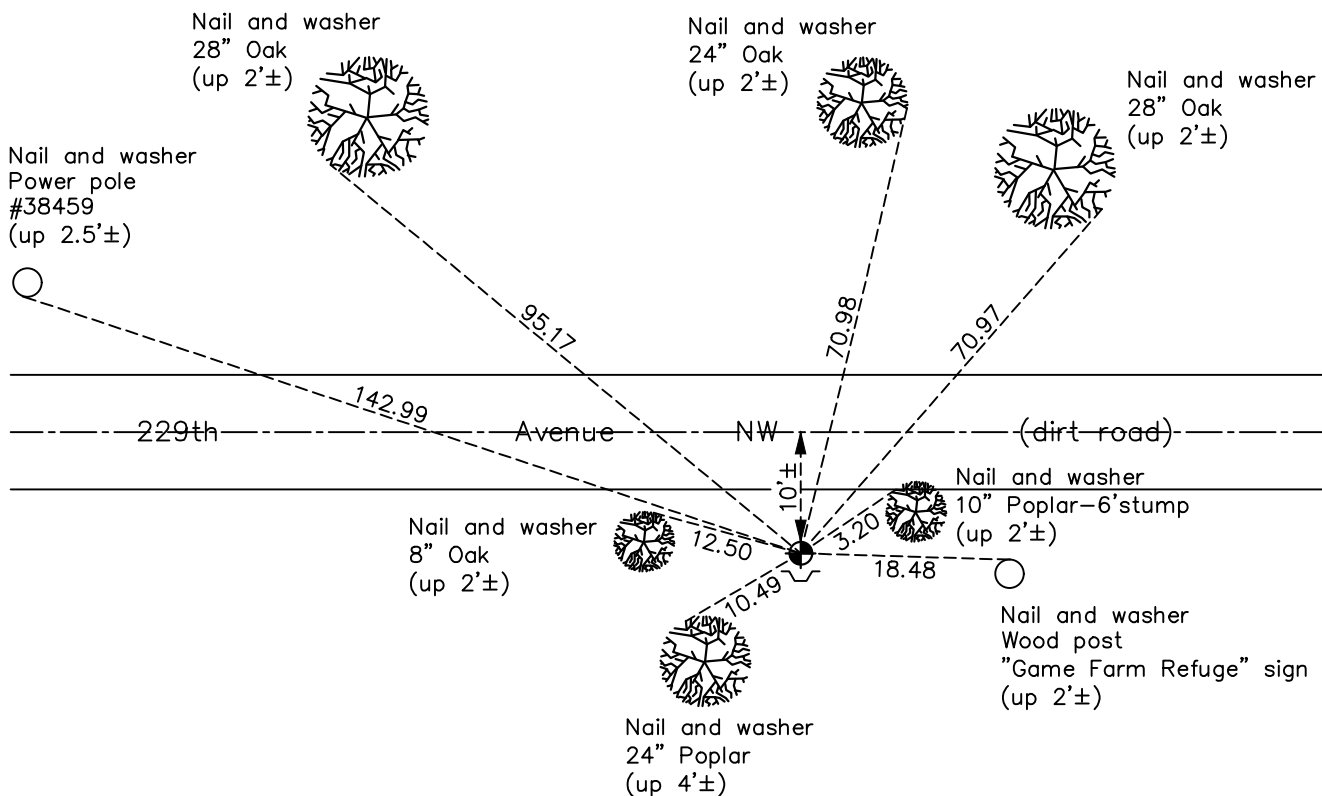
Northeast Corner of Sec. 5 Township 33 Range 25

On the 5th day of August, 1968, the described corner was evidenced by area resurvey

and to perpetuate the location of said corner, at the exact location thereof, a permanent marker was placed consisting of a cast iron monument with a sign and post on the south side

AND on the 19th day of March, 2018, said permanent marker was found down 1'± and the ties were updated

Updated reference ties are as shown below.



Revision Date

4/11/18

N.A.D. 1983 Coordinates
(1996 Adjustment)

County Project Coordinates	
Northing	<u>227709.7006</u>
Easting	<u>447556.4034</u>
Date	<u>9/24/02</u>

I hereby certify that this United States public land survey monument record is correct and complete to the best of my knowledge and belief.

David Zieglmeier Date 6/8/21

David M. Zieglmeier, Anoka County Surveyor

Minnesota License Number 46179

HISTORY OF GOVERNMENT CORNER

Page No. 9

County of Anoka

State of Minnesota

Northeast Corner of Sec. 5 Township 33 Range 25

CORNER HISTORY:

September 1849 - This corner was established by Theodore Conkey, Deputy Surveyor. Conkey marked the position by "set post corner sections 4, 5, 32 and 33" with four bearing trees marked as accessories.

August 5, 1968 - Set cast iron monument using area resurvey. Established ties to monument.

July 11, 1994 - Found cast iron monument w/sign and post on the south side. Updated ties.

September 24, 2002 - Found cast iron monument w/sign and post on the south side. Updated ties. Established NAD 1983 (1996 adj.) Anoka County project coordinates by static GPS methods.

March 18, 2013 - Found Cast Iron Monument down 1'± w/sign and post on the south side. Updated ties.

March 19, 2018 - Found Cast Iron Monument down 1'± w/sign and post on the south side. Verified position by VRS GPS methods. Updated ties.