

# CERTIFICATE OF LOCATION OF GOVERNMENT CORNER

County of Anoka

State of Minnesota

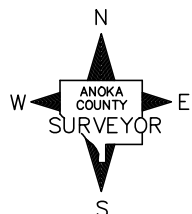
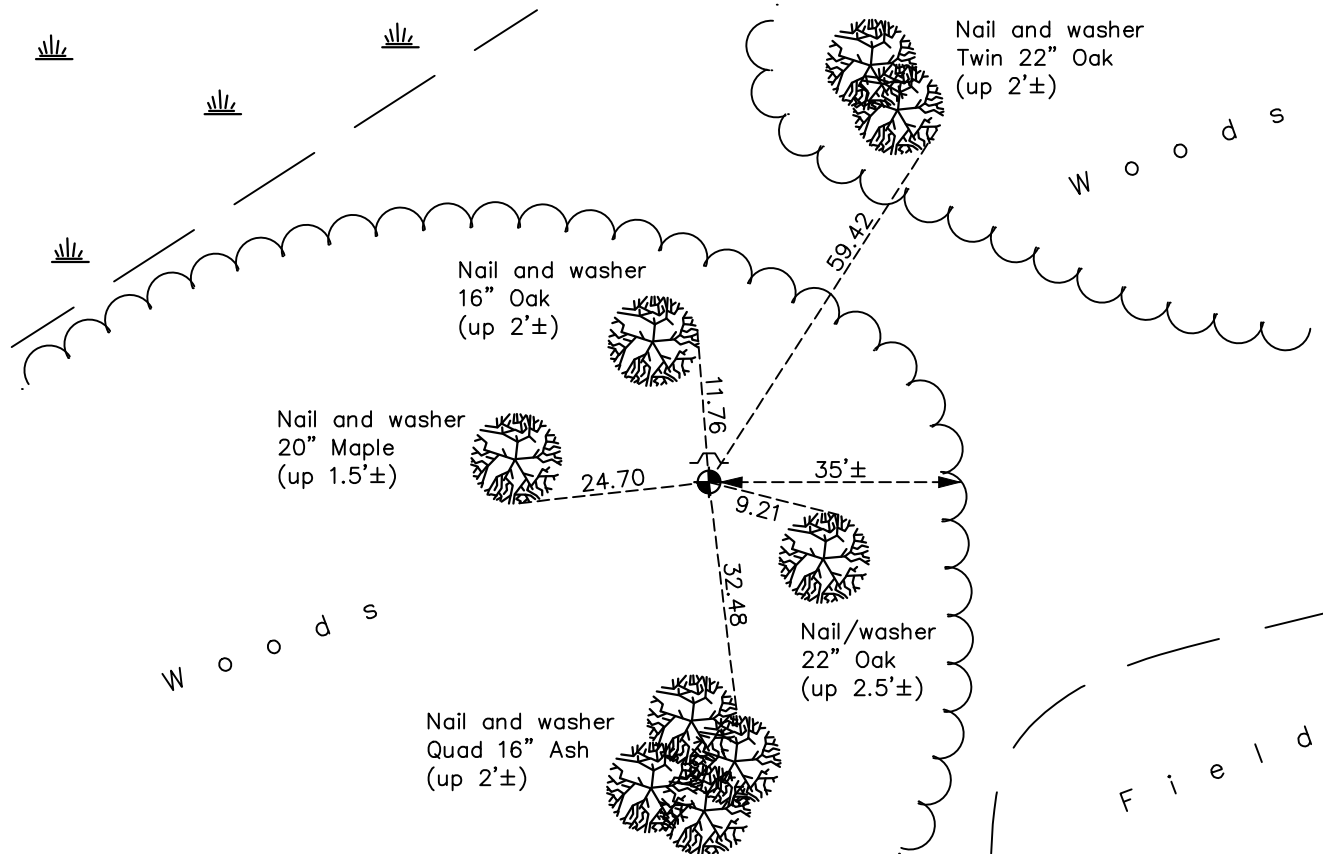
## North $\frac{1}{4}$ Corner of Sec. 5 Township 33 Range 25

On the 14th day of October, 1968, the described corner was evidenced by area resurvey

and to perpetuate the location of said corner, at the exact location thereof, a permanent marker was placed consisting of a cast iron monument

AND on the 6th day of March, 2018, said permanent marker was found down 0.1'± with a sign and post on the north side and the ties were updated

Updated reference ties are as shown below.



Revision Date

4/11/18

N.A.D. 1983 Coordinates  
(1996 Adjustment)

County Project Coordinates	
Northing	<u>227748.4919</u>
Easting	<u>444937.5681</u>
Date	<u>10/07/02</u>

I hereby certify that this United States public land survey monument record is correct and complete to the best of my knowledge and belief.

*David Zieglmeier* Date 6/8/21

David M. Zieglmeier, Anoka County Surveyor

Minnesota License Number 46179

# HISTORY OF GOVERNMENT CORNER

Page No. 10

County of Anoka

State of Minnesota

North 1/4 Corner of Sec. 5 Township 33 Range 25

## **CORNER HISTORY:**

September 1849 - This corner was established by Theodore Conkey, Deputy Surveyor. Conkey marked the position by "set post for quarter section corner" with two bearing trees marked as accessories.

October 14, 1968 - Set cast iron monument using area resurvey. Established ties to monument.

June 18, 1987 - Found cast iron monument and updated ties.

July 11, 1994 - Found cast iron monument and updated ties.

October 7, 2002 - Found cast iron monument and updated ties. Established NAD 1983 (1996 adj.) Anoka County project coordinates by static GPS methods.

April 15, 2013 - Found cast iron monument w/sign and post on the north side. Updated ties.

March 6, 2018 - Found cast iron monument down 0.1'± w/sign and post on the north side. Updated ties.