

# CERTIFICATE OF LOCATION OF GOVERNMENT CORNER

County of Anoka

State of Minnesota

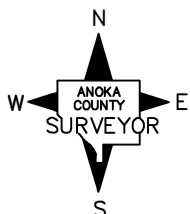
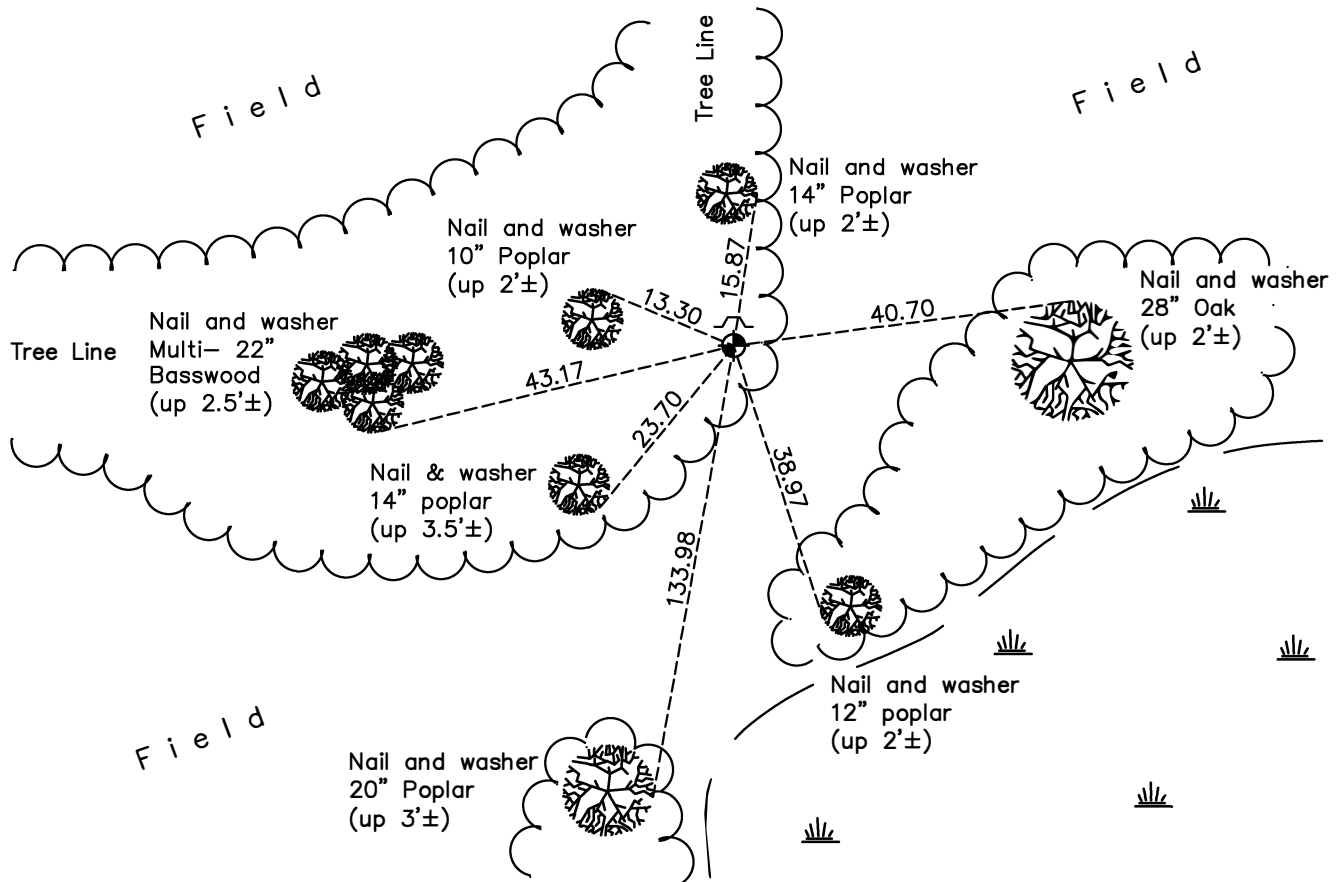
## Northeast Corner of Sec. 6 Township 33 Range 25

On the 18th day of April, 1963, the described corner was evidenced by area resurvey

and to perpetuate the location of said corner, at the exact location thereof, a permanent marker was placed consisting of a cast iron monument with a sign and post on the north side

AND on the 19th day of January, 2018, said permanent marker was found down 0.2'± and the ties were updated

Updated reference ties are as shown below.



Revision Date

4/11/18

N.A.D. 1983 Coordinates  
(1996 Adjustment)

County Project Coordinates	
Northing	<u>227787.7961</u>
Easting	<u>442301.9298</u>
Date	<u>1/28/03</u>

I hereby certify that this United States public land survey monument record is correct and complete to the best of my knowledge and belief.

*David Zieglmeier* Date 6/8/21

David M. Zieglmeier, Anoka County Surveyor

Minnesota License Number 46179

# HISTORY OF GOVERNMENT CORNER

Page No. 11

County of Anoka

State of Minnesota

## Northeast Corner of Sec. 6 Township 33 Range 25

### **CORNER HISTORY:**

September 1849 - This corner was established by Theodore Conkey, Deputy Surveyor. Conkey marked the position by "set post corner sections 5, 6, 31 and 32" with three bearing trees marked as accessories.

April 18, 1963 - Set 1/2" iron pipe on south side of corner fence post using area resurvey. Established ties to iron pipe.

August 10, 1965 - Found iron pipe and updated ties.

July 8, 1969 - Found iron pipe and updated ties.

August 2, 1973 - Found iron pipe and updated ties.

July 14, 1976 - Found iron pipe and updated ties.

July 10, 1979 - Found iron pipe and updated ties.

August 4, 1982 - Found iron pipe and updated ties.

October 23, 1984 - Replaced iron pipe with cast iron monument. Updated ties. Set sign and post on north side.

August 26, 1988 - Found cast iron monument and updated ties.

June 28, 1994 - Found cast iron monument and updated ties.

January 28, 2003 - Found cast iron monument w/sign and post on the north side. Updated ties. Established NAD 1983 (1996 adj.) Anoka County project coordinates by static GPS methods.

April 16, 2013 - Found cast iron monument w/sign and post on the north side. Updated ties.

January 19, 2018 - Found cast iron monument down 0.2'± w/sign and post on the north side. Verified position by VRS GPS methods. Updated ties.