

# CERTIFICATE OF LOCATION OF GOVERNMENT CORNER

County of Anoka

State of Minnesota

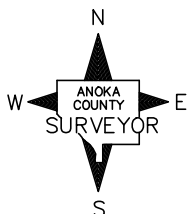
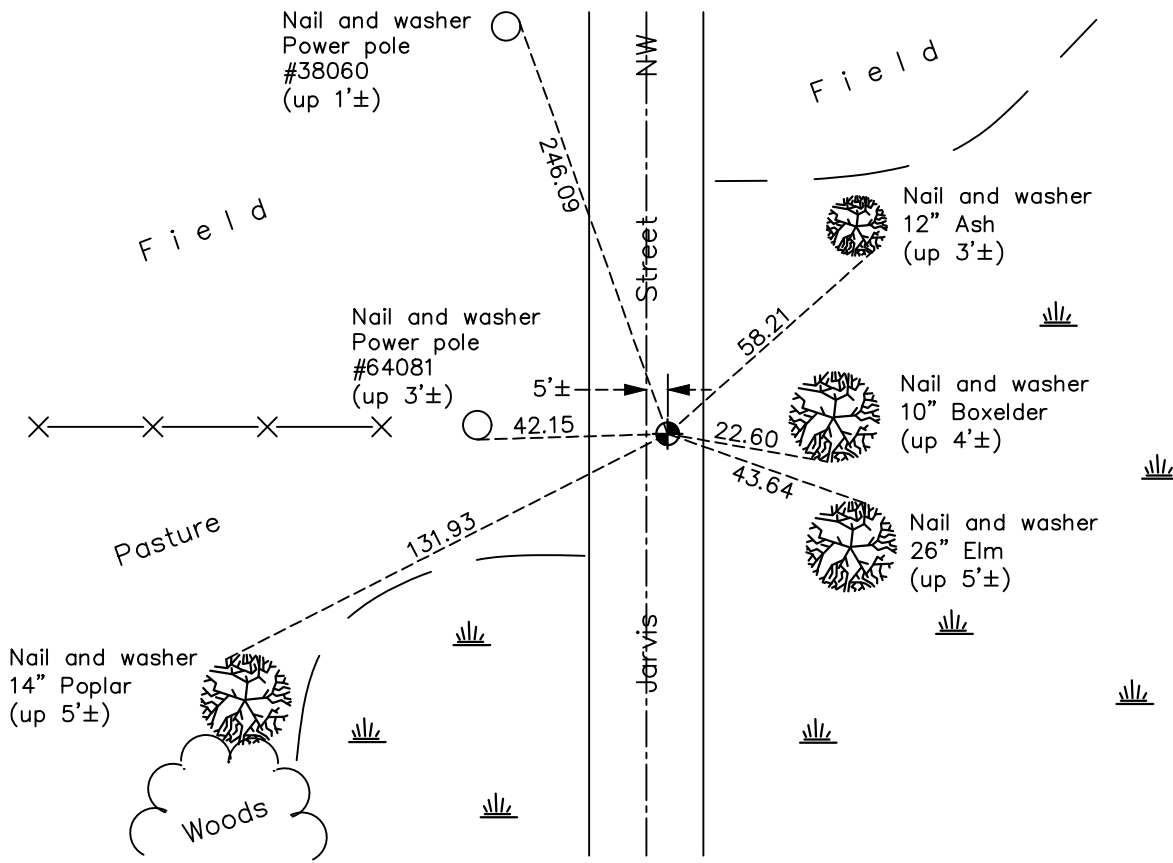
## Northwest Corner of Sec. 6 Township 33 Range 25

On the 9th day of April, 1963, the described corner was evidenced by a granite monument with a metal top

and to perpetuate the location of said corner, at the exact location thereof, a permanent marker was placed consisting of an Anoka County cast iron monument on top of the granite monument

AND on the 11th day of May, 2020, said permanent marker was reset with a 3/4 CIM set flush after road construction using static GPS methods. The ties were updated.

Updated reference ties are as shown below.



Revision Date

5/27/20

N.A.D. 1983 Coordinates  
(1996 Adjustment)

County Project Coordinates	
Northing	<u>227825.8421</u>
Easting	<u>437533.4733</u>
Date	<u>2/06/03</u>

I hereby certify that this United States public land survey monument record is correct and complete to the best of my knowledge and belief.

*David M Zieglmeier* Date 6/8/21

David M. Zieglmeier, Anoka County Surveyor

Minnesota License Number 46179

# HISTORY OF GOVERNMENT CORNER

Page No. 13

County of Anoka

State of Minnesota

## Northwest Corner of Sec. 6 Township 33 Range 25

### **CORNER HISTORY:**

September 1849 - This corner was established by Theodore Conkey, Deputy Surveyor. Conkey marked the position by "set post corner to townships 33 and 34 north, ranges 25 and 26 west" with three bearing trees marked as accessories.

April 9, 1963 - Found a 6" x 6" granite monument with a metal top down 16". Set 1/2" iron pipe on top of granite flush with road. Updated ties.

August 10, 1965 - Found iron pipe on top of granite monument w/metal top. Updated ties.

July 8, 1969 - Found iron pipe on top of granite monument w/metal top. Updated ties.

April 19, 1974 - Found iron pipe on top of granite monument w/metal top. Updated ties.

July 14, 1976 - Found iron pipe on top of granite monument w/metal top. Updated ties.

July 10, 1979 - Found iron pipe on top of granite monument w/metal top. Updated ties.

July 26, 1982 - Found Sherburne County cast iron monument. Updated ties.

June 28, 1985 - Found Sherburne County cast iron monument. Updated ties.

August 24, 1988 - Found Sherburne County cast iron monument. Updated ties.

June 28, 1994 - Found Sherburne County cast iron monument. Updated ties.

February 6, 2003 - Established NAD 1983 (1996 adj.) Anoka County project coordinates by static GPS methods.

May 15, 2003 - Found Sherburne County cast iron monument. Updated ties.

November 15, 2013 - Found Anoka County cast iron Monument 5'± east of the center line. Verified position by VRS GPS methods. Updated ties.

January 4, 2018 - Found Anoka County cast iron monument. Verified position by VRS GPS methods. Updated ties.

May 11, 2020 - Set 3/4 cast iron monument flush after road construction using static GPS methods. Updated ties.