

CERTIFICATE OF LOCATION OF GOVERNMENT CORNER

County of Anoka

State of Minnesota

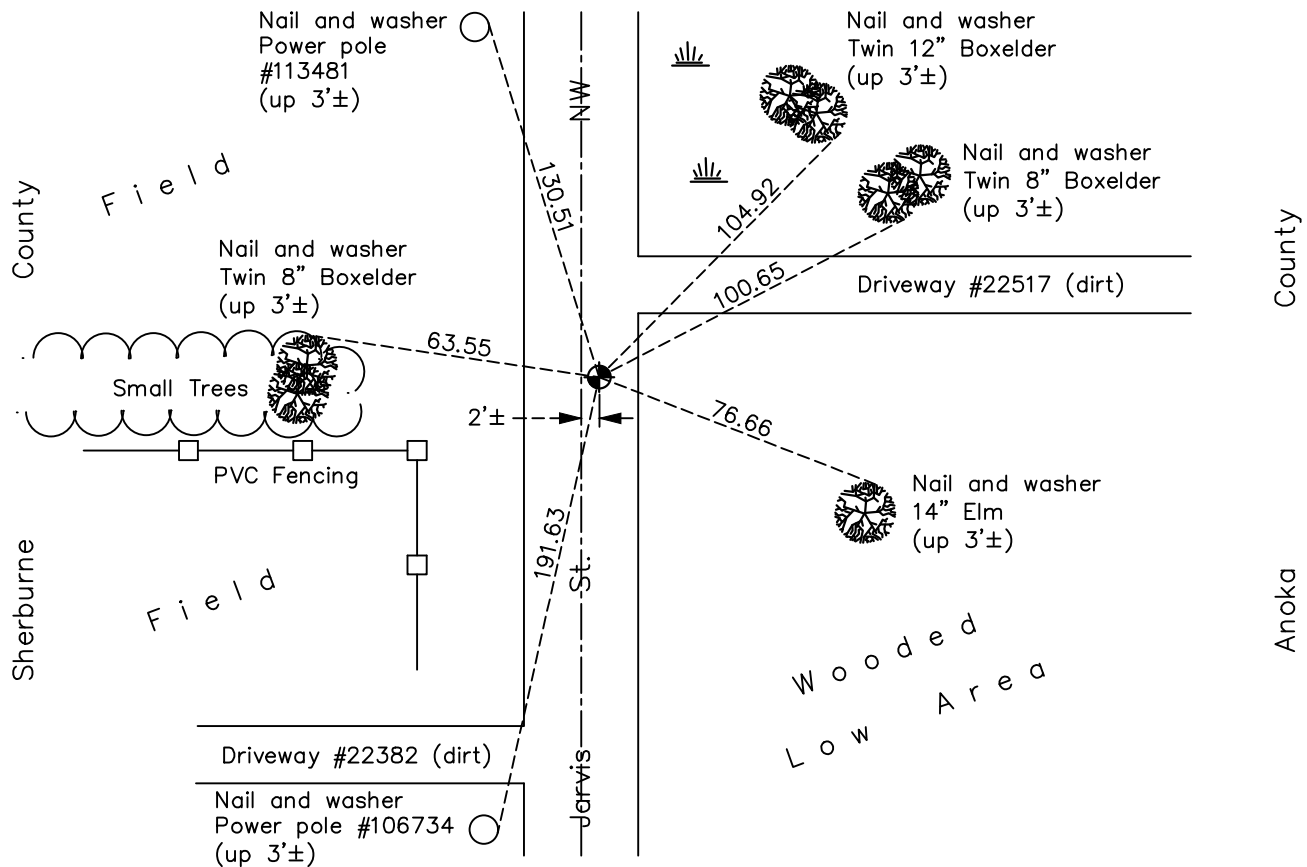
West 1/4 Corner of Sec. 6 Township 33 Range 25

On the 4th day of April, 1963, the described corner was evidenced by a cast iron monument set by Donn Pepper.

and to perpetuate the location of said corner, at the exact location thereof, a permanent marker was placed consisting of the same cast iron monument down 1'±

AND on the 4th day of January, 2018, said permanent marker was found up 0.1'± and the ties were updated

Updated reference ties are as shown below.



N

S

Revision Date

4/12/18

N.A.D. 1983 Coordinates
(1996 Adjustment)

County Project Coordinates	
Northing	<u>225357.2482</u>
Easting	<u>437495.9854</u>
Date	<u>2/06/03</u>

I hereby certify that this United States public land survey monument record is correct and complete to the best of my knowledge and belief.

David M. Zieglermeier Date 6/8/21

David M. Zieglermeier, Anoka County Surveyor

Minnesota License Number 46179

HISTORY OF GOVERNMENT CORNER

Page No. 14

County of Anoka

State of Minnesota

West 1/4 Corner of Sec. 6 Township 33 Range 25

CORNER HISTORY:

September 1849 - This corner was established by Theodore Conkey, Deputy Surveyor. Conkey marked the position by "set post for quarter section corner" with two bearing trees marked as accessories.

April 4, 1963 - Donn Pepper set cast iron monument 2.5'± east of centerline of dirt road. Established ties to monument.

August 9, 1965 - Found cast iron monument and updated ties.

July 8, 1969 - Found cast iron monument down 0.4'± and updated ties.

July 23, 1973 - Found cast iron monument and updated ties.

July 15, 1976 - Found cast iron monument and updated ties.

July 10, 1979 - Found cast iron monument and updated ties.

July 26, 1982 - Found cast iron monument and updated ties.

August 23, 1988 - Found cast iron monument and updated ties.

September 13, 1991 - Found cast iron monument and updated ties.

June 28, 1994 - Found cast iron monument and updated ties.

February 6, 2003 - Established NAD 1983 (1996 adj.) Anoka County project coordinates by static GPS methods.

May 15, 2003 - Found cast iron monument down 1'± and raised. Updated ties.

November 15, 2013 - Found cast iron monument. Verified position by VRS GPS methods. Updated ties.

January 4, 2018 - Found cast iron monument up 0.1'±. Verified position by VRS GPS methods. Updated ties.