

CERTIFICATE OF LOCATION OF GOVERNMENT CORNER

County of Anoka

State of Minnesota

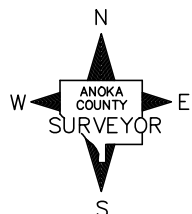
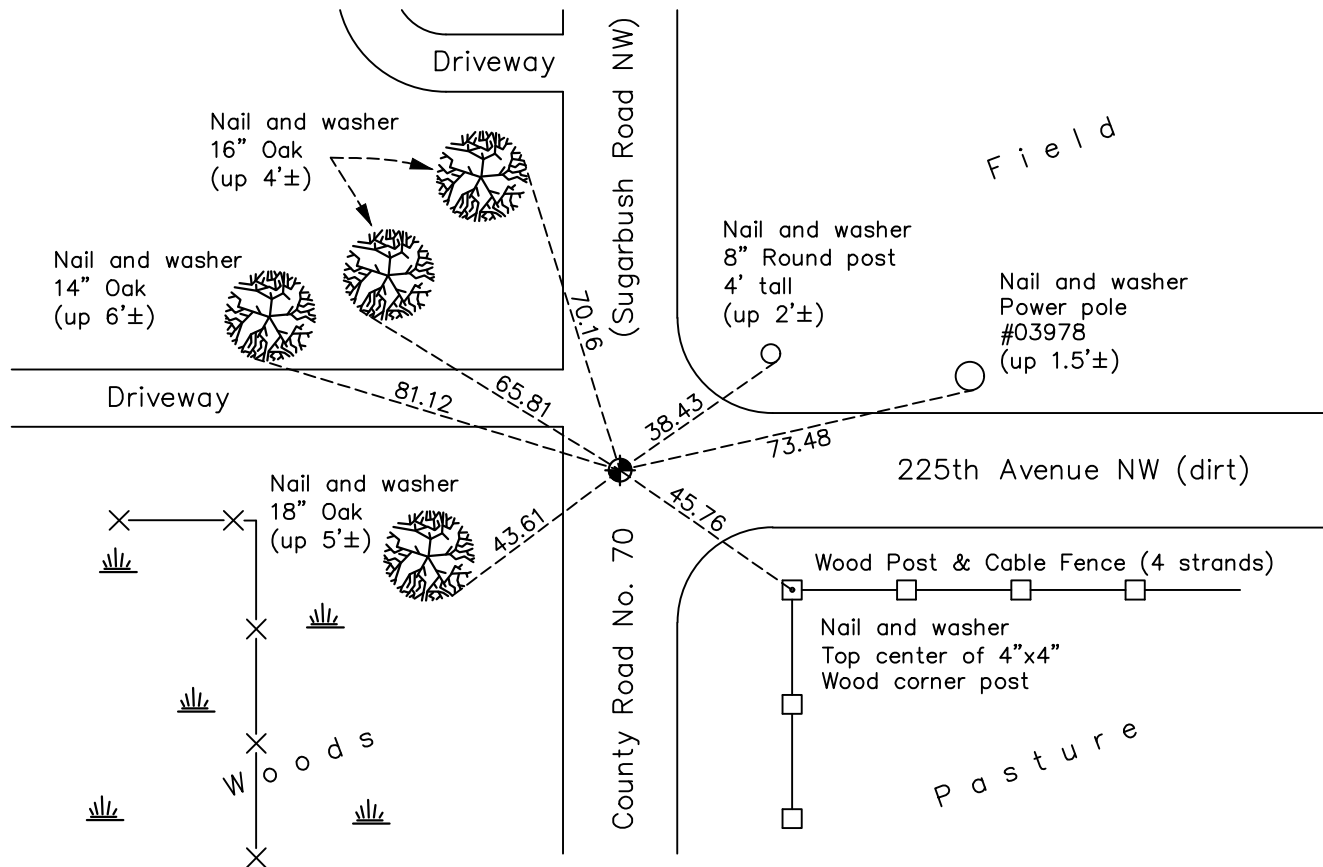
East 1/4 Corner of Sec. 6 Township 33 Range 25

On the 5th day of March, 1963, the described corner was evidenced by remains of old rotted post

and to perpetuate the location of said corner, at the exact location thereof, a permanent marker was placed consisting of a cast iron monument

AND on the 26th day of March, 2013, said permanent marker was found flush and the ties were updated

Updated reference ties are as shown below.



Revision Date

4/12/18

N.A.D. 1983 Coordinates
(1996 Adjustment)

County Project Coordinates

Northing 225263.1244

Easting 442322.5855

Date 9/23/02

I hereby certify that this United States public land survey monument record is correct and complete to the best of my knowledge and belief.

David M. Zieglmeier Date 6/8/21

David M. Zieglmeier, Anoka County Surveyor

Minnesota License Number 46179

HISTORY OF GOVERNMENT CORNER

Page No. 15

County of Anoka

State of Minnesota

East 1/4 Corner of Sec. 6 Township 33 Range 25

CORNER HISTORY:

May 1855 - This corner was established by James M. Marsh, Deputy Surveyor. Marsh marked the position by "set quarter section post" with two bearing trees marked as accessories.

March 5, 1963 - Found remains of old rotted post, down 1.5' in middle of north/south county road and on fence line to west. Set 1/2" iron pipe down 1.5'. Established ties to iron pipe.

August 10, 1965 - Found iron pipe and updated ties.

July 11, 1969 - Found iron pipe and updated ties.

July 16, 1969 - Replaced iron pipe with cast iron monument flush and 2'± east of centerline. Set P.K. nails 2.00' North and East.

July 23, 1973 - Found cast iron monument and updated ties.

July 15, 1976 - Found cast iron monument and updated ties.

July 12, 1979 - Found cast iron monument and updated ties.

July 26, 1982 - Found cast iron monument and updated ties.

June 28, 1985 - Found cast iron monument and updated ties.

August 26, 1988 - Found cast iron monument and updated ties.

June 28, 1994 - Found cast iron monument and updated ties.

September 23, 2002 - Established NAD 1983 (1996 adj.) Anoka County project coordinates by static GPS methods.

September 24, 2002 - Found cast iron monument and updated ties.

August 25, 2004 - Found cast iron monument and updated ties.

March 26, 2013 - Found cast iron monument flush. Verified position by VRS GPS methods. Updated ties.

January 4, 2018 - Found cast iron monument flush. Verified position by VRS GPS methods. Updated ties.