

CERTIFICATE OF LOCATION OF GOVERNMENT CORNER

County of Anoka

State of Minnesota

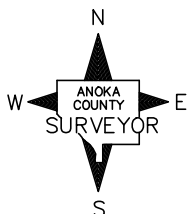
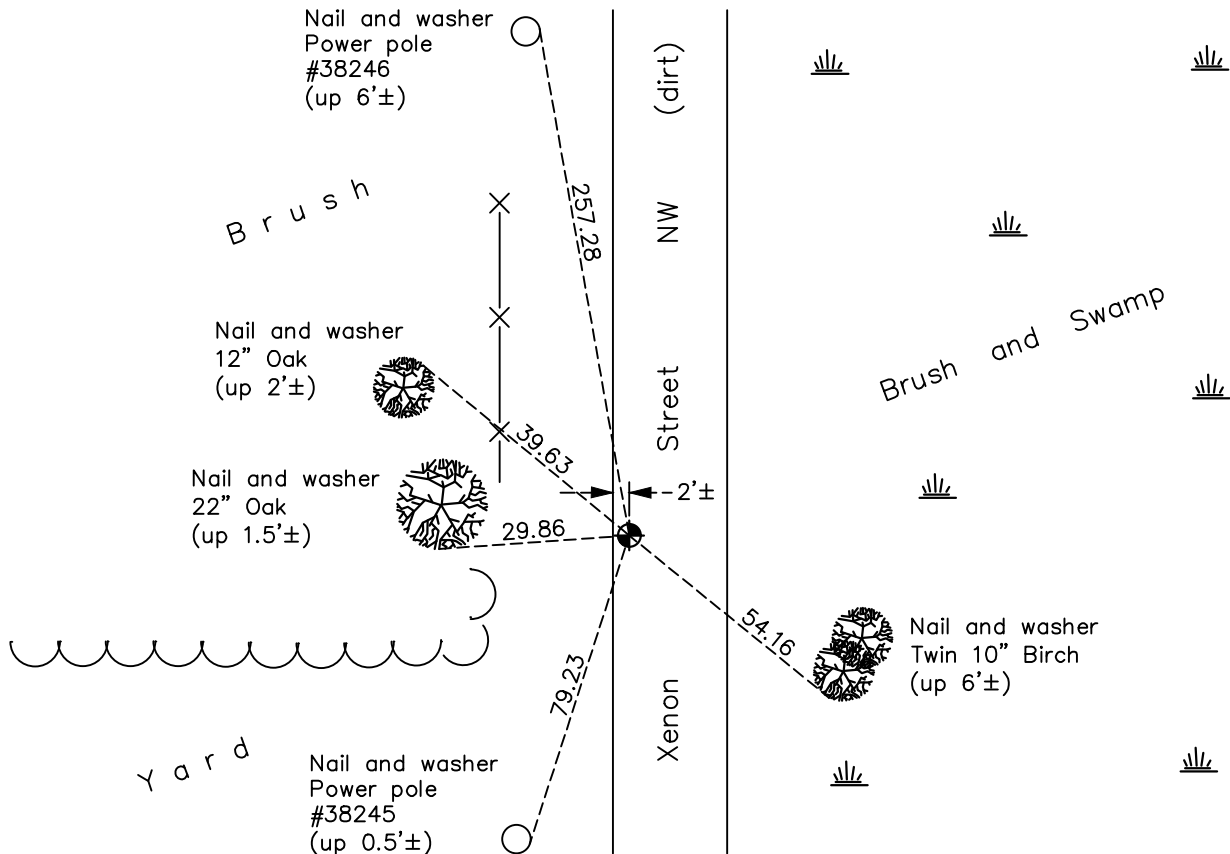
West 1/4 Corner of Sec. 2 Township 33 Range 25

On the 22nd day of January, 1965, the described corner was evidenced by area resurvey

and to perpetuate the location of said corner, at the exact location thereof, a permanent marker was placed consisting of a cast iron monument

AND on the 19th day of March, 2018, said permanent marker was found down 0.5'± and the ties were updated

Updated reference ties are as shown below.



Revision Date

4/12/18

N.A.D. 1983 Coordinates
(1996 Adjustment)

County Project Coordinates	
Northing	225134.6778
Easting	458144.2462
Date	9/19/02

I hereby certify that this United States public land survey monument record is correct and complete to the best of my knowledge and belief.

David M. Zieglermeier Date 6/9/21

David M. Zieglermeier, Anoka County Surveyor

Minnesota License Number 46179

HISTORY OF GOVERNMENT CORNER

Page No. 18

County of Anoka

State of Minnesota

West 1/4 Corner of Sec. 2 Township 33 Range 25

CORNER HISTORY:

May 1855 - This corner was established by James M. Marsh, Deputy Surveyor. Marsh marked the position by "set quarter section post" with two bearing trees marked as accessories.

January 22, 1965 - Set temporary P.K. spike flush using area resurvey. Established ties to spike.

August 12, 1965 - Replaced temporary P.K. spike with a cast iron monument down 0.3'±. Updated ties.

July 3, 1969 - Found cast iron monument and updated ties.

July 23, 1973 - Found cast iron monument and updated ties.

July 16, 1976 - Found cast iron monument and updated ties.

July 9, 1979 - Found cast iron monument and updated ties.

July 26, 1982 - Found cast iron monument and updated ties.

July 2, 1985 - Found cast iron monument and updated ties.

August 31, 1988 - Found cast iron monument and updated ties.

June 30, 1994 - Found cast iron monument and updated ties.

September 19, 2002 - Found cast iron monument and updated ties. Established NAD 1983 (1996 adj.) Anoka County project coordinates by static GPS methods.

October 17, 2013 - Found cast iron monument down 0.5'±. Verified position by VRS GPS methods. Updated ties.

March 19, 2018 - Found cast iron monument down 0.5'±. Verified position by VRS GPS methods. Updated ties