

# CERTIFICATE OF LOCATION OF GOVERNMENT CORNER

County of Anoka

State of Minnesota

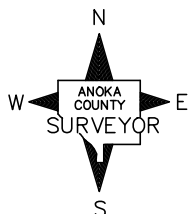
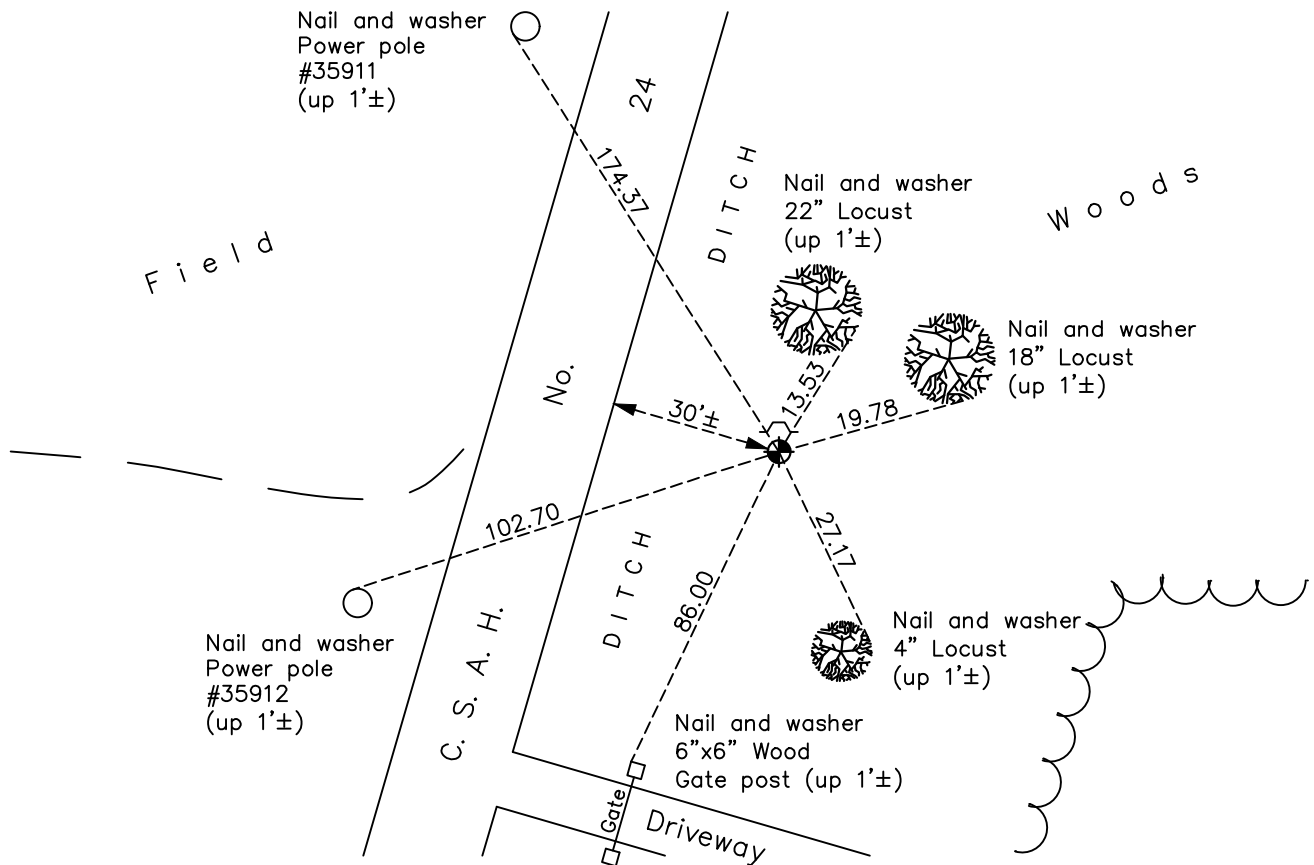
## East 1/4 Corner of Sec. 2 Township 33 Range 25

On the 6th day of December, 1971, the described corner was evidenced by area resurvey

and to perpetuate the location of said corner, at the exact location thereof, a permanent marker was placed consisting of a cast iron monument with a sign and post 0.5'± north of monument

AND on the 17th day of January, 2018, said permanent marker was found down 0.3'± and the ties were updated

Updated reference ties are as shown below.



Revision Date

4/12/18

N.A.D. 1983 Coordinates  
(1996 Adjustment)

County Project Coordinates	
Northing	<u>225049.3130</u>
Easting	<u>463401.2633</u>
Date	<u>1/18/01</u>

I hereby certify that this United States public land survey monument record is correct and complete to the best of my knowledge and belief.

*David M Zieglmeier* Date 6/9/21

David M. Zieglmeier, Anoka County Surveyor

Minnesota License Number 46179

# HISTORY OF GOVERNMENT CORNER

Page No. 19

County of Anoka

State of Minnesota

East 1/4 Corner of Sec. 2 Township 33 Range 25

## **CORNER HISTORY:**

May 1855 - This corner was established by James M. Marsh, Deputy Surveyor. Marsh marked the position by "set quarter section post" with two bearing trees marked as accessories.

December 6, 1971 - Set cast iron monument flush using area resurvey. Established ties to monument. Set steel sign and post with warning sign.

July 24, 1973 - Found cast iron monument and updated ties.

July 16, 1976 - Found cast iron monument and updated ties.

July 9, 1979 - Found cast iron monument and updated ties.

July 30, 1982 - Found cast iron monument and updated ties.

June 10, 1989 - Found cast iron monument w/sign and post on the north side. Updated ties.

June 30, 1994 - Found cast iron monument w/sign and post on the north side. Updated ties.

January 18, 2001 - Established NAD 1983 (1996 adj.) Anoka County project coordinates by static GPS methods.

March 21, 2013 - Found cast iron monument w/sign and post on the north side. Verified position by VRS GPS methods. Updated ties.

January 17, 2018 - Found cast iron monument down 0.3'± w/sign and post 0.5'± north of monument. Verified position by VRS GPS methods. Updated ties.