

CERTIFICATE OF LOCATION OF GOVERNMENT CORNER

County of Anoka

State of Minnesota

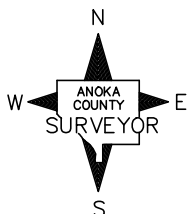
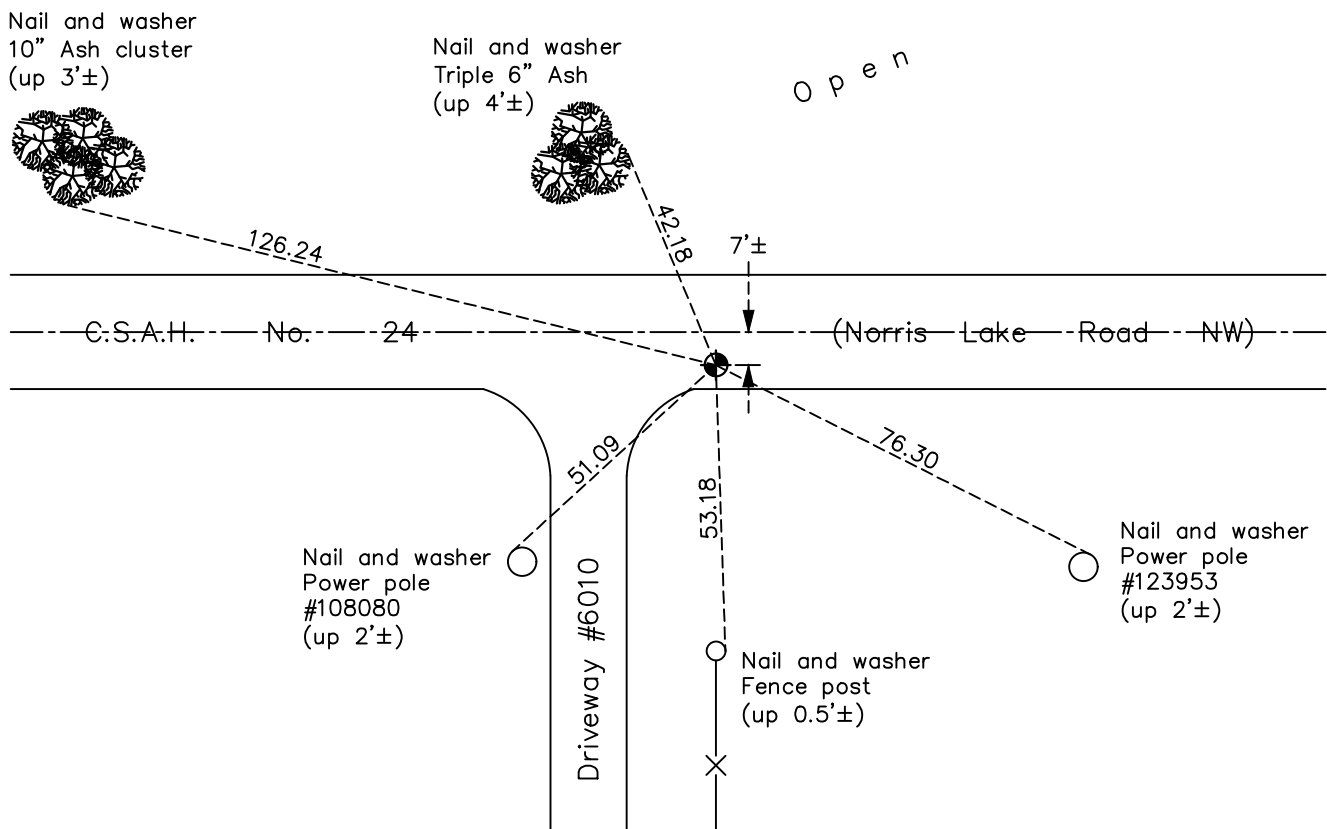
South 1/4 Corner of Sec. 2 Township 33 Range 25

On the 26th day of April, 1974, the described corner was evidenced by area resurvey

and to perpetuate the location of said corner, at the exact location thereof, a permanent marker was placed consisting of a cast iron monument

AND on the 1st day of February, 2018, said permanent marker was found and the ties were updated

Updated reference ties are as shown below.



Revision Date

4/12/18

N.A.D. 1983 Coordinates
(1996 Adjustment)

County Project Coordinates	
Northing	<u>222436.6519</u>
Easting	<u>460769.5052</u>
Date	<u>9/19/02</u>

I hereby certify that this United States public land survey monument record is correct and complete to the best of my knowledge and belief.

David M. Zieglmeier Date 6/9/21

David M. Zieglmeier, Anoka County Surveyor

Minnesota License Number 46179

HISTORY OF GOVERNMENT CORNER

Page No. 23

County of Anoka

State of Minnesota

South 1/4 Corner of Sec. 2 Township 33 Range 25

CORNER HISTORY:

May 1855 - This corner was established by James M. Marsh, Deputy Surveyor. Marsh marked the position by "set quarter section post" with two bearing trees marked as accessories.

April 26, 1974 - Set cast iron monument flush using area resurvey. Established ties to monument. Monument falls south of center line road. Set P.K. nails 2' north and east.

July 16, 1976 - Found cast iron monument and updated ties.

July 9, 1979 - Found cast iron monument and updated ties.

June 28, 1985 - Found cast iron monument and updated ties.

August 31, 1988 - Found cast iron monument and updated ties.

June 30, 1994 - Found cast iron monument and updated ties.

September 19, 2002 - Found cast iron monument and updated ties.

May 27, 2003 - Found cast iron monument, set construction ties and updated corner ties prior to road construction. Removed monument (unknown reset date).

December 8, 2010 - Found cast iron monument down 0.05'± and updated ties.

November 13, 2013 - Found cast iron monument. Verified position by VRS GPS methods. Updated ties.

February 1, 2018 - Found cast iron monument. Verified position by VRS GPS methods. Updated ties.