

CERTIFICATE OF LOCATION OF GOVERNMENT CORNER

County of Anoka

State of Minnesota

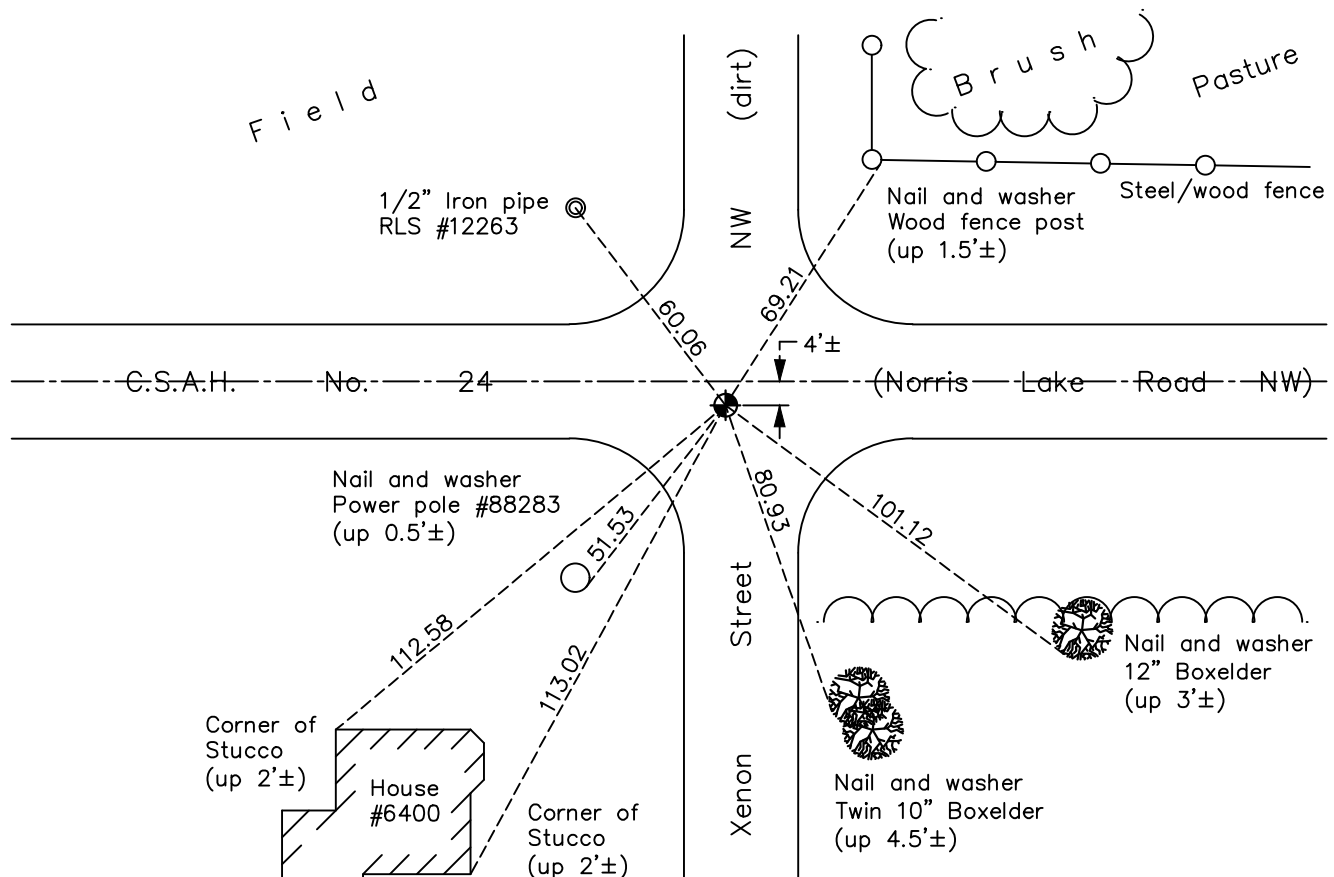
Southwest Corner of Sec. 2 Township 33 Range 25

On the 17th day of July, 1963, the described corner was evidenced by a 1" iron pipe from Highway Department ties

and to perpetuate the location of said corner, at the exact location thereof, a permanent marker was placed consisting of a cast iron monument

AND on the 22nd day of January, 2018, said permanent marker was found flush and the ties were updated

Updated reference ties are as shown below.



Revision Date

4/12/18

N.A.D. 1983 Coordinates
(1996 Adjustment)

County Project Coordinates

Northing 222499.2763

Easting 458145.4784

Date 9/19/02

I hereby certify that this United States public land survey monument record is correct and complete to the best of my knowledge and belief.

David M Zieglermeier Date 6/9/21

David M. Zieglermeier, Anoka County Surveyor

Minnesota License Number 46179

HISTORY OF GOVERNMENT CORNER

Page No. 24

County of Anoka

State of Minnesota

Southwest Corner of Sec. 2 Township 33 Range 25

CORNER HISTORY:

May 1855 - This corner was established by James M. Marsh, Deputy Surveyor. Marsh marked the position by "set post corner of sections 2, 3, 10 and 11" with two bearing trees marked as accessories.

January 1957 - Anoka County highway department found an iron pin. Updated ties.

July 17, 1963 - Found 1" iron pipe down 0.2'± using county highway department ties. Dug down and found nothing. Replaced with a cast iron monument flush. Updated ties.

August 12, 1965 - Found cast iron monument and updated ties.

July 3, 1969 - Found cast iron monument and updated ties.

July 23, 1973 - Found cast iron monument and updated ties.

July 16, 1976 - Found cast iron monument and updated ties.

July 19, 1979 - Found cast iron monument and updated ties.

July 29, 1982 - Found cast iron monument and updated ties.

June 28, 1985 - Found cast iron monument and updated ties.

August 31, 1988 - Found cast iron monument and updated ties.

June 30, 1994 - Found cast iron monument and updated ties.

September 19, 2002 - Established NAD 1983 (1996 adj.) Anoka County project coordinates by static GPS methods.

May 27, 2003 - Found cast iron monument, set construction ties and updated corner ties prior to road construction. Removed monument (unknown reset date).

December 8, 2010 - Found cast iron monument 4'± south of center line and updated ties.

October 17, 2013 - Found cast iron monument. Verified position by VRS GPS methods. Updated ties.

January 22, 2018 - Found cast iron monument flush. Verified position by VRS GPS methods. Updated ties.