

# CERTIFICATE OF LOCATION OF GOVERNMENT CORNER

County of Anoka

State of Minnesota

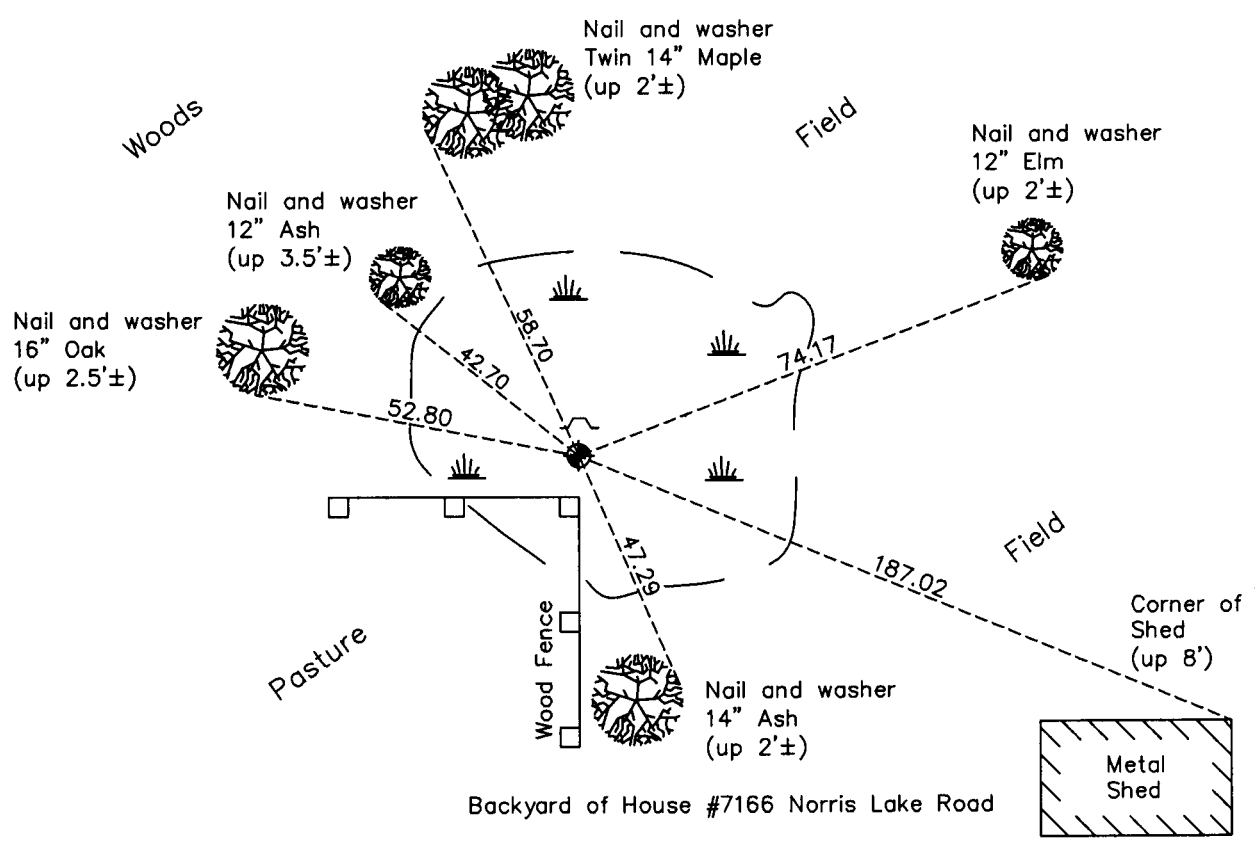
## Southwest Corner of Sec. 3 Township 33 Range 25

On the 19th day of November, 1974, the described corner was evidenced by area resurvey

and to perpetuate the location of said corner, at the exact location thereof, a permanent marker was placed consisting of a cast iron monument with a sign and post on the north side

AND on the 19th day of March, 2013, said permanent marker was found and the ties were updated

Updated reference ties are as shown below.



N  
W ANOKA COUNTY SURVEYOR E  
S

Revision Date  
12/30/13

N.A.D. 1983 Coordinates  
(1996 Adjustment)

County Project Coordinates	
Northing	222528.0475
Easting	452899.3142
Date	10/10/02

I hereby certify that this United States public land survey monument record is correct and complete to the best of my knowledge and belief.

*Larry D. Hoium* Date 12/30/13  
 Larry D. Hoium, Anoka County Surveyor  
 Minnesota License Number 18165