

# CERTIFICATE OF LOCATION OF GOVERNMENT CORNER

County of Anoka

State of Minnesota

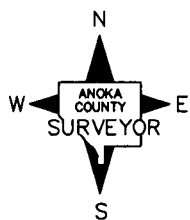
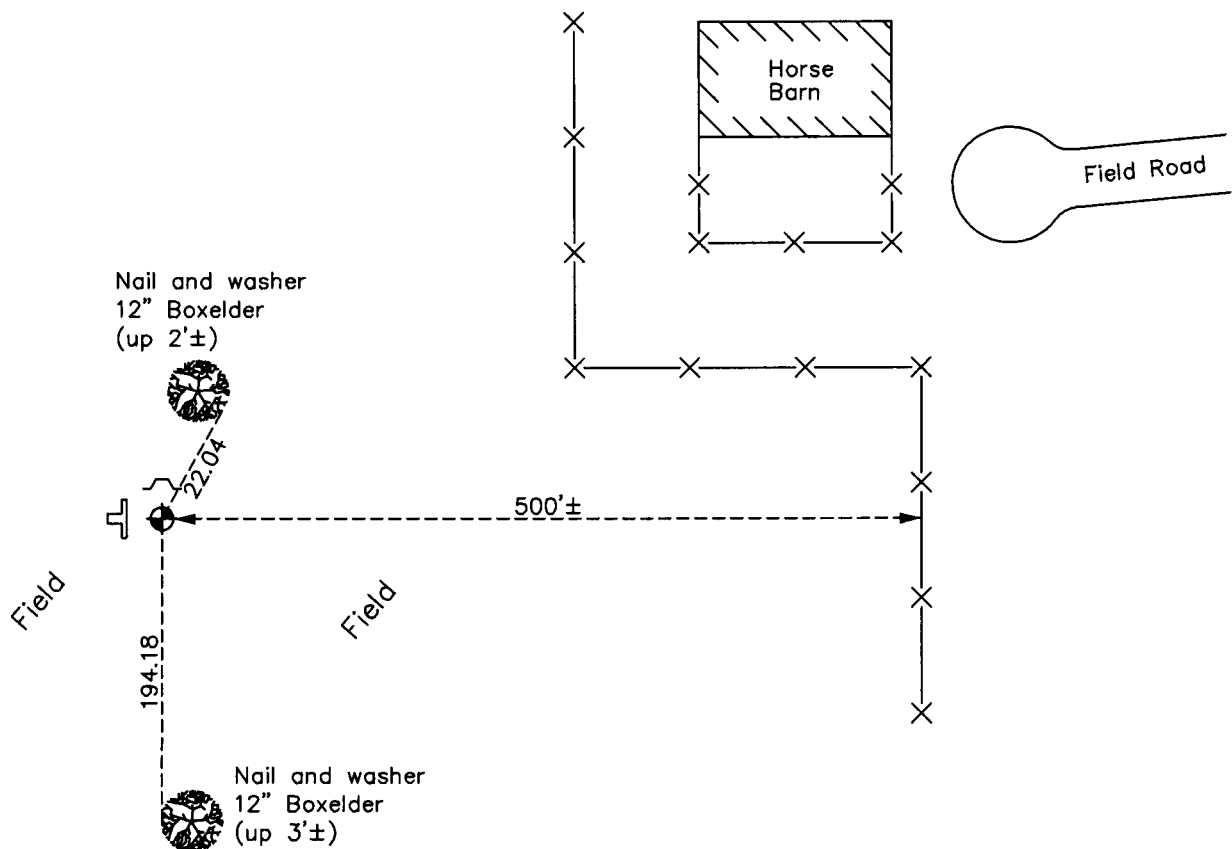
## Northeast Corner of Sec. 8 Township 33 Range 25

On the 30th day of April, 1975, the described corner was evidenced by area resurvey

and to perpetuate the location of said corner, at the exact location thereof, a permanent marker was placed consisting of a cast iron monument with a sign and post on the north side

AND on the 25th day of March, 2013, said permanent marker was found down 0.4'± with a "T" post on the west side and the ties were updated

Updated reference ties are as shown below.



Revision Date

12/30/13

N.A.D. 1983 Coordinates  
(1996 Adjustment)

County Project Coordinates

Northing 222564.2620

Easting 447614.0056

Date 12/07/02

I hereby certify that this United States public land survey monument record is correct and complete to the best of my knowledge and belief.

*[Signature]* Date 12/30/13

Larry D. Hoium, Anoka County Surveyor

Minnesota License Number 18165