

CERTIFICATE OF LOCATION OF GOVERNMENT CORNER

County of Anoka

State of Minnesota

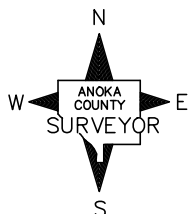
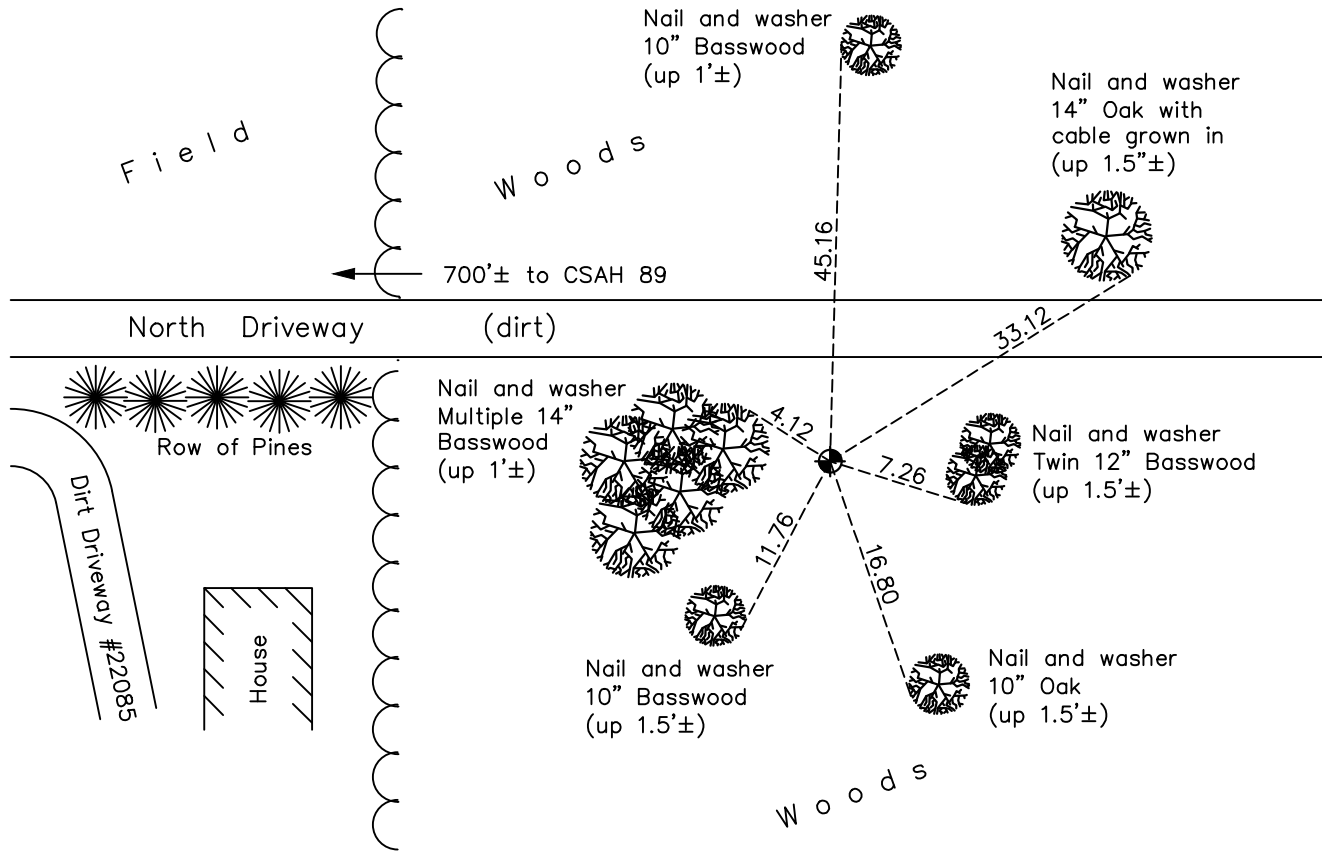
South 1/4 Corner of Sec. 5 Township 33 Range 25

On the 26th day of September, 1974, the described corner was evidenced by area resurvey

and to perpetuate the location of said corner, at the exact location thereof, a permanent marker was placed consisting of a cast iron monument

AND on the 11th day of January, 2018, said permanent marker was found and the ties were updated

Updated reference ties are as shown below.



Revision Date

4/12/18

N.A.D. 1983 Coordinates
(1996 Adjustment)

County Project Coordinates	
Northing	<u>222603.8374</u>
Easting	<u>444998.8215</u>
Date	<u>12/16/02</u>

I hereby certify that this United States public land survey monument record is correct and complete to the best of my knowledge and belief.

David M Zieglmeier Date 6/9/21

David M. Zieglmeier, Anoka County Surveyor

Minnesota License Number 46179

HISTORY OF GOVERNMENT CORNER

Page No. 29

County of Anoka

State of Minnesota

South 1/4 Corner of Sec. 5 Township 33 Range 25

CORNER HISTORY:

May 1855 - This corner was established by James M. Marsh, Deputy Surveyor. Marsh marked the position by "set quarter section post" with two bearing trees marked as accessories.

September 26, 1974 - Set cast iron monument using area resurvey. Established ties to monument.

July 19, 1976 - Found cast iron monument and updated ties.

July 17, 1979 - Found cast iron monument and updated ties.

July 30, 1982 - Found cast iron monument and updated ties.

July 2, 1985 - Found cast iron monument and updated ties.

June 13, 1989 - Found cast iron monument and updated ties.

July 8, 1994 - Found cast iron monument and updated ties.

December 16, 2002 - Established NAD 1983 (1996 adj.) Anoka County project coordinates by static GPS methods.

March 25, 2013 - Found cast iron monument and updated ties.

January 11, 2018 - Found cast iron monument flush next to a "T" post. Updated ties.