

# CERTIFICATE OF LOCATION OF GOVERNMENT CORNER

County of Anoka

State of Minnesota

Witness Corner of Sec. 6 Township 33 Range 25

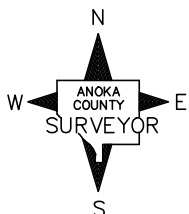
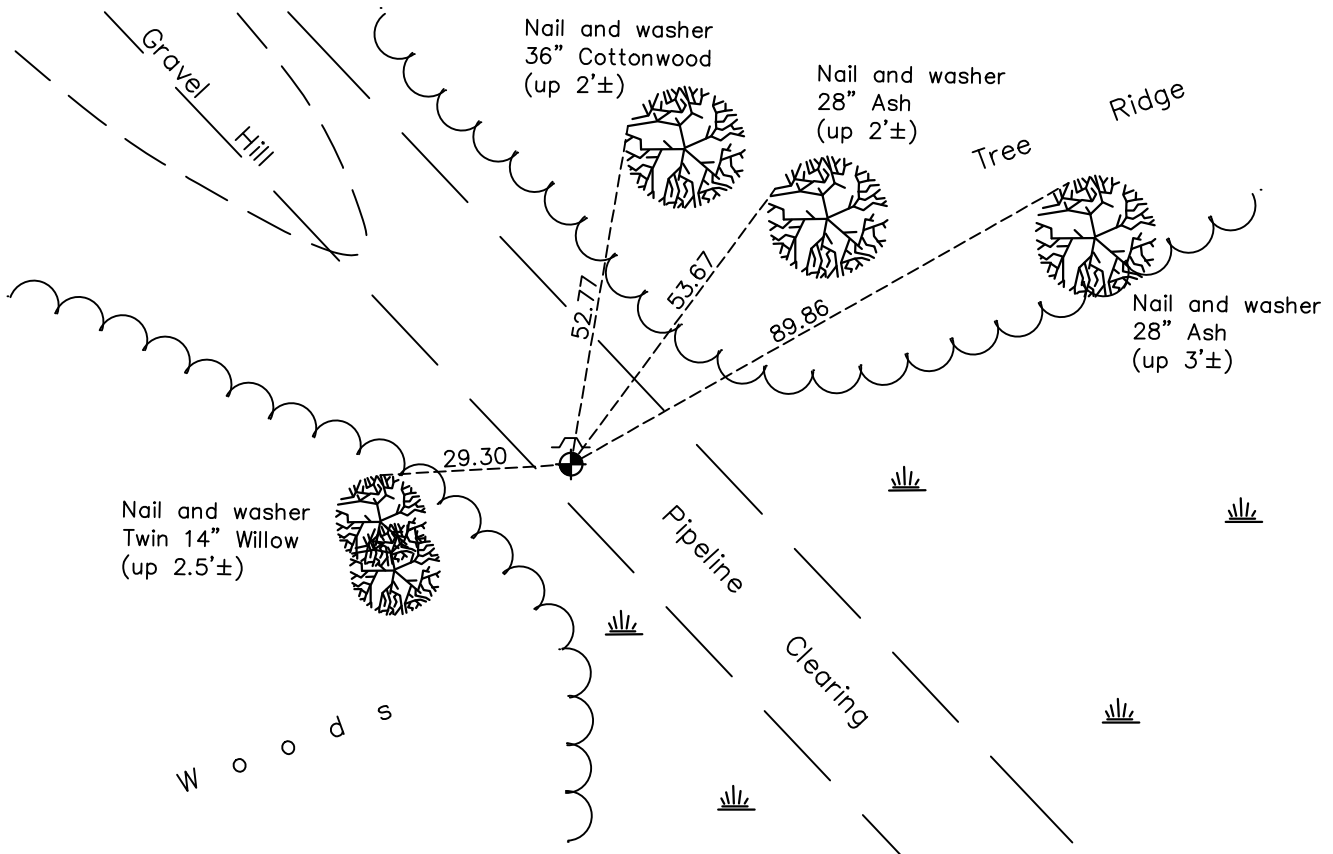
(On south line of SE 1/4)

On the 1st day of June, 1976, the described corner was evidenced by area resurvey

and to perpetuate the location of said corner, at the exact location thereof, a permanent marker was placed consisting of a cast iron monument with a sign and post on the northwest side

AND on the      day of February, 2018, said permanent marker was found flush and the ties were updated

Updated reference ties are as shown below.



Revision Date

4/12/18

N.A.D. 1983 Coordinates  
(1996 Adjustment)

County Project Coordinates	
Northing	<u>222664.4348</u>
Easting	<u>441758.3412</u>
Date	<u>1/28/03</u>

I hereby certify that this United States public land survey monument record is correct and complete to the best of my knowledge and belief.

*David M Ziegmeier* Date 6/9/21

David M. Ziegmeier, Anoka County Surveyor  
Minnesota License Number 46179

# HISTORY OF GOVERNMENT CORNER

Page No. 30A

County of Anoka

State of Minnesota

Witness Corner of Sec. 6 Township 33 Range 25  
(On south line of SE 1/4)

## **CORNER HISTORY:**

June 1, 1976 - Set cast iron monument flush using area resurvey. Established ties to monument. Set sign and post on the south side.

July 17, 1979 - Found cast iron monument and updated ties.

August 4, 1982 - Found cast iron monument and updated ties.

August 29, 1989 - Found cast iron monument and updated ties.

January 28, 2003 - Found cast iron monument w/sign and post on the north side. Updated ties. Established NAD 1983 (1996 adj.) Anoka County project coordinates by static GPS methods.

March 26, 2013 - Found cast iron monument. Verified position by VRS GPS methods. Updated ties.

February, 2018 - Found cast iron monument flush and updated ties.