

CERTIFICATE OF LOCATION OF GOVERNMENT CORNER

County of Anoka

State of Minnesota

Witness Corner of Sec. 8 Township 33 Range 25

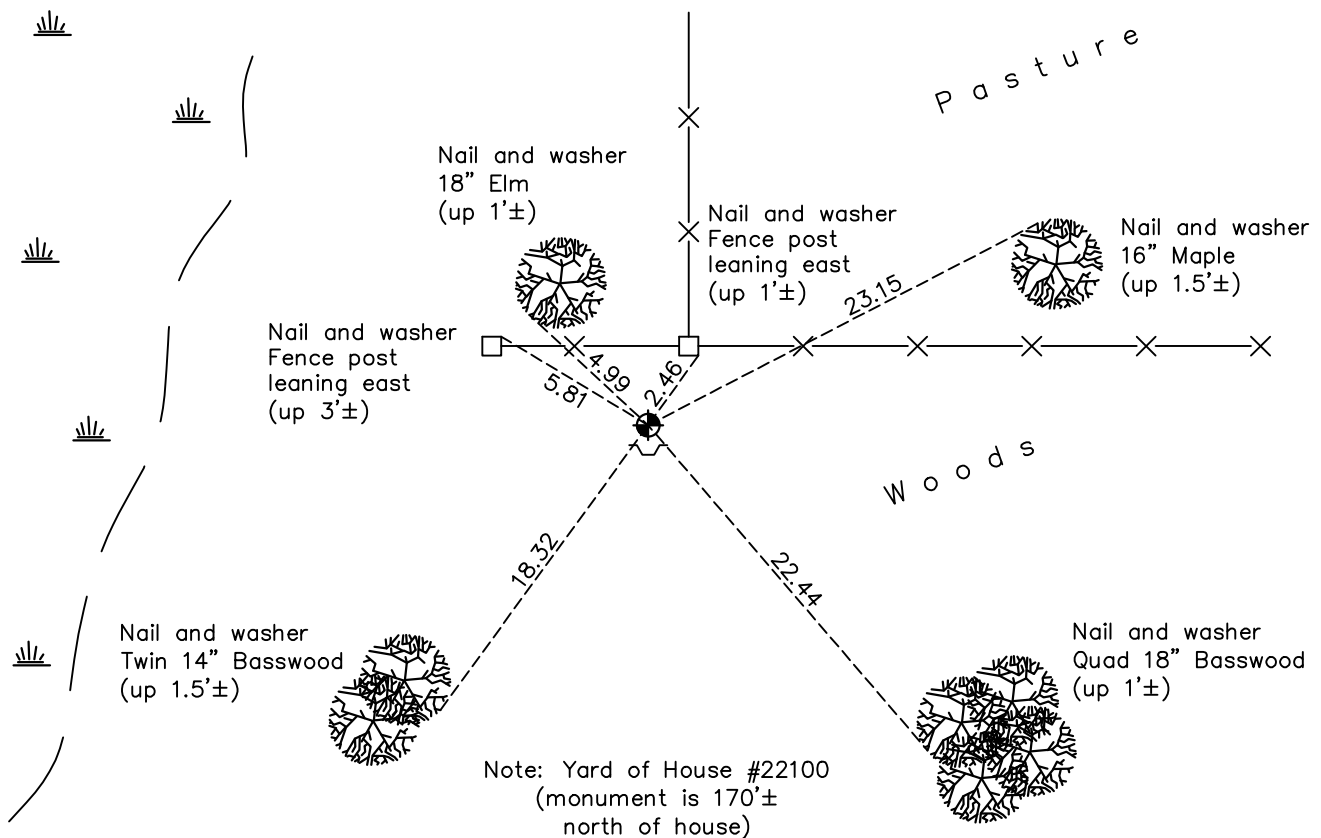
(On north line of NW 1/4)

On the 3rd day of June, 1976, the described corner was evidenced by area resurvey

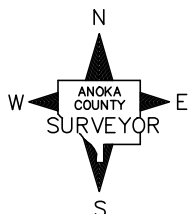
and to perpetuate the location of said corner, at the exact location thereof, a permanent marker was placed consisting of a cast iron monument with a sign and post on the south side

AND on the 26th day of March, 2018, said permanent marker was found down 0.2'± and the ties were updated

Updated reference ties are as shown below.



Note: Yard of House #22100
(monument is 170'± north of house)



Revision Date

4/12/18

N.A.D. 1983 Coordinates
(1996 Adjustment)

County Project Coordinates	
Northing	<u>222638.5495</u>
Easting	<u>443372.9888</u>
Date	<u>12/18/02</u>

I hereby certify that this United States public land survey monument record is correct and complete to the best of my knowledge and belief.

David M Zieglmeier Date 6/9/21

David M. Zieglmeier, Anoka County Surveyor

Minnesota License Number 46179

HISTORY OF GOVERNMENT CORNER

Page No. 30B

County of Anoka

State of Minnesota

Witness Corner of Sec. 8 Township 33 Range 25
(On north line of NW 1/4)

CORNER HISTORY:

June 3, 1976 - Set cast iron monument flush using area resurvey. Established ties to monument. Set sign and post on the south side.

July 17, 1979 - Found cast iron monument and updated ties.

August 4, 1982 - Found cast iron monument and updated ties.

July 16, 1985 - Found cast iron monument and updated ties.

June 13, 1989 - Found cast iron monument w/sign and post on the south side. Updated ties.

July 19, 1994 - Found cast iron monument and updated ties.

December 18, 2002 - Found cast iron monument and updated ties. Established NAD 1983 (1996 adj.) Anoka County project coordinates by static GPS methods.

March 26, 2013 - Found cast iron monument down 0.2'± w/sign and post on south side. Updated ties.

March 26, 2018 - Found cast iron monument down 0.2'± w/sign and post on south side. Updated ties.