

# CERTIFICATE OF LOCATION OF GOVERNMENT CORNER

County of Anoka

State of Minnesota

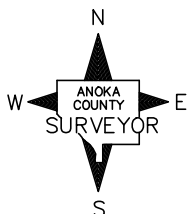
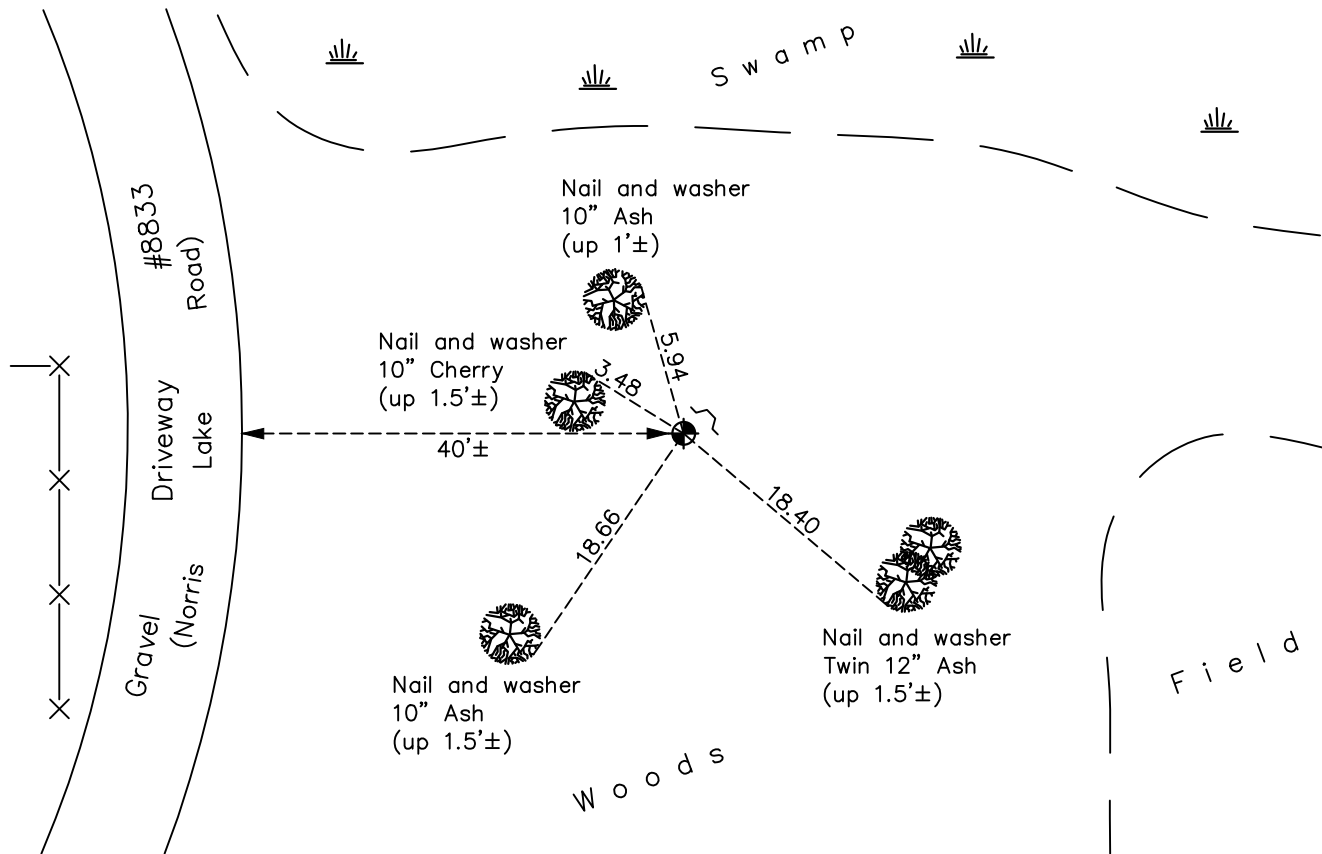
Witness Corner of Sec. 7 Township 33 Range 25  
 (On east line of NE 1/4)

On the 27th day of May, 1976, the described corner was evidenced by area resurvey

and to perpetuate the location of said corner, at the exact location thereof, a permanent marker was placed consisting of a cast iron monument with a sign and post on the northeast side

AND on the 21st day of March, 2018, said permanent marker was found flush and the ties were updated

Updated reference ties are as shown below.



Revision Date

4/12/18

N.A.D. 1983 Coordinates  
(1996 Adjustment)

County Project Coordinates	
Northing	<u>221392.1916</u>
Easting	<u>442368.9870</u>
Date	<u>1/29/03</u>

I hereby certify that this United States public land survey monument record is correct and complete to the best of my knowledge and belief.

*David M. Zieglsmeier* Date 6/9/21

David M. Zieglsmeier, Anoka County Surveyor  
 Minnesota License Number 46179

# HISTORY OF GOVERNMENT CORNER

Page No. 30C

County of Anoka

State of Minnesota

Witness Corner of Sec. 7 Township 33 Range 25  
(On east line of NE 1/4)

## **CORNER HISTORY:**

May 27, 1976 - Set cast iron monument flush using area resurvey. Established ties to monument. Set sign and post on the north side.

July 17, 1979 - Found cast iron monument and updated ties.

August 2, 1982 - Found cast iron monument and updated ties.

June 13, 1989 - Found cast iron monument w/sign and post on the northeast side. Updated ties.

July 19, 1994 - Found cast iron monument and updated ties.

January 29, 2003 - Found cast iron monument and updated ties. Established NAD 1983 (1996 adj.) Anoka County project coordinates by static GPS methods.

March 26, 2013 - Found cast iron monument and updated ties.

March 21, 2018 - Found cast iron monument flush and updated ties.