

# CERTIFICATE OF LOCATION OF GOVERNMENT CORNER

County of Anoka

State of Minnesota

## Witness Corner of Sec. 6 Township 33 Range 25

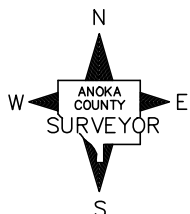
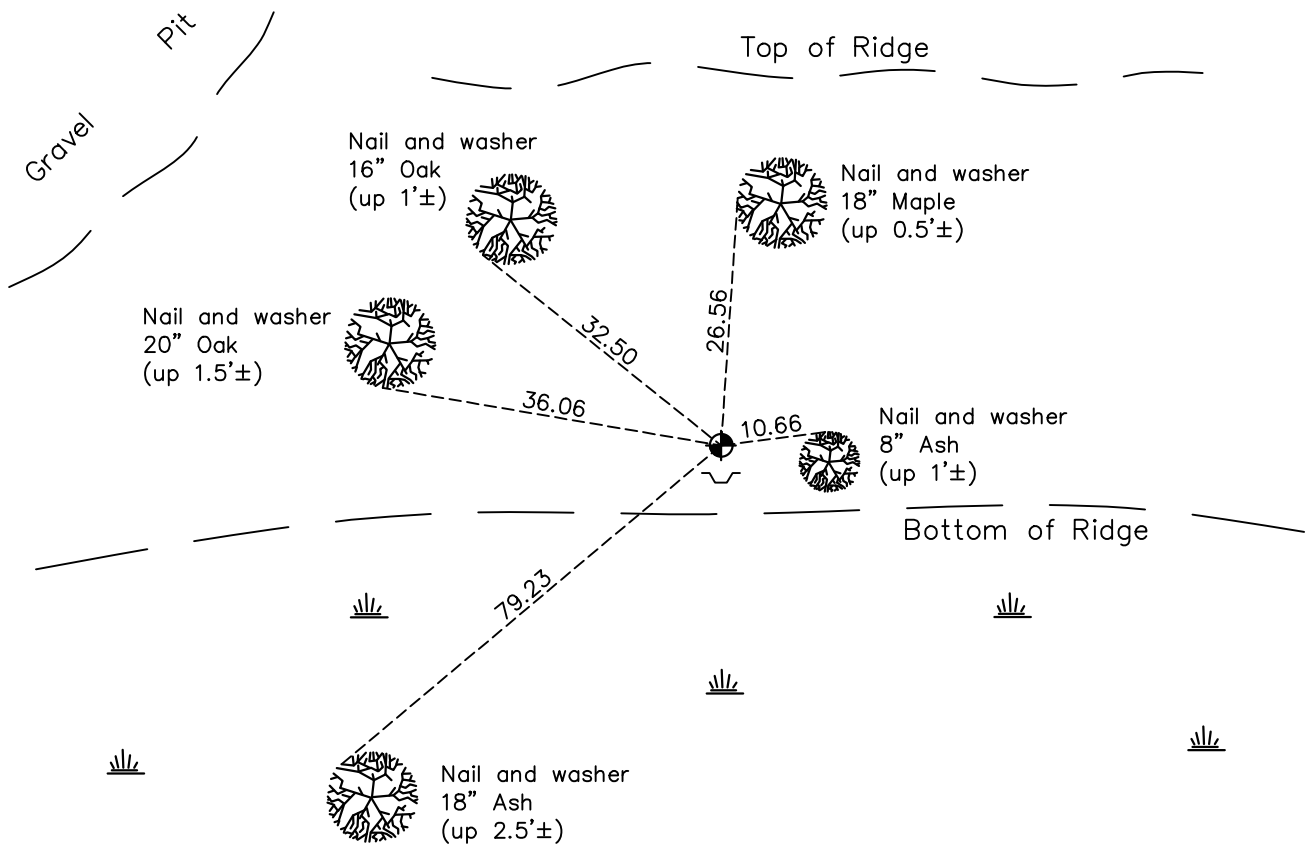
(On east line of SE 1/4)

On the 2nd day of June, 1976, the described corner was evidenced by area resurvey

and to perpetuate the location of said corner, at the exact location thereof, a permanent marker was placed consisting of a cast iron monument with a sign and post on the south side

AND on the      day of March, 2018, said permanent marker was found up 0.6'± and the ties were updated

Updated reference ties are as shown below.



Revision Date

4/12/18

N.A.D. 1983 Coordinates  
(1996 Adjustment)

County Project Coordinates	
Northing	<u>223273.9467</u>
Easting	<u>442374.0105</u>
Date	<u>12/18/02</u>

I hereby certify that this United States public land survey monument record is correct and complete to the best of my knowledge and belief.

*David M. Zieglmeier* Date 6/9/21

David M. Zieglmeier, Anoka County Surveyor

Minnesota License Number 46179

# HISTORY OF GOVERNMENT CORNER

Page No. 30D

County of Anoka

State of Minnesota

Witness Corner of Sec. 6 Township 33 Range 25  
(On east line of SE 1/4)

## **CORNER HISTORY:**

June 2, 1976 - Set cast iron monument flush using area resurvey. Established ties to monument. Set sign and post on the south side.

July 17, 1979 - Found cast iron monument and updated ties.

August 2, 1982 - Found cast iron monument and updated ties.

June 19, 1989 - Found cast iron monument and updated ties.

July 22, 1994 - Found cast iron monument and updated ties.

December 18, 2002 - Found cast iron monument and updated ties. Established NAD 1983 (1996 adj.) Anoka County project coordinates by static GPS methods.

March 26, 2013 - Found cast iron monument up 0.6'±. Verified position by VRS GPS methods. Updated ties.

March, 2018 - Found cast iron monument up 0.6'± and updated ties.