

CERTIFICATE OF LOCATION OF GOVERNMENT CORNER

County of Anoka

State of Minnesota

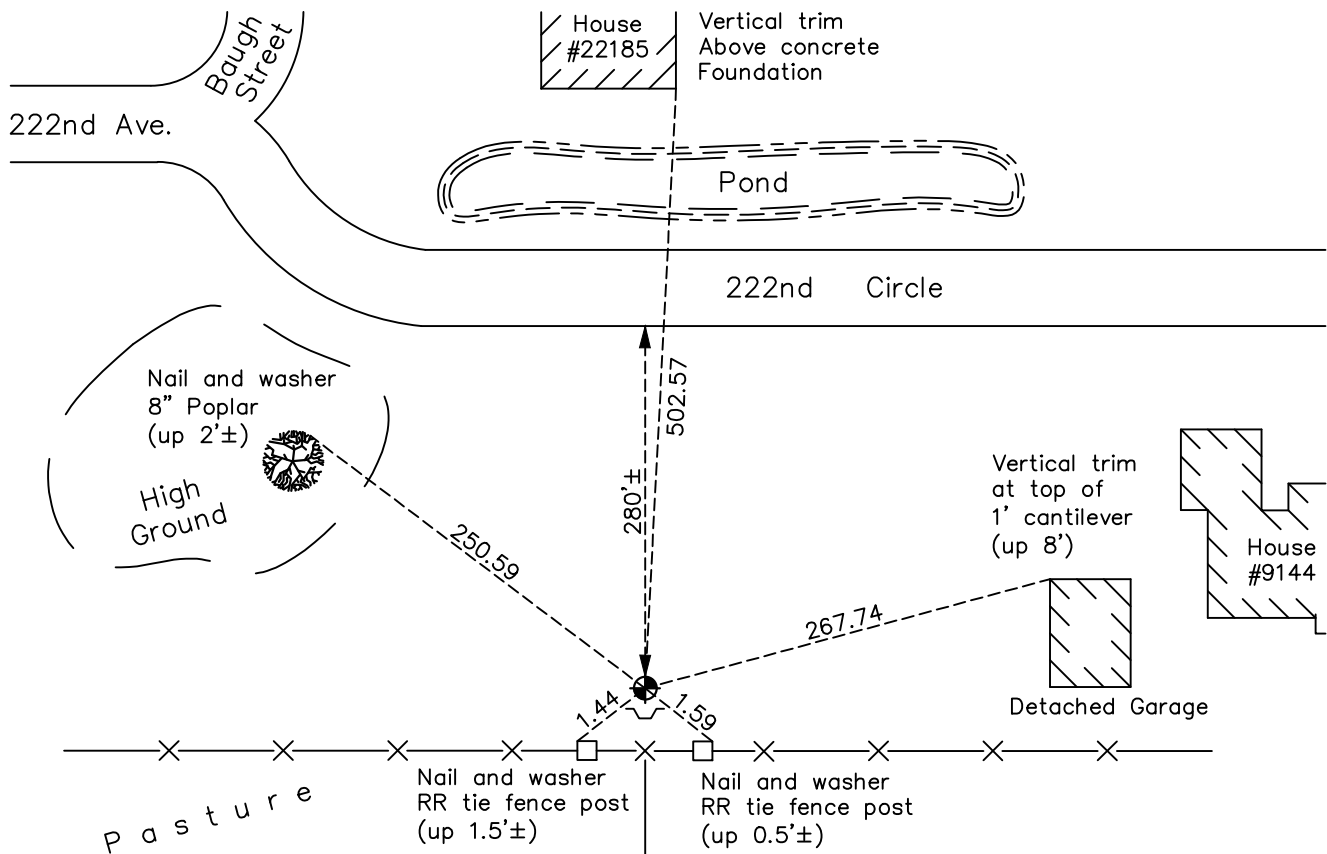
South 1/4 Corner of Sec. 6 Township 33 Range 25

On the 10th day of April, 1963, the described corner was evidenced by a 1"X1" iron bar

and to perpetuate the location of said corner, at the exact location thereof, a permanent marker was placed consisting of a cast iron monument with a sign and post on the south side

AND on the 11th day of January, 2018, said permanent marker was found flush and the ties were updated

Updated reference ties are as shown below.



Revision Date

4/12/18

N.A.D. 1983 Coordinates
(1996 Adjustment)

County Project Coordinates	
Northing	<u>222679.1502</u>
Easting	<u>439792.3327</u>
Date	<u>2/05/03</u>

I hereby certify that this United States public land survey monument record is correct and complete to the best of my knowledge and belief.

David M. Zieglmeier Date 6/9/21

David M. Zieglmeier, Anoka County Surveyor

Minnesota License Number 46179

HISTORY OF GOVERNMENT CORNER

Page No. 31

County of Anoka

State of Minnesota

South 1/4 Corner of Sec. 6 Township 33 Range 25

CORNER HISTORY:

May 1855 - This corner was established by James M. Marsh, Deputy Surveyor. Marsh marked the position by "set quarter section post" with two bearing trees marked as accessories.

April 10, 1963 - Found 1" square iron bridge spike and rock as described in old survey notes. Updated ties.

August 16, 1965 - Found 1" square iron bridge spike and rock. Updated ties.

July 8, 1969 - Found 1" square iron bridge spike and rock. Updated ties.

April 19, 1973 - Placed steel sign post with warning sign.

August 6, 1973 - Found 1" square iron bridge spike and rock. Updated ties.

August 20, 1975 - Replaced 1" square iron bridge spike and rock with a cast iron monument.

July 17, 1979 - Found cast iron monument. Corner ties unavailable.

August 4, 1982 - Found cast iron monument. Corner ties unavailable.

September 3, 1982 - Found cast iron monument and set transit ties.

July 16, 1985 - Found cast iron monument and updated ties.

June 15, 1989 - Found cast iron monument and updated ties.

July 12, 1994 - Found cast iron monument and updated ties.

February 5, 2003 - Found cast iron monument and updated ties. Established NAD 1983 (1996 adj.) Anoka County project coordinates by static GPS methods.

November 15, 2013 - Found cast iron monument flush w/ sign and post on the south side. Verified position by VRS GPS methods. Updated ties.

January 11, 2018 - Found cast iron monument flush. Verified position by VRS GPS methods. Updated ties.