

CERTIFICATE OF LOCATION OF GOVERNMENT CORNER

County of Anoka

State of Minnesota

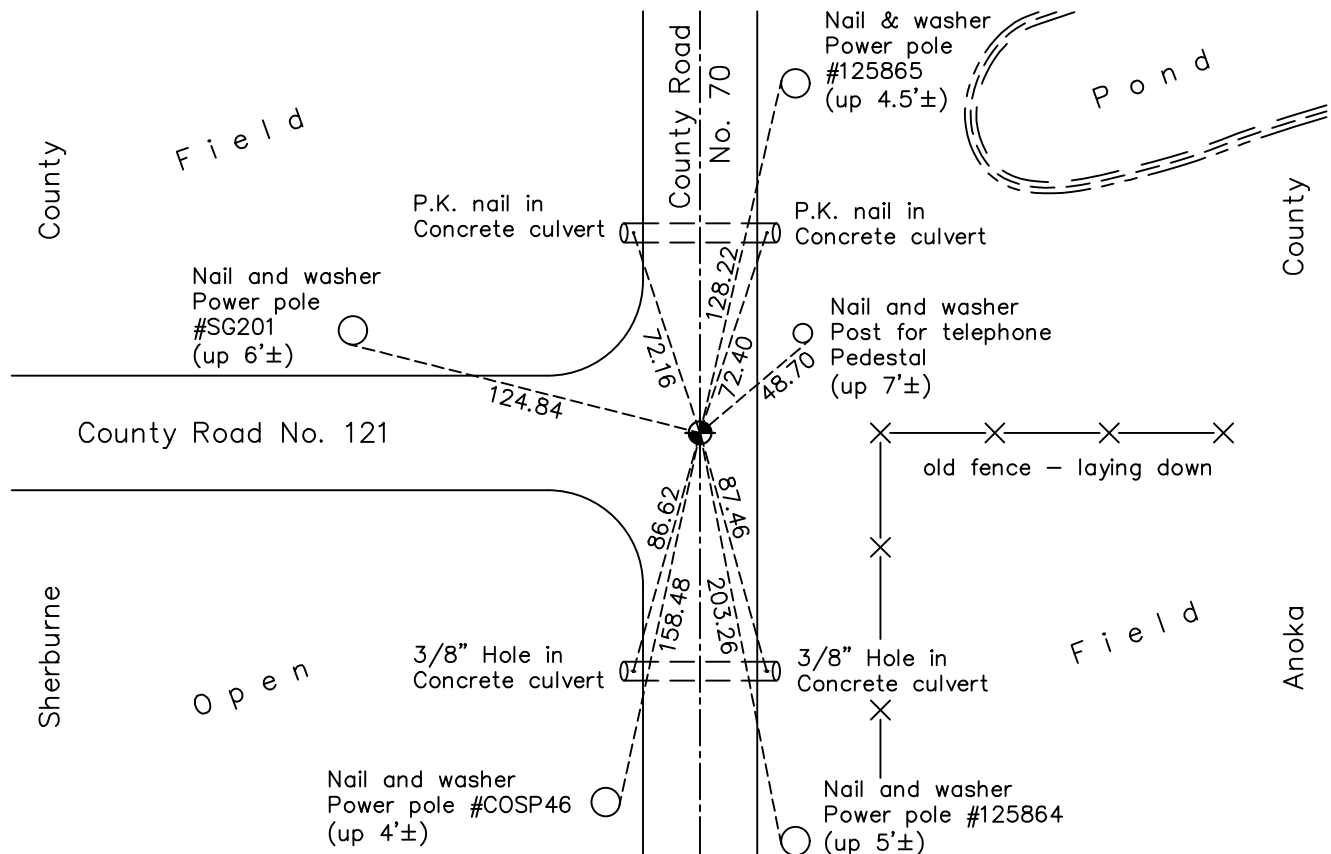
Southwest Corner of Sec. 6 Township 33 Range 25

On the 5th day of March, 1963, the described corner was evidenced by a cast iron monument set by Don Pepper

and to perpetuate the location of said corner, at the exact location thereof, a permanent marker was placed consisting of a Sherburne County cast iron monument

AND on the 9th day of January, 2018, said permanent marker was found flush and the ties were updated

Updated reference ties are as shown below.



ANOKA COUNTY SURVEYOR

Revision Date

4/13/18

N.A.D. 1983 Coordinates
(1996 Adjustment)

County Project Coordinates	
Northing	<u>222762.1897</u>
Easting	<u>437456.7703</u>
Date	<u>8/21/02</u>

I hereby certify that this United States public land survey monument record is correct and complete to the best of my knowledge and belief.

David M Zieglmeier Date 6/9/21

David M. Zieglmeier, Anoka County Surveyor

Minnesota License Number 46179

HISTORY OF GOVERNMENT CORNER

Page No. 32

County of Anoka

State of Minnesota

Southwest Corner of Sec. 6 Township 33 Range 25

CORNER HISTORY:

September 1849 - This corner was established by Theodore Conkey, Deputy Surveyor. Conkey marked the position by "set post corner sections 1, 12, 6 and 7" with four bearing trees marked as accessories.

March 5, 1963 - Found Sherburne County cast iron monument down 0.3'± set by Donn Pepper. Updated ties.

August 9, 1965 - Found cast iron monument down 1.1'± and updated ties.

July 8, 1969 - Found cast iron monument down 1.1'± and updated ties.

July 14, 1969 - Replaced cast iron monument down 1.1'± with a cast iron monument flush.

July 23, 1973 - Found cast iron monument and updated ties.

July 19, 1976 - Found cast iron monument and updated ties.

July 10, 1979 - Found cast iron monument and updated ties.

July 30, 1982 - Found cast iron monument and updated ties.

June 27, 1985 - Found cast iron monument and updated ties.

August 23, 1988 - Found cast iron monument and updated ties.

June 28, 1994 - Found cast iron monument and updated ties.

August 21, 2002 - Established NAD 1983 (1996 adj.) Anoka County project coordinates by static GPS methods.

August 30, 2004 - Found cast iron monument and updated ties.

March 28, 2013 - Found cast iron monument and updated ties.

January 9, 2018 - Found Sherburne County cast iron monument flush. Verified position by VRS GPS methods. Updated ties.