

CERTIFICATE OF LOCATION OF GOVERNMENT CORNER

County of Anoka

State of Minnesota

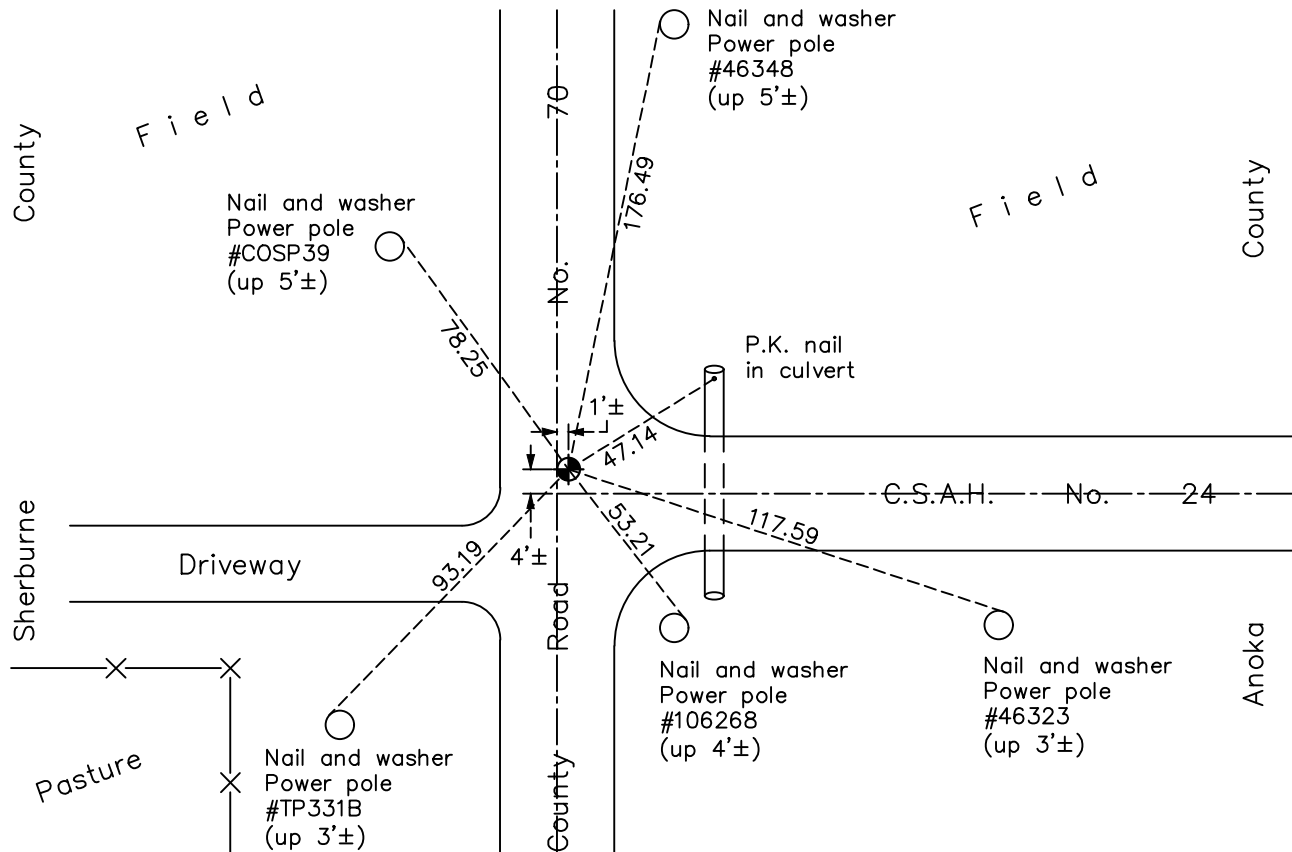
West 1/4 Corner of Sec. 7 Township 33 Range 25

On the 15th day of January, 1964, the described corner was evidenced by ties from Sherburne County Highway Department

and to perpetuate the location of said corner, at the exact location thereof, a permanent marker was placed consisting of a cast iron monument

AND on the 9th day of January, 2018, said permanent marker was found and the ties were updated

Updated reference ties are as shown below.



Revision Date

4/13/18

N.A.D. 1983 Coordinates
(1996 Adjustment)

County Project Coordinates	
Northing	<u>220107.7027</u>
Easting	<u>437427.7138</u>
Date	<u>8/21/02</u>

I hereby certify that this United States public land survey monument record is correct and complete to the best of my knowledge and belief.

David M. Ziegler Date 6/9/21

David M. Ziegler, Anoka County Surveyor

Minnesota License Number 46179

HISTORY OF GOVERNMENT CORNER

Page No. 33

County of Anoka

State of Minnesota

West 1/4 Corner of Sec. 7 Township 33 Range 25

CORNER HISTORY:

September 1849 - This corner was established by Theodore Conkey, Deputy Surveyor. Conkey marked the position by "set post for quarter section corner" with two bearing trees marked as accessories.

January 15, 1964 - Set P.K. spike using Sherburne County highway department ties. Established ties to P.K. spike.

August 9, 1965 - Found P.K. spike and updated ties.

July 8, 1969 - Found cast iron monument marked quarter corner reg. #5333 down 0.3'± in road. Monument is 3.6' north and 0.2' east of center line. Updated ties.

July 14, 1969 - Replaced solid cast iron monument #5333 with a removable top cast iron monument flush.

July 23, 1973 - Found cast iron monument and updated ties.

July 19, 1976 - Found cast iron monument and updated ties.

July 9, 1979 - Found cast iron monument and updated ties.

July 30, 1982 - Found cast iron monument and updated ties.

June 27, 1985 - Found cast iron monument and updated ties.

August 23, 1988 - Found cast iron monument down and raised flush. Updated ties.

June 28, 1994 - Found cast iron monument and updated ties.

August 21, 2002 - Established NAD 1983 (1996 adj.) Anoka County project coordinates by static GPS methods.

September 23, 2002 - Found cast iron monument and updated ties.

August 30, 2004 - Found cast iron monument and updated ties.

March 29, 2013 - Found cast iron monument. Verified position by VRS GPS methods. Updated ties.

January 9, 2018 - Found cast iron monument. Verified position by VRS GPS methods. Updated ties.