

# CERTIFICATE OF LOCATION OF GOVERNMENT CORNER

County of Anoka

State of Minnesota

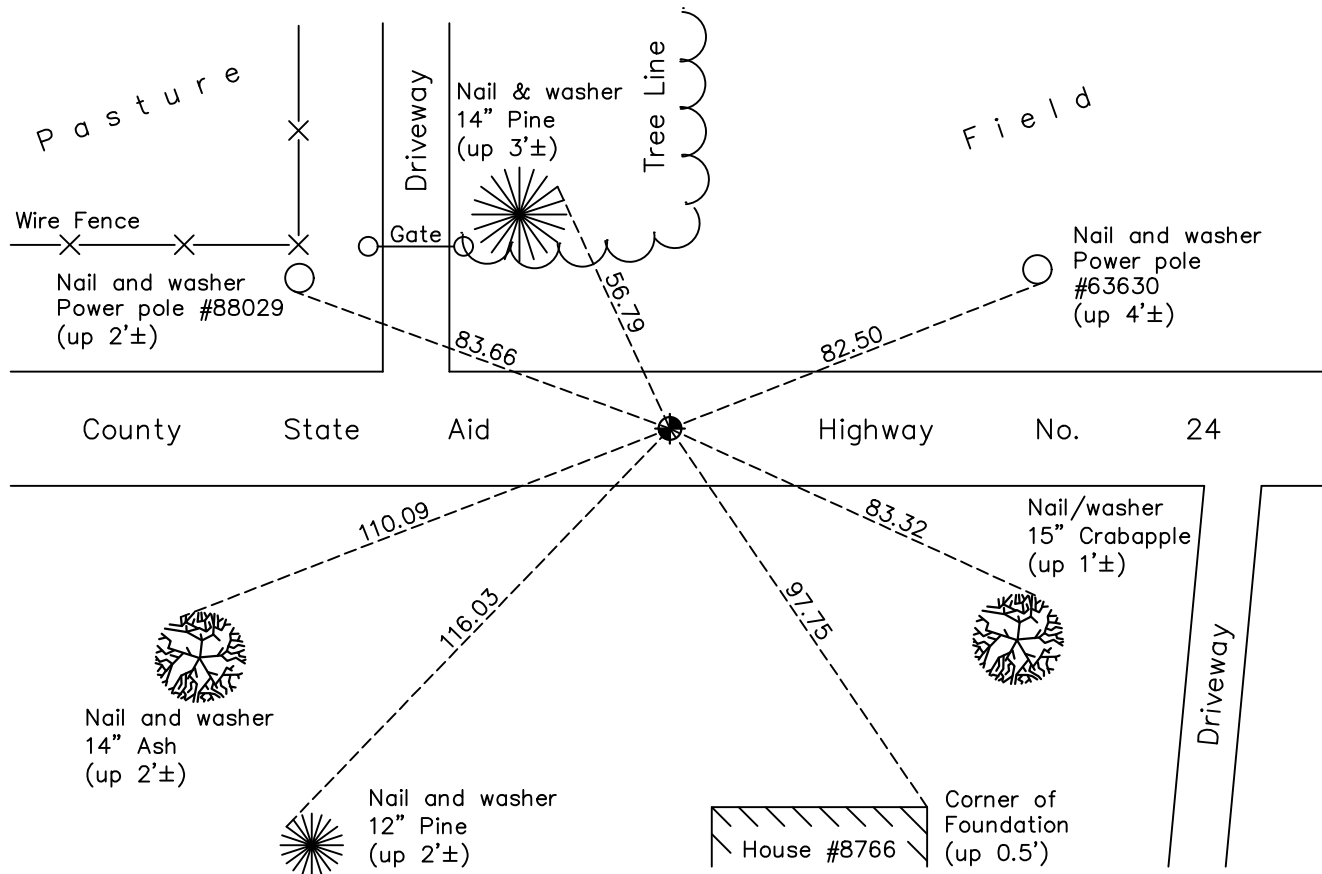
## West 1/4 Corner of Sec. 8 Township 33 Range 25

On the 4th day of October, 1974, the described corner was evidenced by area resurvey

and to perpetuate the location of said corner, at the exact location thereof, a permanent marker was placed consisting of a cast iron monument

AND on the 22nd day of February, 2018, said permanent marker was found flush and the ties were updated

Updated reference ties are as shown below.



Revision Date

4/13/18

N.A.D. 1983 Coordinates  
(1996 Adjustment)

County Project Coordinates	
Northing	<u>220032.7158</u>
Easting	<u>442346.0737</u>
Date	<u>8/21/02</u>

I hereby certify that this United States public land survey monument record is correct and complete to the best of my knowledge and belief.

*David M Zieglmeier* Date 6/9/21

David M. Zieglmeier, Anoka County Surveyor

Minnesota License Number 46179

# HISTORY OF GOVERNMENT CORNER

Page No. 34

County of Anoka

State of Minnesota

West 1/4 Corner of Sec. 8 Township 33 Range 25

## **CORNER HISTORY:**

May 1855 - This corner was established by James M. Marsh, Deputy Surveyor. Marsh marked the position by "set quarter section post" with two bearing trees marked as accessories.

October 4, 1974 - Set cast iron monument using area resurvey. Established ties to monument.

July 19, 1976 - Found cast iron monument and updated ties.

July 9, 1979 - Found cast iron monument and updated ties.

August 2, 1982 - Found cast iron monument and updated ties.

June 27, 1985 - Found cast iron monument and updated ties.

August 26, 1988 - Found cast iron monument and updated ties.

June 28, 1994 - Found cast iron monument and updated ties.

August 21, 2002 - Established NAD 1983 (1996 adj.) Anoka County project coordinates by static GPS methods.

September 23, 2002 - Found cast iron monument and updated ties.

March 26, 2013 - Found cast iron monument down 0.1'±. Verified position by VRS GPS methods. Updated ties.

May 16, 2017 - Found cast iron monument down 0.1'±, set construction ties, verified position by VRS GPS methods and updated corner ties prior to construction. Removed monument.

August 10, 2017 - Set cast iron monument flush after construction using static GPS methods. Updated ties.

September 28, 2017 - Set new cast iron monument flush using static GPS methods. Verified position by VRS GPS methods. Updated ties.

February 22, 2018 - Found cast iron monument flush. Verified position by VRS GPS methods. Updated ties.