

CERTIFICATE OF LOCATION OF GOVERNMENT CORNER

County of Anoka

State of Minnesota

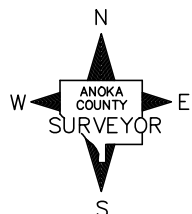
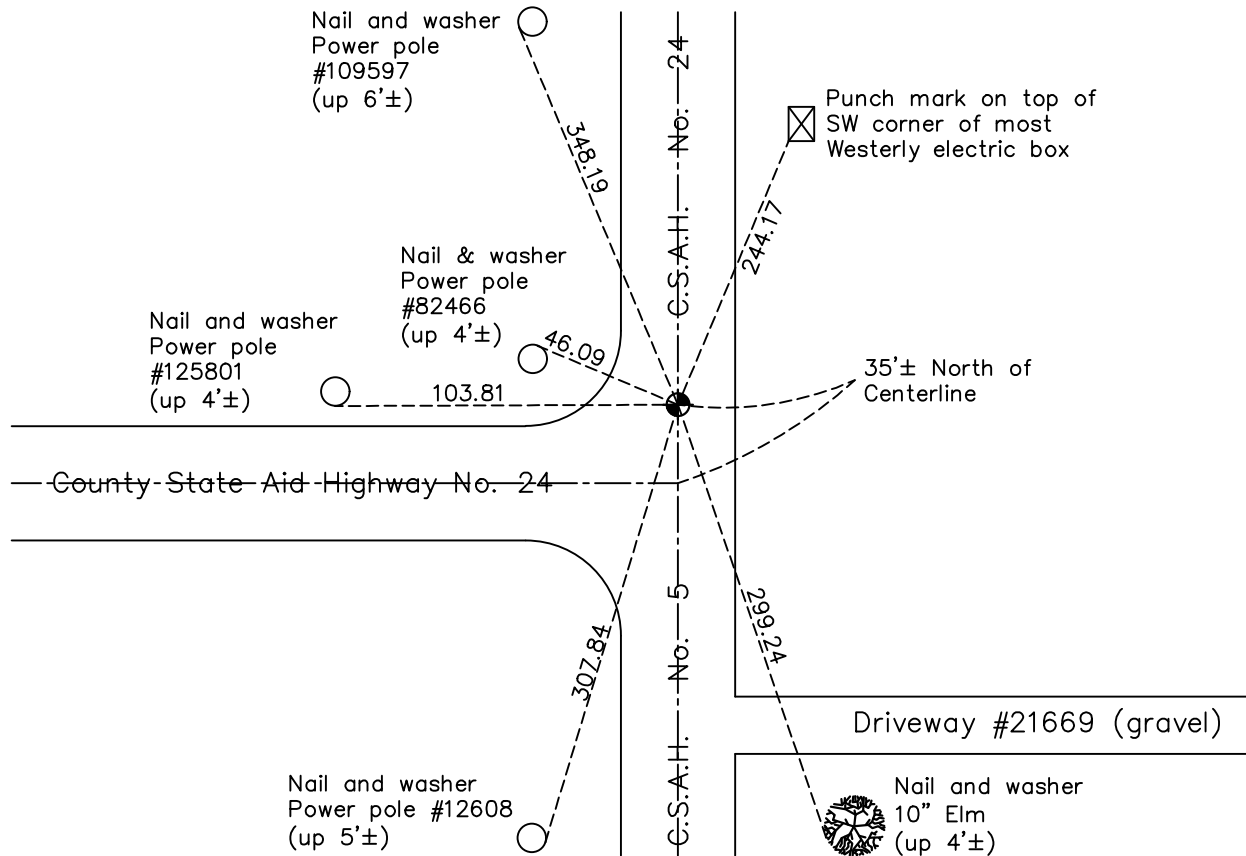
East 1/4 Corner of Sec. 8 Township 33 Range 25

On the 4th day of October, 1974, the described corner was evidenced by area resurvey

and to perpetuate the location of said corner, at the exact location thereof, a permanent marker was placed consisting of a cast iron monument

AND on the 22nd day of February, 2018, said permanent marker was found flush and the ties were updated

Updated reference ties are as shown below.



Revision Date

4/13/18

N.A.D. 1983 Coordinates
(1996 Adjustment)

County Project Coordinates	
Northing	219948.0259
Easting	447577.3756
Date	8/21/02

I hereby certify that this United States public land survey monument record is correct and complete to the best of my knowledge and belief.

David M Zieglermeier Date 6/9/21

David M. Zieglermeier, Anoka County Surveyor

Minnesota License Number 46179

HISTORY OF GOVERNMENT CORNER

Page No. 35

County of Anoka

State of Minnesota

East 1/4 Corner of Sec. 8 Township 33 Range 25

CORNER HISTORY:

May 1855 - This corner was established by James M. Marsh, Deputy Surveyor. Marsh marked the position by "set quarter section post" with one bearing tree marked as an accessory.

October 4, 1974 - Set cast iron monument using area resurvey. Established ties to monument. Set P.K. nails 2.00' north and east.

July 19, 1976 - Found cast iron monument and updated ties.

July 9, 1979 - Found cast iron monument and updated ties.

August 6, 1982 - Found cast iron monument and updated ties.

June 27, 1985 - Found cast iron monument and updated ties.

August 25, 1988 - Found cast iron monument and updated ties.

June 27, 1994 - Found cast iron monument and updated ties.

April 21, 1997 - Found cast iron monument and set construction ties.

November 3, 1998 - Reset cast iron monument and updated ties.

August 21, 2002 - Established NAD 1983 (1996 adj.) Anoka County project coordinates by static GPS methods.

March 26, 2013 - Found cast iron monument flush. Verified position by VRS GPS methods. Updated ties.

February 22, 2018 - Found cast iron monument flush. Verified position by VRS GPS methods. Updated ties.