

CERTIFICATE OF LOCATION OF GOVERNMENT CORNER

County of Anoka

State of Minnesota

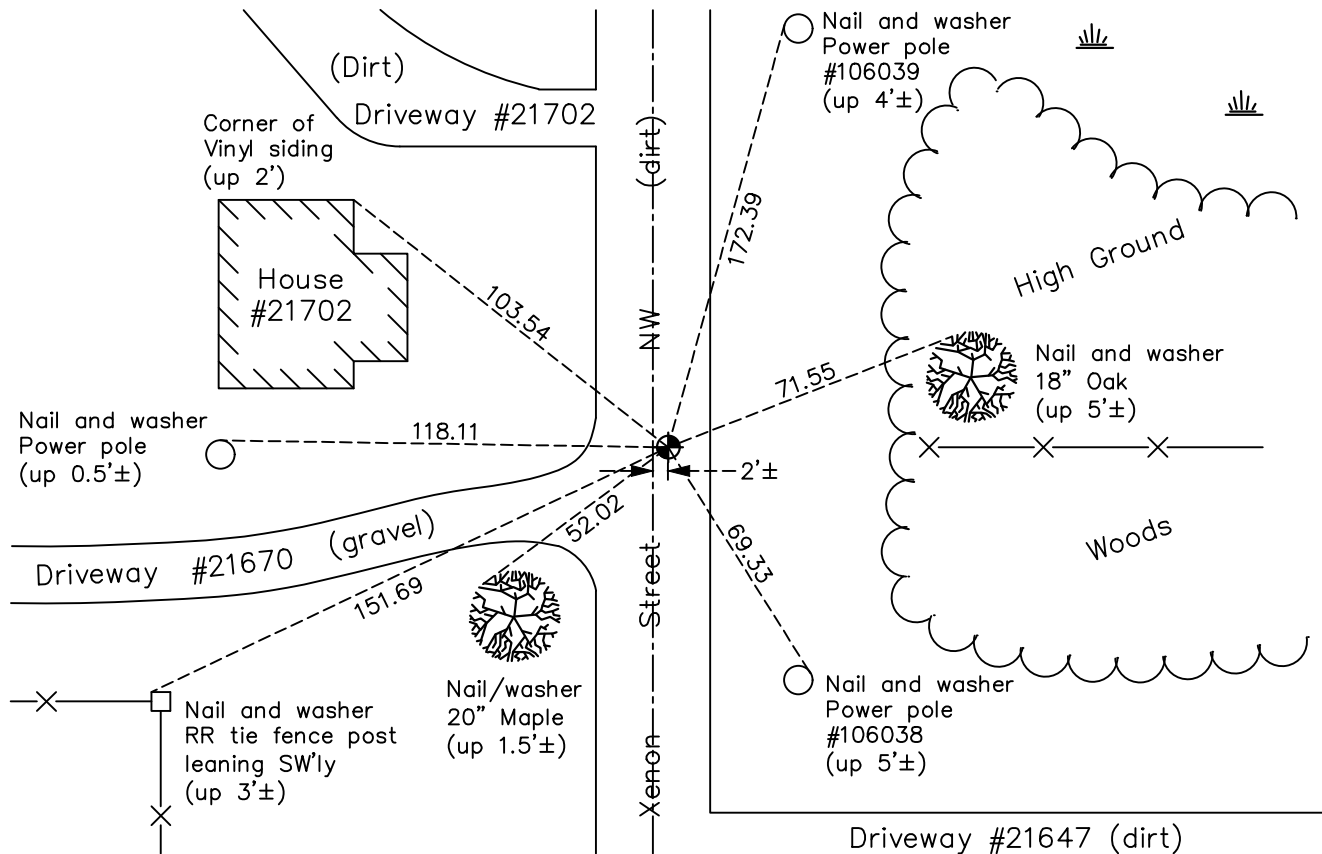
West 1/4 Corner of Sec. 11 Township 33 Range 25

On the 21st day of August, 1974, the described corner was evidenced by area resurvey

and to perpetuate the location of said corner, at the exact location thereof, a permanent marker was placed consisting of a cast iron monument

AND on the 21th day of March, 2018, said permanent marker was found down 1'± and the ties were updated

Updated reference ties are as shown below.



Revision Date

4/13/18

N.A.D. 1983 Coordinates
(1996 Adjustment)

| County Project Coordinates | |
|----------------------------|-------------|
| Northing | 219866.6738 |
| Easting | 458153.5370 |
| Date | 9/25/02 |

I hereby certify that this United States public land survey monument record is correct and complete to the best of my knowledge and belief.

David M. Zieglmeier Date 6/9/21

David M. Zieglmeier, Anoka County Surveyor

Minnesota License Number 46179

HISTORY OF GOVERNMENT CORNER

Page No. 37

County of Anoka

State of Minnesota

West 1/4 Corner of Sec. 11 Township 33 Range 25

CORNER HISTORY:

May 1855 - This corner was established by James M. Marsh, Deputy Surveyor. Marsh marked the position by "set quarter section post" with two bearing trees marked as accessories.

August 21, 1974 - Set cast iron monument down 0.4'± using area resurvey. Established ties to monument.

July 12, 1979 - Found cast iron monument and updated ties.

August 2, 1982 - Found cast iron monument and updated ties.

June 28, 1985 - Found cast iron monument and updated ties.

September 1, 1988 - Found cast iron monument and updated ties.

July 11, 1994 - Found cast iron monument and updated ties.

September 25, 2002 - Established NAD 1983 (1996 adj.) Anoka County project coordinates by static GPS methods.

September 30, 2002 - Found cast iron monument and updated ties.

October 17, 2013 - Found cast iron monument down 1'±. Verified position by VRS GPS methods. Updated ties.

March 21, 2018 - Found cast iron monument down 1'±. Verified position by VRS GPS methods. Updated ties.