

CERTIFICATE OF LOCATION OF GOVERNMENT CORNER

County of Anoka

State of Minnesota

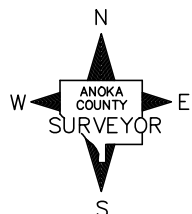
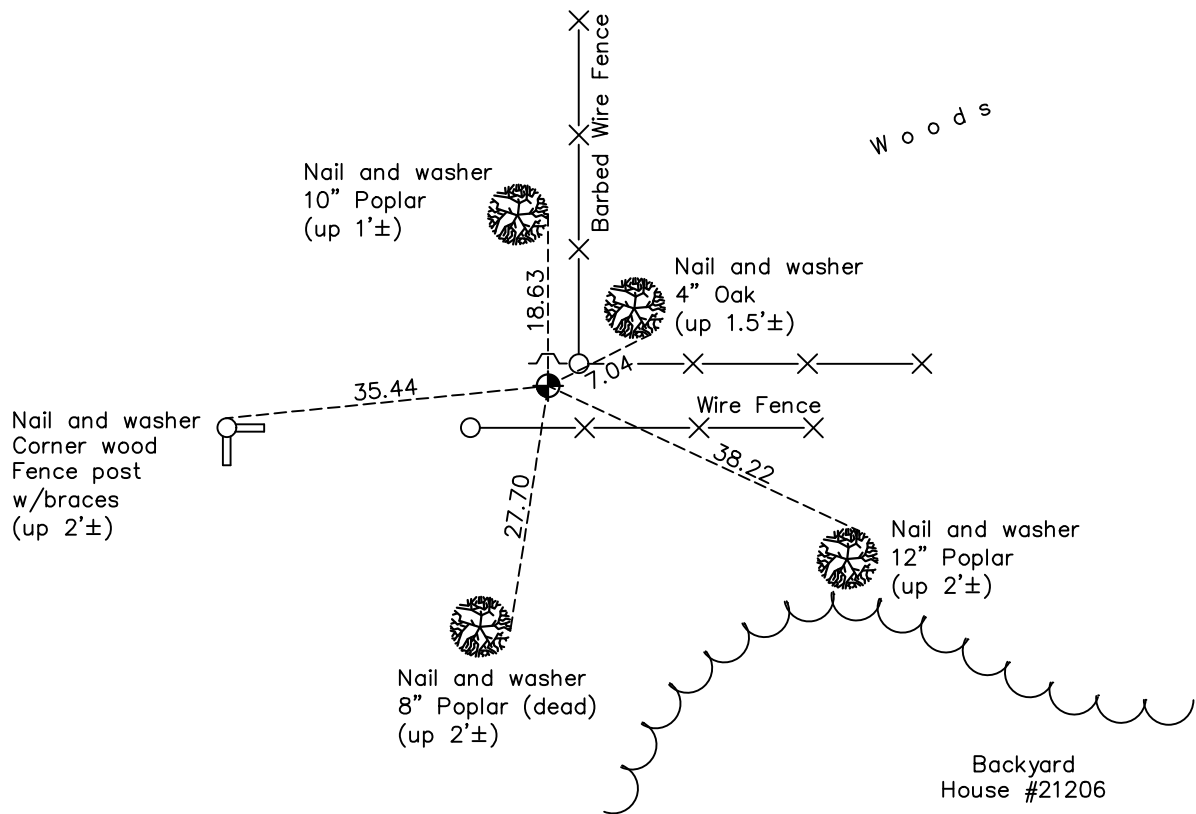
North $\frac{1}{4}$ Corner of Sec. 13 Township 33 Range 25

On the 5th day of May, 1967, the described corner was evidenced by area resurvey

and to perpetuate the location of said corner, at the exact location thereof, a permanent marker was placed consisting of a cast iron monument with a sign and post on the north side

AND on the 19th day of January, 2018, said permanent marker was found up 0.3'± and the ties were updated

Updated reference ties are as shown below.



Revision Date

4/12/18

N.A.D. 1983 Coordinates
(1996 Adjustment)

County Project Coordinates	
Northing	<u>217146.0275</u>
Easting	<u>466025.6606</u>
Date	<u>12/10/02</u>

I hereby certify that this United States public land survey monument record is correct and complete to the best of my knowledge and belief.

David M Zieglmeier Date 6/9/21

David M. Zieglmeier, Anoka County Surveyor

Minnesota License Number 46179

HISTORY OF GOVERNMENT CORNER

Page No. 40

County of Anoka

State of Minnesota

North 1/4 Corner of Sec. 13 Township 33 Range 25

CORNER HISTORY:

May 1855 - This corner was established by James M. Marsh, Deputy Surveyor. Marsh marked the position by "set quarter section post" with two bearing trees marked as accessories.

May 5, 1967 - Set cast iron monument flush using area resurvey. Monument is 1.5' west and 1.5' south of fence corner. Established ties to monument.

July 16, 1969 - Found cast iron monument 1.5' west and 0.5' south of fence corner. Updated ties.

August 1, 1973 - Found cast iron monument and updated ties.

July 19, 1976 - Found cast iron monument and updated ties.

July 16, 1979 - Found cast iron monument and updated ties.

August 6, 1982 - Found cast iron monument and updated ties.

July 11, 1985 - Found cast iron monument and updated ties.

July 7, 1989 - Found cast iron monument and updated ties.

July 20, 1994 - Found cast iron monument and updated ties.

December 10, 2002 - Found cast iron monument w/sign and post on the north side. Updated ties. Established NAD 1983 (1996 adj.) Anoka County project coordinates by static GPS methods.

April 19, 2013 - Found cast iron monument and updated ties.

January 19, 2018 - Found cast iron monument up 0.3'± and updated ties.