

# CERTIFICATE OF LOCATION OF GOVERNMENT CORNER

County of Anoka

State of Minnesota

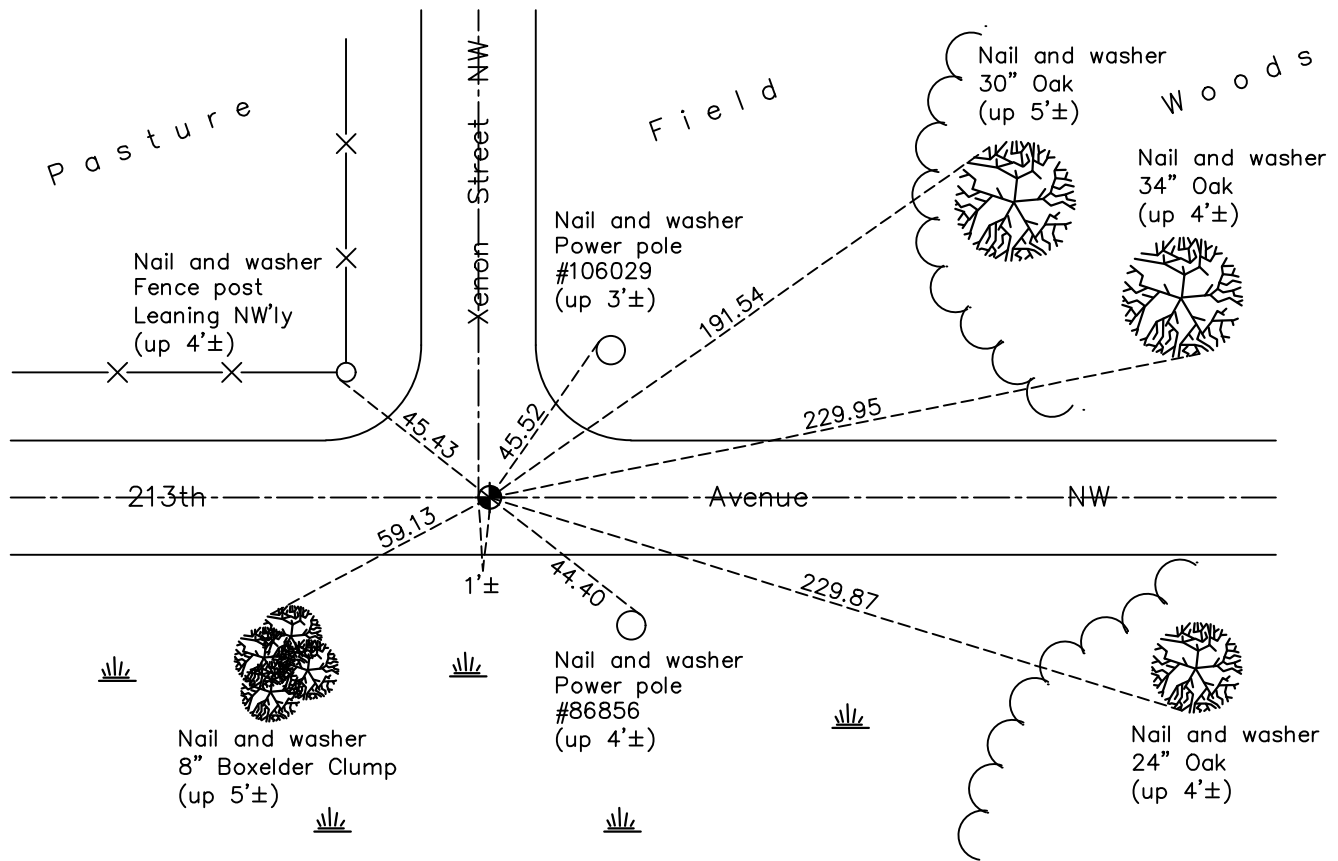
## Southeast Corner of Sec. 10 Township 33 Range 25

On the 1st day of December, 1972, the described corner was evidenced by a rock found during area resurvey

and to perpetuate the location of said corner, at the exact location thereof, a permanent marker was placed consisting of a cast iron monument 1'± east of center line

AND on the 22nd day of January, 2018, said permanent marker was found flush and the ties were updated

Updated reference ties are as shown below.



Revision Date

4/15/18

N.A.D. 1983 Coordinates  
(1996 Adjustment)

County Project Coordinates	
Northing	<u>217233.5759</u>
Easting	<u>458161.6955</u>
Date	<u>9/24/02</u>

I hereby certify that this United States public land survey monument record is correct and complete to the best of my knowledge and belief.

*David M. Ziegmeier* Date 6/9/21

David M. Ziegmeier, Anoka County Surveyor

Minnesota License Number 46179

# HISTORY OF GOVERNMENT CORNER

Page No. 43

County of Anoka

State of Minnesota

## Southeast Corner of Sec. 10 Township 33 Range 25

### **CORNER HISTORY:**

May 1855 - This corner was established by James M. Marsh, Deputy Surveyor. Marsh marked the position by "set post corner of sections 10, 11, 14 and 15" with one bearing tree marked as an accessory.

December 1, 1972- Found rock using area resurvey. Replaced rock with red and white iron pipe up 3.5'± in swamp. Established ties to monument.

July 24, 1973 - Found red and white iron pipe and updated ties.

September 17, 1973 - Set construction ties prior to road construction.

October 15, 1973 - Replaced red and white iron pipe with cast iron monument after road construction using construction ties.

July 20, 1976 - Found cast iron monument and updated ties.

July 9, 1979 - Found cast iron monument and updated ties.

August 2, 1982 - Found cast iron monument and updated ties.

September 1, 1988 - Found cast iron monument and updated ties.

June 30, 1994 - Found cast iron monument and updated ties.

August 20, 1997 - Found cast iron monument and set construction ties prior to construction.

October 2, 1997 - Set cast iron monument in blacktop road after construction. Updated ties.

September 24, 2002 - Established NAD 1983 (1996 adj.) Anoka County project coordinates by static GPS methods.

September 30, 2002 - Found cast iron monument and updated ties.

October 21, 2013 - Found cast iron monument 1'± east of center line. Verified position by VRS GPS methods. Updated ties.

January 22, 2018 - Found cast iron monument flush. Verified position by VRS GPS methods. Updated ties.